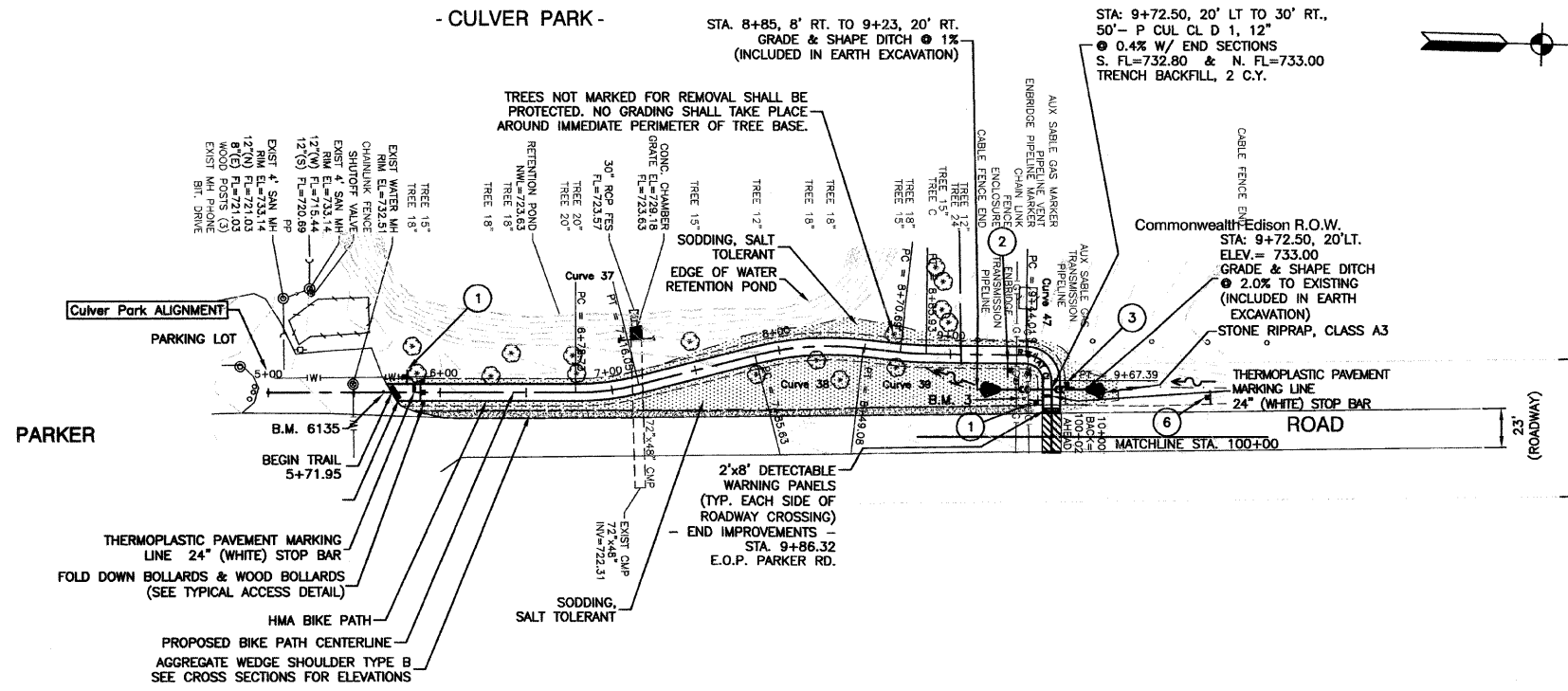
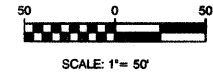


SECTION 1, TOWNSHIP 36, RANGE 11
 SECTION 2, TOWNSHIP 36, RANGE 11
 SECTION 11, TOWNSHIP 36, RANGE 11
 SECTION 12, TOWNSHIP 36, RANGE 11

F. A. U. SHEET	SECTION	COUNTY	TOTAL SHEETS	SHEET NO.
1600	06-00008-00-8T	WILL	73	12
STA. 5+71.95	TO STA. 9+86.32			
FED. ROAD DIST. NO. 1	ILLINOIS	FED. AID PROJECT	CMM-0001 (873)	

CONTRACT #63440

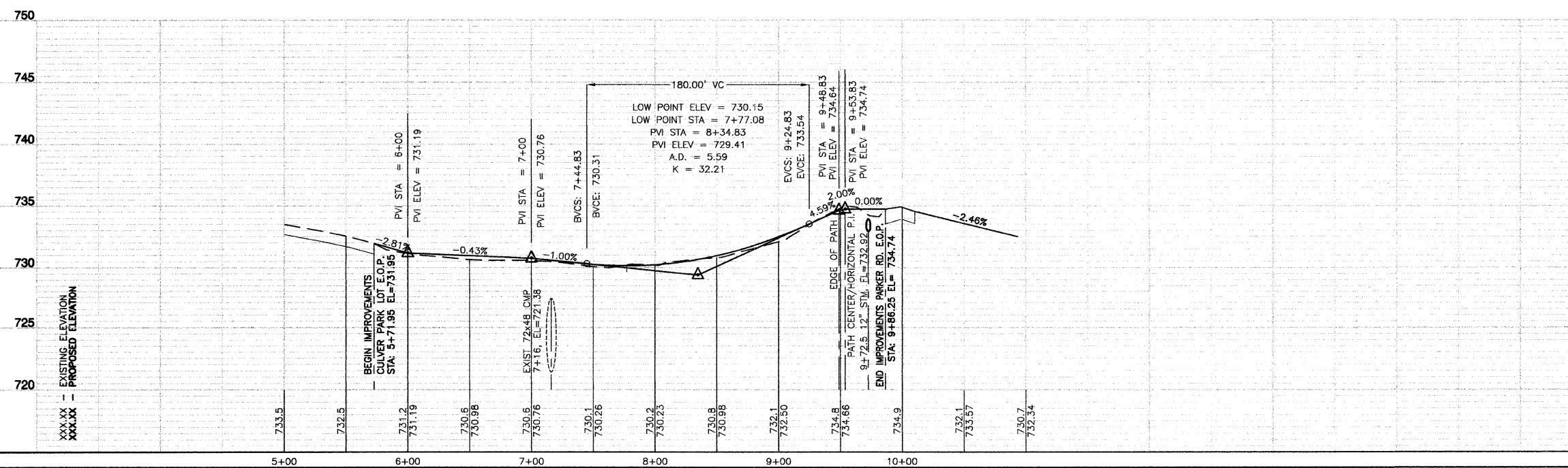


LEGEND:

	SODDING/LIMITS OF GRADING
	SEEDING/LIMITS OF GRADING

BENCH MARK: 3
 SPIKE SET ALONG PARKER ROAD, IN SHOULDER, 7.5' OFF WEST EDGE OF PAVEMENT, AND 450' SOUTH OF W. OAKWOOD DRIVE INTERSECTION. ELEVATION = 733.76

BENCH MARK: 6135
 PK NAIL SET IN PAVEMENT AT CULVER PARK PARKING LOT ENTRANCE, 18' NORTHEAST OF WATER MANHOLE, AND 13' WEST OF PARKER ROAD EDGE OF PAVEMENT. ELEVATION = 732.10



BIKE TRAIL SIGN LEGEND:

1	2	3	4	6
R1-1 18"x18"	W1-1R 18"x18"	W1-1L 18"x18"	M4-5 6"x4"	W11-1 24"x24"
	SLOW 12"x4"	SLOW 12"x4"		
			5	
			D11-1 24"x18"	

REVISIONS

NAME	DATE

ILLINOIS DEPARTMENT OF TRANSPORTATION

HOMER GLEN GMAO COMMUNITY BIKE TRAIL AND EAST EXTENSION PLAN & PROFILE SHEETS
 Culver Park at Parker Rd. STA 5+71.95 TO STA 9+86.32

SCALE: VERT. 1"=5'
 HORIZ. 1"=50'

DATE: FEBRUARY 2, 2010

DRAWN BY: JJB
 CHECKED BY: BDB