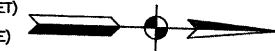


SECTION 1, TOWNSHIP 36, RANGE 11
 SECTION 2, TOWNSHIP 36, RANGE 11
 SECTION 11, TOWNSHIP 36, RANGE 11
 SECTION 12, TOWNSHIP 36, RANGE 11

F. A. U. NO.	SECTION	COUNTY	TOTAL SHEETS	SHEET NO.
1600	06-00008-00-BT	WILL	73	18
STA. 227+00	TO STA. 247+00			
FED. ROAD DIST. NO. 1	ILLINOIS	FED. AID PROJECT	CMM-0001 (673)	

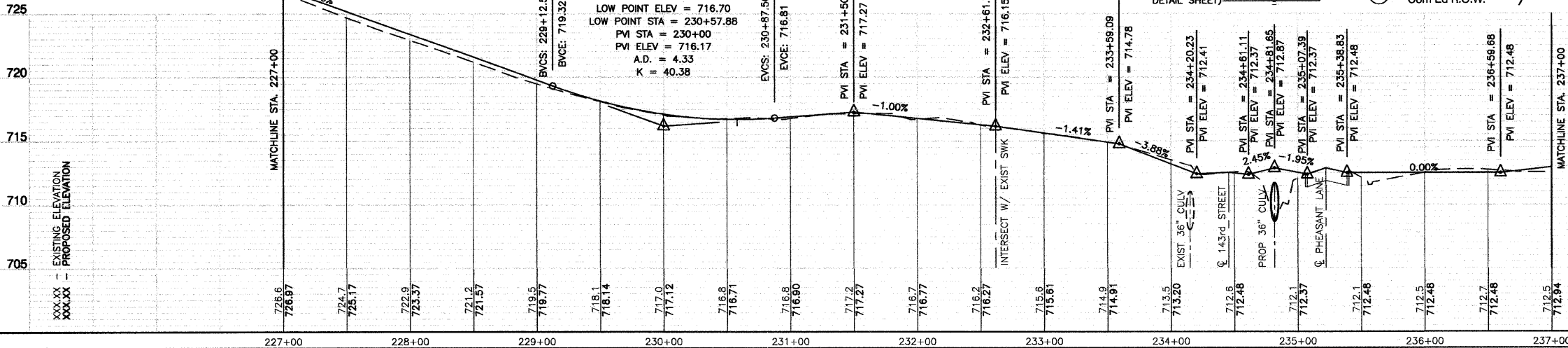
CONTRACT #63440



NOTE:
 SEE DRAINAGE DETAIL SHEET
 FOR CULVERT EXTENSION &
 ELEVATION INFORMATION

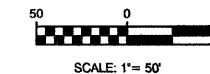
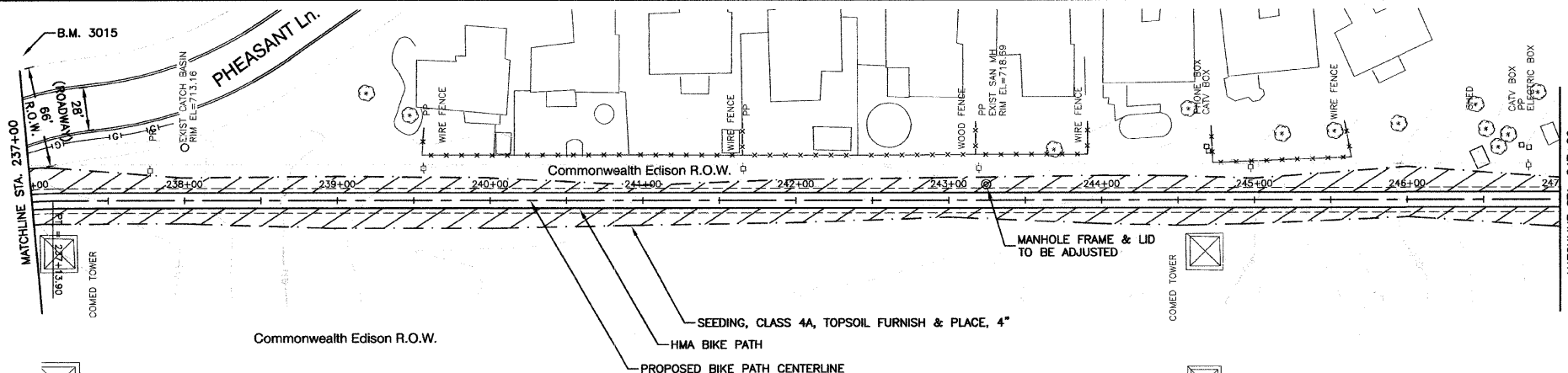
CURVE 35
 PI = STA. 229+59.54
 Δ = 07°02'42"
 D = 36°57'54"
 R = 155.00'
 T = 9.54'
 L = 19.06'
 E = 0.28'

CURVE 36
 PI = STA. 230+40.53
 Δ = 07°02'42"
 D = 36°57'54"
 R = 155.00'
 T = 9.54'
 L = 19.06'
 E = 0.29'



BIKE TRAIL SIGN LEGEND:

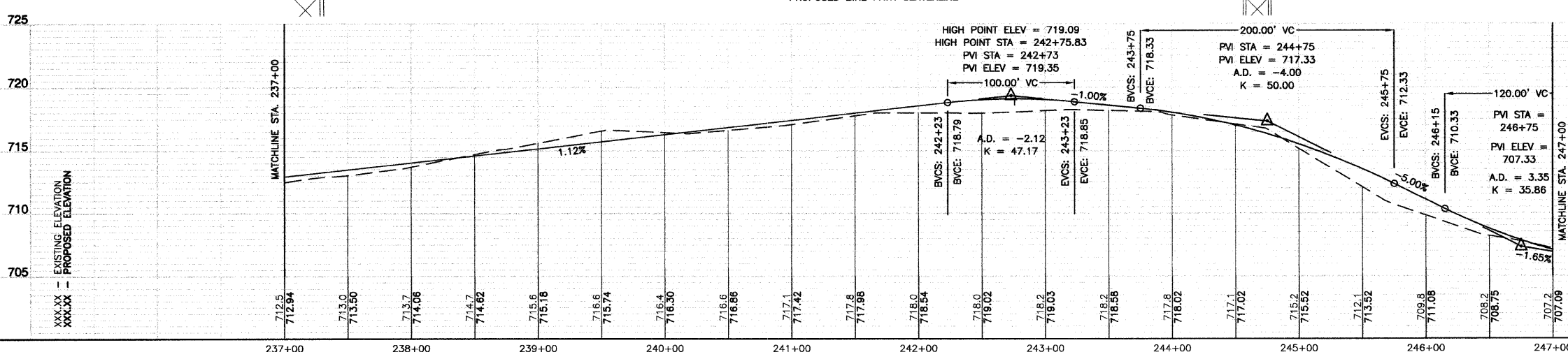
1 STOP R1-1 18"X18"	2 W1-1R 18"X18" SLOW 12"X4"	3 W1-1L 18"X18" SLOW 12"X4"	4 END M4-6 6"X4"	6 W11-1 24"X24"
			5 BIKE ROUTE D11-1 24"X18"	



LEGEND:

	SODDING/LIMITS OF GRADING
	SEEDING/LIMITS OF GRADING

BENCH MARK: 3015
 PK NAIL SET IN PAVEMENT ALONG PHEASANT LANE,
 5.5' FROM EAST EDGE OF PAVEMENT AND 157' NORTH
 OF 143RD STREET INTERSECTION.
 ELEVATION = 713.74



REVISIONS	
NAME	DATE

ILLINOIS DEPARTMENT OF TRANSPORTATION

**HOMER GLEN GMAQ COMMUNITY BIKE TRAIL
 AND EAST EXTENSION
 PLAN & PROFILE SHEETS
 Mustang Dr. to Venetian Way Sta 227+00 to Sta 247+00**

SCALE: VERT. 1"=5'
 HORIZ. 1"=50'

DATE: FEBRUARY 2, 2010

DRAWN BY: JJB
 CHECKED BY: BDB