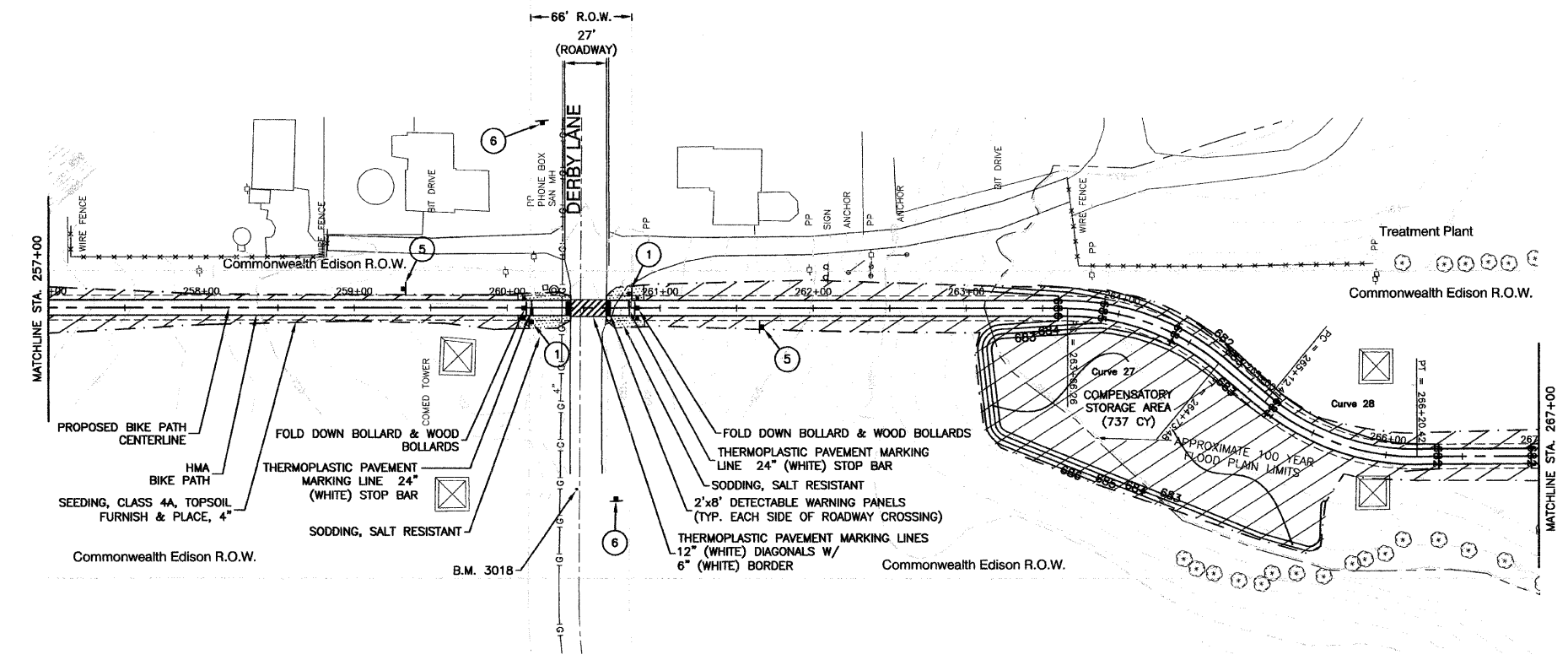
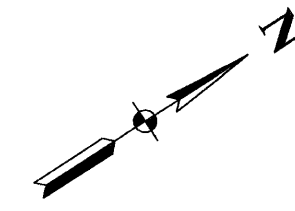
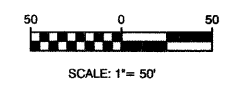


SECTION 1, TOWNSHIP 36, RANGE 11
 SECTION 2, TOWNSHIP 36, RANGE 11
 SECTION 11, TOWNSHIP 36, RANGE 11
 SECTION 12, TOWNSHIP 36, RANGE 11

F. A. U. REF.	SECTION	COUNTY	TOTAL SHEETS	SHEET NO.
1600	06-00008-00-BT	COOK	73	20
STA. 257+00		TO STA. 267+00		
FED. ROAD DIST. NO. 1	ALIGNS	FED. AID PROJECT	CMM-0001 (873)	

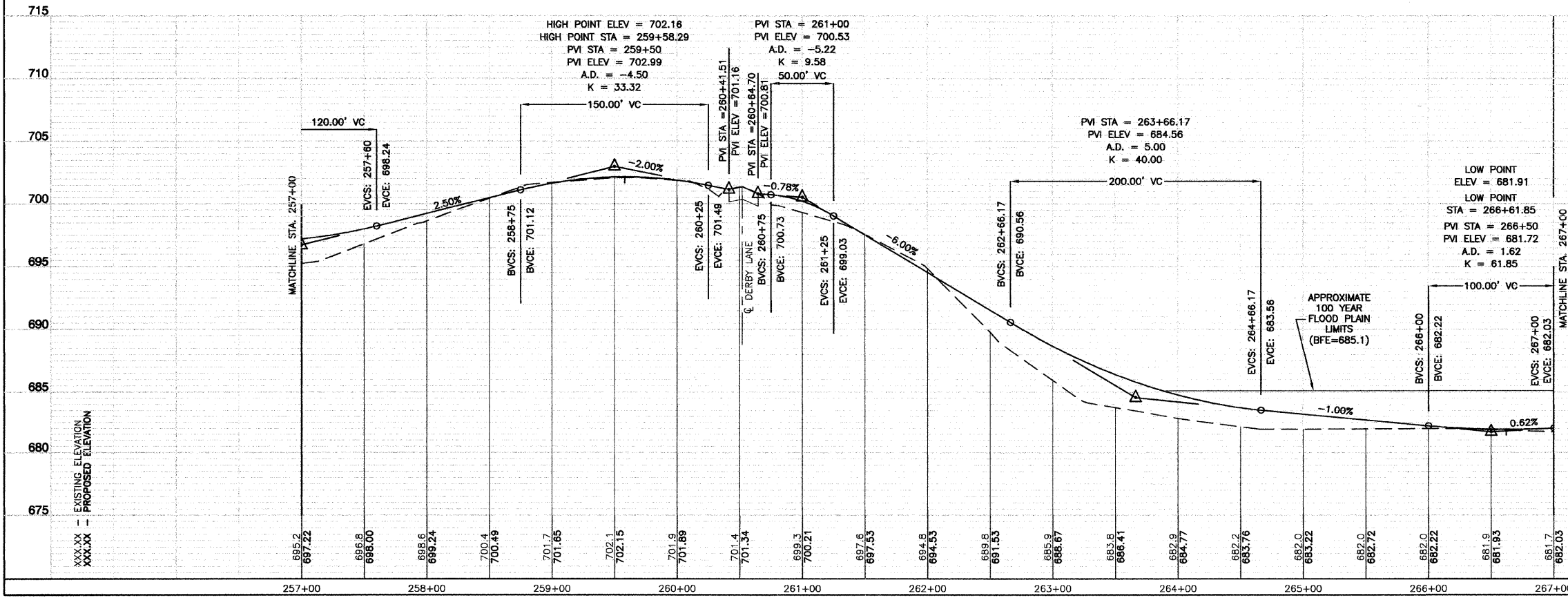
CONTRACT #63440



LEGEND:

	SODDING/LIMITS OF GRADING
	SEEDING/LIMITS OF GRADING

BENCH MARK: 3018
 PK NAIL SET ALONG IN PAVEMENT ALONG DERBY LANE, 4' OFF SOUTH EDGE OF PAVEMENT AND APPROXIMATELY 142' EAST OF WEST COM-ED R.O.W. LINE/ WOOD POWER POLE LINE, AND APPROXIMATELY 70' NORTH OF EASTERLY OF TWO COM-ED TOWERS. ELEVATION = 701.38



BIKE TRAIL SIGN LEGEND:

1	2	3	4	6
R1-1 18"x18"	W1-1R 18"x18"	W1-1L 18"x18"	M4-6 6"x4"	W11-1 24"x24"
			5	
	12"x4"	12"x4"		
			D11-1 24"x18"	

REVISIONS

NAME	DATE

ILLINOIS DEPARTMENT OF TRANSPORTATION

HOMER GLEN GMAQ COMMUNITY BIKE TRAIL AND EAST EXTENSION
PLAN & PROFILE SHEETS
 Mustang Dr. to Venetian Way Sta 257+00 to Sta 267+00

SCALE: VERT. 1"=5'
 HORIZ. 1"=50'

DATE: FEBRUARY 2, 2010

DRAWN BY: JJB
 CHECKED BY: BDB

ROBINSON ENGINEERING, LTD.
 1700 SOUTH PARK AVENUE SOUTH HOLLAND, ILLINOIS 60473
 (708) 331-6700 FAX (708) 331-3809
 ILLINOIS DESIGN FIRM REGISTRATION NO. 146001128 06221-PLPR-03-P2