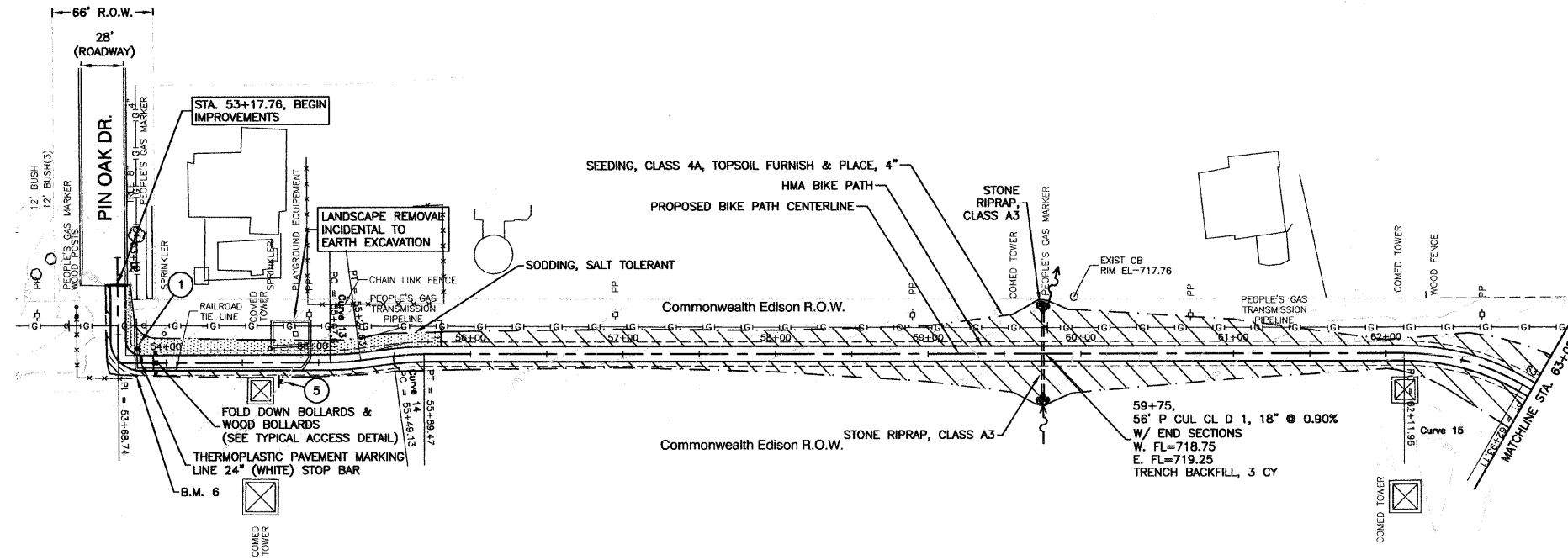
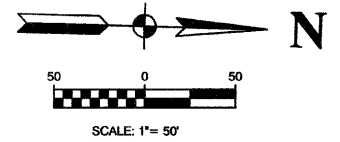


SECTION 1, TOWNSHIP 36, RANGE 11
 SECTION 2, TOWNSHIP 36, RANGE 11
 SECTION 11, TOWNSHIP 36, RANGE 11
 SECTION 12, TOWNSHIP 36, RANGE 11

F. A. L. YR.	SECTION	COUNTY	TOTAL SHEETS	SHEET NO.
1600	06-00008-00-BT	WILL	73	22
STA. 53+17.76		TO STA. 63+00		
FED. ROAD DIST. NO. 1	ILLINOIS	FED. AID PROJECT CMM-0001 (673)		

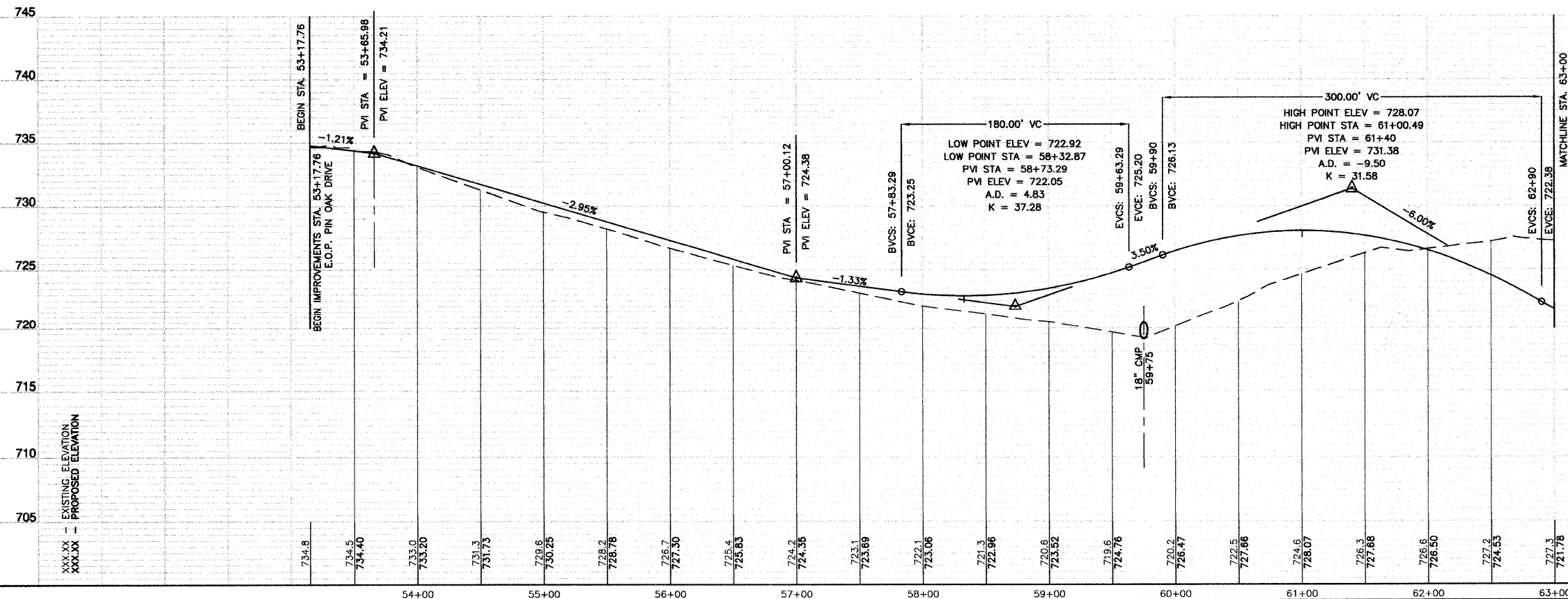
CONTRACT #63440



LEGEND:

	SODDING/LIMITS OF GRADING
	SEEDING/LIMITS OF GRADING

BENCH MARK: 6
 SPIKE SET ALONG PIN OAK DRIVE'S EASTERLY EXTENSION AT NORTH END OF CABLE DRIVE, APPROXIMATELY 223' EAST OF S. SPLIT RAIL DRIVE INTERSECTION. ELEVATION = 733.61



BIKE TRAIL SIGN LEGEND:

1 R1-1 18"X18"	2 W1-1R 18"X18"	3 W1-1L 18"X18"	4 M4-6 6"X4"	6 W11-1 24"X24"
	5 12"X4"			
				5 D11-1 24"X18"

REVISIONS	
NAME	DATE

ILLINOIS DEPARTMENT OF TRANSPORTATION

HOMER GLEN GMAQ COMMUNITY BIKE TRAIL AND EAST EXTENSION
PLAN & PROFILE SHEETS
 Pin Oak Dr. to Beaver Lake Dr. Sta 53+17.76 to Sta 63+00

SCALE: VERT. 1"=5'
 HORIZ. 1"=50'

DATE: FEBRUARY 2, 2010

DRAWN BY: JJB
 CHECKED BY: BDB

ROBINSON ENGINEERING, L.T.D.
 1700 SOUTH PARK AVENUE, SOUTH HOLLAND, ILLINOIS 60473
 (708) 351-6700 FAX (708) 351-3626
 ILLINOIS DESIGN FIRM REGISTRATION NO. 154601128 06231-PLPR-02-P2