

SECTION 1, TOWNSHIP 36, RANGE 11  
 SECTION 2, TOWNSHIP 36, RANGE 11  
 SECTION 11, TOWNSHIP 36, RANGE 11  
 SECTION 12, TOWNSHIP 36, RANGE 11

**CURVE 43**  
 PI= STA. SEE PLAN  
 Δ = 16°39'06"  
 D = 36°57'54"  
 R = 155.00'  
 T = 22.68'  
 L = 45.05'  
 E = 1.65'

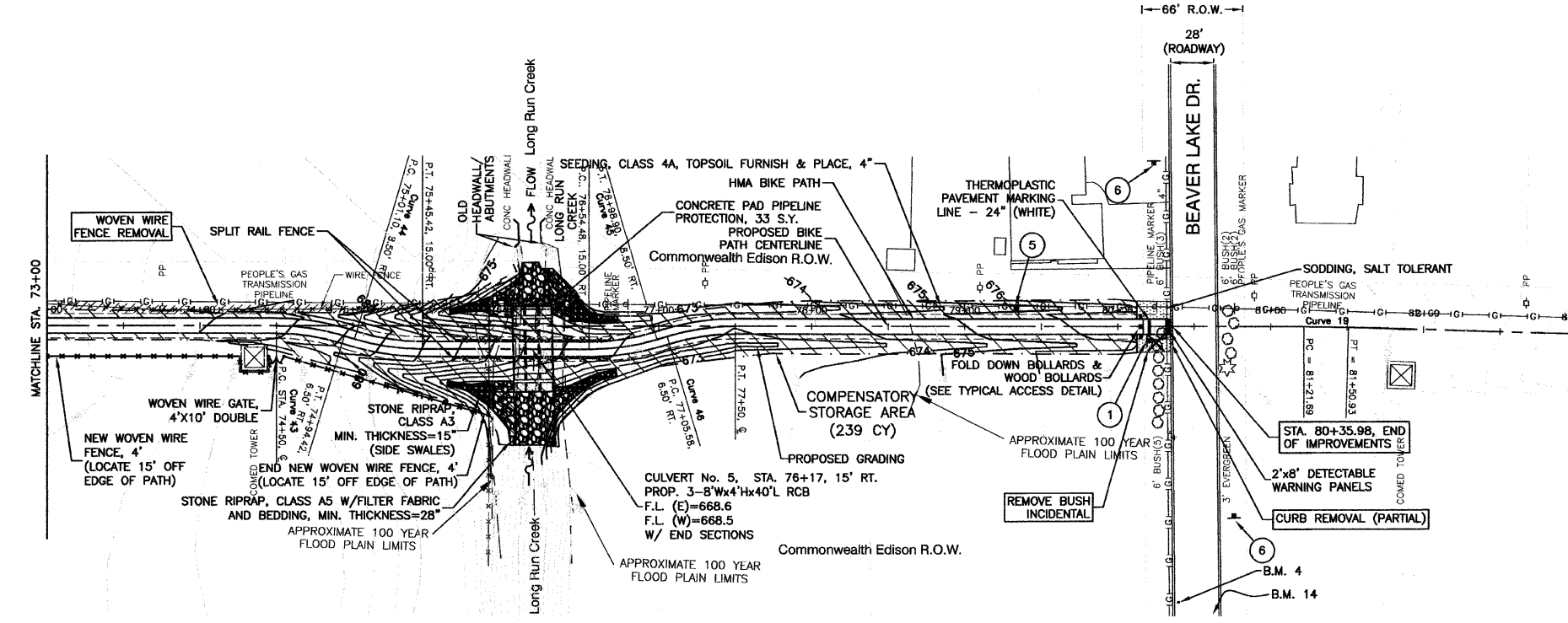
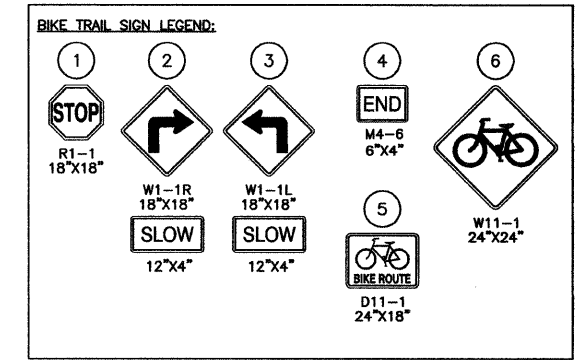
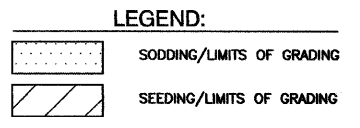
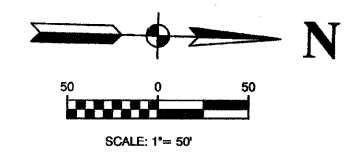
**CURVE 44**  
 PI= STA. SEE PLANS  
 Δ = 16°39'06"  
 D = 36°57'54"  
 R = 155.00'  
 T = 22.68'  
 L = 45.05'  
 E = 1.65'

**CURVE 45**  
 PI= STA. SEE PLANS  
 Δ = 16°39'06"  
 D = 36°57'54"  
 R = 155.00'  
 T = 22.68'  
 L = 45.05'  
 E = 1.65'

**CURVE 46**  
 PI= STA. SEE PLANS  
 Δ = 16°39'06"  
 D = 36°57'54"  
 R = 155.00'  
 T = 22.68'  
 L = 45.05'  
 E = 1.65'

F. A. U. R.E.	SECTION	COUNTY	TOTAL SHEETS	SHEET NO.
1600	08-00008-00-BT	WILL	73	24
STA. 73+00		TO STA. 80+34.60		
FED. ROAD DIST. NO. 1	ALLIANCE	FED. AID PROJECT	CMM-0001 (673)	

CONTRACT #63440

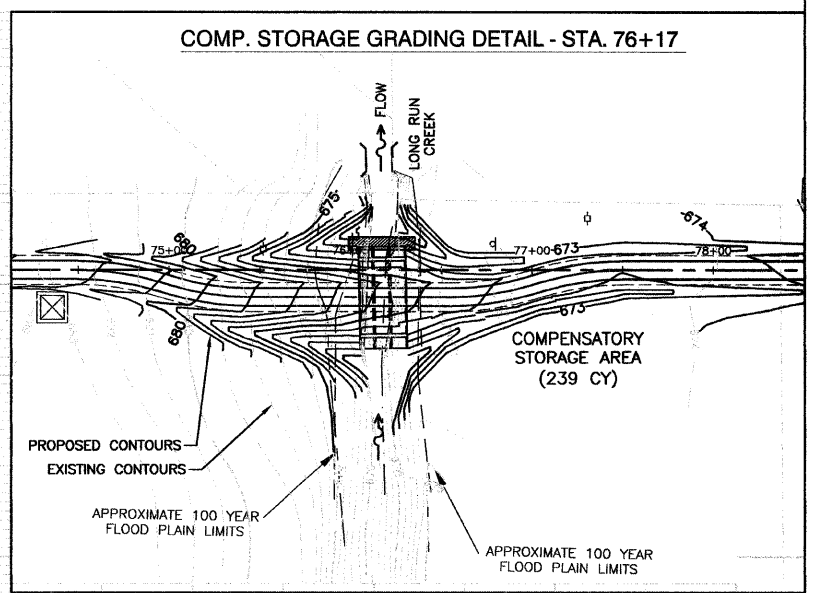
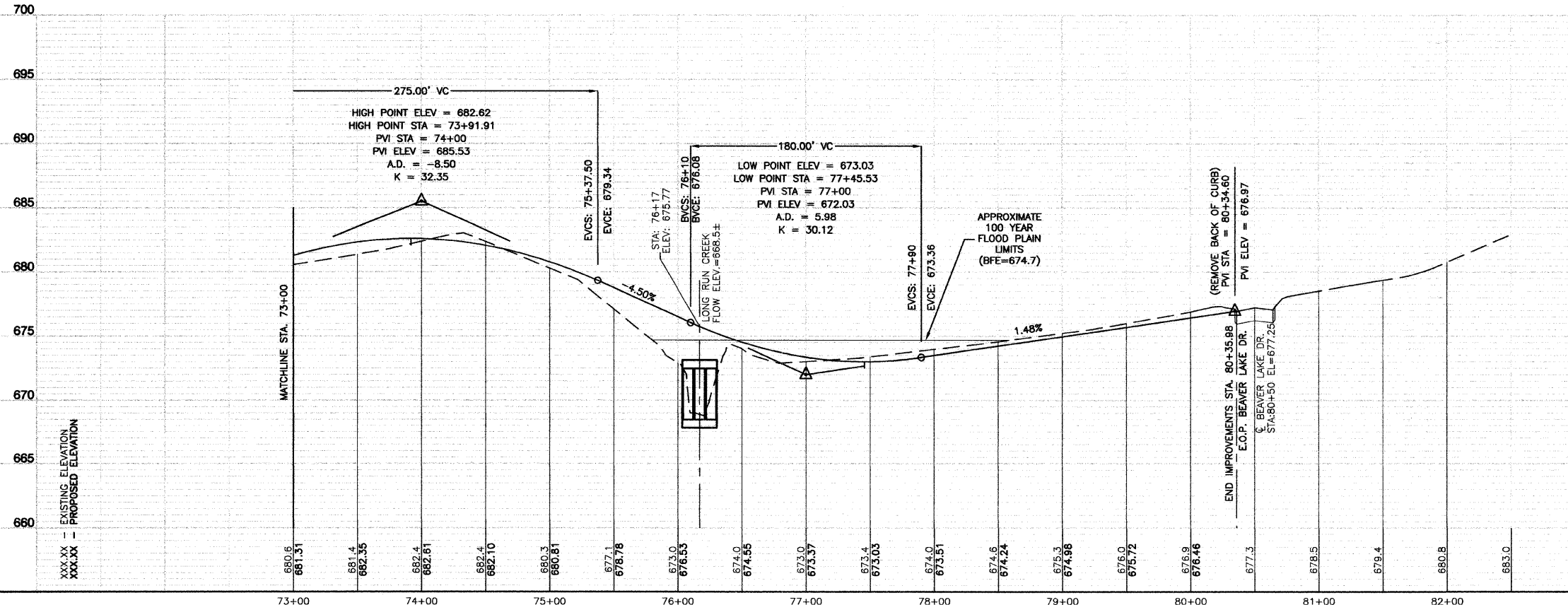


**BENCH MARK: 4**

PK NAIL ALONG BEAVER LAKE DRIVE, IN PAVEMENT, APPROXIMATELY 385' EAST OF LOST BOY LANE INTERSECTION, 2' OFF OF SOUTH EDGE OF PAVEMENT. ELEVATION = 677.80

**BENCH MARK: 14**

PK NAIL ALONG BEAVER LAKE DRIVE, IN PAVEMENT, APPROXIMATELY 1370' EAST OF LOST BOY LANE INTERSECTION. ELEVATION = 678.54



**REVISIONS**

NAME	DATE

ILLINOIS DEPARTMENT OF TRANSPORTATION

**HOMER GLEN GMAQ COMMUNITY BIKE TRAIL AND EAST EXTENSION**  
**PLAN & PROFILE SHEETS**  
 Pin Oak Dr. to Beaver Lake Dr.; 73+00 to STA 80+34.60

SCALE: VERT. 1"=5'  
 HORIZ. 1"=50'

DATE: FEBRUARY 2, 2010

DRAWN BY: JJB  
 CHECKED BY: BDB