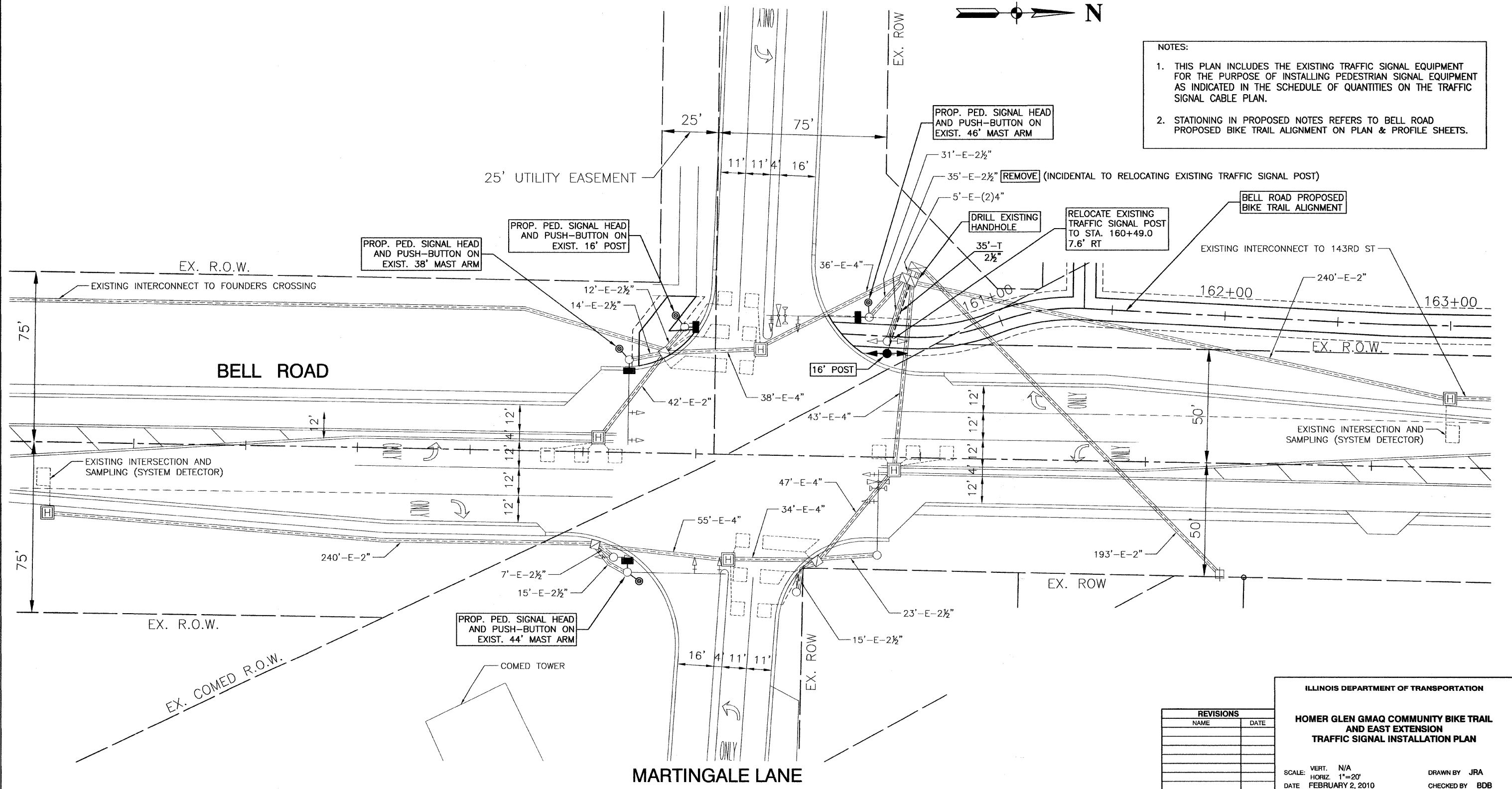


F. A. U. RTE.	SECTION	COUNTY	TOTAL SHEETS	SHEET NO.
1600	06-00008-00-BT	WILL	73	32
STA.	TO STA.			
FED. ROAD DIST. NO. 1	ILLINOIS	FED. AID PROJECT	CMM-0001 (673)	

CONTRACT #63440



NOTES:

1. THIS PLAN INCLUDES THE EXISTING TRAFFIC SIGNAL EQUIPMENT FOR THE PURPOSE OF INSTALLING PEDESTRIAN SIGNAL EQUIPMENT AS INDICATED IN THE SCHEDULE OF QUANTITIES ON THE TRAFFIC SIGNAL CABLE PLAN.
2. STATIONING IN PROPOSED NOTES REFERS TO BELL ROAD PROPOSED BIKE TRAIL ALIGNMENT ON PLAN & PROFILE SHEETS.

REVISIONS	
NAME	DATE

ILLINOIS DEPARTMENT OF TRANSPORTATION
HOMER GLEN GMAQ COMMUNITY BIKE TRAIL AND EAST EXTENSION TRAFFIC SIGNAL INSTALLATION PLAN

SCALE: VERT. N/A
 HORIZ. 1"=20'
 DATE: FEBRUARY 2, 2010
 DRAWN BY: JRA
 CHECKED BY: BDB