

F.A.U. RTE.	SECTION	COUNTY	TOTAL SHEETS	SHEET NO.
341	04-00090-07 BR	WILL	57	1
		ILLINOIS	CONTRACT NO. 63442	

**D-91-548-08**

**INDEX OF SHEETS**

- 1 COVER SHEET
- 2 GENERAL NOTES
- 3 SUMMARY OF QUANTITIES
- 4 SCHEDULE OF QUANTITIES
- 5 ROADWAY PLAN
- 6 DETOUR PLAN
- 7 EROSION CONTROL PLAN
- 8 PAVEMENT MARKING PLAN
- 9-55 BRIDGE PLANS
- 56 DISTRICT 1 HIGHWAY STANDARD TC-11 REVISED 9/9/09
- 57 DISTRICT 1 HIGHWAY STANDARD TC-13 REVISED 9/9/09

**PROJECT LOCATED IN THE UNINCORPORATED TOWNSHIP OF JOLIET**

**HIGHWAY STANDARDS**

- 000001-05 STANDARD SYMBOLS, ABBREVIATIONS AND PATTERNS
- 280001-05 TEMPORARY EROSION CONTROL SYSTEM
- 420401-08 BRIDGE APPROACH PAVEMENT CONNECTOR
- 515001-03 NAME PLATE FOR BRIDGES
- 630001-08 STEEL PLATE BEAM GUARDRAIL
- 630301-05 SHOULDER WIDENING FOR TYPE 1 (SPECIAL) GUARDRAIL TERMINALS
- 631031-08 TRAFFIC BARRIER TERMINAL TYPE B
- 635001-01 DELINEATORS
- 635006-03 REFLECTOR AND TERMINAL MARKER PLACEMENT
- 635011-02 REFLECTOR MARKER AND MOUNTING DETAILS
- 701901-01 TRAFFIC CONTROL DEVICES
- 720001-01 SIGN PANEL MOUNTING DETAILS
- 720006-02 SIGN PANEL ERECTION DETAILS
- 720011-01 METAL POSTS FOR SIGNS, MARKERS & DELINEATORS
- 780001-02 TYPICAL PAVEMENT MARKINGS
- BLR 21-8 TYPICAL APPLICATION OF TRAFFIC CONTROL DEVICES FOR CONSTRUCTION ON RURAL LOCAL HIGHWAYS

**DISTRICT 1 HIGHWAY STANDARDS**

- TC-11 RAISED REFLECTIVE PAVEMENT MARKERS (SNOW PLOW RESISTANT)
- TC-13 DISTRICT ONE PAVEMENT MARKINGS

**DESIGN DESIGNATION**

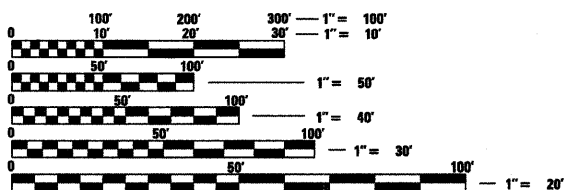
FUNCTIONAL CLASSIFICATION: COLLECTOR

**TRAFFIC DATA**

2030 ADT = 12,000 VEHICLES

**DESIGN SPEED LIMIT 45 MPH**

**POSTED SPEED LIMIT 35 MPH**



FULL SIZE PLANS HAVE BEEN PREPARED USING STANDARD ENGINEERING SCALES. REDUCED SIZED PLANS WILL NOT CONFORM TO STANDARD SCALES. IN MAKING MEASUREMENTS ON REDUCED PLANS, THE ABOVE SCALES MAY BE USED.

J.U.L.I.E.  
JOINT UTILITY LOCATION INFORMATION FOR EXCAVATION  
1-800-892-0123  
OR 811

**PROJECT ENGINEER  
PROJECT MANAGER**

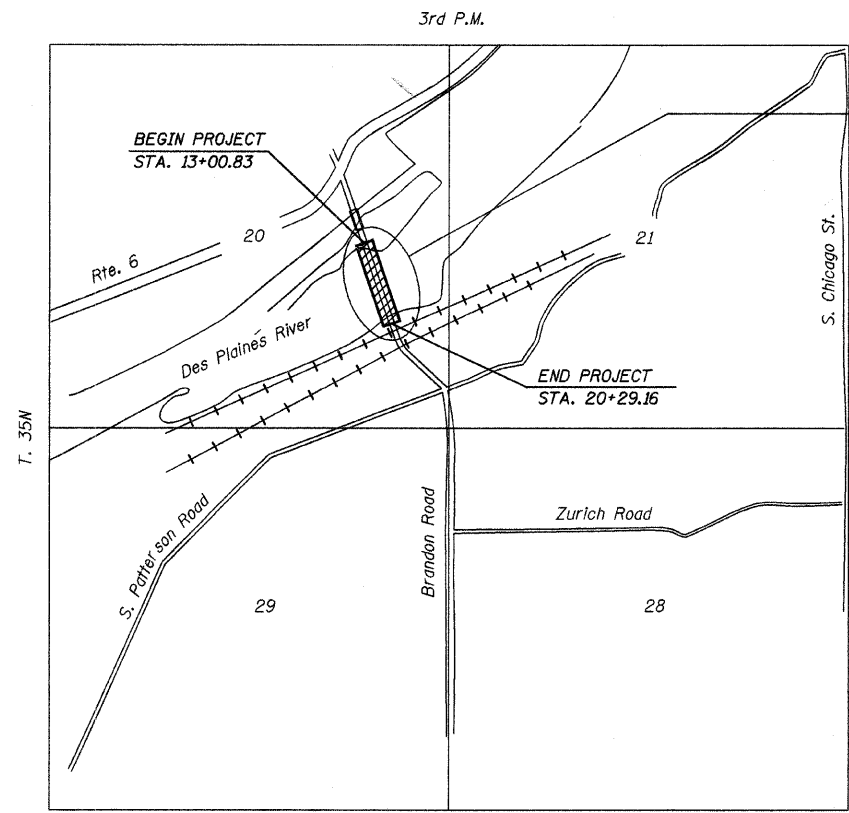
**CONTRACT NO. 63442**

**STATE OF ILLINOIS  
DEPARTMENT OF TRANSPORTATION  
DIVISION OF HIGHWAYS**

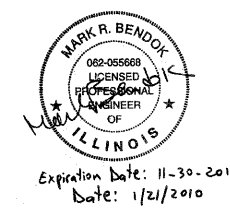
**PROPOSED  
HIGHWAY PLANS**

**F.A.U. ROUTE 341 (BRANDON ROAD)  
COUNTY HIGHWAY 42  
SECTION 04-00090-07-BR  
PROJECT BRS-0197(110)  
BRIDGE REHABILITATION  
WILL COUNTY**

**C-91-548-08**



**PROPOSED REHABILITATION  
SN 099-3298**



LOCATION OF SECTION INDICATED THUS: - [shaded box] -

STATE OF ILLINOIS  
DEPARTMENT OF TRANSPORTATION  
DIVISION OF HIGHWAYS

APPROVED JANUARY 25<sup>TH</sup> 20 10  
*[Signature]*  
WILL COUNTY COUNTY ENGINEER

PASSED JANUARY 29, 2010 20  
*[Signature]*  
DISTRICT 1 ENGINEER OF LOCAL ROADS AND STREETS

RELEASING BID  
BASED ON LIMITED  
REVIEW FEBRUARY 3, 20 10  
*[Signature]*  
DEPUTY DIRECTOR OF HIGHWAYS, REGION 1 ENGINEER

**PRINTED BY THE AUTHORITY  
OF THE STATE OF ILLINOIS**

FIELD ENGINEER: MELCHOR MANGOBA (847) 705-4408

**LOCATION MAP  
SCALE: NOT TO SCALE**

GROSS LENGTH = 728.33 FT. = 0.138 MILE  
NET LENGTH = 728.33 FT. = 0.138 MILE

**benesch**  
alfred benesch & company  
Engineers • Surveyors • Planners  
205 North Michigan Avenue, Suite 2400  
Chicago, Illinois 60601  
312-665-0450 Job No. 3808.02