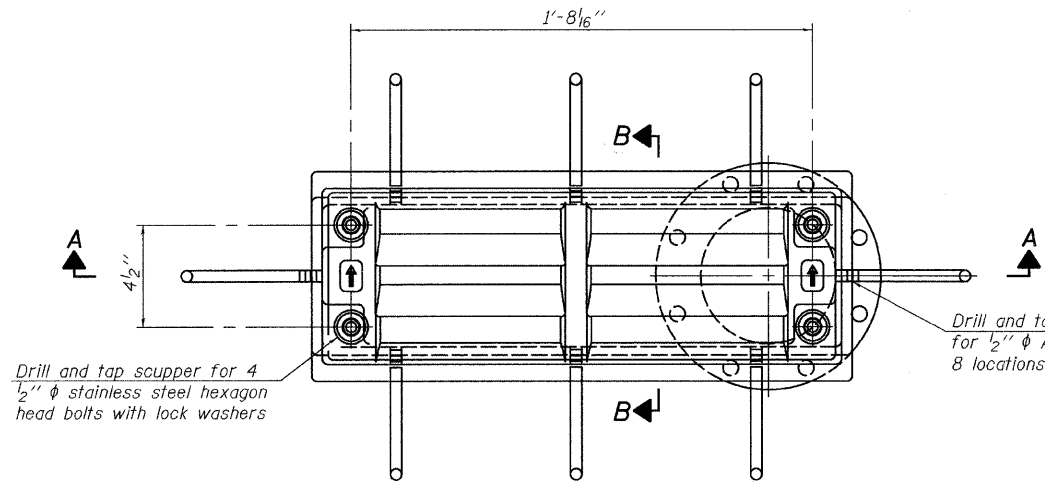
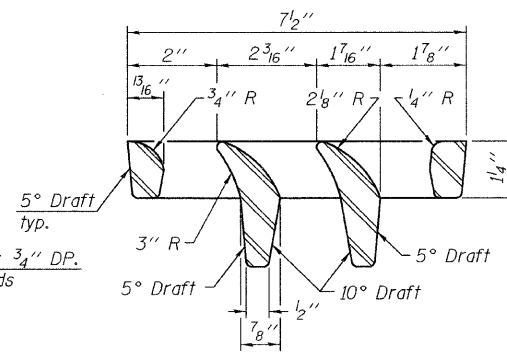


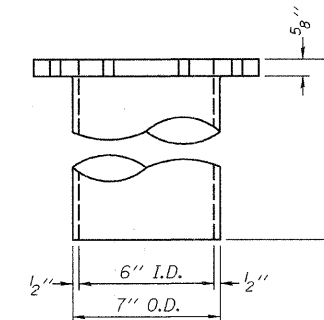
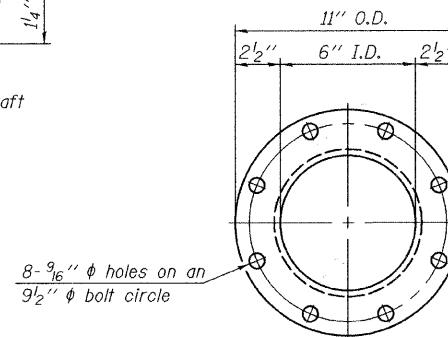
STATE OF ILLINOIS
DEPARTMENT OF TRANSPORTATION



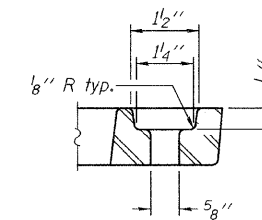
PLAN



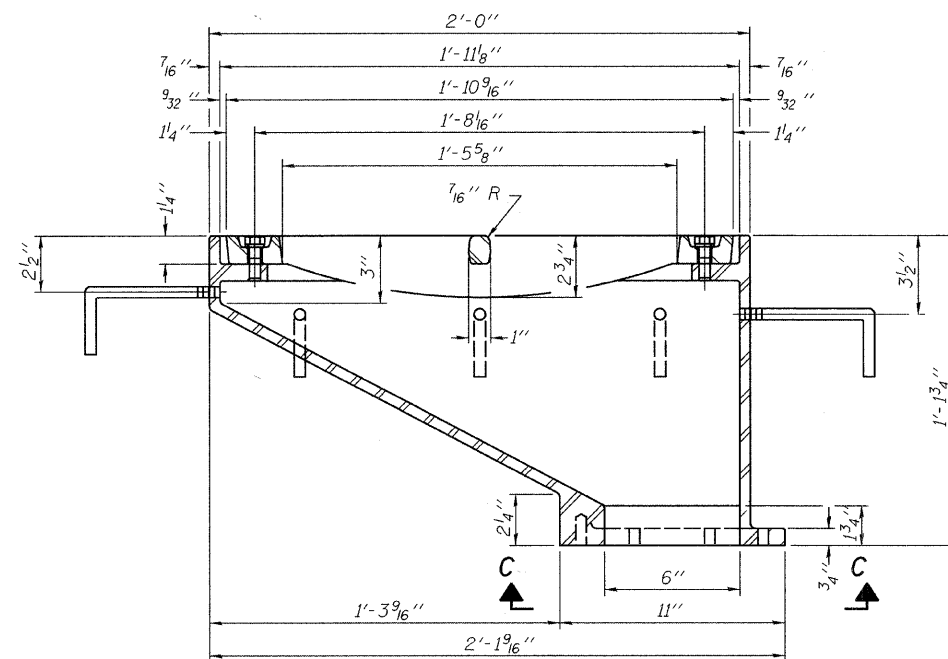
VANE GRATE DETAIL



DOWNSPOUT

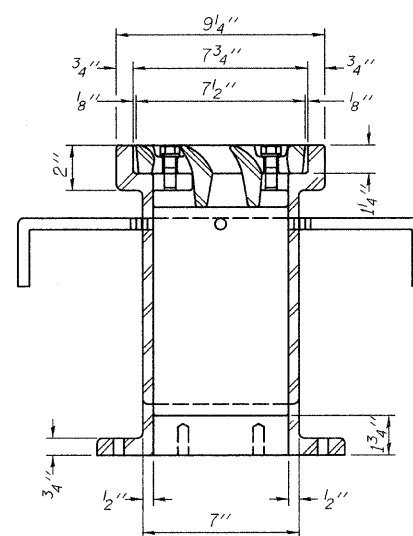


BOLT HOLE DETAIL



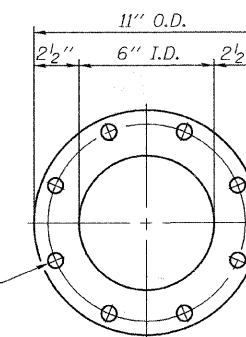
SECTION A-A

(See sheet S17 for scupper location relative to parapet)

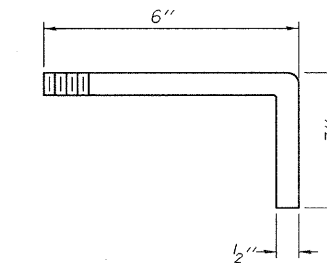


SECTION B-B

Drill and tap 8 holes for 1/2"-13 bolts on a 9 1/2" φ bolt circle. (2 blind holes are 1 1/4" deep, 6 thru holes)



VIEW C-C



ANCHOR STUD DETAIL

BILL OF MATERIAL

ITEM	UNIT	QUANTITY
Drainage Scupper, DS-12	Each	8

DRAINAGE SCUPPER, DS-12
STRUCTURE NO. 099-3298

DESIGNED -	MRB
CHECKED -	KWS
DRAWN -	VH
CHECKED -	MRB

DS-12

11-1-09

benesch

alfred benesch & company
Engineers - Surveyors - Planners
205 North Michigan Avenue, Suite 2400
Chicago, Illinois 60601
312-565-0460 Job No. 3908.02

SHEET NO. S22	F.A.U. RTE.	SECTION	COUNTY	TOTAL SHEETS	SHEET NO.
S47 SHEETS	341	04-00090-07-BR	WILL	57	30
			CONTRACT NO. 63442		
FED. ROAD DIST. NO.		ILLINOIS		FED. AID PROJECT	