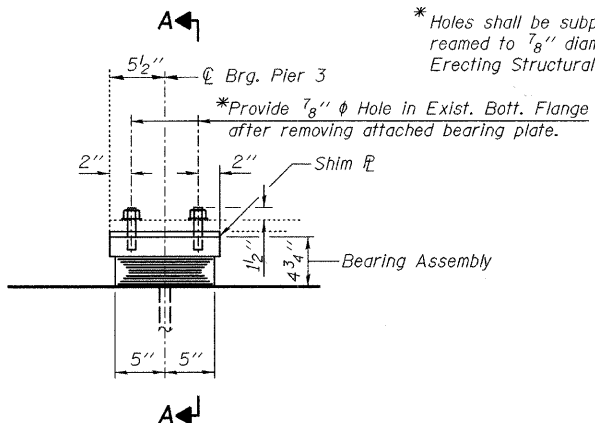


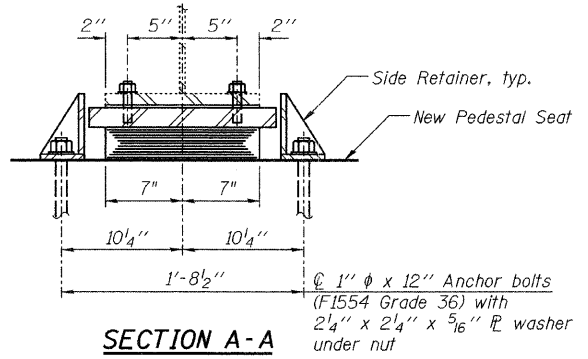
STATE OF ILLINOIS
DEPARTMENT OF TRANSPORTATION

*Holes shall be subpunched or subdrilled $\frac{3}{4}$ " diameter and reamed to $\frac{7}{8}$ " diameter. Cost included with Furnishing and Erecting Structural Steel.

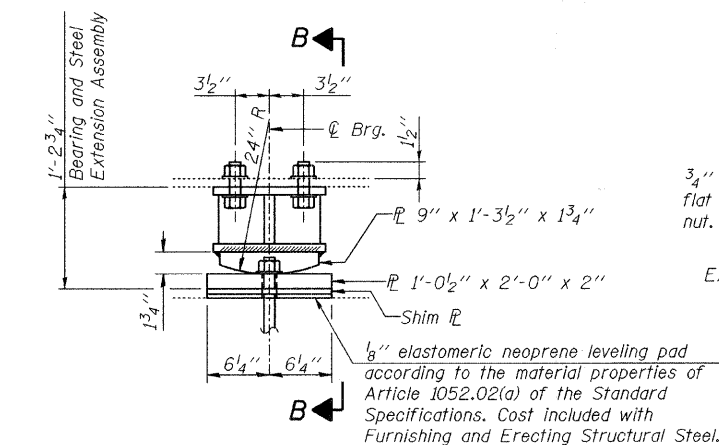


ELEVATION AT PIER 3

TYPE I ELASTOMERIC EXP. BRG.

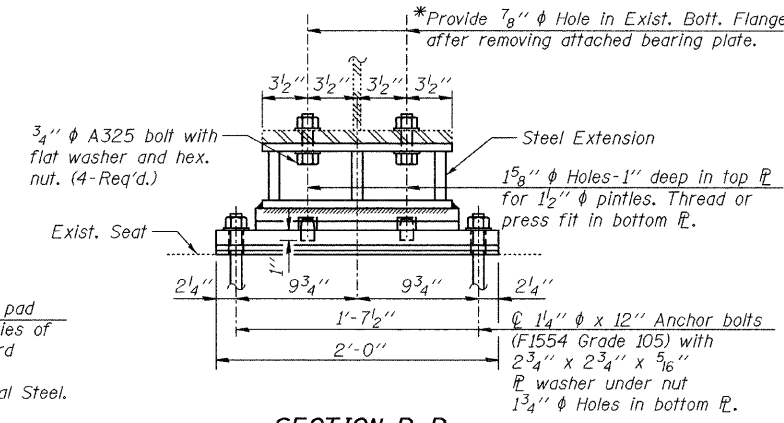


SECTION A-A

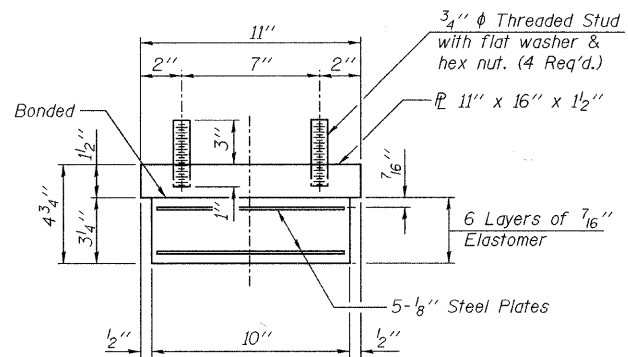


ELEVATION AT PIER

FIXED BEARING
(Piers 2 & 4)

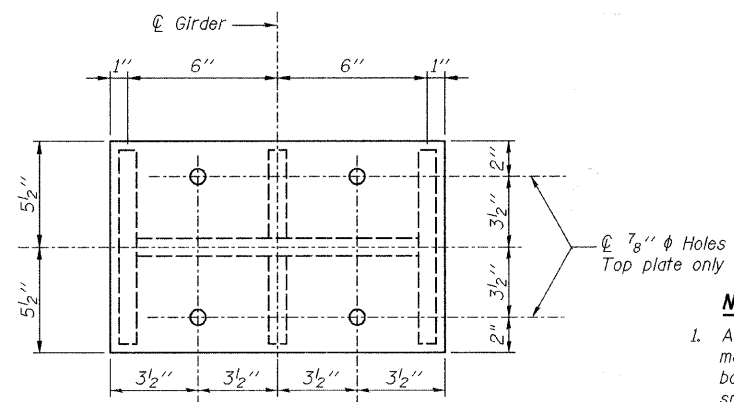


SECTION B-B

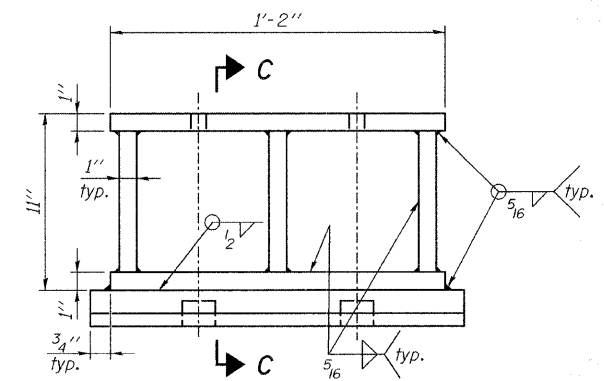


BEARING ASSEMBLY

(Shim plates shall not be placed under Bearing Assembly.)

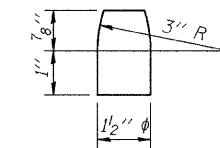


PLAN STEEL EXTENSION



ELEVATION STEEL EXTENSION

(Weight included with Furnishing and Erecting Structural Steel.)



PINTLE

NOTES:

- Anchor bolts shall be ASTM F1554 all-thread (or an Engineer-approved alternate material) of the grade(s) and diameter(s) specified. ASTM A307 Grade C anchor bolts may be used in lieu of ASTM F1554 Grade 36 (Fy=36ksi). The corresponding specified grade of AASHTO M314 anchor bolts may be used in lieu of ASTM F1554.
- Anchor bolts at fixed bearings shall be installed in holes drilled into the existing pier.
- Anchor bolts for side retainers may be cast in place or installed in holes drilled before or after members are in place.
- Drilled and set anchor bolts shall be installed according to Article 521.06 of the Standard Specifications.
- Side retainers and other steel members required for the bearing assembly shall be included in the cost of Elastomeric Bearing Assembly, Type I.
- The structural steel plates of the Bearing Assembly and Steel Extension shall conform to the requirements of AASHTO M 270 Grade 50.
- Two 1/8 in. adjusting shims shall be provided for each bearing in addition to all other plates or shims as shown on bearing details.
- The anchor bolt size and grades shown constitute a calculated seismic structural fuse. Substitution of higher diameter and/or grade anchor bolts will not be allowed.
- Prior to ordering any material, the Contractor shall verify in the field all bearing height and shim thickness dimensions.

BILL OF MATERIAL

Item	Unit	Total
Elastomeric Bearing Assembly, Type I	Each	10
Anchor Bolts, 1"	Each	20
Anchor Bolts, 1 1/4"	Each	20

BEARING DETAILS 1 OF 2
STRUCTURE NO. 099-3298

DESIGNED -	JLS
CHECKED -	KWS
DRAWN -	VH/MB
CHECKED -	MRB

benesch

alfred benesch & company
Engineers - Surveyors - Planners
205 North Michigan Avenue, Suite 2400
Chicago, Illinois 60601
312-595-0450 Job No. 3808.02

SHEET NO. S25	F.A.U. RTE.	SECTION	COUNTY	TOTAL SHEETS	SHEET NO.
	341	04-00090-07-BR	WILL	57	33
S47 SHEETS	CONTRACT NO. 63442				
FED. ROAD DIST. NO.		ILLINOIS	FED. AID PROJECT		

x:\380802\engineer\ng_documents\phase-11\brandon_road_bridg\final\0993298-63442-025-brgi.dgn 10:04:09 AM 1/22/2010