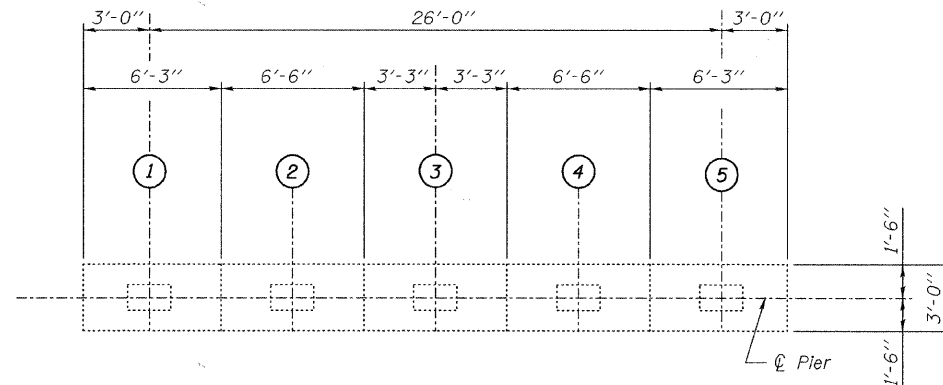


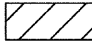
STATE OF ILLINOIS
DEPARTMENT OF TRANSPORTATION

BILL OF MATERIAL

ITEM	UNIT	TOTAL
Epoxy Crack Injection	Foot	40
Structural Repair of Concrete (Depth Greater Than 5 Inches)	Sq. Ft.	10
Structural Repair of Concrete (Depth Equal to or Less Than 5 Inches)	Sq. Ft.	10

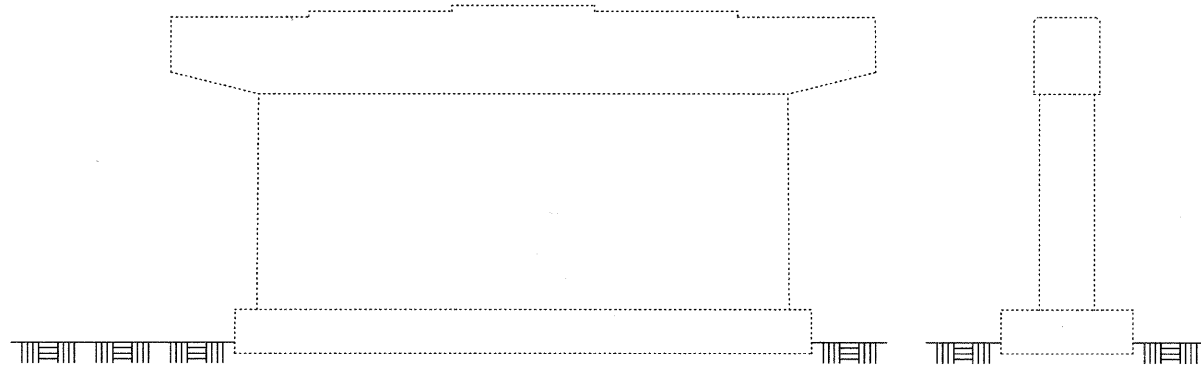


TOP PLAN

~~~~~ indicates Epoxy Crack Injection  
 indicates Structural Repair of Concrete (Depth Equal to or Less Than 5 Inches)

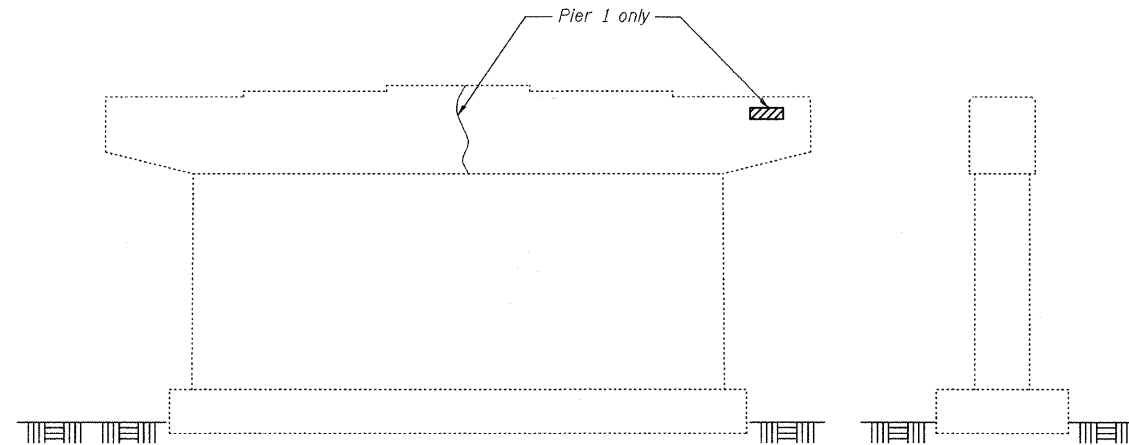
**NOTES:**

- The quantities shown are provided as a contingency for estimating purposes only. The area to be repaired shall be determined by the Engineer at the time of construction. Actual repair locations shall be shown on the as-built plans.
- Crack widths are  $\frac{1}{8}'' \pm \frac{1}{16}''$  unless otherwise noted.



**ELEVATION**  
(Looking South)

**END VIEW**  
(Looking East)



**ELEVATION**  
(Looking North)

**END VIEW**  
(Looking West)

|            |     |
|------------|-----|
| DESIGNED - | JLS |
| CHECKED -  | MRB |
| DRAWN -    | VH  |
| CHECKED -  | MRB |

**benesch**

alfred benesch & company  
Engineers • Surveyors • Planners  
205 North Michigan Avenue, Suite 2400  
Chicago, Illinois 60601  
312-565-0450 Job No. 3808.02

|                             |             |                |          |                  |           |
|-----------------------------|-------------|----------------|----------|------------------|-----------|
| SHEET NO. S30<br>S47 SHEETS | F.A.U. RTE. | SECTION        | COUNTY   | TOTAL SHEETS     | SHEET NO. |
|                             | 341         | 04-00090-07-BR | WILL     | 57               | 38        |
| FED. ROAD DIST. NO.         |             |                | ILLINOIS | FED. AID PROJECT |           |
| CONTRACT NO. 63442          |             |                |          |                  |           |

**PIER 1 AND 2 REPAIRS**  
**STRUCTURE NO. 099-3298**