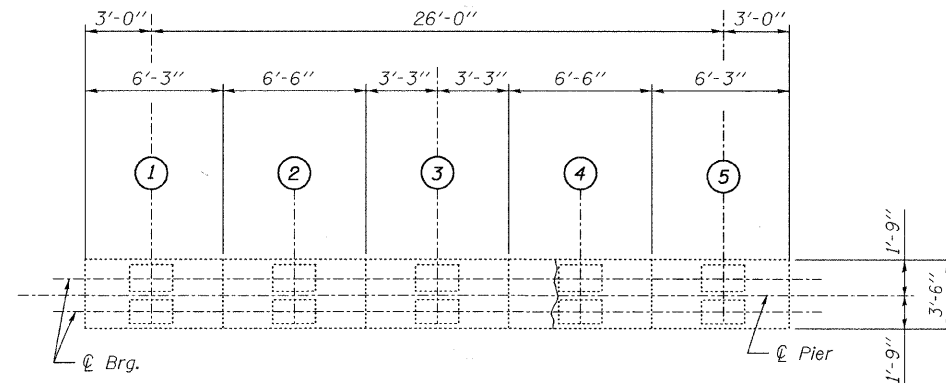


STATE OF ILLINOIS
DEPARTMENT OF TRANSPORTATION

BILL OF MATERIAL

ITEM	UNIT	TOTAL
Epoxy Crack Injection	Foot	78
Structural Repair of Concrete (Depth Greater Than 5 Inches)	Sq. Ft.	5
Structural Repair of Concrete (Depth Equal to or Less Than 5 Inches)	Sq. Ft.	5

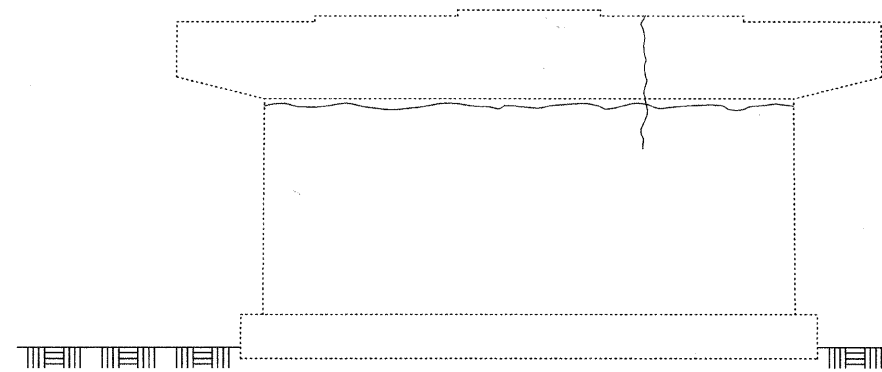


TOP PLAN

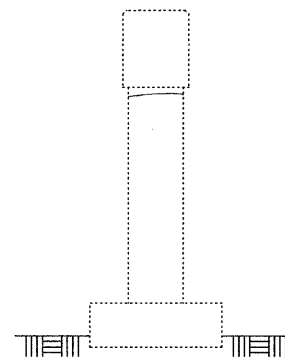
~~~~~ indicates Epoxy Crack Injection

**NOTES:**

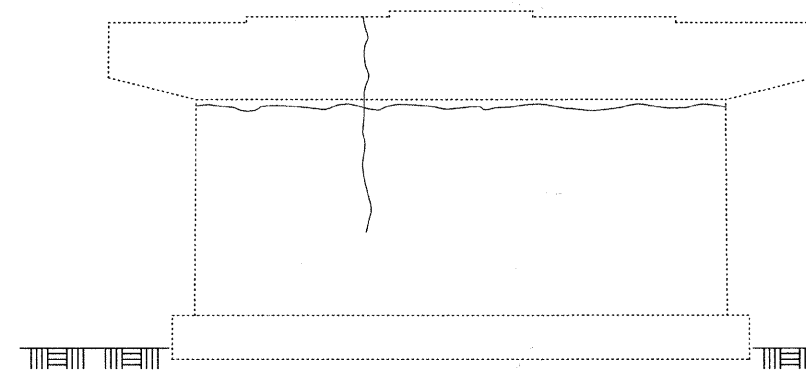
1. The quantities shown are provided as a contingency for estimating purposes only. The area to be repaired shall be determined by the Engineer at the time of construction. Actual repair locations shall be shown on the as-built plans.
2. Crack widths are  $\frac{1}{8}''$  to  $\frac{1}{16}''$  unless otherwise noted.



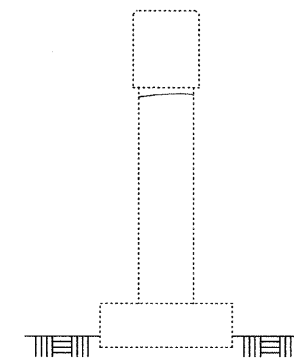
**ELEVATION**  
(Looking South)



**END VIEW**  
(Looking East)



**ELEVATION**  
(Looking North)



**END VIEW**  
(Looking West)

|            |     |
|------------|-----|
| DESIGNED - | JLS |
| CHECKED -  | MRB |
| DRAWN -    | VH  |
| CHECKED -  | MRB |

**benesch**

alfred benesch & company  
Engineers • Surveyors • Planners  
205 North Michigan Avenue, Suite 2400  
Chicago, Illinois 60601  
312-565-0450 Job No. 3808.02

|                             |                |                |                  |                    |              |
|-----------------------------|----------------|----------------|------------------|--------------------|--------------|
| SHEET NO. S31<br>S47 SHEETS | F.A.U.<br>RTE. | SECTION        | COUNTY           | TOTAL<br>SHEETS    | SHEET<br>NO. |
|                             | 341            | 04-00090-07-BR | WILL             | 57                 | 39           |
| FED. ROAD DIST. NO.         |                |                | ILLINOIS         | CONTRACT NO. 63442 |              |
|                             |                |                | FED. AID PROJECT |                    |              |

**PIER 3 REPAIR 1 OF 2**  
**STRUCTURE NO. 099-3298**