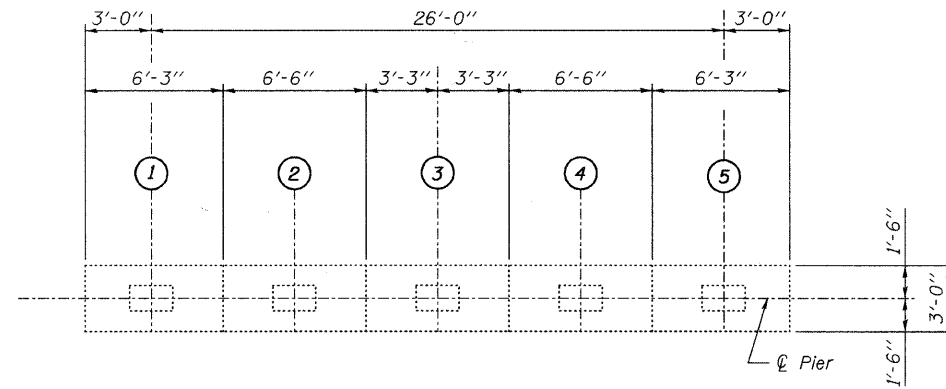


STATE OF ILLINOIS
DEPARTMENT OF TRANSPORTATION

BILL OF MATERIAL

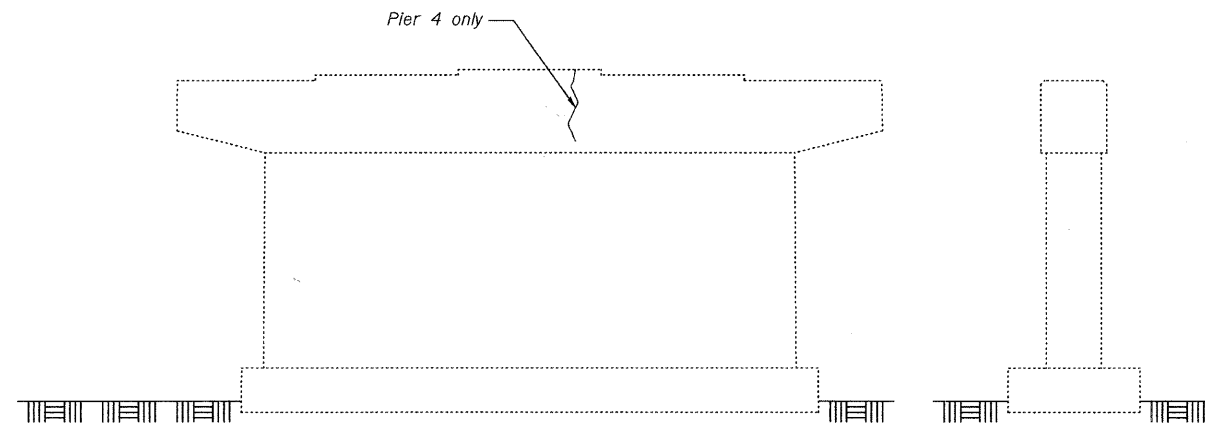
ITEM	UNIT	TOTAL
Epoxy Crack Injection	Foot	40
Structural Repair of Concrete (Depth Greater Than 5 Inches)	Sq. Ft.	10
Structural Repair of Concrete (Depth Equal to or Less Than 5 Inches)	Sq. Ft.	10



TOP PLAN

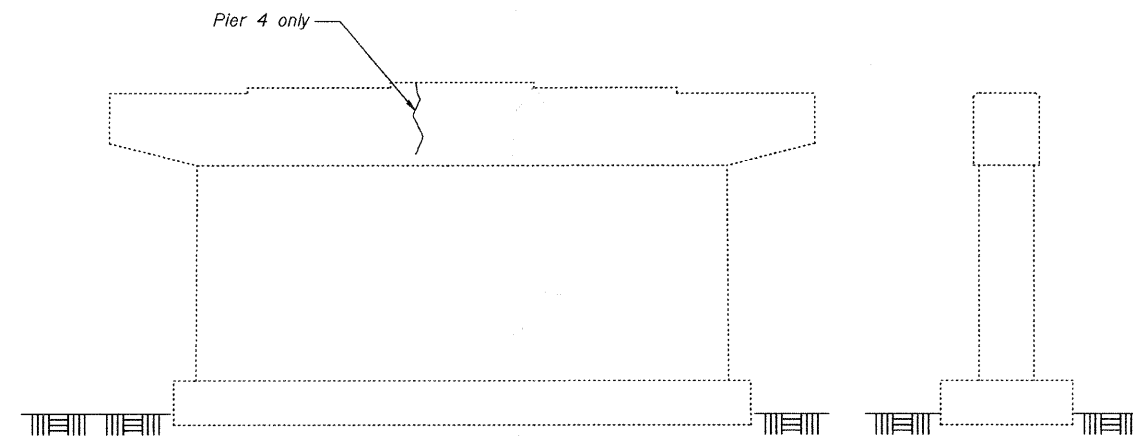
NOTES:

- The quantities shown are provided as a contingency for estimating purposes only. The area to be repaired shall be determined by the Engineer at the time of construction. Actual repair locations shall be shown on the as-built plans.
- Crack widths are $\frac{1}{8}'' \pm \frac{1}{16}''$ unless otherwise noted.



ELEVATION
(Looking South)

END VIEW
(Looking East)



ELEVATION
(Looking North)

END VIEW
(Looking West)

DESIGNED -	JLS
CHECKED -	MRB
DRAWN -	VH
CHECKED -	MRB

benesch

alfred benesch & company
Engineers • Surveyors • Planners
225 North Michigan Avenue, Suite 2400
Chicago, Illinois 60601
312-565-0450 Job No. 3808.02

SHEET NO. S33 S47 SHEETS	F.A.U. RTE.	SECTION	COUNTY	TOTAL SHEETS	SHEET NO.
	341	04-00090-07-BR	WILL	57	41
FED. ROAD DIST. NO.			ILLINOIS	FED. AID PROJECT	
CONTRACT NO. 63442					

PIER 4 AND 5 REPAIRS
STRUCTURE NO. 099-3298

x:\3808\3808.02\engineering_documents_phase.11\brandon_road_bridges\final\0993298-63442-033-pier-4.dgn 12:20:33 PM 1/22/2010