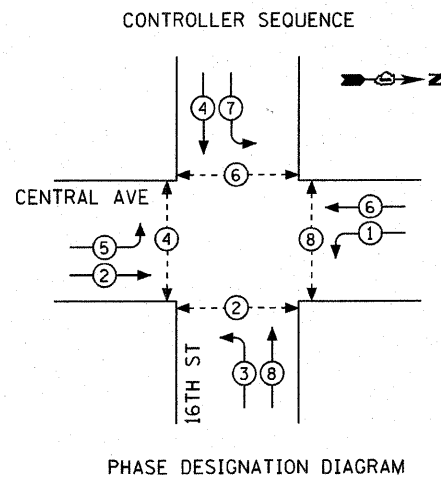
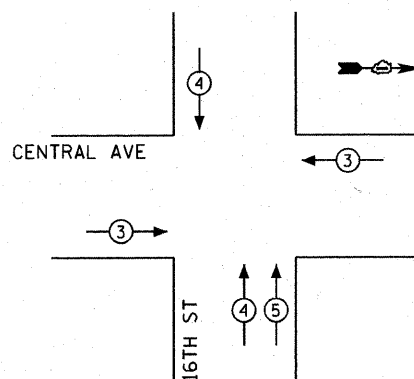


PROPOSED CABLE PLAN



- LEGEND**
- DUAL ENTRY PHASE
 - SINGLE ENTRY PHASE
 - OVERLAP
 - PEDESTRIAN PHASE
 - NUMBER REFERS TO ASSOCIATED PHASE

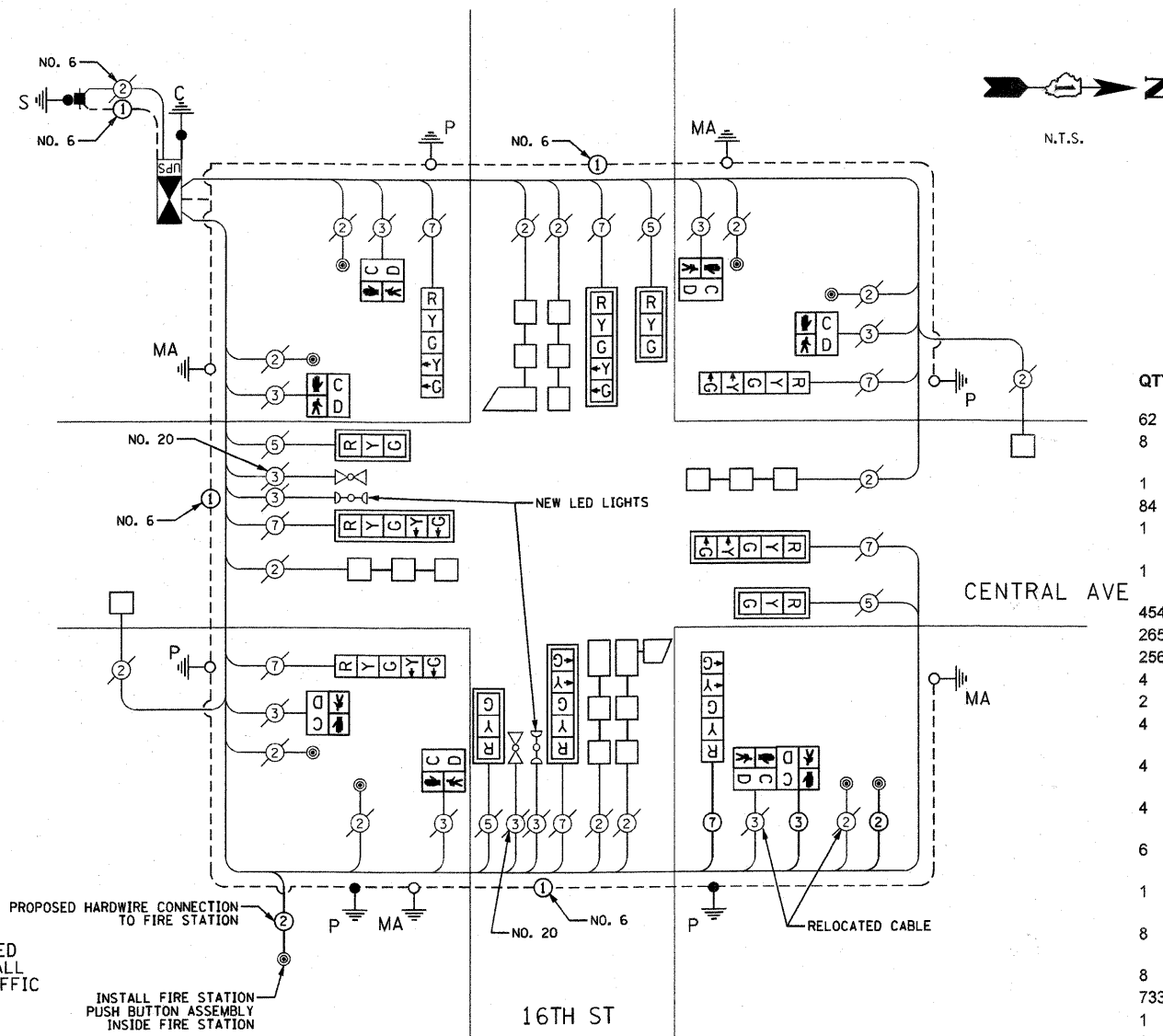
EMERGENCY VEHICLE PREEMPTION SEQUENCE



PROPOSED EMERGENCY VEHICLE PREEMPTORS			
EMERGENCY VEHICLE PREEMPTOR	3	4	5
MOVEMENT	←	↓	↑

EMERGENCY VEHICLE PREEMPTOR "5" SHALL ONLY BE ACTIVATED FROM PUSHBUTTON IN FIRE STATION AND WILL INITIATE AN ALL-RED CLEARANCE PHASE FOLLOWED BY A GREEN BALL AND LEFT TURN ARROW FOR WESTBOUND TRAFFIC

I.D.O.T. TRAFFIC SIGNAL INSTALLATION ELECTRICAL SERVICE REQUIREMENTS					TOTAL WATTAGE
TYPE	NO. LAMPS	WATTAGE (INCAND.)	LED	% OPERATION	
SIGNAL (RED)	12	17		0.50	102.0
(YELLOW)	12	25		0.25	75.0
(GREEN)	12	15		0.25	45.0
ARROW	16	12		0.10	19.2
PED. SIGNAL	8	25		1.00	200.0
CONTROLLER	1	100		1.00	100.0
ILLUM. SIGN				0.05	
FLASHER				0.50	
ENERGY COSTS TO:					TOTAL = 541.2
TOWN OF CICERO 4949 WEST CERMAK ROAD CICERO, ILLINOIS 60804					
ENERGY SUPPLY CONTACT: MIKE BELL					
PHONE: (708) 410-5314					
COMPANY: COMED					



NOTE:
THE TRAFFIC SIGNAL CONTROL EQUIPMENT FOR THIS PROJECT SHALL BE "ECONOLITE" TO ENSURE COMPATIBILITY WITH A FUTURE INTERCONNECT

SCHEDULE OF QUANTITIES

QTY	UNIT	ITEM DESCRIPTION
62	FOOT	CONDUIT IN TRENCH, 2" DIA., GALVANIZED STEEL
8	FOOT	CONDUIT IN TRENCH, 1 1/2" DIA., GALVANIZED STEEL
1	EACH	HANDHOLE
84	FOOT	TRENCH AND BACKFILL FOR ELECTRICAL WORK
1	EACH	MAINTENANCE OF EXISTING TRAFFIC SIGNAL INSTALLATION
1	EACH	FULL-ACTUATED CONTROLLER AND TYPE IV CABINET, SPECIAL
454	FOOT	ELECTRIC CABLE IN CONDUIT, SIGNAL NO. 14 2C
265	FOOT	ELECTRIC CABLE IN CONDUIT, SIGNAL NO. 14 3C
256	FOOT	ELECTRIC CABLE IN CONDUIT, SIGNAL NO. 14 7C
4	FOOT	CONCRETE FOUNDATION, TYPE A
2	EACH	DRILL EXISTING HANDHOLE
4	EACH	SIGNAL HEAD, LED, 1-FACE, 3-SECTION, MAST ARM MOUNTED
4	EACH	SIGNAL HEAD, LED, 1-FACE, 5-SECTION, BRACKET MOUNTED
4	EACH	SIGNAL HEAD, LED, 1-FACE, 5-SECTION, MAST ARM MOUNTED
6	EACH	PEDESTRIAN SIGNAL HEAD, LED, 1-FACE, BRACKET MOUNTED WITH COUNTDOWN TIMER
1	EACH	PEDESTRIAN SIGNAL HEAD, LED, 2-FACE, BRACKET MOUNTED WITH COUNTDOWN TIMER
8	EACH	TRAFFIC SIGNAL BACKPLATE, LOUVERED, ALUMINUM
8	EACH	INDUCTIVE LOOP DETECTOR
733	FOOT	DETECTOR LOOP, TYPE I
1	EACH	LIGHT DETECTOR AMPLIFIER
8	EACH	PEDESTRIAN PUSH-BUTTON
1	EACH	RELOCATE EXISTING TRAFFIC SIGNAL POST
657	FOOT	REMOVE ELECTRIC CABLE FROM CONDUIT
104	FOOT	REMOVE AND REINSTALL ELECTRIC CABLE FROM CONDUIT
1	EACH	REMOVE EXISTING TRAFFIC SIGNAL EQUIPMENT
1	EACH	REMOVE EXISTING CONCRETE FOUNDATION
4	EACH	BASE COVER, LIGHT POLE
1	EACH	SERVICE INSTALLATION, POLE MOUNTED
8	EACH	GROUNDING EXISTING HANDHOLE FRAME AND COVER
1	EACH	UNINTERRUPTABLE POWER SUPPLY
585	FOOT	ELECTRIC CABLE IN CONDUIT, GROUNDING, NO. 6 1C
1	EACH	FIRE PREEMPTOR SWITCH

KLOAN
Konig, Lindgren, O'Hara, Aboona, Inc.
9575 West Higgins Road, Suite 400
Rosemont, Illinois 60018
P: (847) 518-9990 F: (847) 518-9987
PROJECT # 09-158

REVISIONS			
NO.	BY	DATE	DESCRIPTION
1	THK/DMS	1-22-10	PER IDOT REVIEW