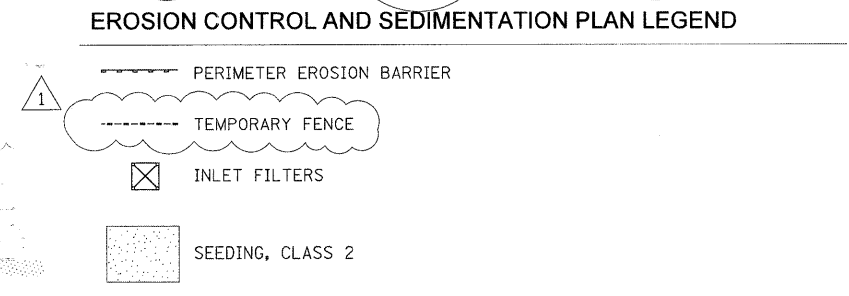


- NOTES**
1. PERIMETER EROSION BARRIER AS SHOWN SHALL BE ERECTED BEFORE WORK BEGINS. THE ENGINEER SHALL HAVE FINAL DETERMINATION OF THE PLACEMENT AND LOCATION OF THE PERIMETER EROSION BARRIER.
  2. EXACT LOCATION OF THE CONSTRUCTION FENCE WILL BE DETERMINED IN THE FIELD AS DIRECTED BY THE ENGINEER TO BE PAID FOR AS "TEMPORARY FENCE".
  3. SEE PROPOSED GRADING AND DRAINAGE PLAN FOR GRADING INFORMATION.
  4. REMOVE INLET FILTER UPON FINAL SHAPING AND GRADING AS DIRECTED BY THE ENGINEER.



FILE NAME = 49105_sht_erosion-mulch.dgn	USER NAME = lsupencheck	DESIGNED - LLS	REVISED  03/24/2010 ADD. NO. 1
DESIGNED BY <b>HNTB</b>	PLLOT DATE = 24-MAR-2010	DRAWN - LLS	REVISED - ---
		CHECKED - KJK	REVISED - ---
		DATE - 02/16/2010	REVISED - ---

**STATE OF ILLINOIS  
DEPARTMENT OF TRANSPORTATION**

**CHICAGO BOTANIC GARDEN - CLC ENTRYWAY  
SOUTH-END EROSION AND SEDIMENTATION CONTROL PLAN**

SCALE: 1"=30'    SHEET NO. 1 OF 1 SHEETS    STA. N/A TO STA. N/A

F.A. RTE. N/A	SECTION 08-00061-00-RS	COUNTY COOK	TOTAL SHEETS 28	SHEET NO. 11
FED. ROAD DIST. NO. -		ILLINOIS FED. AID PROJECT		
		CONTRACT NO. 63449		