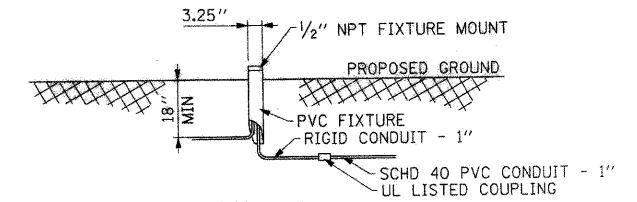
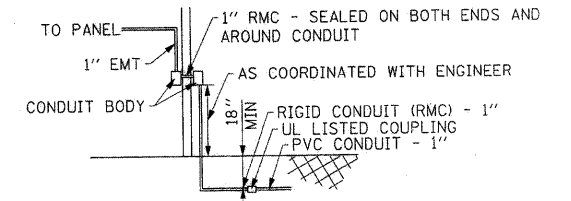


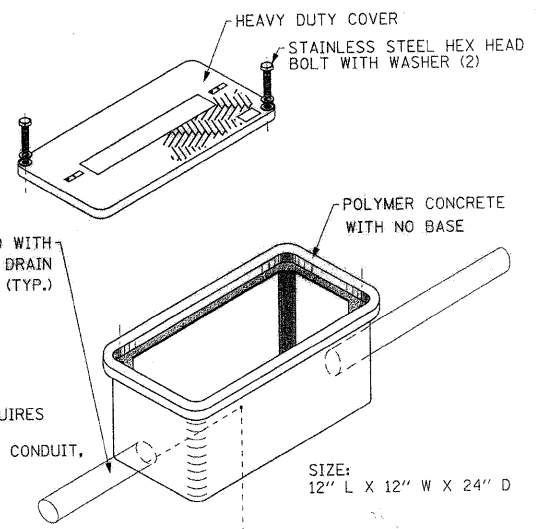
DETAIL A
CONCRETE FOUNDATION DETAIL
PEDESTRIAN LIGHTS (COMPACT BOLLARD)



DETAIL B
MOUNTING DETAIL
UPLIGHTS (TREE ACCENT LIGHT)



DETAIL C
BUILDING PENETRATION DETAIL



DETAIL D
HANDHOLE DETAIL

NOTES

1. THE PROPOSED ELECTRICAL LAYOUT TO BE STAKED BY CONTRACTOR AND APPROVED BY ENGINEER PRIOR TO INSTALLATION.
2. EXISTING UTILITIES SHOWN ARE APPROXIMATE. CONTRACTOR TO VERIFY.
3. SEE THE NORTH-END IRRIGATION PLAN FOR IRRIGATION LAYOUT AND DETAILS.
4. SEE THE NORTH-END LANDSCAPE PLAN FOR PROPOSED LANDSCAPE DESIGN.
5. CONTRACTOR TO FURNISH/INSTALL ONE (1) 120V, 20A SINGLE POLE BREAKER IN EXISTING DISTRIBUTION PANEL. ROUTE OF CABLE AND CONDUIT INSIDE BUILDING AND OUT TO HANDHOLE TO BE DETERMINED IN THE FIELD AND APPROVED BY THE ENGINEER.
6. CONTRACTOR TO FURNISH/INSTALL HANDHOLE AND SPLICE CONDUCTORS FOR UPLIGHTS AND PEDESTRIAN LIGHTS INSIDE THE HANDHOLE.
7. ENGINEER TO DETERMINE LOCATION OF HONEYWELL CONTROLLER WITHIN THE CLC BUILDING. CONTROLLER WILL NEED LOCAL POWER. CONNECTION TO EXISTING HONEYWELL EQUIPMENT WILL BE BY OTHERS.

ADDED SHEET

ELECTRICAL PLAN LEGEND

- PEDESTRIAN LIGHTS (SEE DETAIL A FOR BASE)
- ◆ UPLIGHTS (SEE DETAIL B FOR MOUNTING)
- HANDHOLE (SEE DETAIL D)
- CONDUIT IN TRENCH, 1" DIAMETER, SCHED 40 PVC - 3 1/2 #8
- - - - SEE NOTE 5



NOTES:

1. ANY HANDHOLE PENETRATED WITH METALLIC CONDUIT REQUIRES A GROUND ROD (COPPER CLAD STEEL), INSULATED, XHHW #2 GROUND, UL LISTED GROUNDING BUSHING ON METALLIC CONDUIT, AND AN EXOTHERMIC WELD TO THE GROUND ROD.
2. ALL PVC CONDUIT SHALL HAVE NON-GROUNDED INSULATED BUSHINGS.



FILE NAME = 49105_sht_electr\clc-clc.dgn	USER NAME = lsupencheck	DESIGNED - RAJ	REVISED - 03/24/2010 ADD. NO. 1
DESIGNED BY HNTB	PLOT DATE = 24-MAR-2010	DRAWN - LLS	REVISED -
		CHECKED - MCD	REVISED -
		DATE - 03/19/2010	REVISED -

**STATE OF ILLINOIS
DEPARTMENT OF TRANSPORTATION**

CHICAGO BOTANIC GARDEN - CLC ENTRYWAY			
NORTH-END ELECTRICAL PLAN			
SCALE: 1" = 20'	SHEET NO. 1 OF 1 SHEETS	STA. N/A	TO STA. N/A

F.A. RTE. N/A	SECTION 08-00061-00-RS	COUNTY COOK	TOTAL SHEETS 28	SHEET NO. 16A
FED. ROAD DIST. NO. - [ILLINOIS] FED. AID PROJECT		CONTRACT NO. 63449		