

SUMMARY OF QUANTITIES

CODE NO.	PAY ITEM DESCRIPTION	UNIT	TOTAL QUANTITY	ROADWAY 80% FEDERAL 20% LOCAL 1000-2A
20100500	TREE REMOVAL, ACRES	ACRE	1	1
20101100	TREE TRUNK PROTECTION	EACH	9	9
20101200	TREE ROOT PRUNING	EACH	9	9
20101400	NITROGEN FERTILIZER NUTRIENT	POUND	70	70
20101500	PHOSPHORUS FERTILIZER NUTRIENT	POUND	70	70
20101600	POTASSIUM FERTILIZER NUTRIENT	POUND	70	70
20200100	EARTH EXCAVATION	CU YD	2,600	2,600
20200410	EARTH EXCAVATION (SPECIAL)	CU YD	4,830	4,830
20700420	POROUS GRANULAR EMBANKMENT, SUBGRADE	CU YD	1,310	1,310
20800150	TRENCH BACKFILL	CU YD	151	151
21101505	TOPSOIL EXCAVATION AND PLACEMENT	CU YD	1,474	1,474
21101665	TOPSOIL FURNISH AND PLACE, 18"	SQ YD	6,038	6,038
25000200	SEEDING, CLASS 2	ACRE	0.53	0.53
25200100	SODDING	SQ YD	5,618	5,618
25400100	PERENNIAL PLANTS	UNIT	16.80	16.80
25400105	PERENNIAL PLANTS	EACH	240.00	240.00
28000250	TEMPORARY EROSION CONTROL SEEDING	POUND	900	900
28000400	PERIMETER EROSION BARRIER	FOOT	1,328	1,328
28000510	INLET FILTERS	EACH	12	12
28100105	STONE RIPRAP, CLASS A3	SQ YD	5	5
28200200	FILTER FABRIC	SQ YD	5	5
35102400	AGGREGATE BASE COURSE, TYPE B 12"	SQ YD	2,150	2,150
40300100	BITUMINOUS MATERIALS (PRIME COAT)	GALLON	1,072	1,072
40603080	HOT-MIX ASPHALT BINDER COURSE, IL-19.0, N50	TON	270	270
40603310	HOT-MIX ASPHALT SURFACE COURSE, MIX "C", N50	TON	180	180
42400200	PORTLAND CEMENT CONCRETE SIDEWALK 5 INCH	SQ FT	3,585	3,585
42400800	DETECTABLE WARNINGS	SQ FT	76	76
44000200	DRIVEWAY PAVEMENT REMOVAL	SQ YD	82	82
44000500	COMBINATION CURB AND GUTTER REMOVAL	FOOT	1,972	1,972
48301000	PROTECTIVE COAT	SQ YD	590	590
54213657	PRECAST REINFORCED CONCRETE FLARED END SECTIONS 12"	EACH	1	1
550A0050	STORM SEWERS, CLASS A, TYPE 1 12"	FOOT	92	92
550A0340	STORM SEWERS, CLASS A, TYPE 2 12"	FOOT	183	183
550A0360	STORM SEWERS, CLASS A, TYPE 2 15"	FOOT	50	50
55100300	STORM SEWER REMOVAL 8"	FOOT	122	122
55100700	STORM SEWER REMOVAL 15"	FOOT	50	50
60107600	PIPE UNDERDRAINS 4"	FOOT	812	812
60108000	PIPE UNDERDRAINS 12"	FOOT	187	187
60200805	CATCH BASINS, TYPE A, 4'-DIAMETER, TYPE 8 GRATE	EACH	4	4
60201305	CATCH BASINS, TYPE A, 4'-DIAMETER, TYPE 15 FRAME AND LID	EACH	2	2
60218400	MANHOLES, TYPE A, 4'-DIAMETER, TYPE 1 FRAME, CLOSED LID	EACH	2	2
60219000	MANHOLES, TYPE A, 4'-DIAMETER, TYPE 8 GRATE	EACH	2	2
60237000	INLETS, TYPE A, TYPE 15 FRAME AND LID	EACH	2	2
60250200	CATCH BASINS TO BE ADJUSTED	EACH	1	1
60255500	MANHOLES TO BE ADJUSTED	EACH	1	1
60500060	REMOVING INLETS	EACH	3	3
60600605	CONCRETE CURB, TYPE B	FOOT	532	532
60608250	COMBINATION CONCRETE CURB AND GUTTER, TYPE M-2.06	FOOT	949	949
60608600	COMBINATION CONCRETE CURB AND GUTTER, TYPE M-6.06	FOOT	202	202
66411900	TEMPORARY FENCE	FOOT	2,090	2,090
67000400	ENGINEER'S FIELD OFFICE, TYPE A	CAL MO	6	6
67100100	MOBILIZATION	L SUM	1	1
70101800	TRAFFIC CONTROL AND PROTECTION (SPECIAL)	L SUM	1	1
78000100	THERMOPLASTIC PAVEMENT MARKING - LETTERS AND SYMBOLS	SQ FT	25	25
78000200	THERMOPLASTIC PAVEMENT MARKING - LINE 4"	FOOT	328	328
78000400	THERMOPLASTIC PAVEMENT MARKING - LINE 6"	FOOT	48	48
78000650	THERMOPLASTIC PAVEMENT MARKING - LINE 24"	FOOT	27	27
80400105	ELECTRIC SERVICE INSTALLATION, SPECIAL	EACH	1	1
81012300	CONDUIT IN TRENCH, 1" DIA., PVC	FOOT	644	644
81400105	HANDHOLE (SPECIAL)	EACH	1	1
81700325	ELECTRIC CABLE IN CONDUIT, 600V (EPR-TYPE RHW) 3-1/C NO. 8	FOOT	713	713
87800110	CONCRETE FOUNDATION, TYPE A (SPECIAL)	FOOT	7	7
20013798	CONSTRUCTION LAYOUT	L SUM	1	1

* DENOTES SPECIAL PROVISIONS
DENOTES SPECIALITY ITEM

SUMMARY OF QUANTITIES

CODE NO.	PAY ITEM DESCRIPTION	UNIT	TOTAL QUANTITY	ROADWAY 80% FEDERAL 20% LOCAL 1000-2A
Z0022800	FENCE REMOVAL	FOOT	310	310
C2008318	SHRUB, ROSA PURPLE PAVEMENT (PURPLE PAVEMENT ROSE), 18" HEIGHT, CONTAINER	EACH	70	70
K0030421	PERENNIAL PLANTS, NARCISSUS	UNIT	30.00	30.00
K1004465	PERENNIAL PLANTS, BULBS	UNIT	12.00	12.00
K1005875	TREE TRANSPLANT	EACH	18	18
X0320903	CIRCUIT BREAKER AND ENCLOSURE	EACH	1	1
X0656300	PAVEMENT REMOVAL AND REPLACEMENT	SQ YD	6	6
XX000052	REMOVE EXISTING WATERMAIN	FOOT	879	879
XX003855	IRRIGATION SYSTEM	L SUM	1	1
XX004998	PVC WATER MAIN 6"	FOOT	670	670
XX005434	WATER SERVICE LINE, SPECIAL	FOOT	2,192	2,192
XX006077	GATE VALVE AND BOX 6"	EACH	2	2
XX006282	STORM SEWERS, DUCTILE IRON, TYPE 1 12"	FOOT	121	121
XX006755	STOP VALVE 3/4" AND VALVE BOX	EACH	13	13
XX007186	QUICK COUPLE	EACH	22	22
XX007263	GATE VALVE WITH BOX 4"	EACH	3	3
XX007469	UPLIGHTS	EACH	10	10
XX008001	AGGREGATE PATH, 8"	SQ YD	291	291
XX008185	PVC WATER MAIN 4"	FOOT	389	389
XX008207	LIGHTS PEDESTRIAN	EACH	7	7
XX011700	WATER MAIN FITTINGS	POUND	960	960
C2C014G5	SHRUB, CORNUS MAS 'DRIPPING CHERRIES' (DRIPPING CHERRIES CORNELIAN CHERRY DOG WOOD), 5-GALLON CONTAINER	EACH	254	254
C2C024G2	SHRUB, DIERVILLA 'COOL SPLASH' (COOL SPLASH DIERVILLA), 24" PLANT, 2 GALLON CONT.	EACH	148	148
A2005055	TREE, GYMNOCLADUS DIOICUS 'PRAIRIE TITAN' (PRAIRIE TITAN KENTUCKY COFFEETREE), 5" CALIPER, BALLED AND BURLAPPED	EACH	9	9
A2007212	TREE, QUERCUS X SCHUETTI (SCHUETTES OAK), 7" CALIPER, BALLED AND BURLAPPED	EACH	1	1

* DENOTES SPECIAL PROVISIONS
DENOTES SPECIALITY ITEM

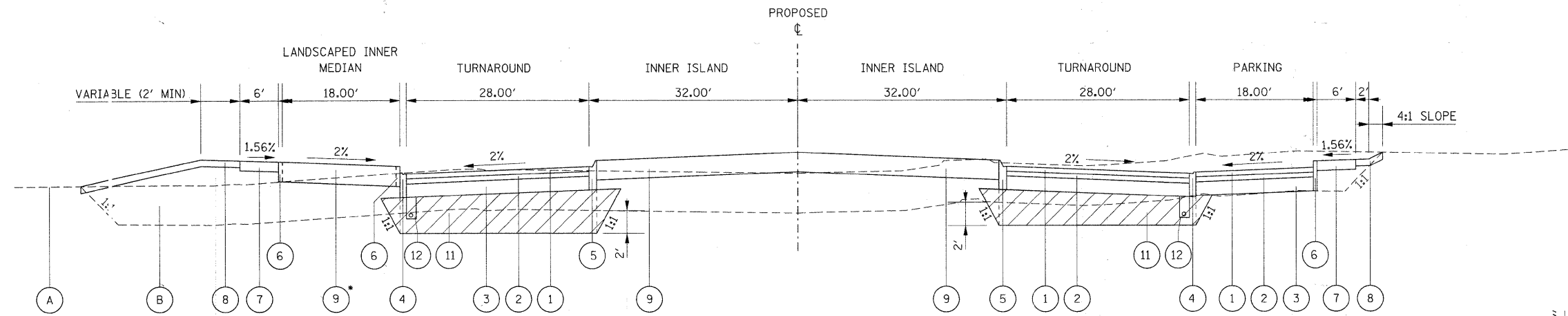
FILE NAME = 49105_sh1_sum-quant.dgn	USER NAME = Isupencheck	DESIGNED - LLS	REVISED - 03/24/2010 ADD. NO. 1
DESIGNED BY HNTB	PLOT DATE = 24-MAR-2010	DRAWN - LLS	REVISED - ---
		CHECKED - KJK	REVISED - ---
		DATE - 02/16/2010	REVISED - ---

STATE OF ILLINOIS
DEPARTMENT OF TRANSPORTATION

CHICAGO BOTANIC GARDEN - CLC ENTRYWAY
SUMMARY OF QUANTITIES

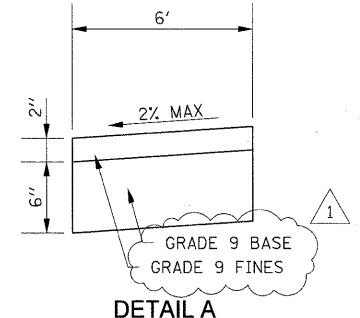
SCALE: N.T.S. SHEET NO. 1 OF 1 SHEETS STA. N/A TO STA. N/A

F.A. RTE.	SECTION	COUNTY	TOTAL SHEETS	SHEET NO.
N/A	08-00061-00-RS	COOK	28	3
CONTRACT NO. 63449			FED. ROAD DIST. NO. [ILLINOIS] FED. AID PROJECT	



*SEE NORTH-END PLAN AND PROFILE SHEET AND NORTH-END LANDSCAPING PLAN FOR LANDSCAPED INNER MEDIAN PLACEMENT.

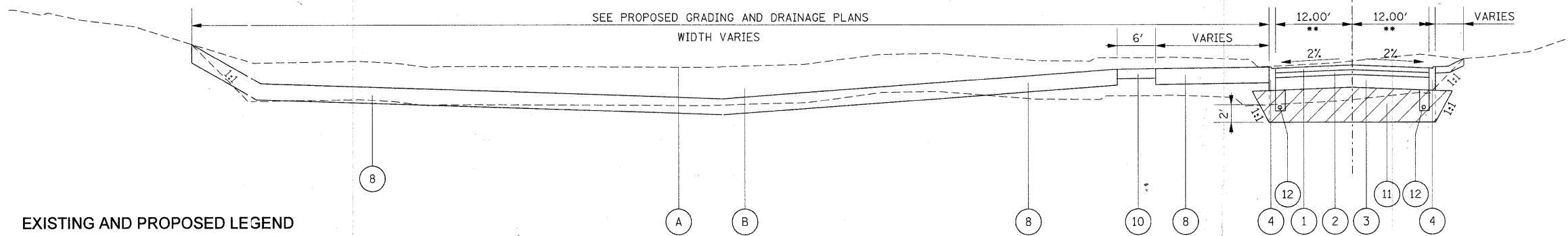
TURNAROUND PROPOSED TYPICAL SECTION
STA. 2+88.79 TO STA. 4+08.80



DETAIL A
AGGREGATE PATH, 8" (N.T.S.)

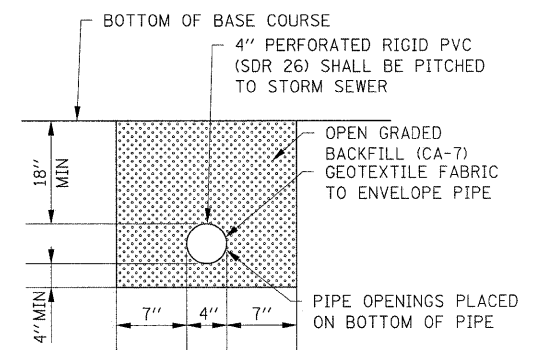
EXISTING STONE PARKING LOT TO BE REMOVED

SEE PROPOSED GRADING AND DRAINAGE PLANS
WIDTH VARIES



ENTRANCE DRIVE PROPOSED TYPICAL SECTION
STA. 0+47.66 TO STA. 2+51.53

** WIDTH VARIES, 12' TO 28' -- STA. 2+51.53 TO STA. 2+88.79



DETAIL B
PIPE UNDERDRAIN 4" (N.T.S.)

EXISTING AND PROPOSED LEGEND

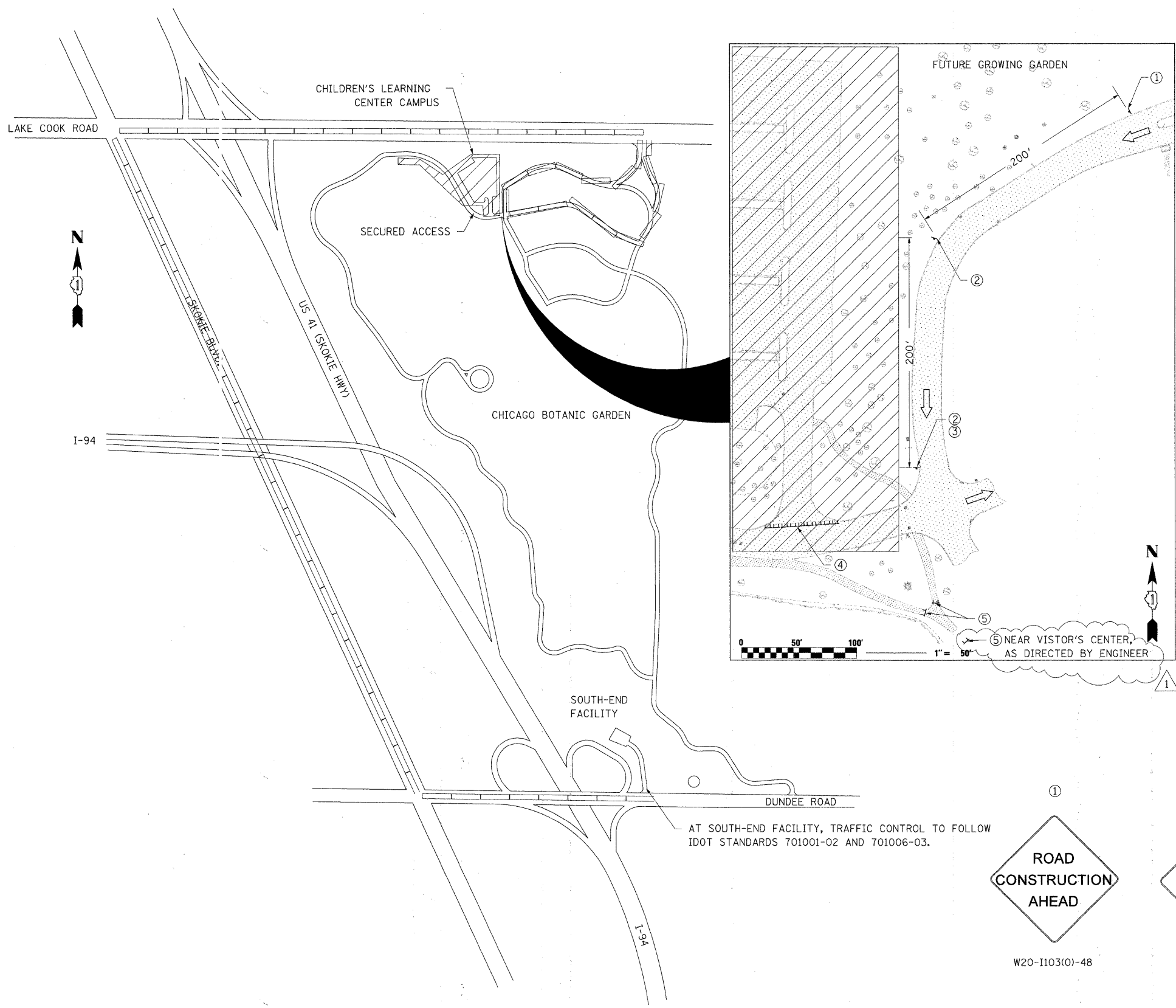
- (A) EXISTING GROUND
- (B) EXISTING VARIABLE DEPTH STONE PARKING LOT TO BE REMOVED (SEE NOTE 3)
- 1 1/2" HOT-MIX ASPHALT SURFACE COURSE, MIX "C" N50
- 2 2/4" HOT-MIX ASPHALT BINDER COURSE, IL-19.0, N50
- 3 12" AGGREGATE BASE COURSE TYPE B
- 4 COMBINATION CONCRETE CURB AND GUTTER, TYPE M-2.06
- 5 COMBINATION CONCRETE CURB AND GUTTER, TYPE M-6.06
- 6 CONCRETE CURB, TYPE B
- 7 5" PORTLAND CEMENT CONCRETE SIDEWALK
- 8 TOPSOIL FURNISH AND PLACE - 18", SODDING, NITROGEN, PHOSPHORUS, AND POTASSIUM FERTILIZER NUTRIENTS
- 9 TOPSOIL FURNISH AND PLACE - 18"
- 10 AGGREGATE SIDEWALK, 8" (SEE DETAIL A)
- 11 POROUS GRANULAR EMBANKMENT, SUBGRADE (SEE NOTE 4)
- 12 PIPE UNDERDRAINS 4" (SEE DETAIL B)

NOTES

1. EXACT LOCATIONS OF THE PROPOSED SIDEWALKS ARE SHOWN ON THE PLANS.
2. REFER TO THE PROPOSED GRADING AND DRAINAGE PLAN FOR PROPOSED GRADING.
3. THE VARIABLE DEPTH (MAX 3') EXISTING STONE PARKING LOT WILL BE REMOVED AND DISPOSED OF AT THE SOUTH-END FACILITY AT DUNDEE ROAD (AT THE SOUTHERN END OF THE CHICAGO BOTANIC GARDEN).
4. AT THE LOCATIONS NOTED (UNDER TRAVEL LANES), PGE-SUBGRADE WILL BE PLACED AT A LOWER LIMIT OF 2' BELOW THE DEPTH OF THE REMOVED STONE TO A UPPER LIMIT OF THE BASE COURSE. SEE THE CROSS SECTIONS FOR ADDITIONAL INFORMATION.

HOT-MIX ASPHALT MIXTURE REQUIREMENTS	
MIXTURE TYPE	AIR VOIDS
PAVEMENT HOT-MIX ASPHALT SURFACE COURSE, MIX "C", N50 (IL 9.5MM): 1/2"	4% @ 50 GYR
HOT-MIX ASPHALT BINDER COURSE, IL-19.0, N50	4% @ 50 GYR
THE UNIT WEIGHT USED TO CALCULATE ALL HOT-MIX ASPHALT SURFACE MIXTURES IS 112 LBS/SQ YD/IN	
THE "AC TYPE" FOR POLYMERIZED HMA MIXES SHALL BE "SBS/SBR PG 70-22" AND FOR NON-POLYMERIZED HMA THE "AC TYPE" SHALL BE "PG 64-22" UNLESS MODIFIED BY DISTRICT ONE SPECIAL PROVISIONS. FOR "PERCENT OF RAP" SEE DISTRICT ONE SPECIAL PROVISIONS	

TRAFFIC CONTROL PLAN



GENERAL NOTES FOR TRAFFIC CONTROL

THE CONTRACTOR WILL FOLLOW ENTRANCE AND EXIT ROUTES AS DIRECTED BY THE ENGINEER.

ALL TRAFFIC CONTROL DEVICES SHALL CONFORM TO THE TRAFFIC CONTROL PLANS OR THE LATEST EDITION OF THE STATE OF ILLINOIS SUPPLEMENT TO THE NATIONAL "MANUAL OF UNIFORM TRAFFIC CONTROL DEVICES FOR STREETS AND HIGHWAYS" (MUTCD) AND SHALL BE IN PLACE BEFORE CONSTRUCTION COMMENCES.

THE TRAFFIC CONTROL PLANS SHALL SERVE AS A GUIDE FOR THE SAFE DIVERSION OF TRAFFIC DURING THE EXECUTION OF THIS CONTRACT. ANY CONTRACTOR-PROPOSED TRAFFIC CONTROL PLANS SHALL BE SUBMITTED FOR THE WRITTEN APPROVAL OF THE ENGINEER.

THE SIZES OF THE SIGNS NOT SPECIFIED IN THESE PLANS SHALL BE AS REQUIRED BY THE "MUTCD".

ALL EXISTING SIGNING THAT IS NOT APPLICABLE WHILE THE CONSTRUCTION IS IN EFFECT SHALL BE COMPLETELY COVERED OR REMOVED BY THE CONTRACTOR.

ALL BARRICADES, VERTICAL PANELS, AND/OR DRUMS SHALL BE EQUIPPED WITH MONO-DIRECTIONAL STEADY BURNING LIGHTS.

THE CONTRACTOR SHALL BE RESPONSIBLE FOR ENSURING THAT ALL BARRICADES, SIGNS, LIGHTS, AND OTHER DEVICES INSTALLED BY HIM/HER ARE IN PLACE AND OPERATIONAL 24 HOURS EACH DAY INCLUDING SUNDAYS AND HOLIDAYS DURING THE TIME THIS CONSTRUCTION IS IN EFFECT.

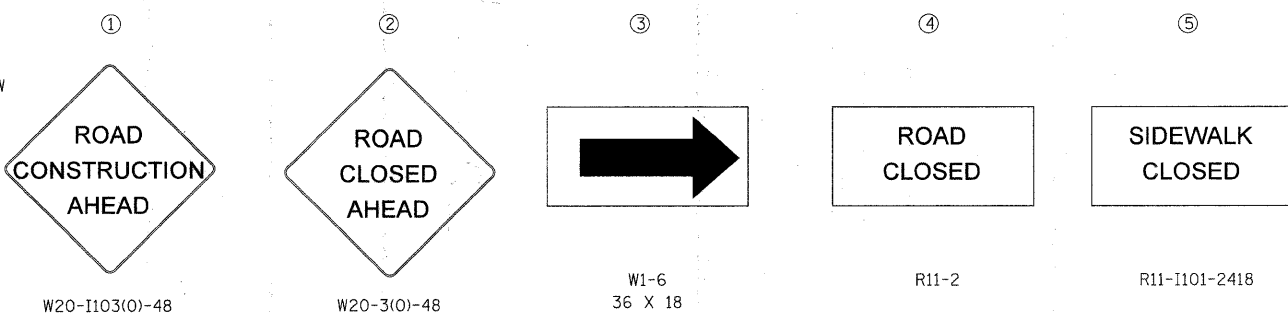
AS A MINIMUM, ALL AMBER FLASHING LIGHTS THAT ARE REQUIRED SHALL MEET THE REQUIREMENTS FOR A LOW INTENSITY FLASHING LIGHTS IN ARTICLE 1084.01 OF THE STANDARD SPECIFICATIONS. ALL LIGHTS SHALL OPERATE DURING HOURS OF DARKNESS. ONLY LIGHTS THAT HAVE BEEN APPROVED BY IDOT SHALL BE USED.

THE EXACT NUMBER, LOCATION, AND SPACING OF ALL SIGNS AND TRAFFIC CONTROL DEVICES MAY BE ADJUSTED TO FIT FIELD CONDITIONS AS DIRECTED BY THE ENGINEER.

ALL UNBALLASTED TYPE I AND TYPE II BARRICADES SHALL HAVE TWO SANDBAGS ON THE BOTTOM RAIL.

LEGEND

- ROUTE TO AND FROM THE NORTH-END FACILITY TO THE SOUTH-END FACILITY
- WORK ZONE
- TYPE III BARRICADE W/2 FLASHING BEACONS (NO. OF BARRICADES AS DIRECTED BY ENGINEER)
- DIRECTION OF TRAFFIC
- CONSTRUCTION SIGN



AT SOUTH-END FACILITY, TRAFFIC CONTROL TO FOLLOW IDOT STANDARDS 701001-02 AND 701006-03.

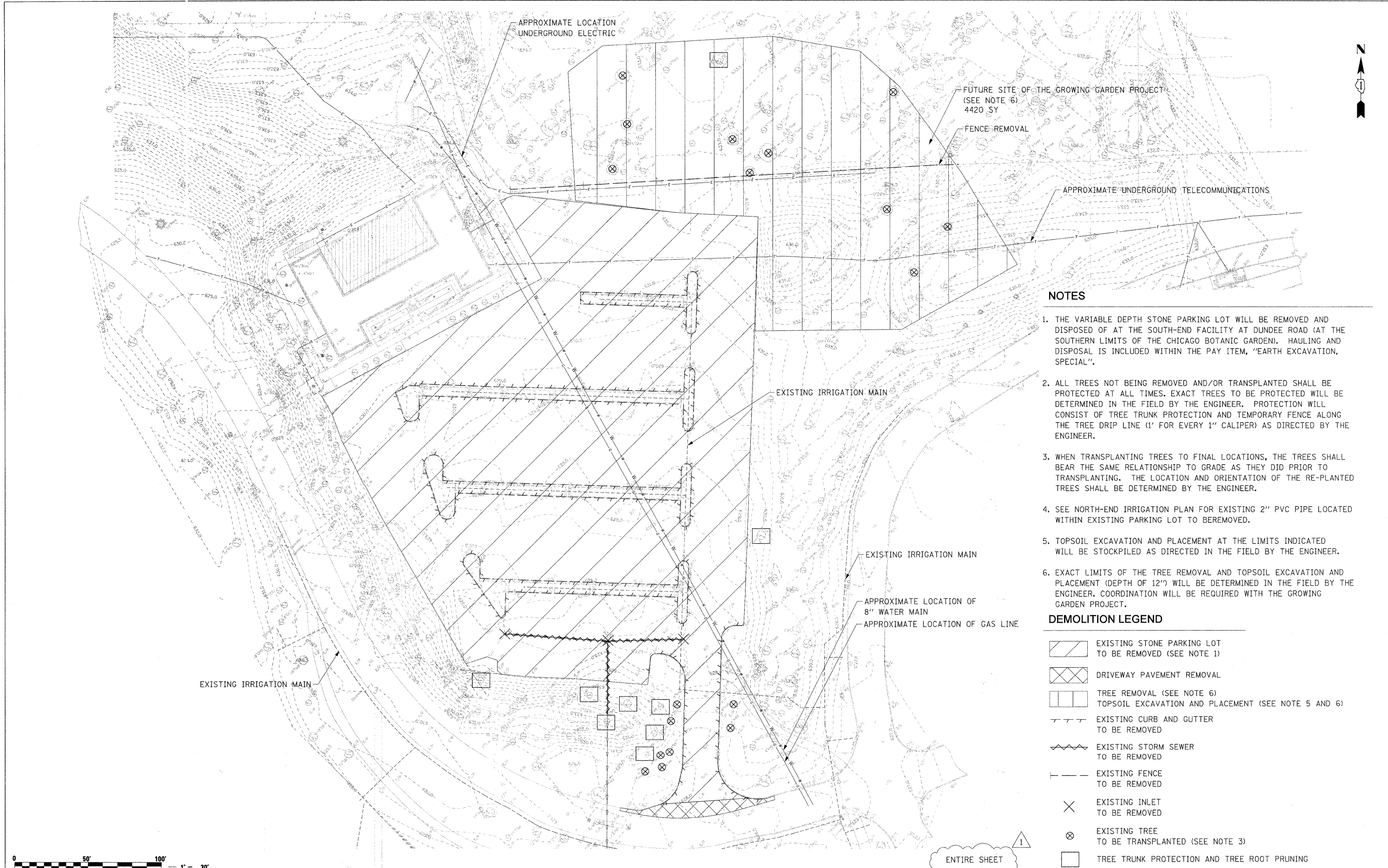
FILE NAME = 49105_sht_trafficcontrol.dgn	USER NAME = supencheck	DESIGNED - LLS	REVISED - 03/24/2010 ADD. NO. 1
DESIGNED BY HNTB	PLOT DATE = 24-MAR-2010	DRAWN - LLS	REVISED - ---
		CHECKED - KJK	REVISED - ---
		DATE - 02/16/2010	REVISED - ---

STATE OF ILLINOIS
DEPARTMENT OF TRANSPORTATION

CHICAGO BOTANIC GARDEN - CLC ENTRYWAY
TRAFFIC CONTROL PLAN

SCALE: NTS SHEET NO. 1 OF 1 SHEETS STA. N/A TO STA. N/A

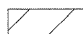
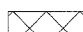

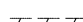





F.A. RTE. N/A	SECTION 08-00061-00-RS	COUNTY COOK	TOTAL SHEETS 28	SHEET NO. 6
FED. ROAD DIST. NO. ILLINOIS FED. AID PROJECT CONTRACT NO. 63449				



NOTES

1. THE VARIABLE DEPTH STONE PARKING LOT WILL BE REMOVED AND DISPOSED OF AT THE SOUTH-END FACILITY AT DUNDEE ROAD (AT THE SOUTHERN LIMITS OF THE CHICAGO BOTANIC GARDEN). HAULING AND DISPOSAL IS INCLUDED WITHIN THE PAY ITEM, "EARTH EXCAVATION, SPECIAL".
2. ALL TREES NOT BEING REMOVED AND/OR TRANSPLANTED SHALL BE PROTECTED AT ALL TIMES. EXACT TREES TO BE PROTECTED WILL BE DETERMINED IN THE FIELD BY THE ENGINEER. PROTECTION WILL CONSIST OF TREE TRUNK PROTECTION AND TEMPORARY FENCE ALONG THE TREE DRIP LINE (1' FOR EVERY 1" CALIPER) AS DIRECTED BY THE ENGINEER.
3. WHEN TRANSPLANTING TREES TO FINAL LOCATIONS, THE TREES SHALL BEAR THE SAME RELATIONSHIP TO GRADE AS THEY DID PRIOR TO TRANSPLANTING. THE LOCATION AND ORIENTATION OF THE RE-PLANTED TREES SHALL BE DETERMINED BY THE ENGINEER.
4. SEE NORTH-END IRRIGATION PLAN FOR EXISTING 2" PVC PIPE LOCATED WITHIN EXISTING PARKING LOT TO BE REMOVED.
5. TOPSOIL EXCAVATION AND PLACEMENT AT THE LIMITS INDICATED WILL BE STOCKPILED AS DIRECTED IN THE FIELD BY THE ENGINEER.
6. EXACT LIMITS OF THE TREE REMOVAL AND TOPSOIL EXCAVATION AND PLACEMENT (DEPTH OF 12") WILL BE DETERMINED IN THE FIELD BY THE ENGINEER. COORDINATION WILL BE REQUIRED WITH THE GROWING GARDEN PROJECT.

DEMOLITION LEGEND

-  EXISTING STONE PARKING LOT TO BE REMOVED (SEE NOTE 1)
-  DRIVEWAY PAVEMENT REMOVAL
-  TREE REMOVAL (SEE NOTE 6)
TOPSOIL EXCAVATION AND PLACEMENT (SEE NOTE 5 AND 6)
-  EXISTING CURB AND GUTTER TO BE REMOVED
-  EXISTING STORM SEWER TO BE REMOVED
-  EXISTING FENCE TO BE REMOVED
-  EXISTING INLET TO BE REMOVED
-  EXISTING TREE TO BE TRANSPLANTED (SEE NOTE 3)
-  TREE TRUNK PROTECTION AND TREE ROOT PRUNING



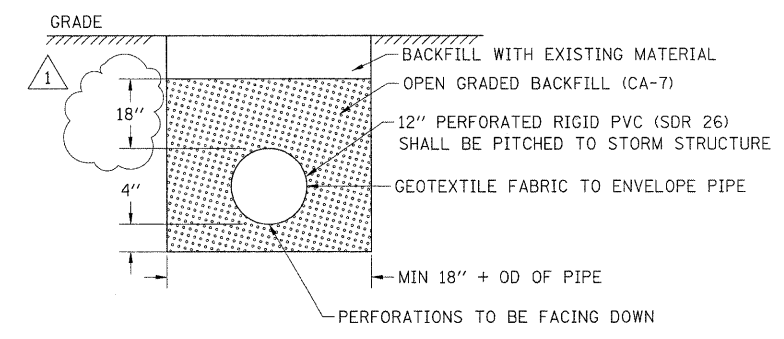
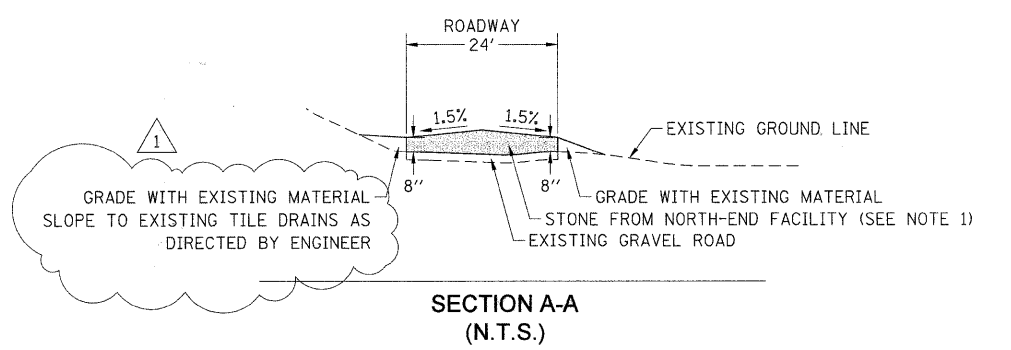
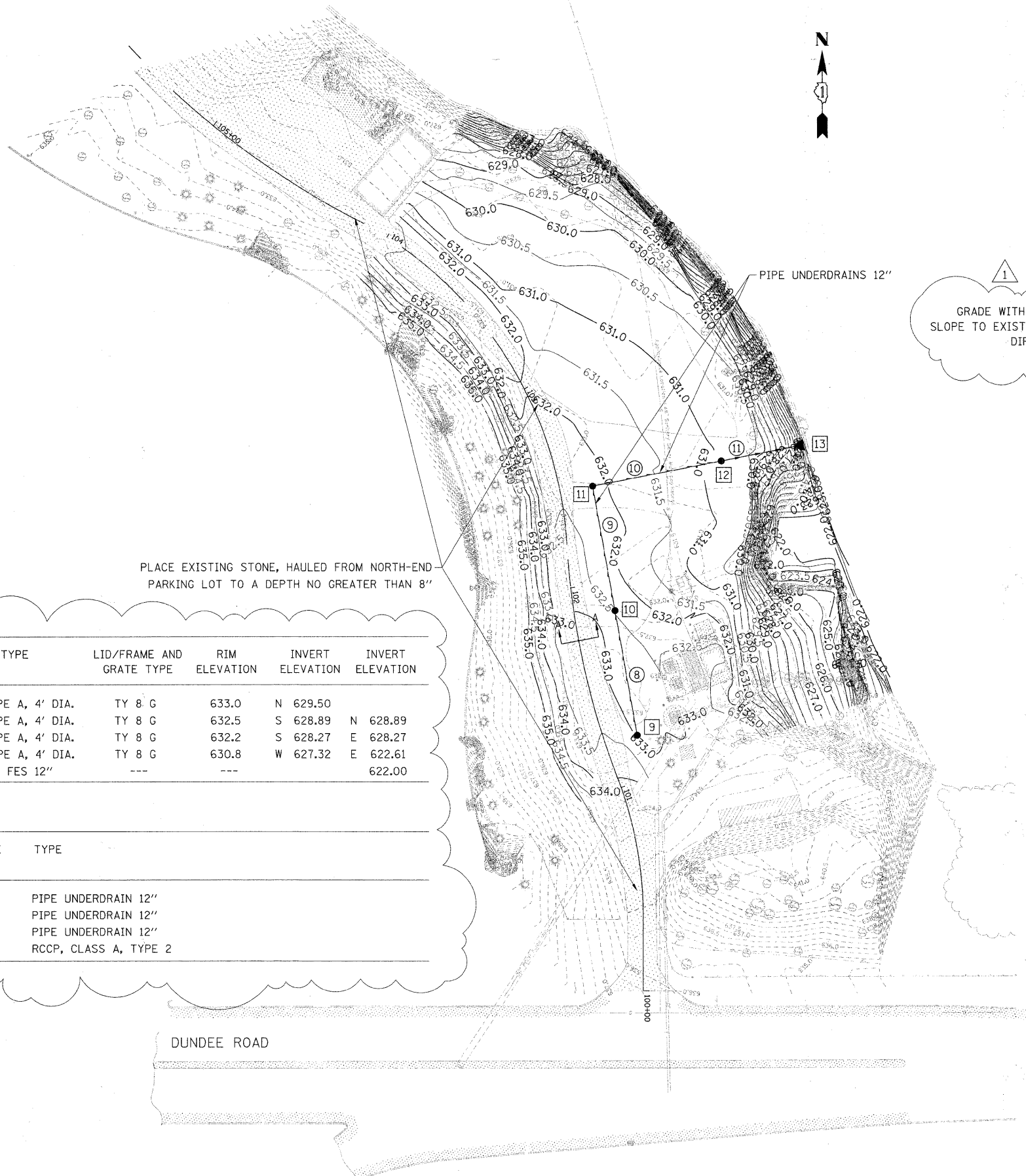
ENTIRE SHEET 1

FILE NAME = 49105_sh1_demo-clc.dgn	USER NAME = supencheck	DESIGNED - LLS	REVISED 1 03/24/2010 ADD. NO. 1
DESIGNED BY HNTB	PLOT DATE = 24-MAR-2010	DRAWN - LLS	REVISED -
		CHECKED - KJK	REVISED -
		DATE - 02/16/2010	REVISED -

**STATE OF ILLINOIS
DEPARTMENT OF TRANSPORTATION**

CHICAGO BOTANIC GARDEN - CLC ENTRYWAY			
NORTH-END EXISTING CONDITIONS AND DEMOLITION PLAN			
SCALE: 1"=30'	SHEET NO. XX OF XX SHEETS	STA. N/A	TO STA. N/A

F.A. RTE. N/A	SECTION 08-00061-00-RS	COUNTY COOK	TOTAL SHEETS 28	SHEET NO. 7
FED. ROAD DIST. NO. ILLINOIS		FED. AID PROJECT		
CONTRACT NO. 63449				



DRAINAGE STRUCTURE SCHEDULE

STRUCTURE NUMBER	STATION	OFFSET	LT/RT	TYPE	LID/FRAME AND GRATE TYPE	RIM ELEVATION	INVERT ELEVATION	INVERT ELEVATION
9	101+21.50	16.0	RT	CB, TYPE A, 4' DIA.	TY 8 G	633.0	N 629.50	
10	101+85.80	20.0	RT	CB, TYPE A, 4' DIA.	TY 8 G	632.5	S 628.89 N 628.89	
11	102+46.48	16.0	RT	CB, TYPE A, 4' DIA.	TY 8 G	632.2	S 628.27 E 628.27	
12	102+46.48	79.5	RT	MH, TYPE A, 4' DIA.	TY 8 G	630.8	W 627.32 E 622.61	
13	102+46.48	120.0	RT	PRC FES 12"	---	---		622.00

DRAINAGE PIPE SCHEDULE

PIPE NUMBER	DIAMETER	LENGTH (LF)	PIPE SLOPE (%)	TYPE
8	12"	61.5	1.00%	PIPE UNDERDRAIN 12"
9	12"	61.5	1.00%	PIPE UNDERDRAIN 12"
10	12"	63.5	1.50%	PIPE UNDERDRAIN 12"
11	12"	40.5	1.50%	RCCP, CLASS A, TYPE 2

SOUTH-END GRADING AND DRAINAGE PLAN NOTES

- STONE REMOVED FROM THE EXISTING NORTH-END PARKING LOT WILL BE DISPOSED AT THIS LOCATION. STONE WILL BE PLACED ON EXISTING GRAVEL ROAD TO A MAXIMUM THICKNESS OF 8 INCHES AS DIRECTED BY THE ENGINEER. SEE SECTION A-A.
- FINAL GRADING FOR THE SOUTH-END FACILITY WILL FOLLOW SECTION 212 IN THE STANDARD SPECIFICATIONS.

LEGEND

- X DRAINAGE STRUCTURE
- X PIPE

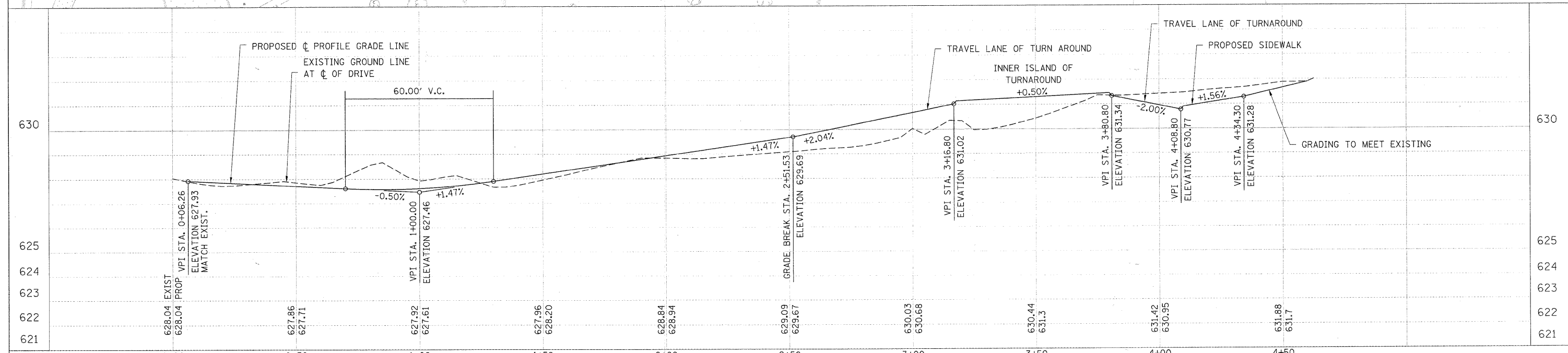
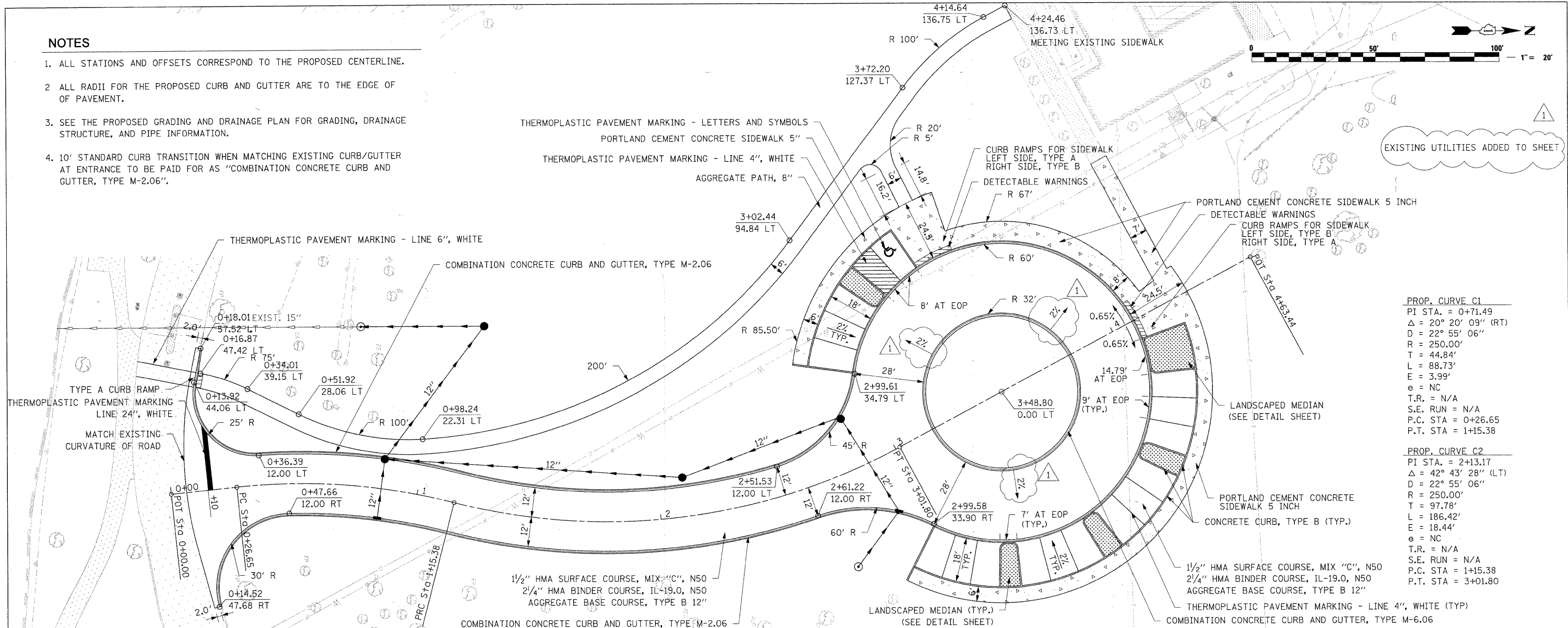


NOTES

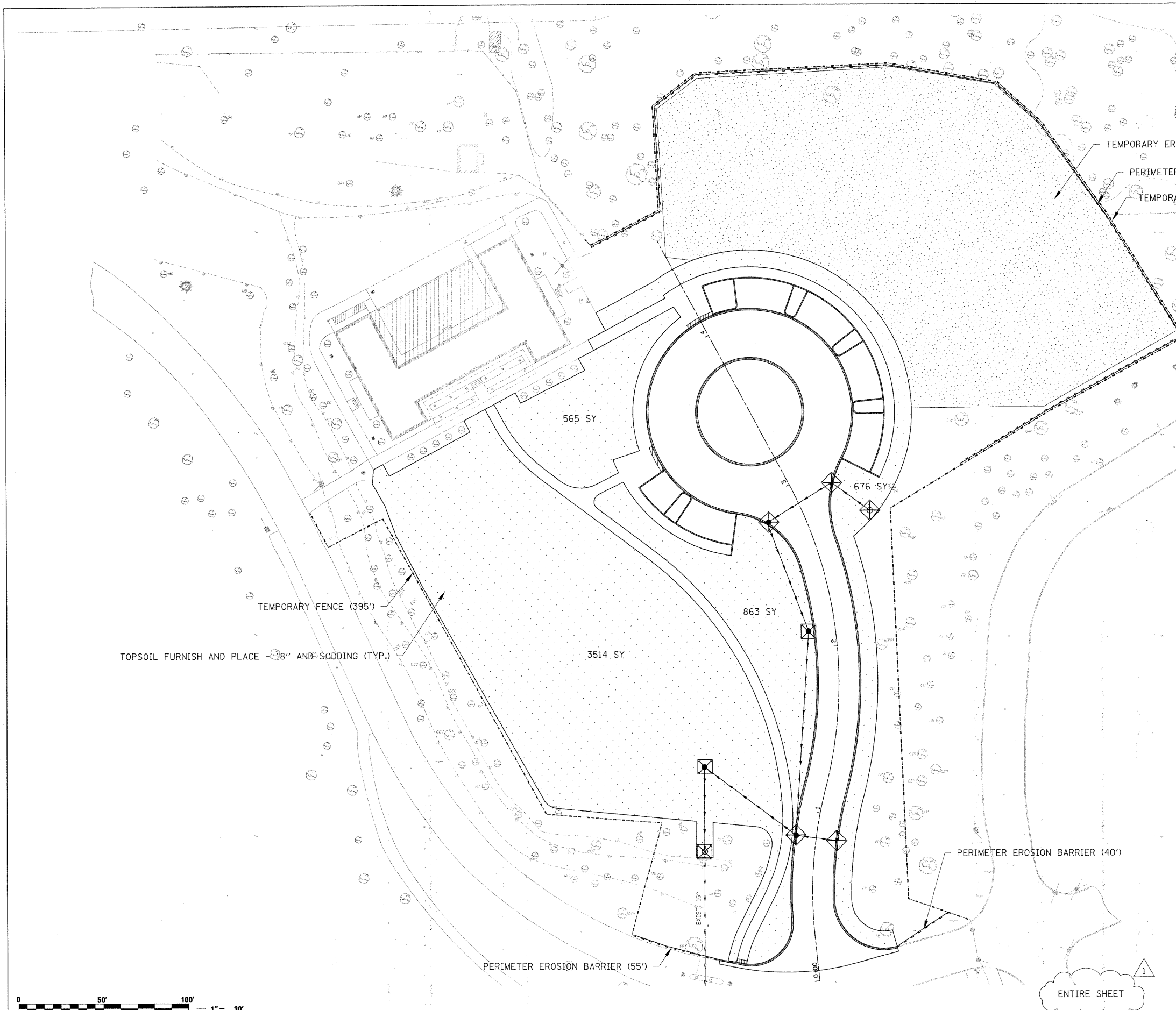
1. ALL STATIONS AND OFFSETS CORRESPOND TO THE PROPOSED CENTERLINE.
2. ALL RADII FOR THE PROPOSED CURB AND GUTTER ARE TO THE EDGE OF OF PAVEMENT.
3. SEE THE PROPOSED GRADING AND DRAINAGE PLAN FOR GRADING, DRAINAGE STRUCTURE, AND PIPE INFORMATION.
4. 10' STANDARD CURB TRANSITION WHEN MATCHING EXISTING CURB/GUTTER AT ENTRANCE TO BE PAID FOR AS "COMBINATION CONCRETE CURB AND GUTTER, TYPE M-2.06".

DATE	BY	REVISIONS

DATE	BY	REVISIONS



FILE NAME = 49105_sht_planprofile-alc.dgn	USER NAME = lsupencheck	DESIGNED - LLS	REVISED - 03/24/2010 ADD. NO. 1	STATE OF ILLINOIS DEPARTMENT OF TRANSPORTATION		CHICAGO BOTANIC GARDEN - CLC ENTRYWAY		F.A. RTE. = N/A	SECTION = 08-00061-00-RS	COUNTY = COOK	TOTAL SHEETS = 28	SHEET NO. = 9
DESIGNED BY = HNTB	PLOT DATE = 24-MAR-2010	CHECKED - KJK	REVISED -			SCALE: H: 1"=20'	SHEET NO. 1 OF 1 SHEETS	STA. 0+00.00 TO STA. 4+63.44	FED. ROAD DIST. NO. = ILLINOIS FED. AID PROJECT	CONTRACT NO. 63449		



NOTES

1. PERIMETER EROSION BARRIER AS SHOWN SHALL BE ERECTED BEFORE WORK BEGINS. THE ENGINEER SHALL HAVE FINAL DETERMINATION OF THE PLACEMENT AND LOCATION OF THE PERIMETER EROSION BARRIER.
2. EXACT LOCATION OF THE CONSTRUCTION FENCE WILL BE DETERMINED IN THE FIELD AS DIRECTED BY THE ENGINEER TO BE PAID FOR AS "TEMPORARY FENCE".
3. CONTRACTOR TO COORDINATE WITH ADJACENT GROWING GARDEN PROJECT FOR TEMPORARY SEEDING AREAS. EXACT LOCATION OF SEEDING AREA WILL BE DETERMINED IN THE FIELD AS DIRECTED BY THE ENGINEER.
4. SEE PROPOSED GRADING AND DRAINAGE PLAN FOR GRADING INFORMATION.
5. REMOVE INLET FILTERS UPON COMPLETION OF THE SODDING CONSTRUCTION. REMOVE DRAINAGE STRUCTURE INLET FILTER WITHIN PROPOSED PAVEMENT AREA FOLLOWING PLACEMENT OF FINAL SURFACE COURSE OR AS DIRECTED BY THE ENGINEER.

EROSION CONTROL AND SEDIMENTATION PLAN LEGEND

- PERIMETER EROSION BARRIER (SEE NOTE 1)
- - - - - TEMPORARY FENCE (SEE NOTE 2)
- ⊗ INLET FILTERS (SEE NOTE 5)
- ▨ TOPSOIL FURNISH AND PLACE - 18", SODDING, NITROGEN, PHOSPHORUS, AND POTASSIUM FERTILIZER NUTRIENTS.
- ▩ TEMPORARY EROSION CONTROL SEEDING (SEE NOTE 3)



ENTIRE SHEET

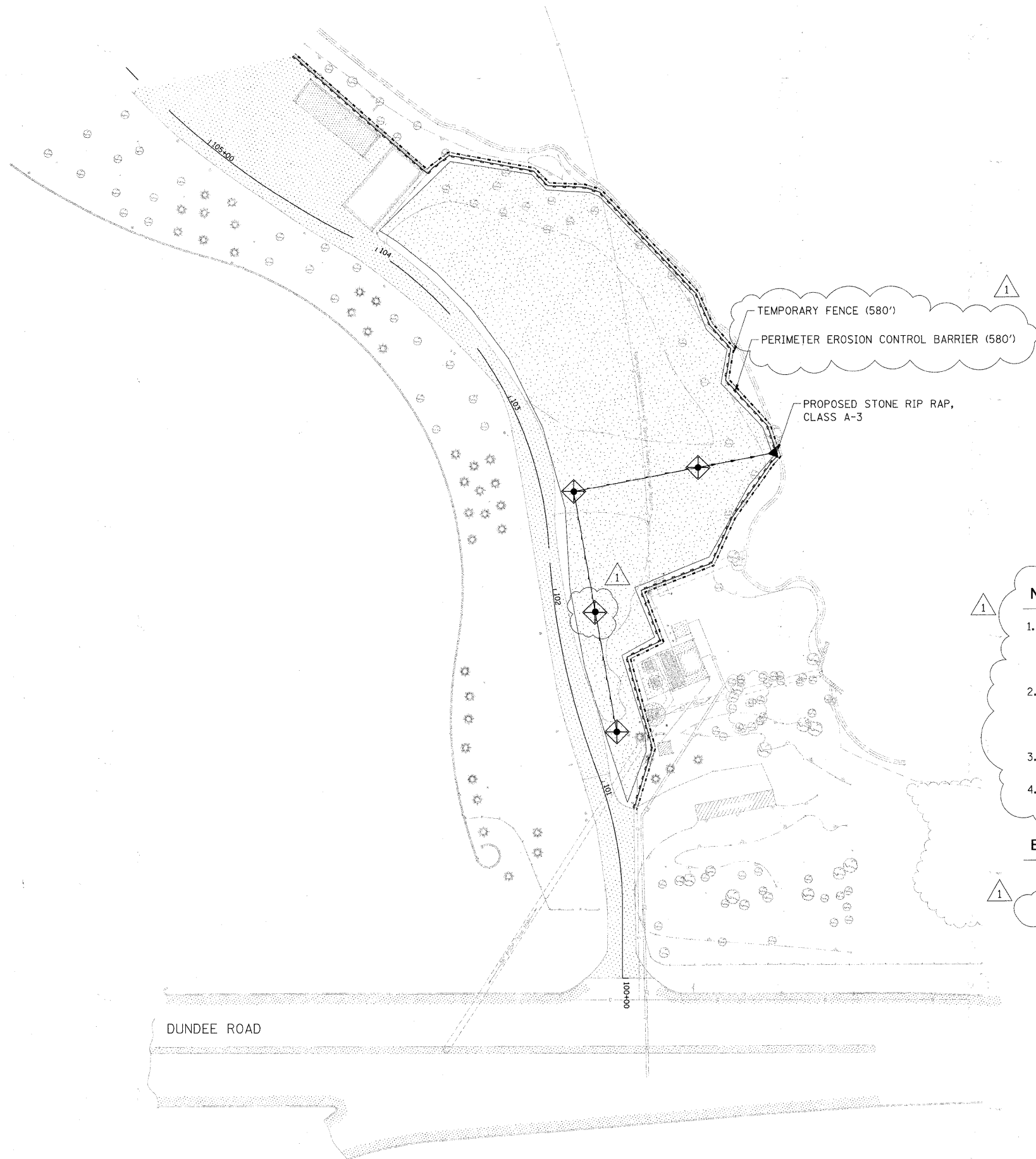
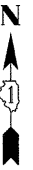
FILE NAME = 49105_sht_erosion-clc.dgn	USER NAME = lsupencheck	DESIGNED - LLS	REVISED - 03/24/2010 ADD. NO. 1
DESIGNED BY HNTB	PLOT DATE = 24-MAR-2010	DRAWN - LLS	REVISED -
		CHECKED - KJK	REVISED -
		DATE - 02/16/2010	REVISED -

**STATE OF ILLINOIS
DEPARTMENT OF TRANSPORTATION**

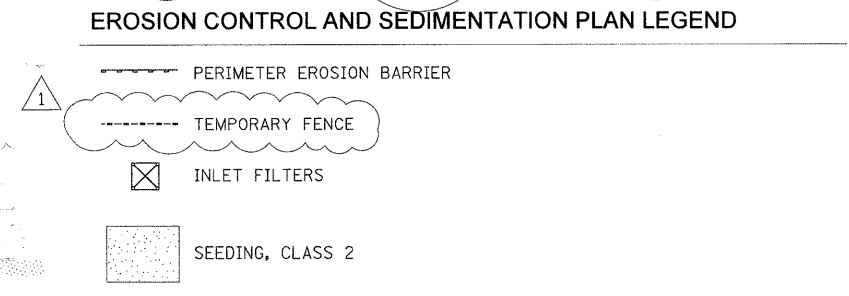
**CHICAGO BOTANIC GARDEN - CLC ENTRYWAY
NORTH-END EROSION AND SEDIMENTATION CONTROL PLAN**

SCALE: 1"=30' SHEET NO. 1 OF 1 SHEETS STA. N/A TO STA. N/A

F.A. RTE.	SECTION	COUNTY	TOTAL SHEETS	SHEET NO.
N/A	08-00061-00-RS	COOK	28	10
FED. ROAD DIST. NO. ILLINOIS FED. AID PROJECT			CONTRACT NO. 63449	



- NOTES**
1. PERIMETER EROSION BARRIER AS SHOWN SHALL BE ERECTED BEFORE WORK BEGINS. THE ENGINEER SHALL HAVE FINAL DETERMINATION OF THE PLACEMENT AND LOCATION OF THE PERIMETER EROSION BARRIER.
 2. EXACT LOCATION OF THE CONSTRUCTION FENCE WILL BE DETERMINED IN THE FIELD AS DIRECTED BY THE ENGINEER TO BE PAID FOR AS "TEMPORARY FENCE".
 3. SEE PROPOSED GRADING AND DRAINAGE PLAN FOR GRADING INFORMATION.
 4. REMOVE INLET FILTER UPON FINAL SHAPING AND GRADING AS DIRECTED BY THE ENGINEER.



FILE NAME = 49105_sht_erosion-mulch.dgn	USER NAME = lsupencheck	DESIGNED - LLS	REVISED 03/24/2010 ADD. NO. 1
DESIGNED BY HNTB	PLLOT DATE = 24-MAR-2010	DRAWN - LLS	REVISED - ---
		CHECKED - KJK	REVISED - ---
		DATE - 02/16/2010	REVISED - ---

**STATE OF ILLINOIS
DEPARTMENT OF TRANSPORTATION**

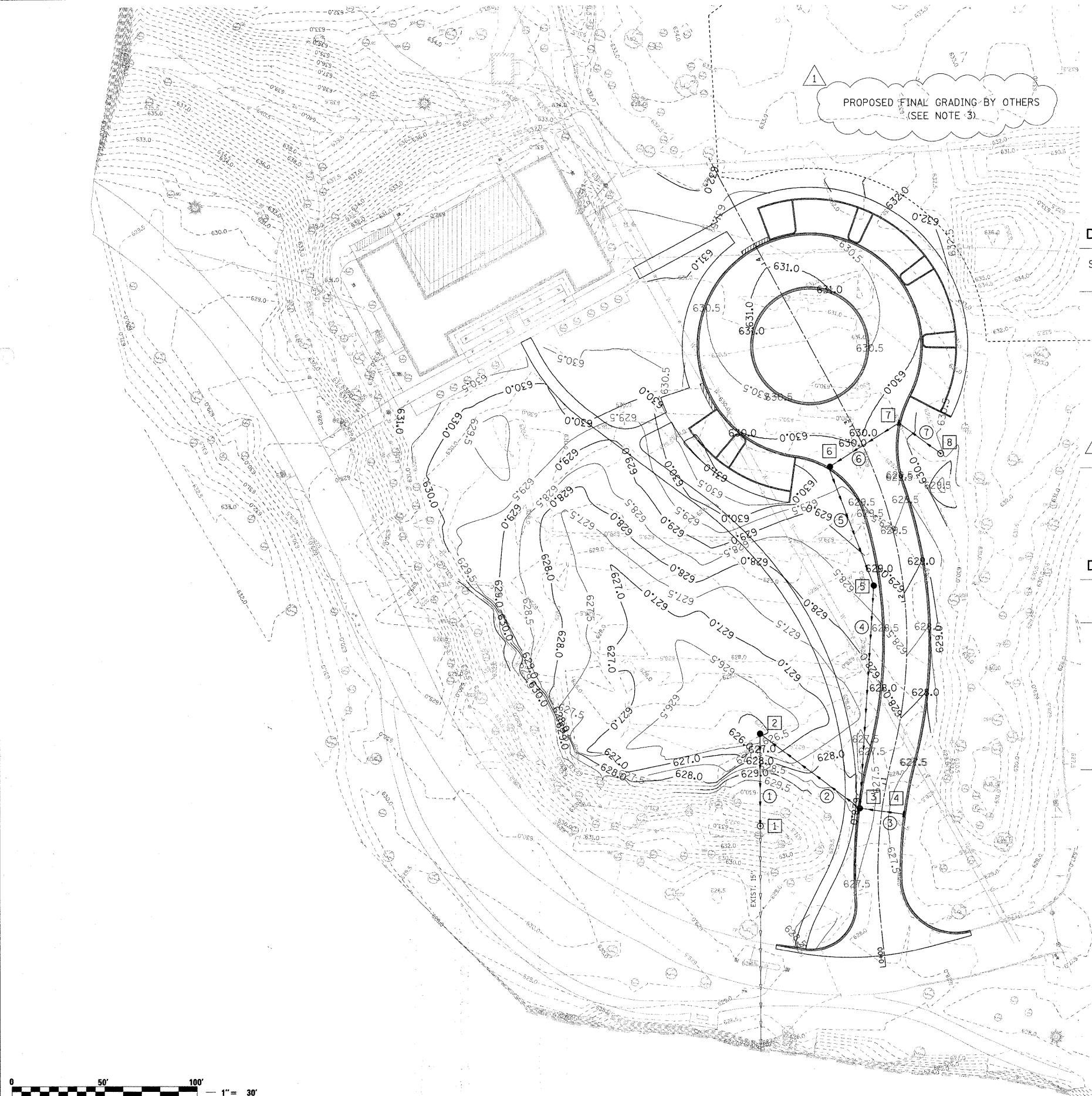
**CHICAGO BOTANIC GARDEN - CLC ENTRYWAY
SOUTH-END EROSION AND SEDIMENTATION CONTROL PLAN**

SCALE: 1"=30' SHEET NO. 1 OF 1 SHEETS STA. N/A TO STA. N/A

F.A. RTE.	SECTION	COUNTY	TOTAL SHEETS	SHEET NO.
N/A	08-00061-00-RS	COOK	28	11
FED. ROAD DIST. NO. - ILLINOIS FED. AID PROJECT			CONTRACT NO. 63449	



PROPOSED FINAL GRADING BY OTHERS
(SEE NOTE 3)



DRAINAGE STRUCTURE SCHEDULE

STRUCTURE NUMBER	STATION	OFFSET	LT/RT	TYPE	LID/FRAME AND GRATE TYPE	RIM ELEVATION	INVERT ELEVATION
1	0+72.08	64.6	LT	MH, TYPE A, 4' DIA.	T1 F, CL	632.3	623.33
2	1+10.88	72.5	LT	CB, TYPE A, 4' DIA.	TY 8 G	626.0	623.50
3	0+85.22	12.0	LT	CB, TYPE A, 4' DIA.	T15 F & L	627.34	623.84
4	0+85.22	12.0	RT	IN, TYPE A	T15 F & L	627.34	623.96
5	2+10.75	15.8	LT	CB, TYPE A, 4' DIA.	TY 8 G	628.8	624.45
6	2+84.80	21.7	LT	CB, TYPE A, 4' DIA.	T15 F & L	629.66	624.79
7	2+90.27	22.9	RT	IN, TYPE A	T15 F & L	629.68	625.02
8	2+68.74	37.1	RT	MH, TYPE A, 4' DIA.	T1 F, CL	630.2	625.16

STATIONS, OFFSETS, AND RIM ELEVATIONS FOR ALL INLETS AND CATCH BASINS LOCATED IN CURB AND GUTTER ARE GIVEN AT THE EDGE OF PAVEMENT.

DRAINAGE PIPE SCHEDULE

PIPE NUMBER	DIAMETER	LENGTH (LF)	PIPE SLOPE (%)	TYPE
1	15"	50	0.34%	RCCP, CLASS A, TYPE 2
2	12"	68	0.50%	RCCP, CLASS A, TYPE 2
3	12"	24	0.50%	RCCP, CLASS A, TYPE 2
4	12"	121	0.50%	STORM SEWER, DUCTILE IRON, TYPE 1
5	12"	69	0.50%	RCCP, CLASS A, TYPE 2
6	12"	45	0.50%	RCCP, CLASS A, TYPE 2
7	12"	28	0.50%	RCCP, CLASS A, TYPE 2

LEGEND

- DRAINAGE STRUCTURE
- PIPE

GRADING AND DRAINAGE PLAN NOTES

1. SEE THE NORTH-END PLAN AND PROFILE SHEET FOR TURNAROUND AND DRIVE GEOMETRICS.
2. SEE THE NORTH-END EROSION AND SEDIMENTATION CONTROL PLAN SHEET FOR ALL EROSION CONTROL ACTIVITIES.
3. FINAL GRADING FOR THE ADJACENT GROWING GARDEN PROJECT WILL BE DONE BY OTHERS.
4. SEE TRAFFIC CONTROL PLAN FOR TRAFFIC CONTROL NOTES.



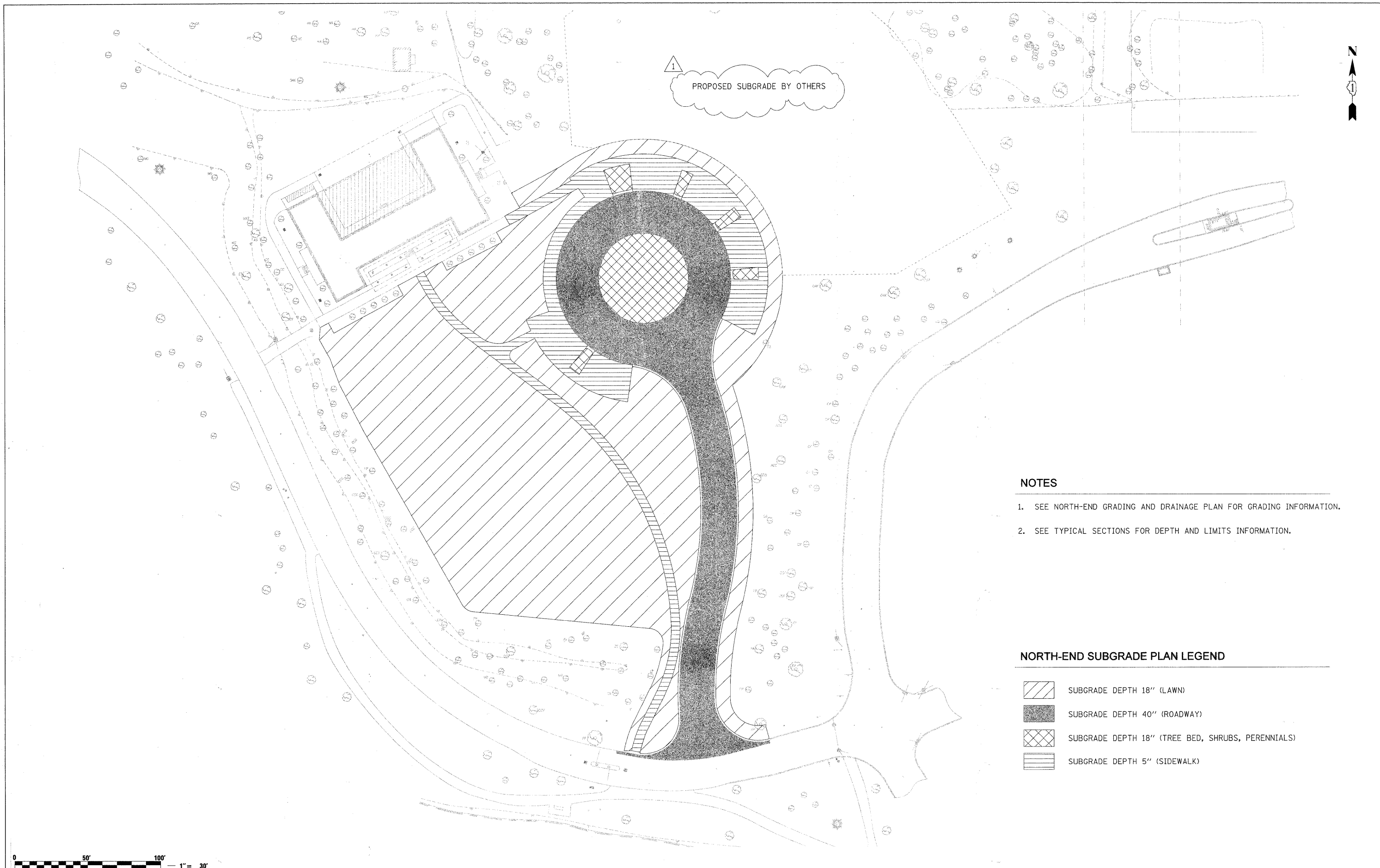
FILE NAME = 49105_sht_grading-clc.dgn	USER NAME = lsupencheck	DESIGNED - LLS	REVISED - 03/24/2010 ADD. NO. 1
DESIGNED BY HNTB	PLOT DATE = 24-MAR-2010	DRAWN - LLS	REVISED -
		CHECKED - KJK	REVISED -
		DATE - 02/16/2010	REVISED -

STATE OF ILLINOIS
DEPARTMENT OF TRANSPORTATION

CHICAGO BOTANIC GARDEN - CLC ENTRYWAY
NORTH-END GRADING AND DRAINAGE PLAN

SCALE: 1"=30' SHEET NO. 1 OF 1 SHEETS STA. N/A TO STA. N/A

F.A. RTE. N/A	SECTION 08-00061-00-R5	COUNTY COOK	TOTAL SHEETS 28	SHEET NO. 12
CONTRACT NO. 63449				
FED. ROAD DIST. NO. ILLINOIS FED. AID PROJECT				



1
PROPOSED SUBGRADE BY OTHERS



NOTES

1. SEE NORTH-END GRADING AND DRAINAGE PLAN FOR GRADING INFORMATION.
2. SEE TYPICAL SECTIONS FOR DEPTH AND LIMITS INFORMATION.

NORTH-END SUBGRADE PLAN LEGEND

- SUBGRADE DEPTH 18" (LAWN)
- SUBGRADE DEPTH 40" (ROADWAY)
- SUBGRADE DEPTH 18" (TREE BED, SHRUBS, PERENNIALS)
- SUBGRADE DEPTH 5" (SIDEWALK)

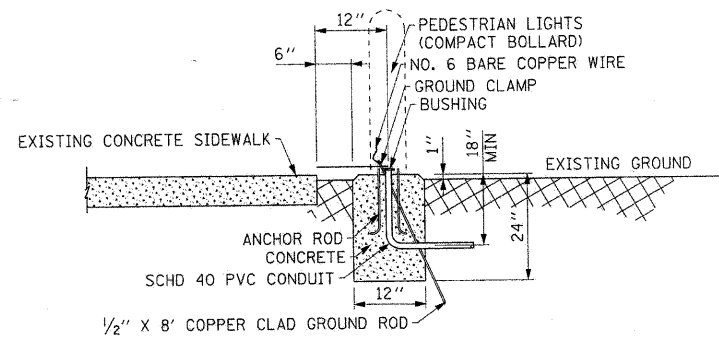
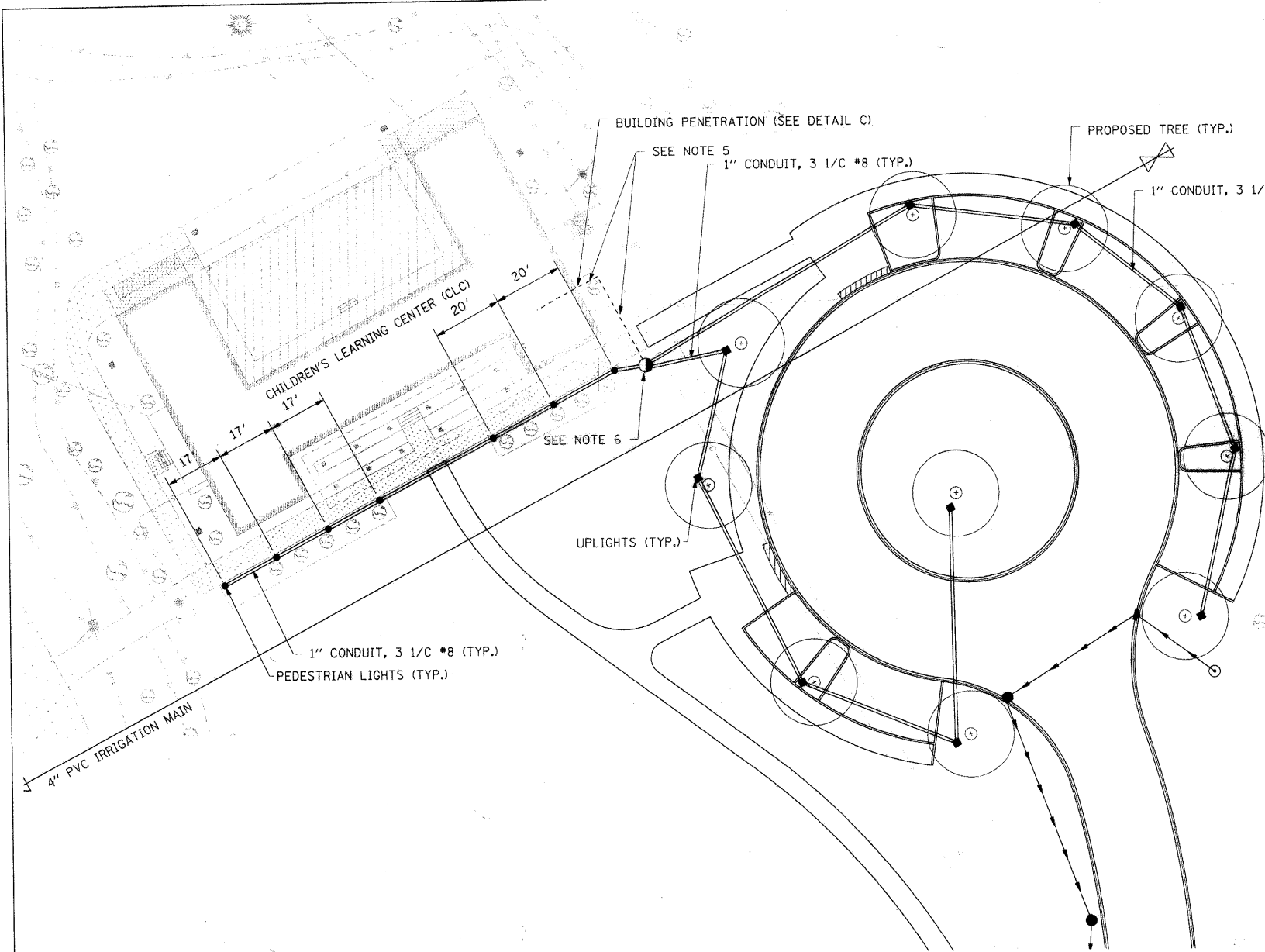


FILE NAME = 49105_sh1_subgrade-clc.dgn	USER NAME = lsupencheck	DESIGNED - LLS	REVISED 03/24/2010 ADD. NO. 1
DESIGNED BY HNTB	PLOT DATE = 24-MAR-2010	DRAWN - LLS	REVISED - ---
		CHECKED - KJK	REVISED - ---
		DATE - 02/16/2010	REVISED - ---

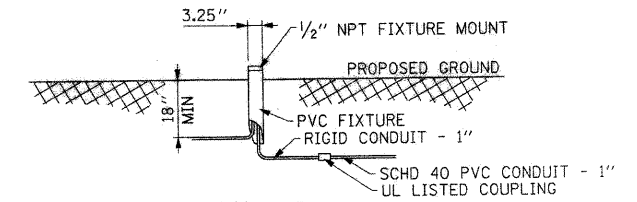
**STATE OF ILLINOIS
DEPARTMENT OF TRANSPORTATION**

CHICAGO BOTANIC GARDEN - CLC ENTRYWAY			
NORTH-END SUBGRADE PLAN			
SCALE: 1"=30'	SHEET NO. 1	OF 1 SHEETS	STA. N/A TO STA. N/A

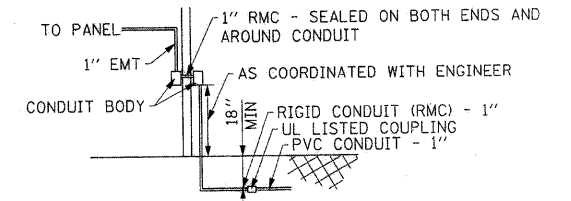
F.A. RTE. N/A	SECTION 08-00061-00-RS	COUNTY COOK	TOTAL SHEETS 28	SHEET NO. 13
FED. ROAD DIST. NO. ILLINOIS		FED. AID PROJECT CONTRACT NO. 63449		



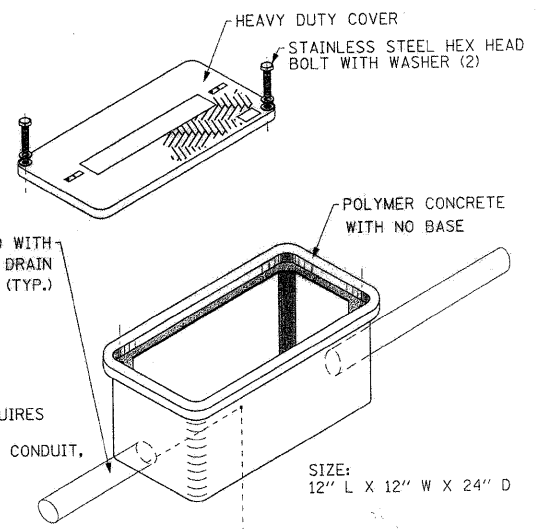
DETAIL A
CONCRETE FOUNDATION DETAIL
PEDESTRIAN LIGHTS (COMPACT BOLLARD)



DETAIL B
MOUNTING DETAIL
UPLIGHTS (TREE ACCENT LIGHT)



DETAIL C
BUILDING PENETRATION DETAIL



DETAIL D
HANDHOLE DETAIL

NOTES

1. THE PROPOSED ELECTRICAL LAYOUT TO BE STAKED BY CONTRACTOR AND APPROVED BY ENGINEER PRIOR TO INSTALLATION.
2. EXISTING UTILITIES SHOWN ARE APPROXIMATE. CONTRACTOR TO VERIFY.
3. SEE THE NORTH-END IRRIGATION PLAN FOR IRRIGATION LAYOUT AND DETAILS.
4. SEE THE NORTH-END LANDSCAPE PLAN FOR PROPOSED LANDSCAPE DESIGN.
5. CONTRACTOR TO FURNISH/INSTALL ONE (1) 120V, 20A SINGLE POLE BREAKER IN EXISTING DISTRIBUTION PANEL. ROUTE OF CABLE AND CONDUIT INSIDE BUILDING AND OUT TO HANDHOLE TO BE DETERMINED IN THE FIELD AND APPROVED BY THE ENGINEER.
6. CONTRACTOR TO FURNISH/INSTALL HANDHOLE AND SPLICE CONDUCTORS FOR UPLIGHTS AND PEDESTRIAN LIGHTS INSIDE THE HANDHOLE.
7. ENGINEER TO DETERMINE LOCATION OF HONEYWELL CONTROLLER WITHIN THE CLC BUILDING. CONTROLLER WILL NEED LOCAL POWER. CONNECTION TO EXISTING HONEYWELL EQUIPMENT WILL BE BY OTHERS.

ADDED SHEET

ELECTRICAL PLAN LEGEND

- PEDESTRIAN LIGHTS (SEE DETAIL A FOR BASE)
- ◆ UPLIGHTS (SEE DETAIL B FOR MOUNTING)
- HANDHOLE (SEE DETAIL D)
- CONDUIT IN TRENCH, 1" DIAMETER, SCHD 40 PVC - 3 1/2 #8
- SEE NOTE 5



NOTES:

1. ANY HANDHOLE PENETRATED WITH METALLIC CONDUIT REQUIRES A GROUND ROD (COPPER CLAD STEEL), INSULATED, XHHW #2 GROUND, UL LISTED GROUNDING BUSHING ON METALLIC CONDUIT, AND AN EXOTHERMIC WELD TO THE GROUND ROD.
2. ALL PVC CONDUIT SHALL HAVE NON-GROUNDED INSULATED BUSHINGS.



FILE NAME = 49105_sht_electr\clc-clc.dgn	USER NAME = lsupencheck	DESIGNED - RAJ	REVISED - 03/24/2010 ADD. NO. 1
DESIGNED BY HNTB	PLOT DATE = 24-MAR-2010	DRAWN - LLS	REVISED -
		CHECKED - MCD	REVISED -
		DATE - 03/19/2010	REVISED -

**STATE OF ILLINOIS
DEPARTMENT OF TRANSPORTATION**

CHICAGO BOTANIC GARDEN - CLC ENTRYWAY			
NORTH-END ELECTRICAL PLAN			
SCALE: 1" = 20'	SHEET NO. 1 OF 1 SHEETS	STA. N/A	TO STA. N/A

F.A. RTE. N/A	SECTION 08-00061-00-RS	COUNTY COOK	TOTAL SHEETS 28	SHEET NO. 16A
FED. ROAD DIST. NO. - [ILLINOIS] FED. AID PROJECT			CONTRACT NO. 63449	