

STATE OF ILLINOIS
DEPARTMENT OF TRANSPORTATION
DIVISION OF HIGHWAYS

**PROPOSED
HIGHWAY PLANS**

FAP ROUTE 517 (US BR 20)
SECTION (1-2)M & TS
PROJECT ACHSIP-0517(057)
BOONE COUNTY

C-92-026-10
R 3E

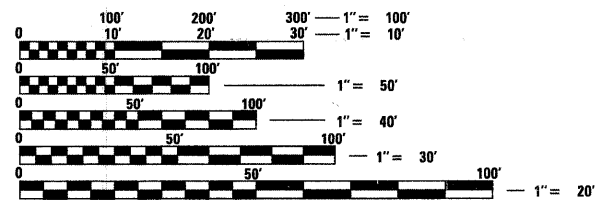
SECTION BEGINS
STA 261+21.5

SECTION ENDS
STA 302+29.6

FOR INDEX OF SHEETS, SEE SHEET NO. 2
FOR LIST OF STATE STANDARDS, SEE SHEET NO. 2

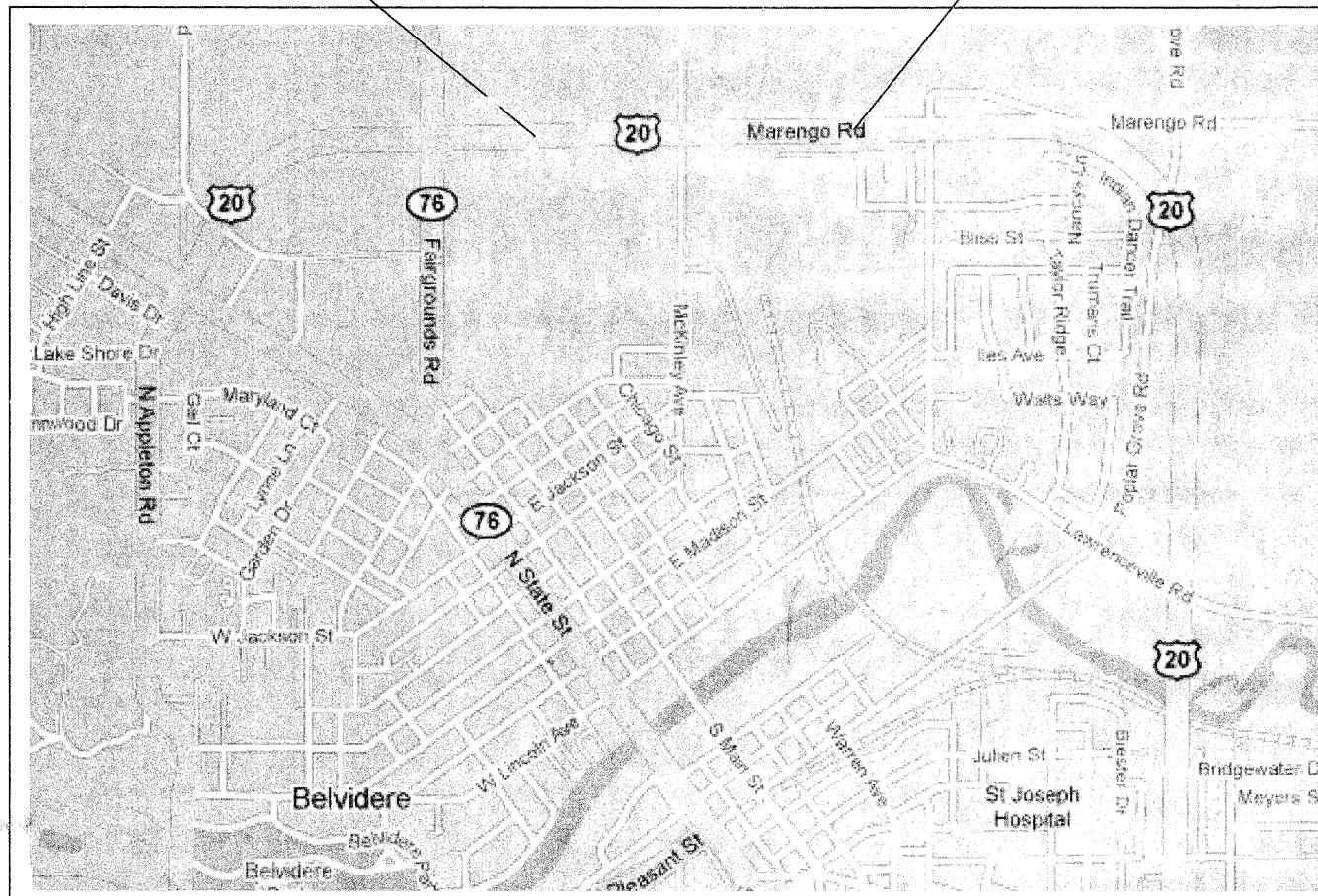
BELVIDERE TOWNSHIP SECTIONS, 23 & 24

T 44N



FULL SIZE PLANS HAVE BEEN PREPARED USING STANDARD ENGINEERING SCALES. REDUCED SIZED PLANS WILL NOT CONFORM TO STANDARD SCALES. IN MAKING MEASUREMENTS ON REDUCED PLANS, THE ABOVE SCALES MAY BE USED.

J.U.L.I.E.
JOINT UTILITY LOCATION INFORMATION FOR EXCAVATION
1-800-892-0123
OR 811



PROJECT ENGINEER: MASOOD AHMAD
SENIOR SQUAD LEADER: SAM ABDULLAH (815) 284-5935
SQUAD LEADER: DAVID DOSS (815) 284-5516
CONTRACT NO. 64A09

GROSS LENGTH = 4108.10 FT. = 0.78 MILE
NET LENGTH = 4108.10 FT. = 0.78 MILE

F.A.P. RTE.	SECTION	COUNTY	TOTAL SHEETS	SHEET NO.
517	(1-2)M & TS	BOONE	74	1
		ILLINOIS	CONTRACT NO. 64A09	

D-92-057-04



STATE OF ILLINOIS
DEPARTMENT OF TRANSPORTATION
DIVISION OF HIGHWAYS

SUBMITTED Jan. 21, 2010

John F. Ryan
DEPUTY DIRECTOR OF HIGHWAYS, REGION ENGINEER

March 19, 2010

Scott E. Stitt P.E. / RD
Acting ENGINEER OF DESIGN AND ENVIRONMENT

March 19, 2010

Christine M. Reed / RD
DIRECTOR OF HIGHWAYS, CHIEF ENGINEER

**PRINTED BY THE AUTHORITY
OF THE STATE OF ILLINOIS**