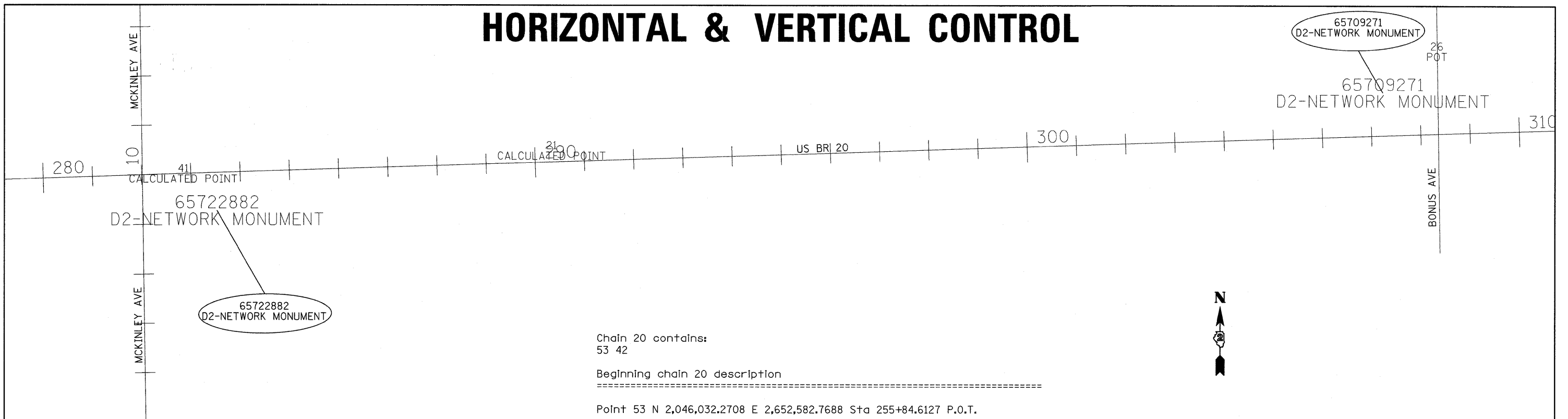


HORIZONTAL & VERTICAL CONTROL



SURVEY WORK POINTS

| POINT | NORTH | EAST | ELEVATION | CHAIN | STATION | OFFSET | DESCRIPTION |
|-------|--------------|--------------|-----------|-------|-------------|--------------|-------------------------|
| 100 | 2046194.3430 | 2658129.7300 | 788.2670 | 20 | 311+33.9177 | 16.1234' RT | TOPO SURVEY POINT, NAIL |
| 101 | 2045955.5180 | 2657858.6020 | 786.4660 | 20 | 308+55.2609 | 246.1194' RT | TOPO SURVEY POINT, PIN |
| 105 | 2046049.1040 | 2655179.6740 | 785.7540 | 20 | 281+80.7193 | 66.5617' RT | TOPO SURVEY POINT, NAIL |
| 106 | 2046057.4970 | 2654429.6790 | 781.8850 | 20 | 274+31.3806 | 34.0908' RT | TOPO SURVEY POINT, NAIL |
| 107 | 2046101.1830 | 2653417.9710 | 785.2790 | 20 | 264+21.5970 | 42.0584' LT | TOPO SURVEY POINT, NAIL |
| 127 | 2046153.9410 | 2655280.6290 | 786.8310 | 20 | 282+84.9886 | 34.9796' LT | PAVEMENT - EDGE |
| 128 | 2046129.9700 | 2655280.6470 | 786.7430 | 20 | 282+84.2368 | 11.0204' LT | PAVEMENT - EDGE |
| 131 | 2046154.0940 | 2656029.7450 | 787.6690 | 20 | 290+33.7232 | 11.0785' LT | PAVEMENT - EDGE |
| 132 | 2046177.9460 | 2656029.3740 | 787.7600 | 20 | 290+34.1183 | 34.9302' LT | PAVEMENT - EDGE |
| 150 | 2046242.3420 | 2658778.6440 | 787.5620 | 20 | 317+84.0383 | 11.0143' LT | PAVEMENT - EDGE |
| 151 | 2046266.3000 | 2658777.8450 | 787.7680 | 20 | 317+84.0090 | 34.9857' LT | PAVEMENT - EDGE |

BENCH MARKS

| POINT | NORTH | EAST | ELEVATION | CHAIN | STATION | OFFSET | DESCRIPTION |
|-------|--------------|--------------|-----------|-------|-------------|--------------|-----------------------------|
| 400 | 2046111.5550 | 2657876.1980 | 787.5190 | 20 | 308+77.8581 | 90.7278' RT | FIRE HYDRANT, BOLT |
| 401 | 2045831.8870 | 2658046.4830 | 785.4390 | 20 | 310+39.0752 | 375.7194' RT | FOUNDATION, CHISELED SQUARE |
| 402 | 2046263.6640 | 2656642.5940 | 786.5670 | 20 | 296+49.7744 | 100.9136' LT | POWER POLE, BOLT |

APPARENT PROPERTY CORNERS

| POINT | NORTH | EAST | ELEVATION | CHAIN | STATION | OFFSET | DESCRIPTION |
|-------|--------------|--------------|-----------|-------|-------------|--------------|----------------------|
| 700 | 2046103.6300 | 2657766.8500 | 787.5680 | 20 | 307+68.3121 | 95.1376' RT | PROPERTY CORNER, PIN |
| 701 | 2046289.7170 | 2657877.9590 | 787.5030 | 20 | 308+85.3390 | 87.2858' LT | PROPERTY CORNER, PIN |
| 702 | 2045963.5970 | 2657801.9680 | 785.5560 | 20 | 307+98.9155 | 236.226' RT | PROPERTY CORNER, PIN |
| 703 | 2046254.1310 | 2657830.2720 | 788.2040 | 20 | 308+36.5339 | 53.2493' LT | SECTION CORNER, NAIL |
| 704 | 2045964.1000 | 2657834.9400 | 786.0810 | 20 | 308+31.8867 | 236.782' RT | SECTION CORNER, NAIL |
| 705 | 2046283.2340 | 2657706.5500 | 785.4840 | 20 | 307+13.8102 | 86.31' LT | PROPERTY CORNER, PIN |
| 706 | 2046066.6830 | 2656017.4100 | 783.2250 | 20 | 290+18.5878 | 75.8913' RT | PROPERTY CORNER, PIN |
| 707 | 2046076.9660 | 2657900.5600 | 784.2880 | 20 | 309+01.0969 | 126.0812' RT | PROPERTY CORNER, PIN |
| 708 | 2046115.8020 | 2657956.9290 | 784.2590 | 20 | 309+58.6839 | 89.0753' RT | PROPERTY CORNER, PIN |
| 709 | 2046297.6060 | 2658113.3680 | 784.8540 | 20 | 311+20.8799 | 87.6118' LT | PROPERTY CORNER, PIN |
| 710 | 2046309.6760 | 2658370.8750 | 784.3540 | 20 | 313+78.6417 | 91.407' LT | PROPERTY CORNER, PIN |
| 713 | 2046033.3840 | 2655273.4710 | 783.1730 | 20 | 282+73.9632 | 85.2854' RT | PROPERTY CORNER, PIN |
| 714 | 2046167.7950 | 2655191.0410 | 786.6950 | 20 | 281+95.8916 | 51.7031' LT | SECTION CORNER, PIN |
| 720 | 2046016.8780 | 2655255.1620 | 784.2090 | 20 | 282+55.1336 | 101.195' RT | PROPERTY CORNER, PIN |
| 721 | 2045916.5420 | 2655232.8250 | 784.5910 | 20 | 282+29.5864 | 200.762' RT | PROPERTY CORNER, PIN |
| 722 | 2046067.5270 | 2656017.1770 | 783.2070 | 20 | 290+18.3820 | 75.0403' RT | PROPERTY CORNER, PIN |
| 723 | 2046076.0860 | 2656282.4910 | 783.1840 | 20 | 292+83.8340 | 75.0049' RT | PROPERTY CORNER, PIN |
| 724 | 2046331.4850 | 2657859.1960 | 787.2770 | 20 | 308+67.9268 | 129.6347' LT | PROPERTY CORNER, PIN |
| 725 | 2046283.2010 | 2657706.5470 | 785.4580 | 20 | 307+13.8061 | 86.2771' LT | PROPERTY CORNER, PIN |
| 726 | 2046467.0050 | 2655224.1300 | 782.6620 | 20 | 282+38.5711 | 349.6963' LT | R.O.W. MARKER, BACK |
| 727 | 2045989.0600 | 2653883.2090 | 781.6980 | 20 | 268+82.9948 | 84.9454' RT | PROPERTY CORNER, PIN |