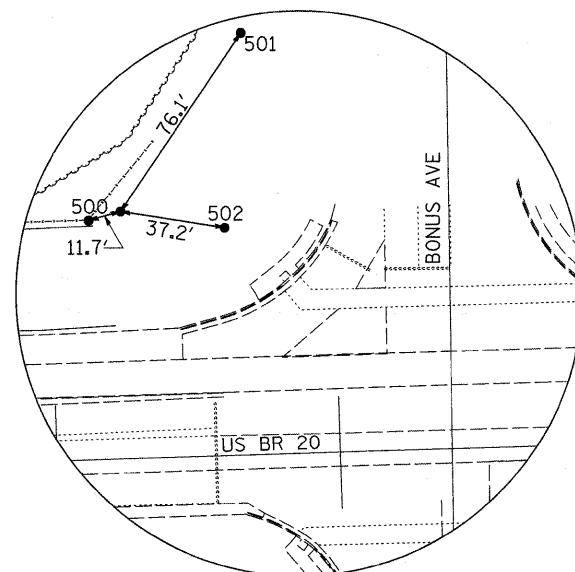


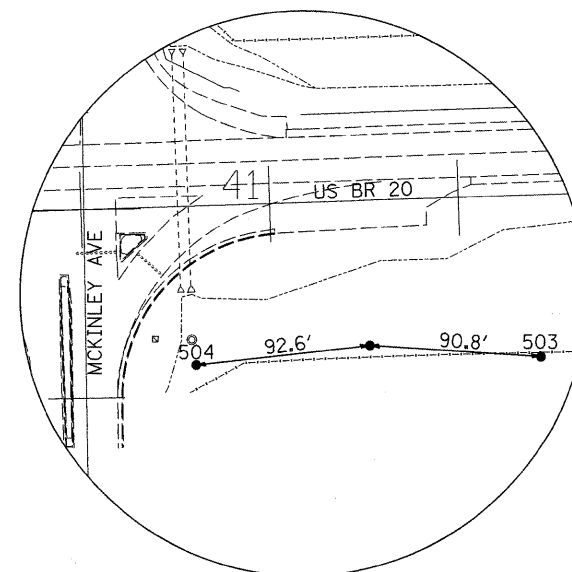
HORIZONTAL & VERTICAL CONTROL

HORIZONTAL CONTROL POINTS							
POINT	NORTH	EAST	ELEVATION	CHAIN	STATION	OFFSET	DESCRIPTION
26	2046369.7140	2657827.8530	787.3340	20	308+37.8275	168.8504' LT	POT, PK NAIL
27	2046129.9910	2655280.4790	786.6990	20	282+84.0696	11.0468' LT	PAVEMENT - EDGE
28	2046154.0030	2655280.3570	786.7850	20	282+84.7187	35.0503' LT	PAVEMENT - EDGE
29	2046152.6300	2655280.6940	786.9780	20	282+85.0114	33.6672' LT	PAVEMENT - EDGE, BEGINNING
30	2046128.7170	2655280.5380	786.9310	20	282+84.0877	9.7715' LT	PAVEMENT - EDGE, END
31	2046153.1400	2656029.8770	787.6220	20	290+33.8245	10.1208' LT	PAVEMENT - EDGE, BEGINNING
32	2046177.1540	2656030.1050	787.7690	20	290+34.8235	34.1151' LT	PAVEMENT - EDGE, END
45	2046090.1870	2654121.5880	785.1680	20	271+24.4981	8.4751' LT	PAVEMENT - EDGE
46	2046117.1250	2654134.2980	785.2610	20	271+38.0665	34.9911' LT	PAVEMENT - EDGE
47	2046086.3780	2653549.8300	786.1070	20	265+52.9126	23.0271' LT	POT, PAINTED
44	2046116.3390	2655198.3090	786.8230	20	282+01.5036	0.0403' LT	PROPERTY CORNER, PERM. SURVEY MARKER
65709271	2046285.0890	2657717.7770	786.5360	20	307+25.0910	87.8036' LT	HORIZONTAL CONTROL STATION, PERM. SURVEY MARKER
65722882	2046044.3690	2655349.9580	782.3030	20	283+50.7635	76.762' RT	HORIZONTAL CONTROL STATION, PERM. SURVEY MARKER

REFERENCE TIES				
POINT	CHAIN	STATION	OFFSET	DESCRIPTION
500	20	307+13.7714	85.0396' LT	FENCE POST, TOP
501	20	307+69.5719	149.5301' LT	FENCE POST, TOP
502	20	307+61.6767	81.0093' LT	SIGN, CORNER
503	20	284+41.1209	85.5169' RT	POWER POLE WITH TRANSFORMER, SHINER
504	20	282+58.4846	83.9637' RT	POWER POLE, SHINER



HORIZONTAL CONTROL
POINT NO. 65709271



HORIZONTAL CONTROL
POINT NO. 65722882