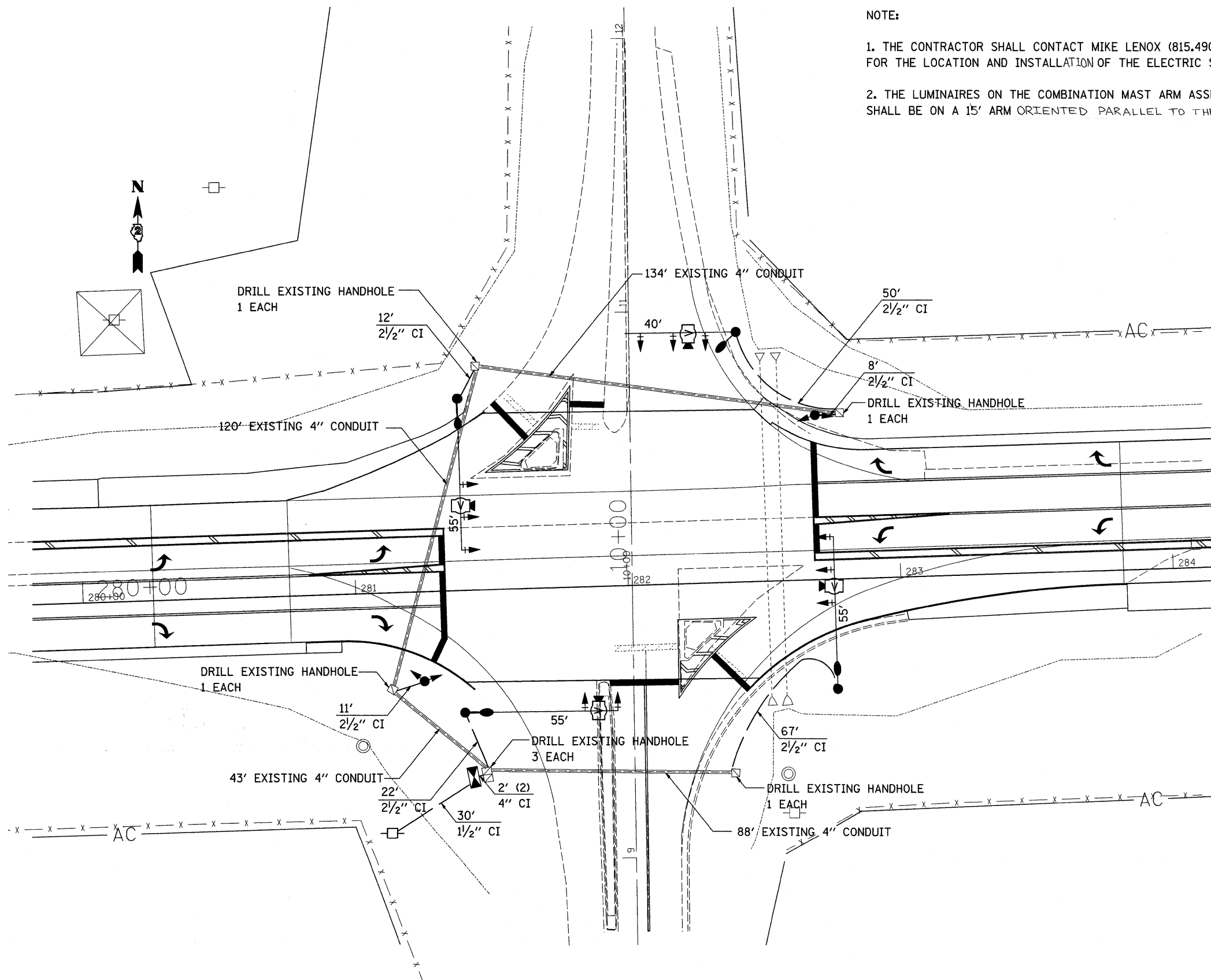


# TRAFFIC SIGNAL PLANS

**NOTE:**

1. THE CONTRACTOR SHALL CONTACT MIKE LENOX (815.490.2869) WITH COM ED FOR THE LOCATION AND INSTALLATION OF THE ELECTRIC SERVICE.
2. THE LUMINAIRES ON THE COMBINATION MAST ARM ASSEMBLIES SHALL BE ON A 15' ARM ORIENTED PARALLEL TO THE TRAFFIC SIGNAL MAST ARM.



**LEGEND**

- EXISTING CONTROLLER
- NEW CONTROLLER
- EXISTING STEEL MAST ARM ASSEMBLY AND POLE
- NEW STEEL COMBINATION MAST ARM ASSEMBLY AND POLE
- EXISTING SIGNAL HEAD AND POST
- NEW SIGNAL HEAD AND POST
- EXISTING SIGNAL HEAD
- NEW SIGNAL HEAD WITH BACKPLATE
- EXISTING HANDHOLE
- NEW HANDHOLE
- NEW JUNCTION BOX
- NEW HEAVY-DUTY HANDHOLE
- NEW DOUBLE HANDHOLE
- EXISTING CONDUIT (LENGTH AND SIZE)
- NEW LUMINAIRE, SODIUM VAPOR, HORIZONTAL MOUNT 250WATT
- CONDUIT INSTALL PUSHED OR TRENCHED
- UPPER NUMERAL INDICATES LENGTH
- LOWER NUMERAL INDICATES SIZE AND (CI) CONDUIT INSTALLED
- VIDEO CAMERA DETECTION

FILE NAME =	USER NAME = dossdd	DESIGNED -	REVISED -	<b>STATE OF ILLINOIS DEPARTMENT OF TRANSPORTATION</b>	<b>US BR 20 TRAFFIC SIGNAL PLANS</b>				F.A.P. RTE.	SECTION	COUNTY	TOTAL SHEETS	SHEET NO.		
ca\pwork\PWIDOT\DOSSDD\dms58898\02205704-sht-ts.dgn		DRAWN -	REVISED -		SCALE:	SHEET NO.	OF	SHEETS	STA.	TO STA.	517	(1-2)M & TS	BOONE	74	45
PLOT SCALE = 20.0000' / IN.		CHECKED -	REVISED -		CONTRACT NO. 64A09										
PLOT DATE = Wed Dec 30 11:22:32 2009		DATE -	REVISED -		ILLINOIS FED. AID PROJECT										