

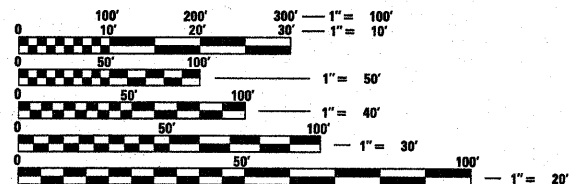
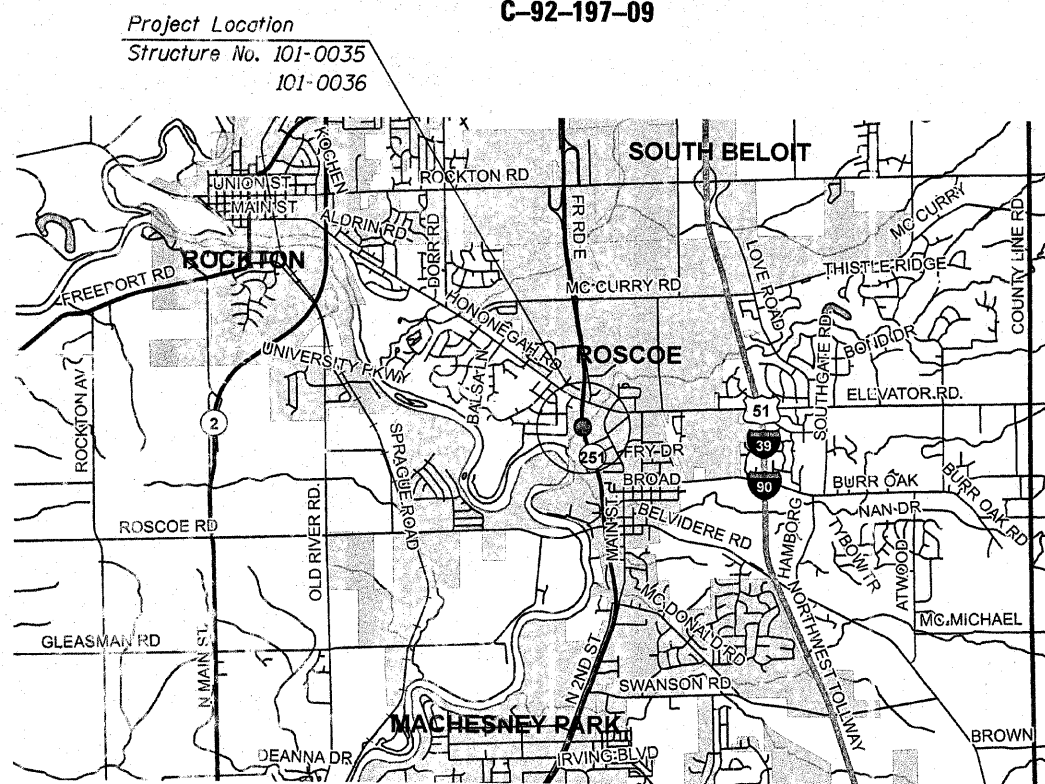
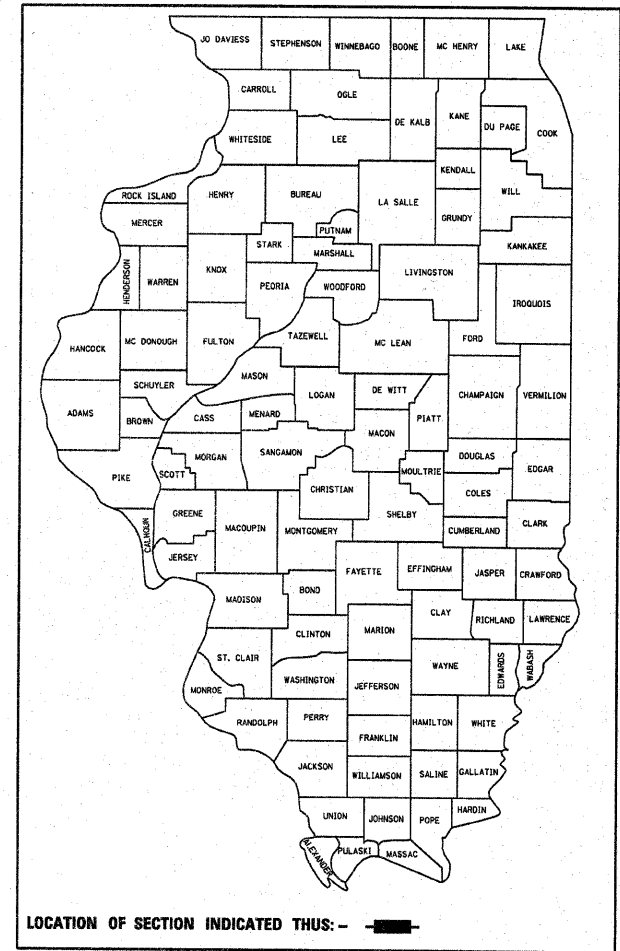
FOR INDEX OF SHEETS

1. Cover Sheet, Index of Sheets
2. Summary of Quantities
3. General Notes
4. Scour countermeasure details
5. Riprap details

STATE OF ILLINOIS
DEPARTMENT OF TRANSPORTATION
DIVISION OF HIGHWAYS
PROPOSED
HIGHWAY PLANS

FAP ROUTE 738 (IL 251)
SECTION (5B-1)M
Bridge Repair Scour Protection
WINNEBAGO COUNTY

F.A.P. RTE.	SECTION	COUNTY	TOTAL SHEETS	SHEET NO.
738	(5B-1)M	Winnebago	5	1
		ILLINOIS	CONTRACT NO. 64F58	



FULL SIZE PLANS HAVE BEEN PREPARED USING STANDARD ENGINEERING SCALES. REDUCED SIZED PLANS WILL NOT CONFORM TO STANDARD SCALES. IN MAKING MEASUREMENTS ON REDUCED PLANS, THE ABOVE SCALES MAY BE USED.

J.U.L.I.E.
 JOINT UTILITY LOCATION INFORMATION FOR EXCAVATION
 1-800-892-0123
 OR 811

PROJECT ENGINEER: Mahmoud Etemadi 815/284-5393

GROSS LENGTH = 163 FT. = 0.031 MILE
 NET LENGTH = 163 FT. = 0.031 MILE

CONTRACT NO. 64F58

STATE OF ILLINOIS
DEPARTMENT OF TRANSPORTATION
DIVISION OF HIGHWAYS

SUBMITTED Oct. 1, 2009
George F. Ryan
 DEPUTY DIRECTOR OF HIGHWAYS, REGION ENGINEER

December 4, 2009
Charles J. Ingersoll
 ENGINEER OF DESIGN AND ENVIRONMENT

December 4, 2009
Christine M. Reed
 DIRECTOR OF HIGHWAYS, CHIEF ENGINEER

PRINTED BY THE AUTHORITY
OF THE STATE OF ILLINOIS

SUMMARY OF QUANTITIES

SFTY-2A
100% STATE
TOTAL

paycode	description	units	quantity
20200100	EARTH EXCAVATION	CU YD	150
20300100	CHANNEL EXCAVATION	CU YD	285
28100207	STONE RIPRAP, ^{CLASS} A4	TON	520
28200200	FILTER FABRIC	SQ YD	260
67100100	MOBILIZATION	L SUM	1
70102630	TRAFFIC CONTROL AND PROTECTION, STANDARD 701601	L SUM	1

GENERAL NOTES

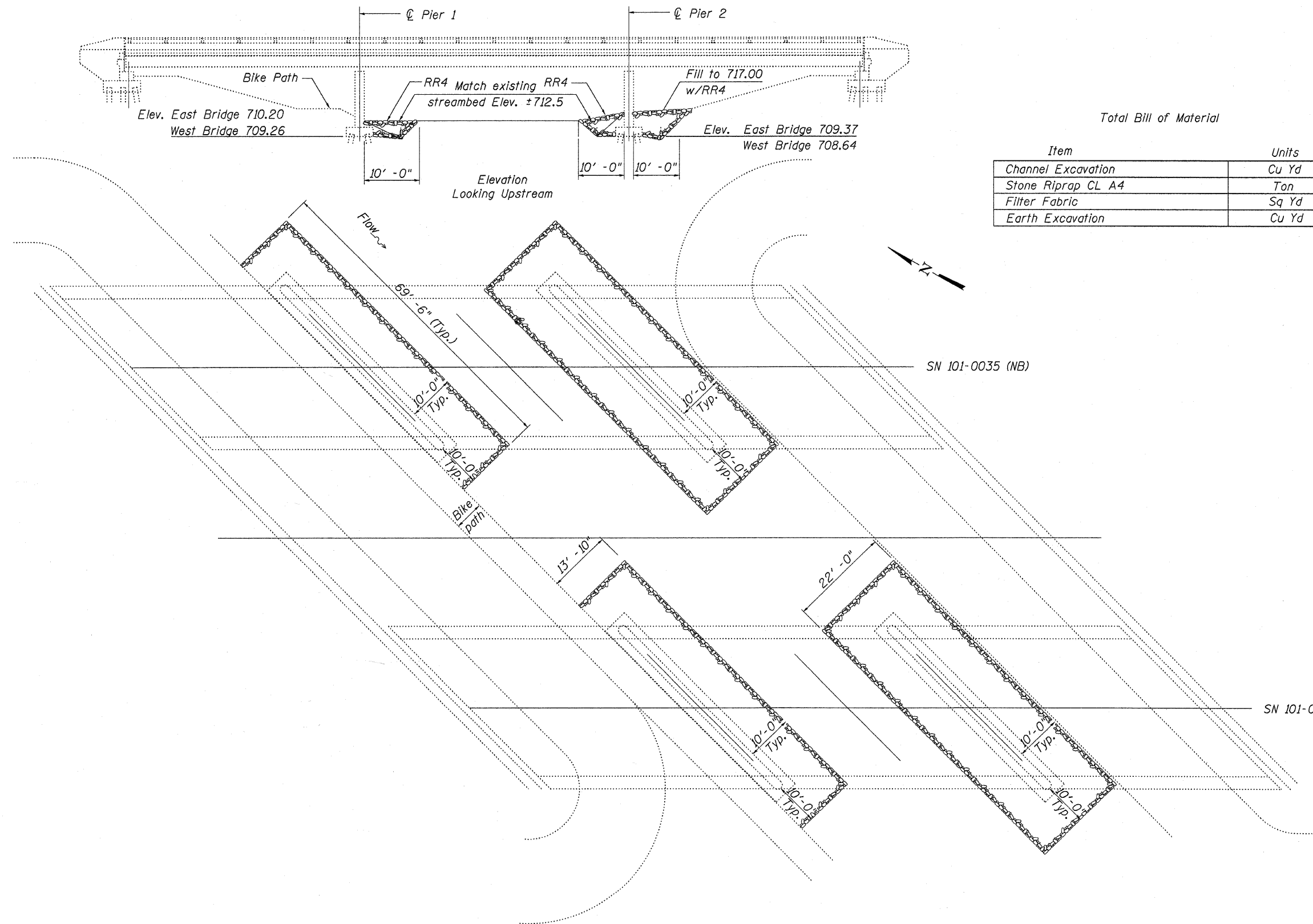
All Borrow/Waste/Use sites must be approved by the Department prior to removing any material from the project or initiating any earthmoving activities, including temporary stockpiling outside the limits of construction.

The Contractor shall seed all disturbed areas within the project limits. Seeding Class 4 shall be used. This work will be included in the contract unit price per Ton for Stone Riprap.

Mulch Method II shall be applied over all seeded areas. This shall be included in the cost of the Stone Riprap.

Culvert & bridge flows must be maintained throughout the project. Normal flow shall be allowed to pass at the rate it enters the jobsite. High flows shall be allowed to pass without causing damage to upstream properties.

FILE NAME =	USER NAME = lmkdj	DESIGNED - ---	REVISED - ---	STATE OF ILLINOIS DEPARTMENT OF TRANSPORTATION	General Notes	F.A.P. RTE.	SECTION	COUNTY	TOTAL SHEETS	SHEET NO.
G:\BRY\CADD plans\Winnebago County\1010035 & 0036\1010035 & 0036.dgn	DRAWN - ---	REVISED - ---	738			(5B-1)M	Winnebago	5	3	
PLOT SCALE = 50,0000' / IN.	CHECKED - ---	REVISED - ---	CONTRACT NO. 64F58							
PLOT DATE = Thu Oct 01 11:09:56 2009	DATE - ---	REVISED - ---	ILLINOIS FED. AID PROJECT							
				SCALE: _____ SHEET NO. ___ OF ___ SHEETS STA. _____ TO STA. _____						



Total Bill of Material

Item	Units	Quantity
Channel Excavation	Cu Yd	285
Stone Riprap CL A4	Ton	520
Filter Fabric	Sq Yd	260
Earth Excavation	Cu Yd	150

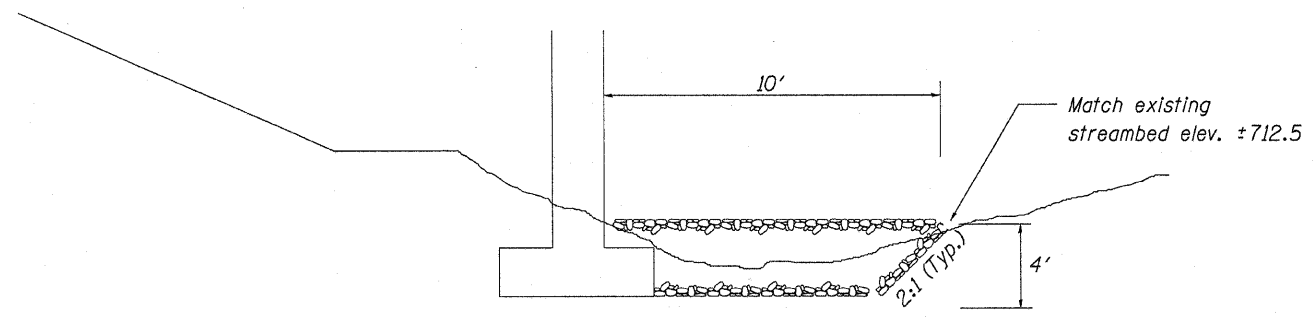
FILE NAME =	USER NAME = linkdj	DESIGNED -	REVISD -
D:\BRV\CADD plans\Winnebago County\1010035 & 0036\1010035 & 0036.dgn		DRAWN -	REVISD -
PLOT SCALE = 50.0000' / IN.		CHECKED -	REVISD -
PLOT DATE = Mon Oct 05 10:21:06 2009		DATE -	REVISD -

**STATE OF ILLINOIS
DEPARTMENT OF TRANSPORTATION**

Scour Countermeasure Details

SCALE: _____ SHEET NO. ____ OF ____ SHEETS STA. _____ TO STA. _____

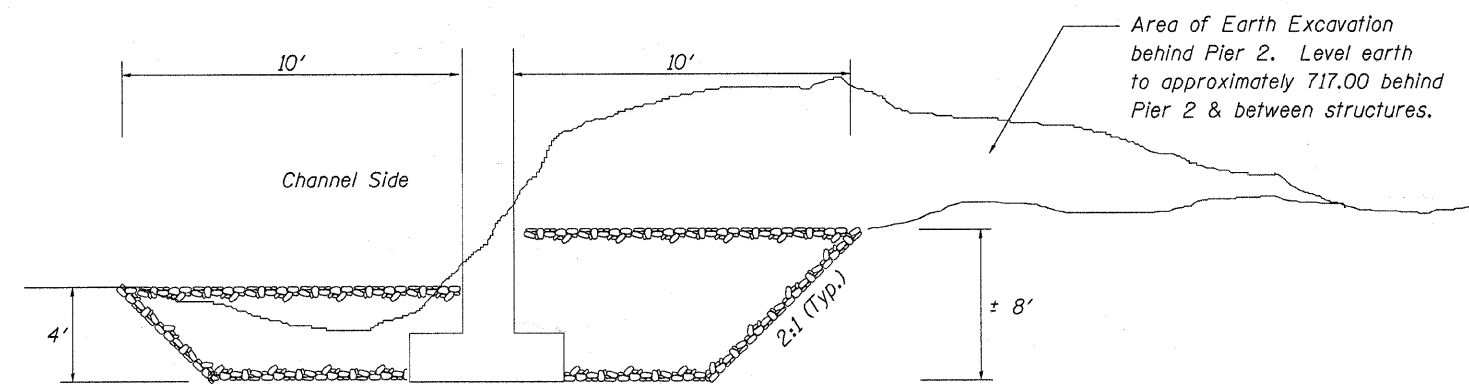
F.A.P. RTE.	SECTION	COUNTY	TOTAL SHEETS	SHEET NO.
738	(5B-1M)	Winnebago	5	4
ILLINOIS FED. AID PROJECT			CONTRACT NO. 64F58	



Piers 1 & 3
(No Scale)

Bill of Material
Piers 1 & 3

Item	Units	Quantity
Channel Excavation	Cu Yd	85
Stone Riprap CL A4	Ton	160
Filter Fabric	Sq Yd	110



Piers 2 & 4
(No Scale)

Bill of Material
Piers 2 & 4

Item	Units	Quantity
Channel Excavation	Cu Yd	200
Stone Riprap CL A4	Ton	360
Filter Fabric	Sq Yd	150