

F.A. RTE.	SECTION	COUNTY	TOTAL SHEETS	SHEET NO.
D2 Bridge Painting 2010-	Illinois	Various	18	3
CONTRACT NO. 64F89				

STATE OF ILLINOIS
DEPARTMENT OF TRANSPORTATION
DIVISION OF HIGHWAYS

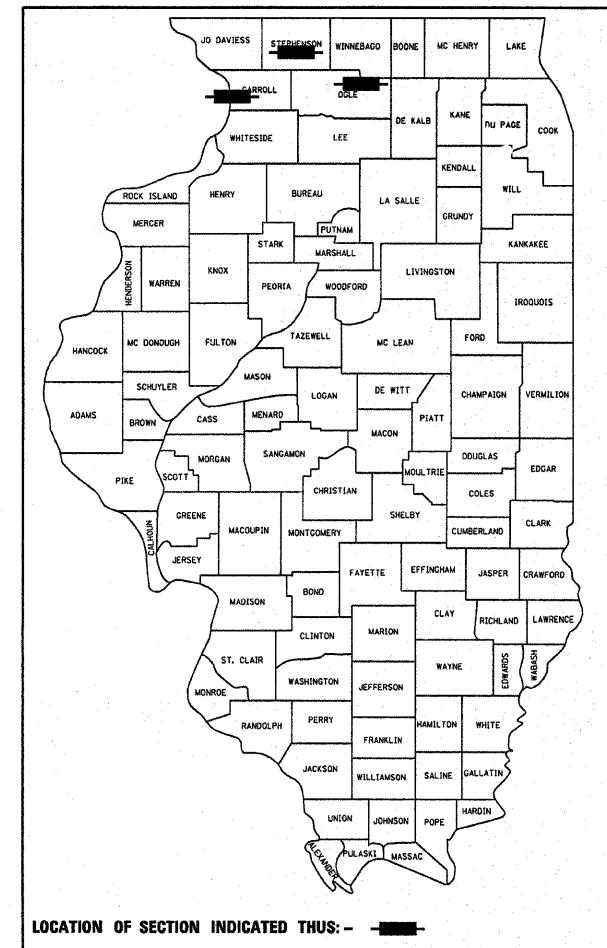
**PROPOSED
HIGHWAY PLANS**

VARIOUS ROUTES
SECTION D2 BRIDGE PAINTING 2010-1

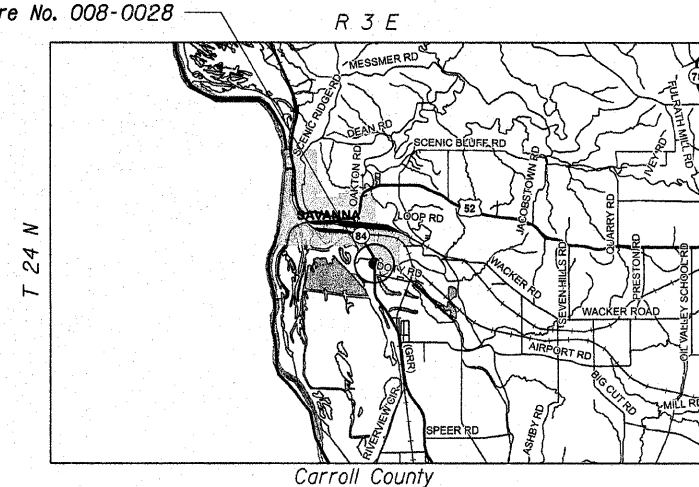
BRIDGE PAINTING
VARIOUS COUNTIES

FOR INDEX OF SHEETS, SEE SHEET NO. 3

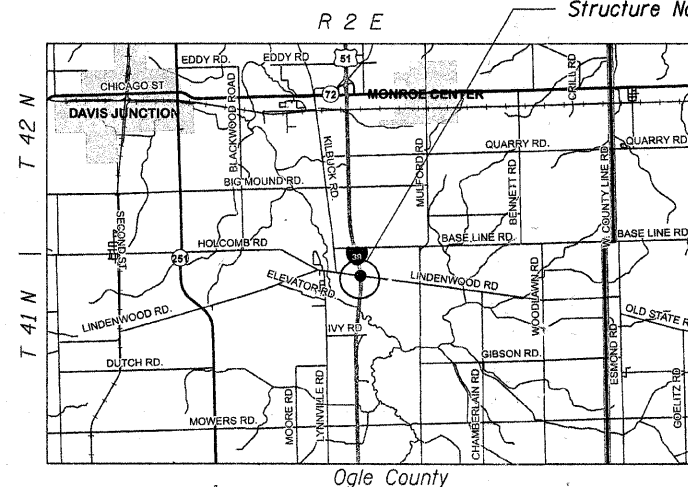
D-92-028-10



Structure No. 008-0028

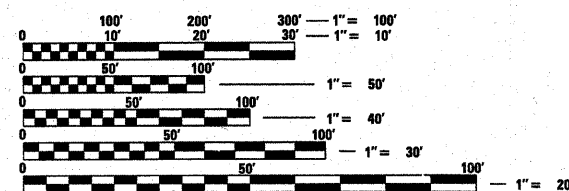
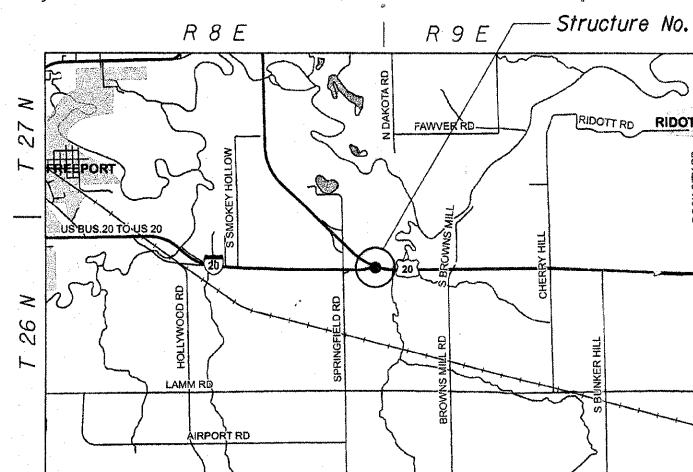


C-92-041-10



Structure No. 071-0051

Structure No. 089-0060



FULL SIZE PLANS HAVE BEEN PREPARED USING STANDARD ENGINEERING SCALES. REDUCED SIZED PLANS WILL NOT CONFORM TO STANDARD SCALES. IN MAKING MEASUREMENTS ON REDUCED PLANS, THE ABOVE SCALES MAY BE USED.

J.U.L.I.E.
JOINT UTILITY LOCATION INFORMATION FOR EXCAVATION
1-800-892-0123
OR 811

BRIDGE ENGINEER: Mahmoud Etemadi 815/284-5393
DISTRICT PAINT TECHNICIAN: Dan Link 815/284-5416

CONTRACT NO. 64F89

GROSS LENGTH = 738.4 FT. = 0.139 MILE

NET LENGTH = 738.4 FT. = 0.139 MILE

STATE OF ILLINOIS
DEPARTMENT OF TRANSPORTATION
DIVISION OF HIGHWAYS

SUBMITTED Jan 20 2010
George F. Ryan
DEPUTY DIRECTOR OF HIGHWAYS, REGION ENGINEER

March 9 2010
Scott E. Stitt, P.E.
ACTING ENGINEER OF DESIGN AND ENVIRONMENT

March 9 2010
Christine M. Roeder
DIRECTOR OF HIGHWAYS, CHIEF ENGINEER

**PRINTED BY THE AUTHORITY
OF THE STATE OF ILLINOIS**