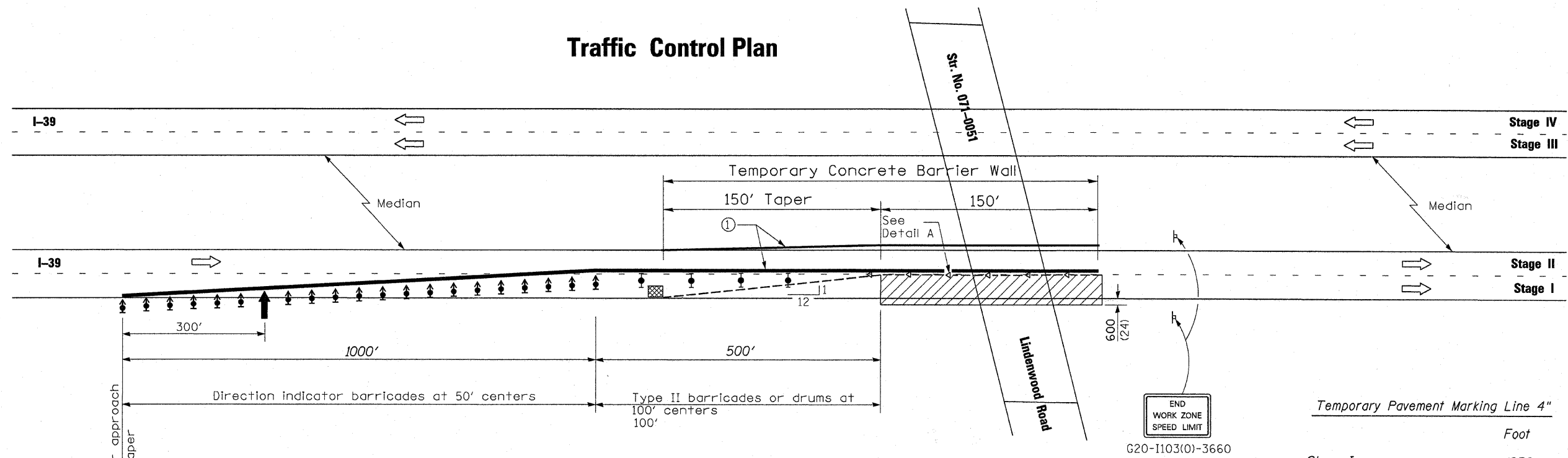


# Traffic Control Plan



see Standard 701400 for approach  
Start of lane closure taper

**Temporary Concrete Barrier**

**Relocate Temporary Concrete Barrier**

Stage I removal	300
Stage II setup	300
Stage II removal	300
Stage III setup	300
Stage III removal	300
Stage IV setup	300
Stage IV removal	300
<b>Total</b>	<b>2100 Feet</b>

**Impact Attenuators, Temporary**

Stage I	1 Each
Stage II	1 Each

**Impact Attenuators, Relocate**

Stage I removal	1
Stage II setup	1
Stage II removal	1
Stage III setup	1
Stage III removal	1
Stage IV setup	1
Stage IV removal	1
<b>Total</b>	<b>7 Each</b>

**Temporary Pavement Marking Line 4"**

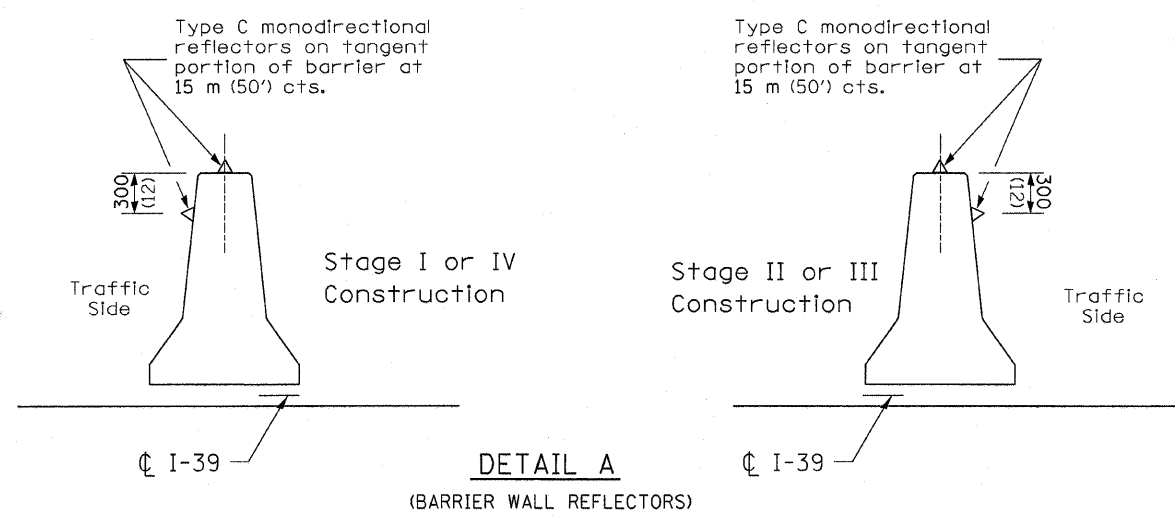
Stage I	1950
Stage II	1950
Stage III	1950
Stage IV	1950
<b>Total</b>	<b>7800 Foot</b>

**Workzone Pavement Marking Removal**

Stage I	650
Stage II	650
Stage III	650
Stage IV	650
<b>Total</b>	<b>2600 Sq Ft</b>

**Stage I**

300 Feet	
<b>Total</b>	<b>300 Feet</b>



- SYMBOLS**
- ↑ Arrow board
  - ▨ Work area
  - ⊥ Sign
  - ↑ Direction indicator barricade with steady burn monodirectional light
  - ⊥ Type II barricade or drum with steady burn monodirectional light
  - - - - Temporary concrete barrier
  - ◁ Type C Monodirectional reflector
  - ▣ Impact attenuator

① Temporary pavement marking shall be placed throughout the taper and along-side the work area. The edge line shall be white for right lane closure and yellow for left lane closures.

All dimensions are in millimeters (Inches) unless otherwise shown.

Traffic Control Plan  
Lindenwood Road over I-88  
Various Routes Section D2 Bridge Painting 2010-1  
Various Counties  
Structure No. 071-0051