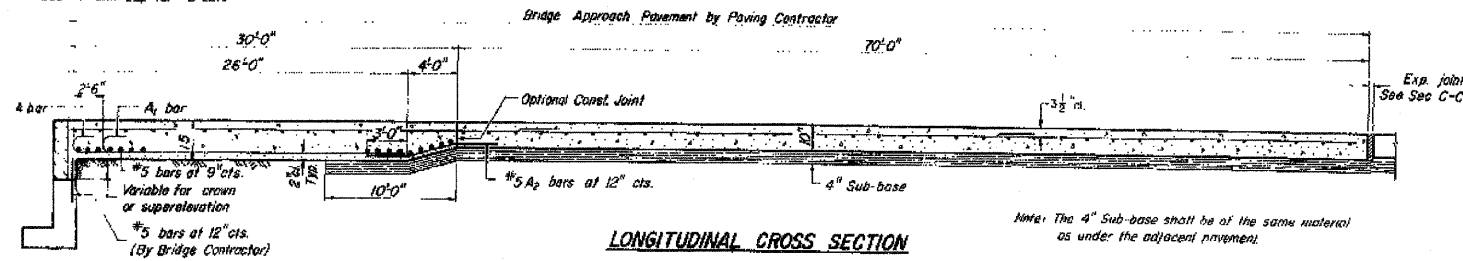
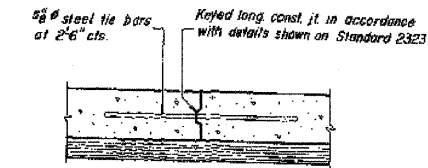


STATE OF ILLINOIS
DEPARTMENT OF TRANSPORTATION

Note: Treat as if #9 bars for min 2" cl. Use 1-4" Min. Lap for #4 bars.
Use 1-6" Min. Lap for #5 bars

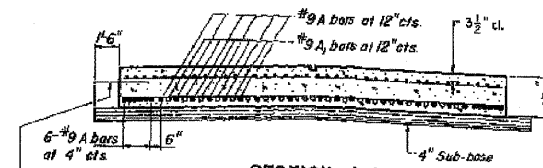
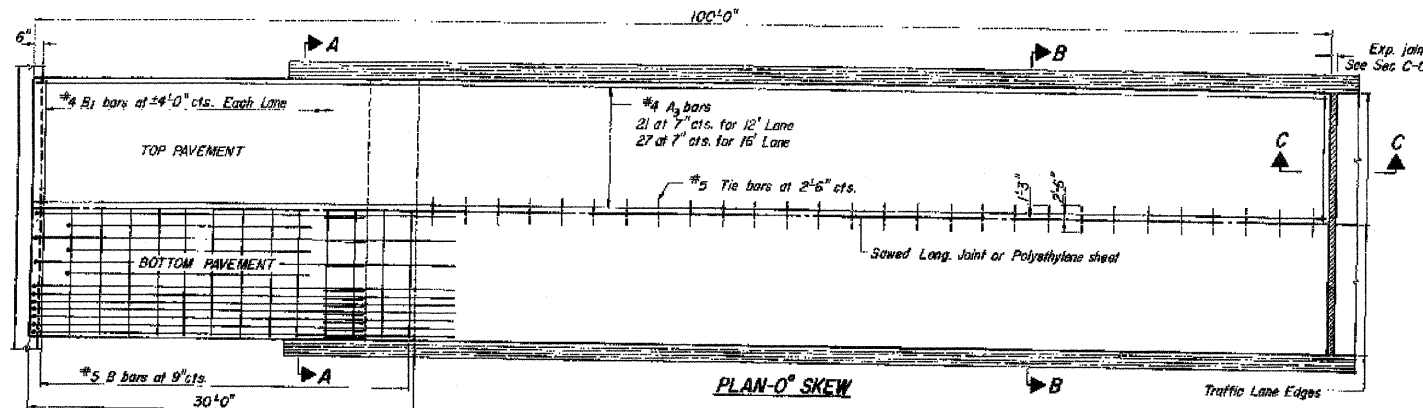


Note: The 4" Sub-base shall be of the same material as under the adjacent pavement.



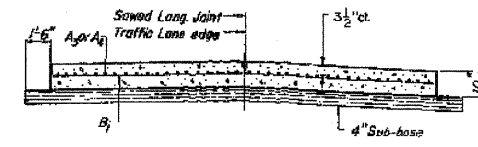
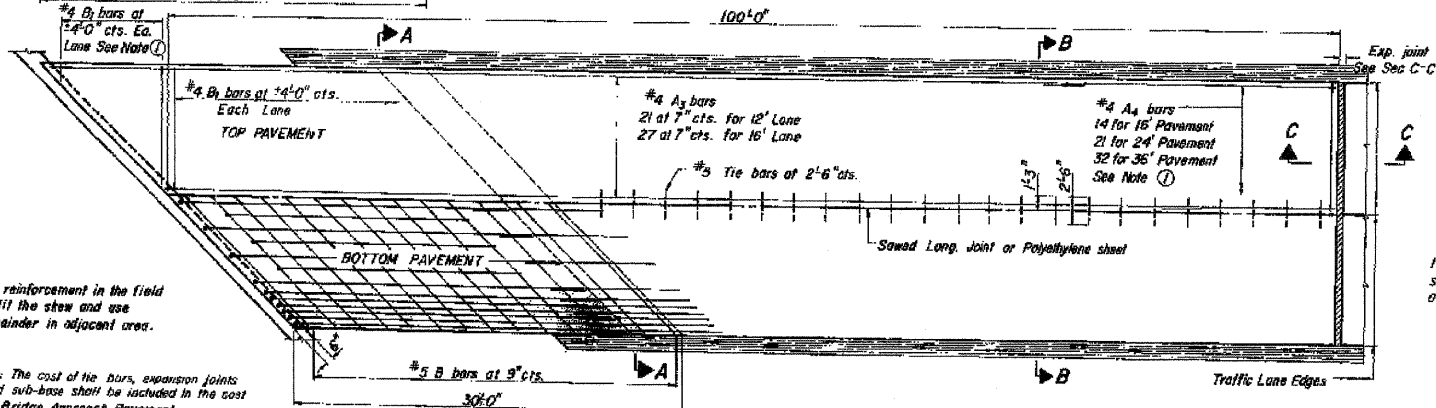
OPTIONAL LONG CONST JOINT

As approved by the Engineer, the contractor may elect to reduce the widths by use of the Optional Longitudinal Construction Joint shown. Joint shall be located at the edge of Traffic Lane.



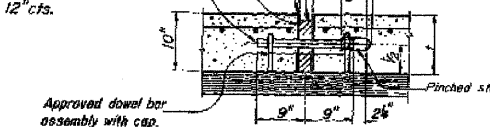
SECTION A-A

Note: When the road plans show curb and gutter, gutter or bridge approach shoulder pavement adjacent to approach slabs, place 3/4" steel tie bars at 2'-6" centers in accordance with the details for Bulkhead Longitudinal Construction Joint shown on Standard 2323. Cost of the tie bars will be included in the contract unit price for the adjacent item. Transitions for curb and gutter shall be as shown on the plans.



SECTION B-B

Finish corners with edge 2" Preformed expansion joint filler. Fill with FAF 3 or 4 if joint filler conforms to Art. 715.05 or 715.06 of the Standard Specifications. 1/4" dia. x 18" long pre-coated smooth dowel bars at 12" cts.

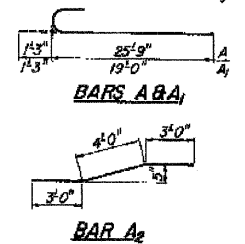
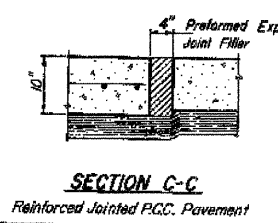
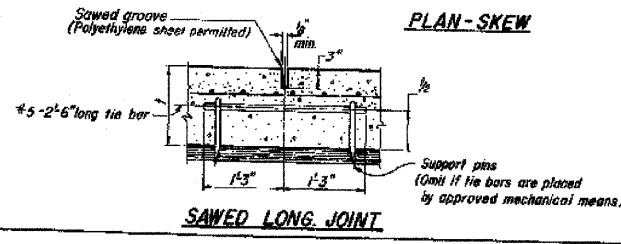


SECTION C-C

Continuous Reinforced R.C.C. Pavement

1) Cut reinforcement in the field to fit the skew and use remainder in adjacent area.
Note: The cost of tie bars, expansion joints and sub-base shall be included in the cost of Bridge Approach Pavement.

Illinois Department of Transportation
PASSED: [Signature] 25 FEB 23 1978
APPROVED: [Signature] 25 FEB 23 1978
Engineer of Design



BRIDGE APPROACH PAVEMENT
[Sheet 1 of 2]
STANDARD 2353-4

H 5204

DESIGNED	ATH
CHECKED	IJL
DRAWN	Kyle M. Steffen
CHECKED	ATH IJL

FEBRUARY 16, 2010
EXAMINED: [Signature]
PASSED: [Signature]
ENGINEER OF BRIDGES AND STRUCTURES

FOR INFORMATION ONLY

REPAIR DETAILS
U.S. ROUTE 6 OVER GENESEO CREEK
SN 037-0133

SHEET NO. 5 6 SHEETS	F.A.U. RTE.	SECTION	COUNTY	TOTAL SHEETS	SHEET NO.
	5671	(4B-1)R-M	HENRY	13	10
FED. ROAD DIST. NO.			ILLINOIS FED. AID PROJECT		
CONTRACT NO. 64F97					