

STATE OF ILLINOIS
DEPARTMENT OF TRANSPORTATION

QUANTITIES FOR 100-FOOT APPROACH SLAB

Skew Angle	Bottom Reinforcement				Top Reinforcement				Total Weight bars-lbs.
	#5 B bars		A		#4 A ₃ bars		#4 A ₄ bars		
	No.	Length	A ₁	A ₂	No.	Length	No.	Length	

Skew Angle	Bottom Reinforcement				Top Reinforcement				Total Weight bars-lbs.
	#5 B bars		A		#4 A ₃ bars		#4 A ₄ bars		
	No.	Length	A ₁	A ₂	No.	Length	No.	Length	

Skew Angle	Bottom Reinforcement				Top Reinforcement				Total Weight bars-lbs.
	#5 B bars		A		#4 A ₃ bars		#4 A ₄ bars		
	No.	Length	A ₁	A ₂	No.	Length	No.	Length	

16-FOOT WIDTH PAVEMENT

Skew Angle	Bottom Reinforcement	Top Reinforcement	Total Weight
0°	40	15'-6"	5980
5°	40	15'-7"	6010
10°	40	15'-9"	6020
15°	40	16'-1"	6030
20°	40	16'-6"	6050
25°	40	17'-1"	6070
30°	40	17'-11"	6110
35°	40	18'-11"	6150
40°	40	20'-3"	6200
45°	40	21'-11"	6280
50°	40	24'-1"	6370
55°	40	27'-0"	6490
60°	40	31'-0"	6660

Bridge Approach Pavement
178 Sq. Yds.

24-FOOT WIDTH PAVEMENT

Skew Angle	Bottom Reinforcement	Top Reinforcement	Total Weight
0°	40	23'-6"	8840
5°	40	23'-7"	8880
10°	40	23'-10"	8890
15°	40	24'-0"	8910
20°	40	25'-0"	8940
25°	40	25'-11"	8990
30°	40	27'-2"	9030
35°	40	28'-8"	9090
40°	40	30'-8"	9170
45°	40	33'-3"	9290
50°	80	19'-1"	9490
55°	80	21'-4"	9680
60°	80	24'-4"	9940

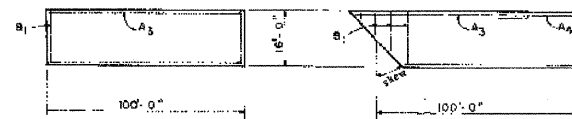
Bridge Approach Pavement
267 Sq. Yds.

36-FOOT WIDTH PAVEMENT

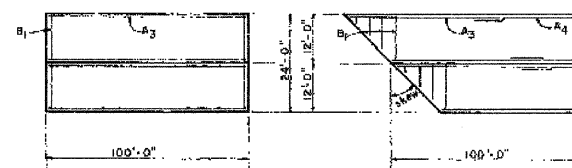
Skew Angle	Bottom Reinforcement	Top Reinforcement	Total Weight
0°	40	35'-6"	13040
5°	40	35'-9"	13090
10°	40	36'-0"	13110
15°	80	19'-4"	13230
20°	80	19'-10"	13260
25°	80	20'-7"	13330
30°	80	21'-6"	13410
35°	80	22'-8"	13510
40°	80	24'-2"	13630
45°	80	26'-2"	13840
50°	80	28'-8"	14050
55°	80	32'-0"	14330
60°	80	36'-7"	14710

Bridge Approach Pavement
400 Sq. Yds.

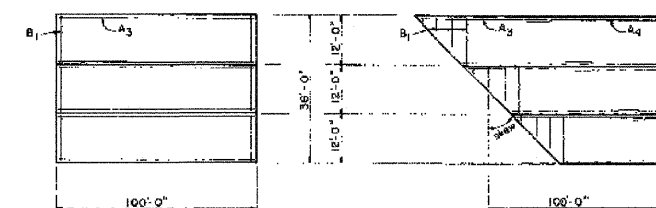
TOP OF SLAB BAR ARRANGEMENT



TOP OF SLAB BAR ARRANGEMENT



TOP OF SLAB BAR ARRANGEMENT



Illinois Department of Transportation
PASSED: [Signature] 29... 1979
APPROVED: [Signature] 29... 1979
Engineer of Design

BRIDGE APPROACH PAVEMENT

(Sheet 2 of 2)
STANDARD 2353-4

DESIGNED	ATH
CHECKED	IJL
DRAWN	Kyle M. Steffen
CHECKED	ATH IJL

FEBRUARY 16, 2010
EXAMINED: [Signature]
PASSED: [Signature]
ENGINEER OF BRIDGES AND STRUCTURES

FOR
INFORMATION
ONLY

REPAIR DETAILS
U.S. ROUTE 6 OVER GENESEO CREEK
SN 037-0133

SHEET NO. 6 6 SHEETS	F.A.U. RTE.	SECTION	COUNTY	TOTAL SHEETS	SHEET NO.
	5671	(4B-1)R-M	HENRY	13	11
FED. ROAD DIST. NO. ILLINOIS			FED. AID PROJECT		
			CONTRACT NO. 64F97		