

F.A.U. RTE.	SECTION	COUNTY	TOTAL SHEETS	SHEET NO.
5671	(4B-1)R-M	Henry	13	1
		ILLINOIS	CONTRACT NO. 64F97	

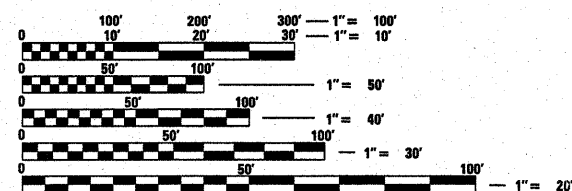
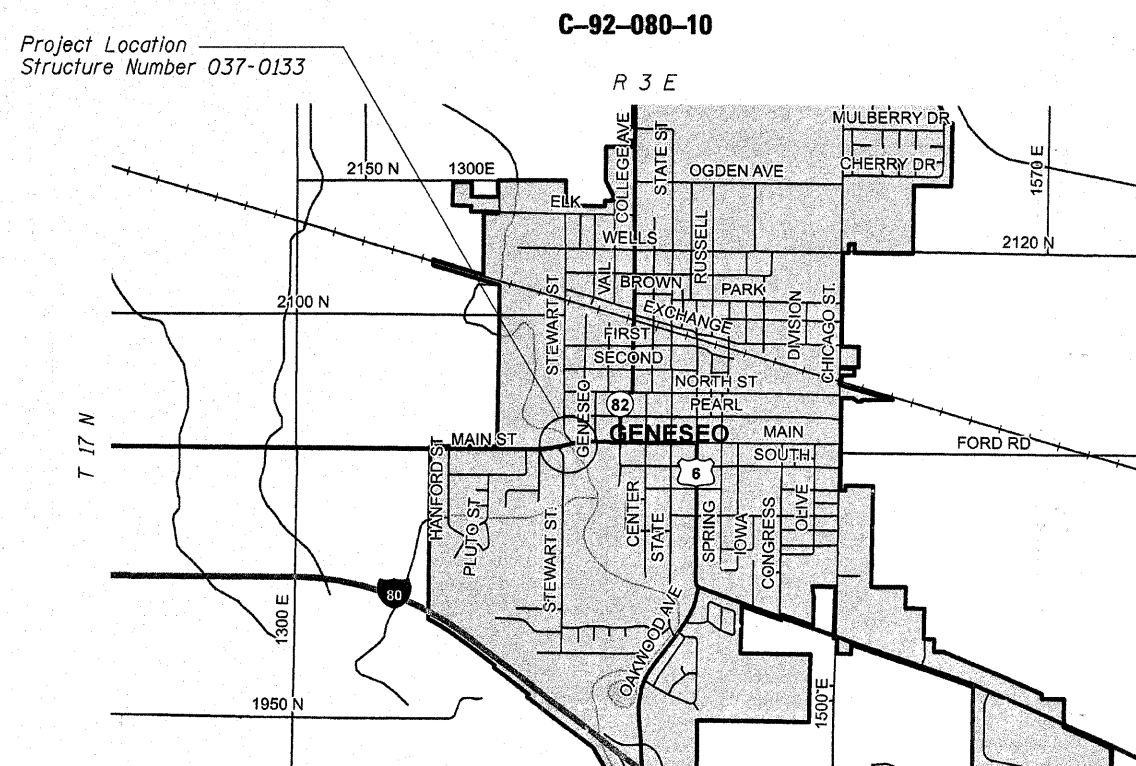
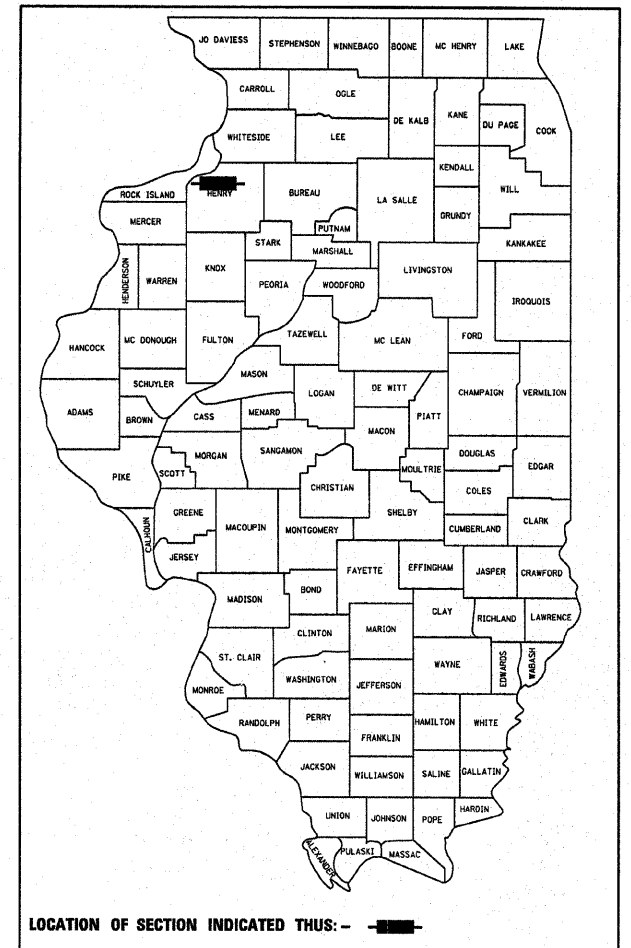
INDEX OF SHEETS

1. Cover Sheet
2. Summary of Quantities
3. General Notes, Standards
4. Traffic Control Plan Stage I
5. Traffic Control Plan Stage II
6. Plan & Elevation Structure 037-0133
7. Repair Details
8. Preformed Joint Strip Seal
9. Bar Splicer Assembly Details
10. Repair Details
11. Repair Details
12. District Standard 40.1 Traffic Control for Road Closure
13. District Standards 39.2 Informational Warning Sign & 99.4 Stop Line Sign for Temporary Signals

STATE OF ILLINOIS
DEPARTMENT OF TRANSPORTATION
DIVISION OF HIGHWAYS
PROPOSED
HIGHWAY PLANS

FAU ROUTE 5671 (US 6)
SECTION (4B-1)R-M
BRIDGE REPAIRS
HENRY COUNTY

D-92-043-10



FULL SIZE PLANS HAVE BEEN PREPARED USING STANDARD ENGINEERING SCALES. REDUCED SIZED PLANS WILL NOT CONFORM TO STANDARD SCALES. IN MAKING MEASUREMENTS ON REDUCED PLANS, THE ABOVE SCALES MAY BE USED.

J.U.L.I.E.
 JOINT UTILITY LOCATION INFORMATION FOR EXCAVATION
 1-800-892-0123
 OR 811

PROJECT ENGINEER: Mahmoud Etemadi 815/284-5393

GROSS LENGTH = 11.06 FT. = 0.002 MILE
 NET LENGTH = 11.06 FT. = 0.002 MILE

CONTRACT NO. 64F97

STATE OF ILLINOIS
DEPARTMENT OF TRANSPORTATION
DIVISION OF HIGHWAYS

SUBMITTED Jan 20 2010
George F. Ryan
 DEPUTY DIRECTOR OF HIGHWAYS, REGION ENGINEER

March 19 2010
Scott E. Stitt, P.E.
 ACTING ENGINEER OF DESIGN AND ENVIRONMENT

March 19 2010
Christine M. Rodla
 DIRECTOR OF HIGHWAYS, CHIEF ENGINEER

PRINTED BY THE AUTHORITY
OF THE STATE OF ILLINOIS

SUMMARY OF QUANTITIES

<i>paycode</i>	<i>description</i>	<i>units</i>	<i>100% State SFTY-2A quantity</i>
50102400	CONCRETE REMOVAL	CU YD	20.6
50300255	CONCRETE SUPERSTRUCTURE	CU YD	20.4
50800205	REINFORCEMENT BARS, EPOXY COATED	POUND	3390
50800515	BAR SPLICERS	EACH	8
52000110	PREFORMED JOINT STRIP SEAL	FOOT	44
67100100	MOBILIZATION	L SUM	1
70100405	TRAFFIC CONTROL AND PROTECTION, STANDARD 701321	EACH	1
70100450	TRAFFIC CONTROL AND PROTECTION, STANDARD 701201	L SUM	1
70102640	TRAFFIC CONTROL AND PROTECTION, STANDARD 701801	L SUM	1
70106500	TEMPORARY BRIDGE TRAFFIC SIGNALS	EACH	1
70300220	TEMPORARY PAVEMENT MARKING - LINE 4"	FOOT	1086
70300280	TEMPORARY PAVEMENT MARKING - LINE 24"	FOOT	24
70301000	WORK ZONE PAVEMENT MARKING REMOVAL	SQ FT	415
70400100	TEMPORARY CONCRETE BARRIER	FOOT	225
70400200	RELOCATE TEMPORARY CONCRETE BARRIER	FOOT	225
X5080600	MECHANICAL SPLICERS	EACH	116
X7013015	TRAFFIC CONTROL FOR ROAD CLOSURE	L SUM	1
Z0030250	IMPACT ATTENUATORS, TEMPORARY (NON- REDIRECTIVE), TEST LEVEL 3	EACH	2
Z0030350	IMPACT ATTENUATORS, RELOCATE (NON- REDIRECTIVE), TEST LEVEL 3	EACH	2

FILE NAME =	USER NAME = lirkdj	DESIGNED - ---	REVISED - ---	STATE OF ILLINOIS DEPARTMENT OF TRANSPORTATION	Summary of Quantities	F.A.U. RTE.	SECTION	COUNTY	TOTAL SHEETS	SHEET NO.	
0:\BR\CADD\plans\Henry County\0378133\PL	ANeng.dgn	DRAWN - ---	REVISED - ---			5671	4B-1R-M	Henry	13	2	
PLOT SCALE = 50.0000' / IN.	CHECKED - ---	REVISED - ---				CONTRACT NO. 64F97					
PLOT DATE = Tue Jan 19 09:25:38 2010	DATE - ---	REVISED - ---				ILLINOIS FED. AID PROJECT					

GENERAL NOTES

The final top four inches of soil in any right-of-way area disturbed by the Contractor must be capable of supporting vegetation. The soil must be from the A horizon (zero to 2' deep) of soil profiles of local soils.

All Borrow/Waste/Use sites must be approved by the Department prior to removing any material from the project or initiating any earthmoving activities, including temporary stockpiling outside the limits of construction.

The Contractor shall seed all disturbed areas within the project limits. Seeding Class 4 or 2A shall be used, except in front of properties where the grass will be mowed, then use Seeding, Class 1. Class 2A shall be used on front slopes and ditch bottoms. Class 4 shall be used behind Type A gutter, on all backslopes and areas behind the backslope, and beyond the toe of front slope on fill sections without ditches. This work will be included in the contract unit price per Cubic Yard for CONCRETE REMOVAL.

Fertilizer shall be applied to all disturbed areas and incorporated into the seedbed prior to seeding or placement of sod at the rate specified in Sections 250 and 252 of the Standard Specifications. This work shall be included in the cost of CONCRETE REMOVAL.

Mulch Method II shall be applied over all seeded areas. This shall be included in the cost of the CONCRETE REMOVAL.

At bridge expansion joints, if temporary expansion joint bulkheads are attached to adjacent deck slabs or abutments for support, the Contractor shall cut the attachments as soon as the concrete has set to prevent joint damage due to horizontal contraction or expansion.

The Contractor shall be responsible for protecting utility property during construction operations as outlined in Article 107.31 of the Standard Specifications. A minimum of 48 hours advance notice is required for non-emergency work. The JULIE number is 800-892-0123.

STANDARDS

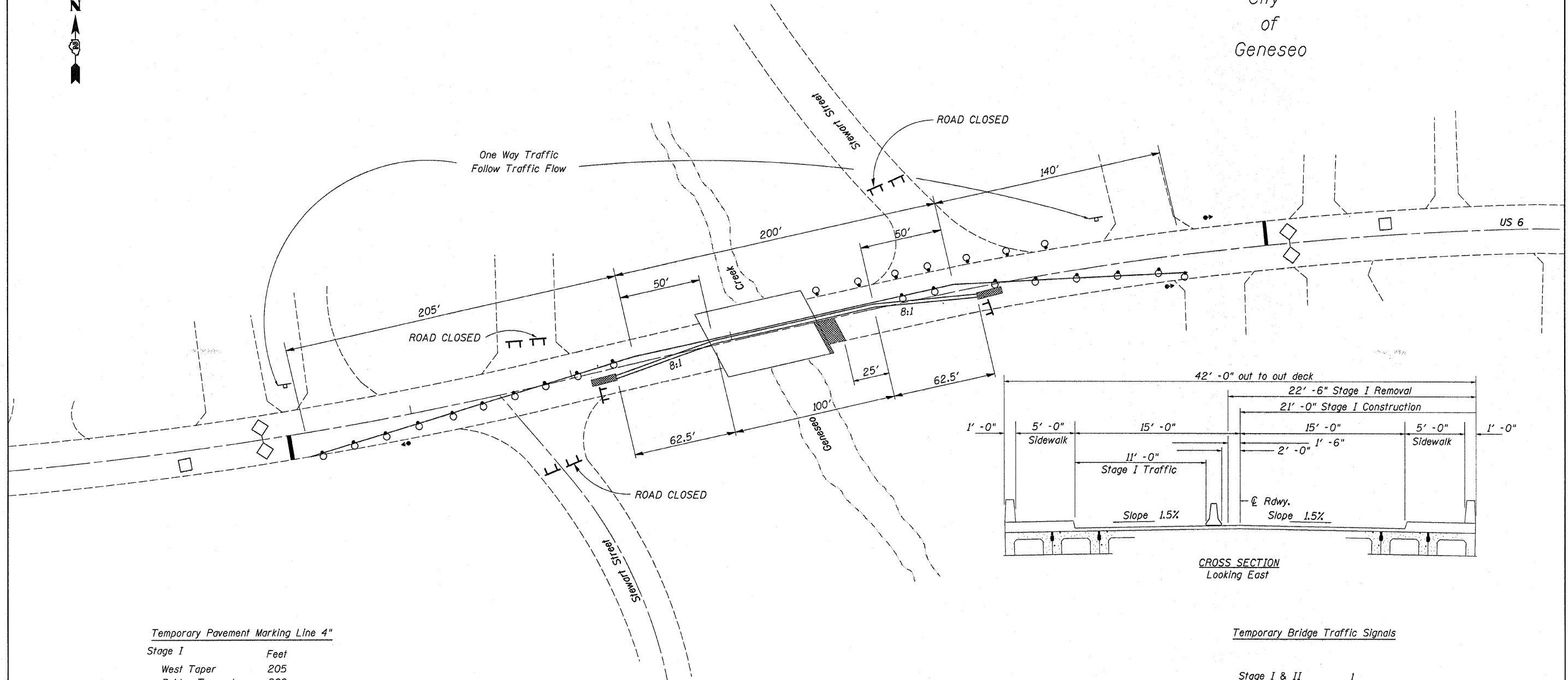
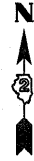
- 701006-03 Off-Road Operations, 2L, 2W, 4.5 m (15') to 600 mm (24") From Pavement Edge
- 701201-03 Lane Closure, 2L, 2W, Day Only, for Speeds > 45 MPH
- 701301-03 Lane Closure, 2L, 2W, Short Time Operations
- 701321-10 Lane Closure, 2L, 2W, Bridge Repair with Barrier
- 701801-04 Lane Closure, Multilane 1W or 2W Crosswalk or Sidewalk Closure
- 701901-01 Traffic Control Devices
- 704001-06 Temporary Concrete Barrier
- 720011-01 Metal Posts for Signs, Markers and Delineators
- 728001-01 Telescoping Steel Sign Support
- 729001-01 Applications of Types A and B Metal Posts (For Signs & Markers)

FILE NAME =	USER NAME = jinkd	DESIGNED -	REVISED -	STATE OF ILLINOIS DEPARTMENT OF TRANSPORTATION	Index of Sheets Standards		F.A.J. RTE.	SECTION	COUNTY	TOTAL SHEETS	SHEET NO.
0:\BR\CDADD plans\Henry County\0378133\	ANeng.dgn	DRAWN -	REVISED -				5671	(4B-1R-M)	Henry	13	3
	PLOT SCALE = 50.0000' / IN.	CHECKED -	REVISED -		SCALE: _____ SHEET NO. ___ OF ___ SHEETS STA. _____ TO STA. _____		CONTRACT NO. 64F97				
	PLOT DATE = Tue Jan 19 09:25:44 2010	DATE -	REVISED -		ILLINOIS FED. AID PROJECT						

Traffic Control Plan STAGE I

Refer to Standard 701321 for additional signs, details & devices

City
of
Geneseo



Temporary Pavement Marking Line 4"

Stage I	Feet
West Taper	205
Bridge Tangent	200
East Taper	140

Stage II

West Taper	136
Bridge Tangent	225
East Taper	180
Total	1086 Feet

Temporary Pavement Marking Line 24"

Stop Bars	Feet
US 6 EB	12
US 6 WB	12
Total	24 Feet

Temporary Concrete Barrier

Stage I	Feet
West Taper	62.5
Bridge Tangent	100
East Taper	62.5
Total	225 Feet

Temporary Impact Attenuator

Stage I	Each
West	1
East	1
Total	2 Each

Temporary Bridge Traffic Signals

Stage I & II	1
	1

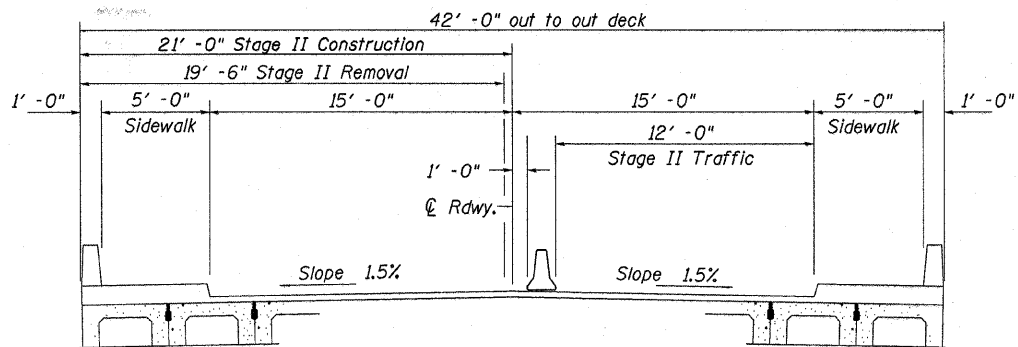
Note: Reduce sign spacing to 200' where the speed limit is 30 MPH.

FILE NAME =	USER NAME = linkdj	DESIGNED -	REVISED -	STATE OF ILLINOIS DEPARTMENT OF TRANSPORTATION	Traffic Control Plan Stage I		F.A.U. RTE.	SECTION	COUNTY	TOTAL SHEETS	SHEET NO.	
Di:\BRYCADD plans\Henry County\0370133\Planeng.dgn		DRAWN -	REVISED -		SCALE: _____	SHEET NO. _____	OF _____ SHEETS	5671	(4B-1R-M)	Henry	13	4
		CHECKED -	REVISED -		STA. _____	TO STA. _____	CONTRACT NO. 64F97					
		DATE -	REVISED -		ILLINOIS FED. AID PROJECT							

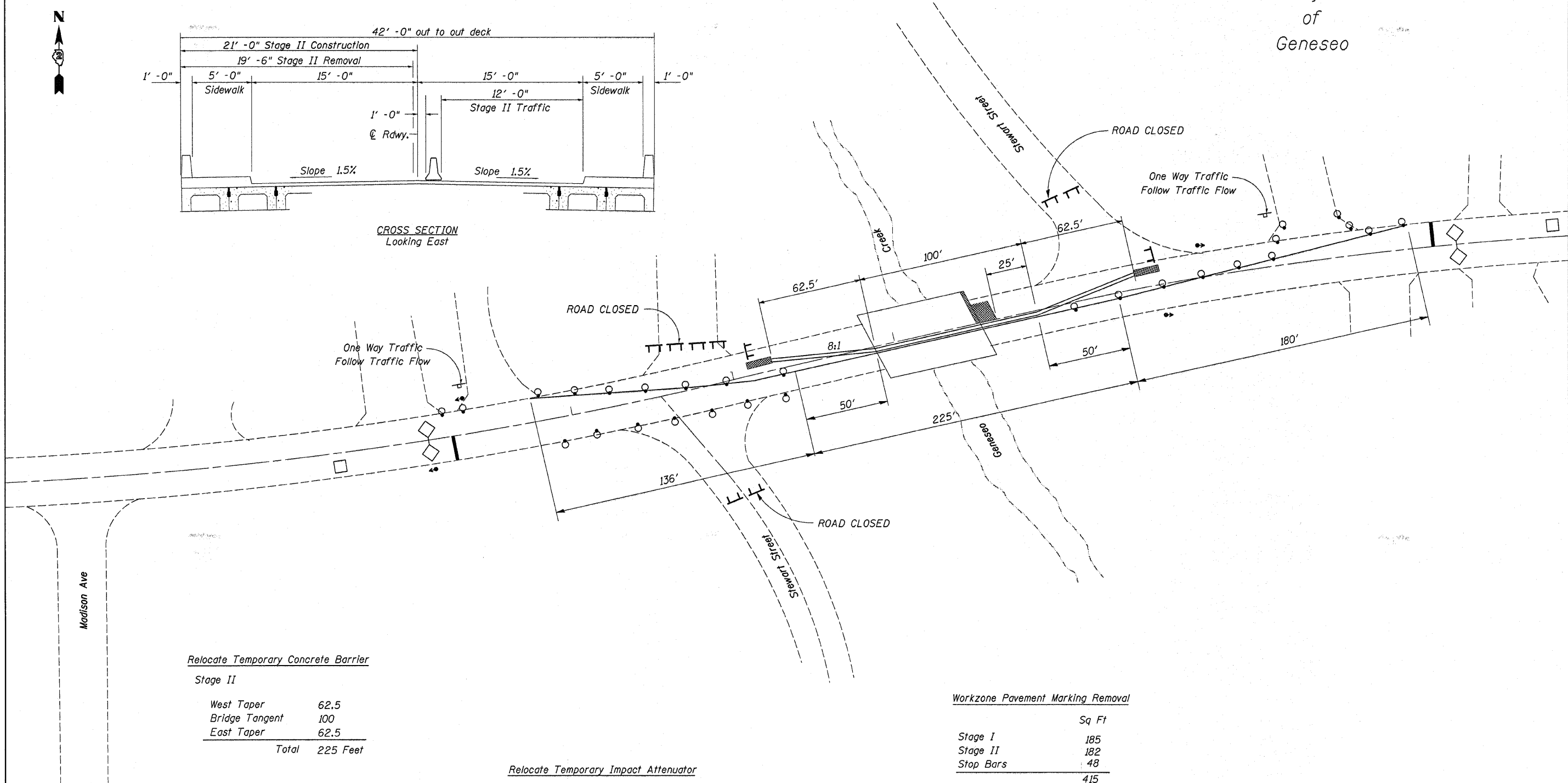
Traffic Control Plan STAGE II

Refer to Standard 701321 for additional signs, details & devices

City
of
Geneseo



CROSS SECTION
Looking East



Relocate Temporary Concrete Barrier

Stage II

West Taper	62.5
Bridge Tangent	100
East Taper	62.5
Total	225 Feet

Relocate Temporary Impact Attenuator

Stage II	Each
West	1
East	1
Total	2 Each

Workzone Pavement Marking Removal

	Sq Ft
Stage I	185
Stage II	182
Stop Bars	48
Total	415

Note: Reduce sign spacing to 200' where the speed limit is 30 MPH.

FILE NAME =	USER NAME = lirkdj	DESIGNED -	REVISED -	STATE OF ILLINOIS DEPARTMENT OF TRANSPORTATION	Traffic Control Plan Stage II		F.A.U. RTE.	SECTION	COUNTY	TOTAL SHEETS	SHEET NO.	
D:\BRVCADD plans\Henry County\0370133\Pl\A1eng.dgn		DRAWN -	REVISED -		SCALE: _____	SHEET NO. _____ OF _____ SHEETS	STA. _____ TO STA. _____	5671	(4B-1)R-M	Henry	13	5
PLOT SCALE = 38.0000' / IN.		CHECKED -	REVISED -		CONTRACT NO. 64F97							
PLOT DATE = Tue Jan 19 09:26:26 2010		DATE -	REVISED -		ILLINOIS FED. AID PROJECT							

STATE OF ILLINOIS
DEPARTMENT OF TRANSPORTATION

GENERAL NOTES

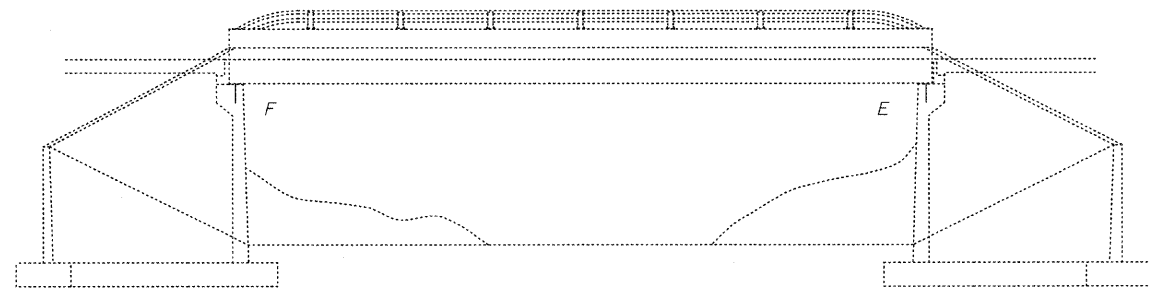
Reinforcement bars shall conform to the requirements of ASTM A 706 Gr 60. See Special Provisions.

Reinforcement bars designated (E) shall be epoxy coated.

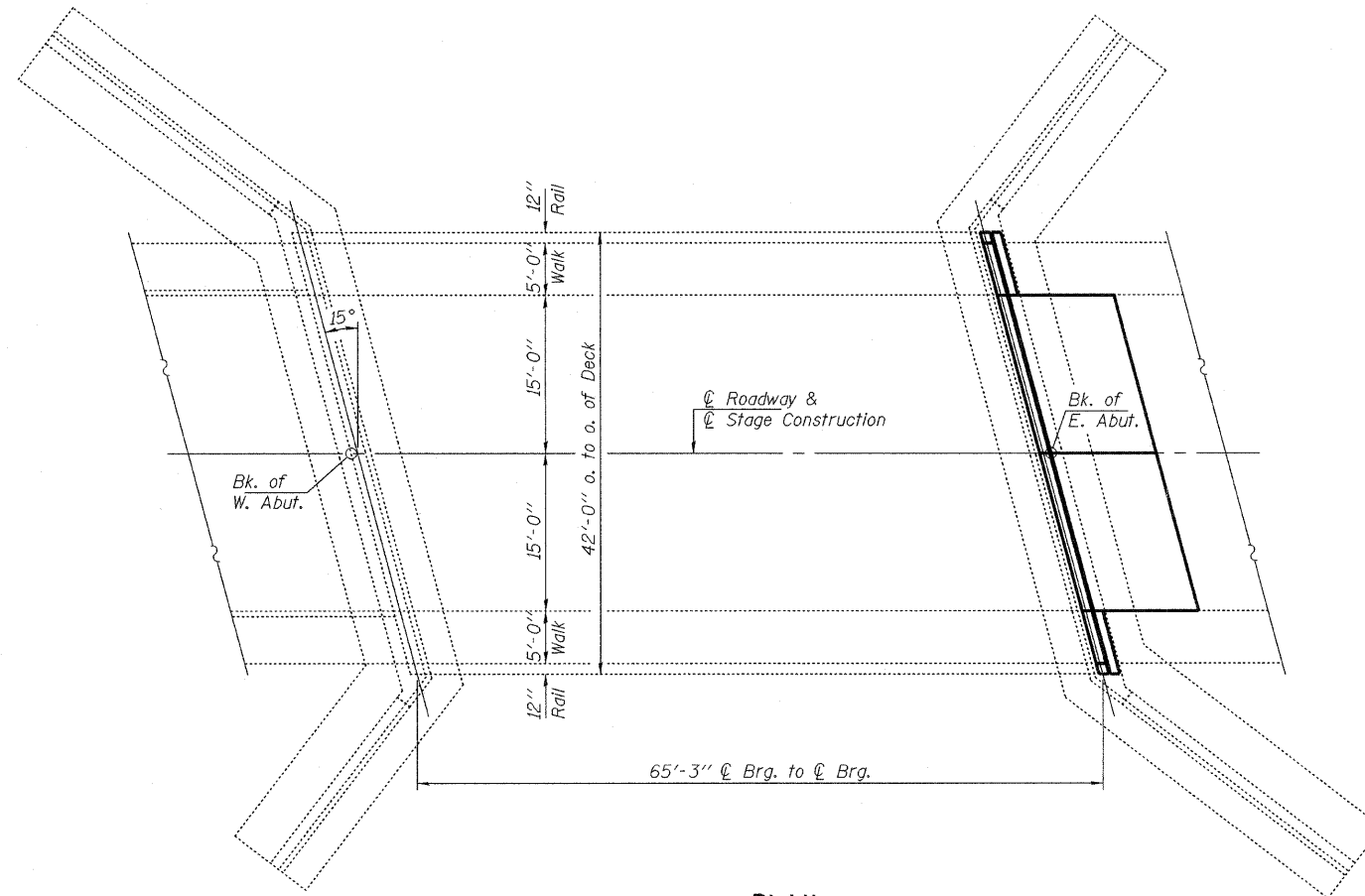
Plan dimensions and details relative to existing plans are subject to nominal construction variations. The Contractor shall field verify existing dimensions and details affecting new construction and make necessary approved adjustments prior to construction or ordering of materials. Such variations shall not be cause for additional compensation for a change in scope of the work, however, the Contractor will be paid for the quantity actually furnished at the unit price bid for the work.

Existing reinforcement bars extending into the removal area shall be cleaned, straightened and incorporated into the new construction. Any reinforcement bars that are damaged during concrete removal shall be replaced with an approved bar splicer or anchorage system. Cost included with Concrete Removal.

Joint openings shall be adjusted according to Article 520.04 of the Std. Specs. when the deck is poured at an ambient temperature other than 50° F.



ELEVATION



PLAN

TOTAL BILL OF MATERIAL

ITEM	UNIT	QUANTITY
Concrete Removal	Cu. Yd.	20.6
Concrete Superstructure	Cu. Yd.	20.4
Reinforcement Bars, Epoxy Coated	Pound	3390
Preformed Joint Strip Seal	Foot	44
Mechanical Splicers	Each	116
Bar Splicers	Each	8

**PLAN & ELEVATION
U.S. ROUTE 6 OVER GENESEO CREEK
SN 037-0133**

DESIGNED *Alvan T. Holloway*
CHECKED *Jim J. Joply*
DRAWN *Kyle M. Steffen*
CHECKED *ATH ISL*

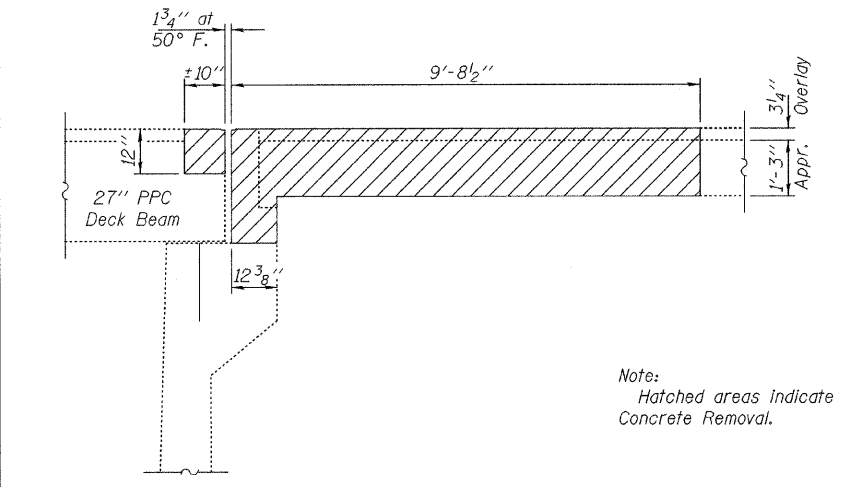
FEBRUARY 16, 2010
EXAMINED *Dr. Carl Brown*
PASSED *Robert E. Anderson*



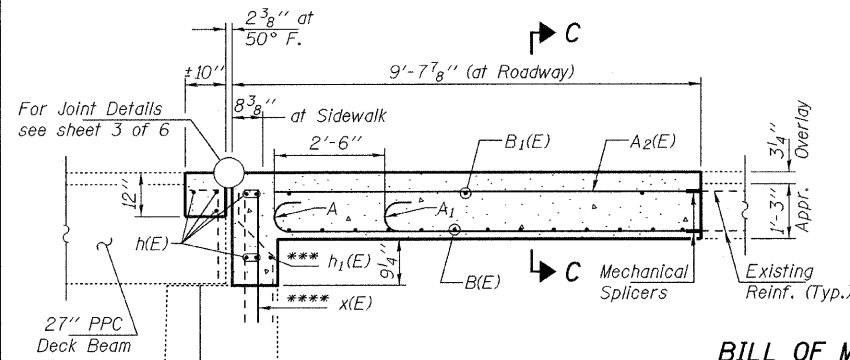
Expires: November 30, 2010

SHEET NO. 1 6 SHEETS	F.A.U. RTE.	SECTION	COUNTY	TOTAL SHEETS	SHEET NO.
	5671	(4B-1)R-M	HENRY	13	6
FED. ROAD DIST. NO.			ILLINOIS FED. AID PROJECT		
			CONTRACT NO. 64F97		

STATE OF ILLINOIS
DEPARTMENT OF TRANSPORTATION



SECTION A-A
Dims. at Rt. L

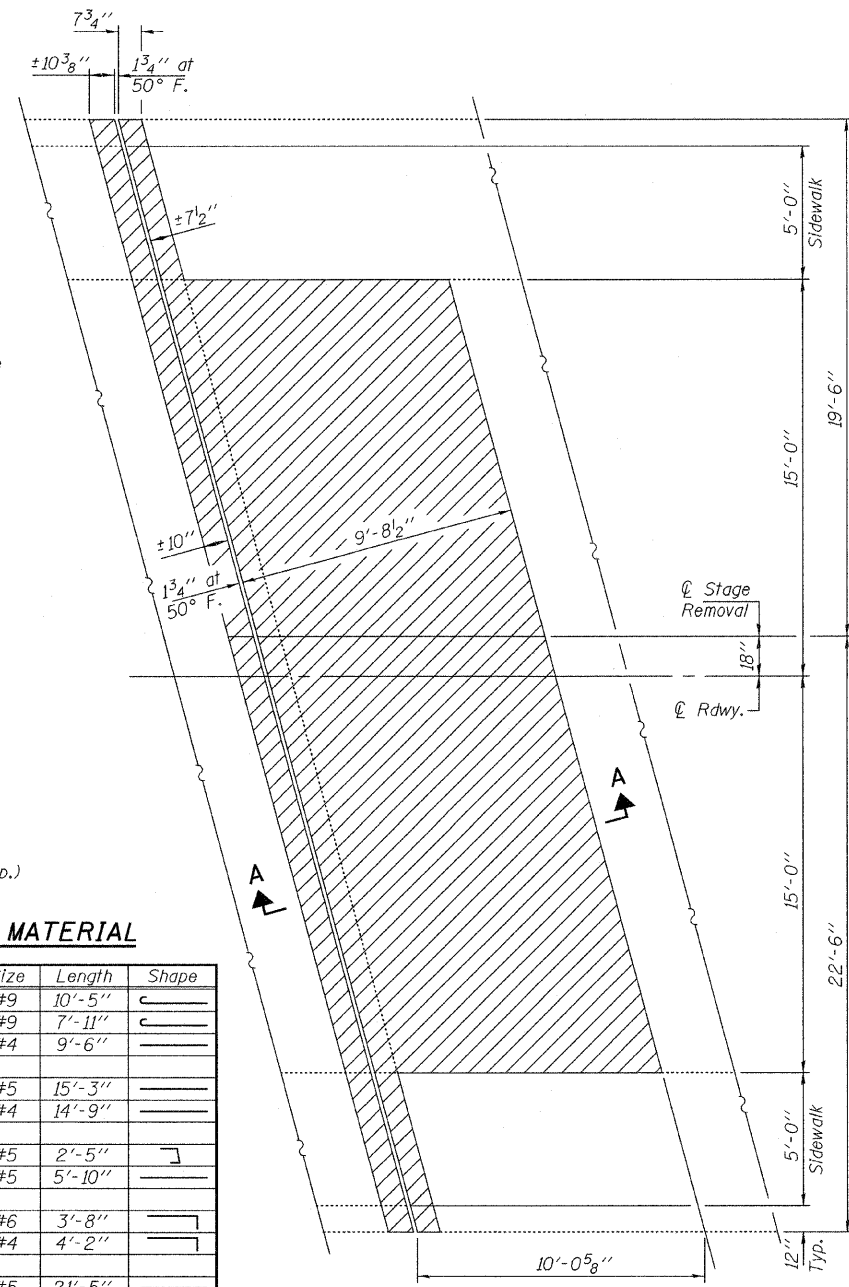


SECTION B-B
Dims. at Rt. L
(See sheet 3 of 4 for Section C-C)

Note:
Hatched areas indicate
Concrete Removal.

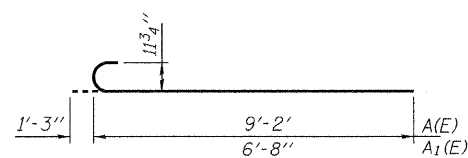
BILL OF MATERIAL

Bar	No.	Size	Length	Shape
A(E)	38	#9	10'-5"	
A ₁ (E)	26	#9	7'-11"	
A ₂ (E)	52	#4	9'-6"	
B(E)	24	#5	15'-3"	
B ₁ (E)	6	#4	14'-9"	
C(E)	4	#5	2'-5"	
C ₁ (E)	4	#5	5'-10"	
D ₁ (E)	4	#6	3'-8"	
D ₂ (E)	4	#4	4'-2"	
h(E)	14	#5	21'-5"	
h ₁ (E)	2	#6	15'-3"	
h ₂ (E)	8	#5	5'-10"	
x(E)	42	#5	3'-0"	
Concrete Removal		Cu. Yd.	20.6	
Concrete Superstructure		Cu. Yd.	20.4	
Reinforcement Bars, Epoxy Coated		Pound	3390	

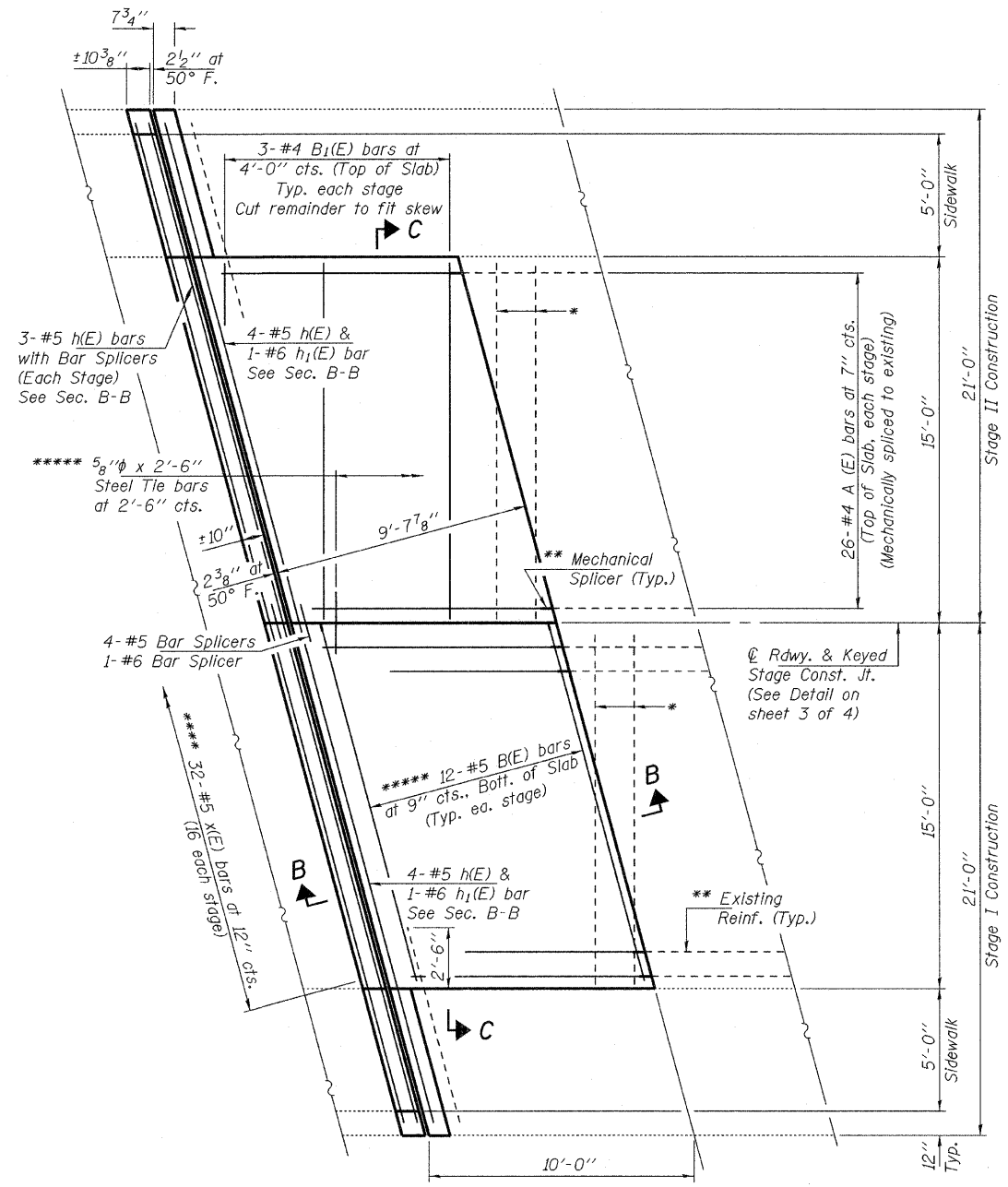


CONCRETE REMOVAL PLAN

Remove Concrete on Approach
Sidewalk to Existing Joint ($\pm 7\frac{1}{2}$ "



BARS A(E) & A₁(E)



CONCRETE REPLACEMENT PLAN

(See Section C-C on sheet 3 of 4
for Reinforcement details not shown)

***** Cost included with Reinforcement Bars, Epoxy Coated

REPAIR DETAILS
U.S. ROUTE 6 OVER GENESEO CREEK
SN 037-0133

DESIGNED	ATH
CHECKED	IJL
DRAWN	Kyle M. Steffen
CHECKED	ATH IJL

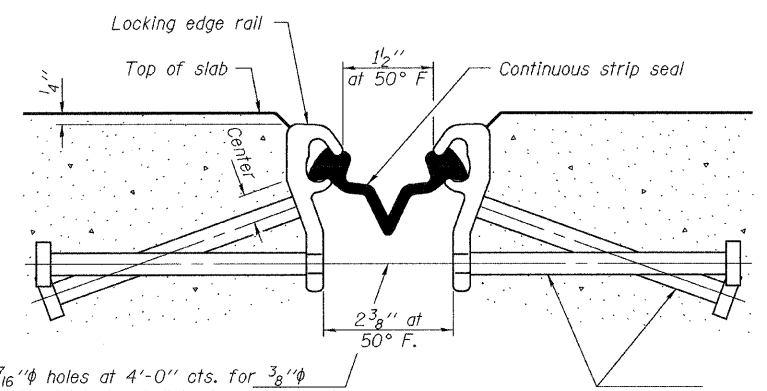
FEBRUARY 16, 2010
EXAMINED *Carl Provey*
ENGINEER OF STRUCTURAL SERVICES
PASSED *Ralph E. Anderson*
ENGINEER OF BRIDGES AND STRUCTURES

- * Existing top reinforcement extending into removal area shall be cleaned, straightened and incorporated into new construction.
- ** Reinforcement shall extend 6" past edge of concrete removal to allow installation of mechanical splicer.
- *** Cut existing rebar from sidewalk area 2'-6" from removal line.
- **** Epoxy grout x(E) bars 9" min. into abutment cap.

SHEET NO. 2	F.A.U. RTE.	SECTION	COUNTY	TOTAL SHEETS	SHEET NO.
	5671	(4B-1)R-M	HENRY	13	7
6 SHEETS	FED. ROAD DIST. NO.		ILLINOIS FED. AID PROJECT		
				CONTRACT NO. 64F97	

STATE OF ILLINOIS
DEPARTMENT OF TRANSPORTATION

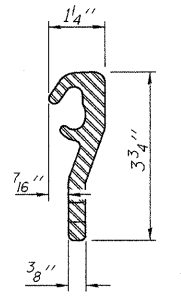
* Omit weld at seal opening.



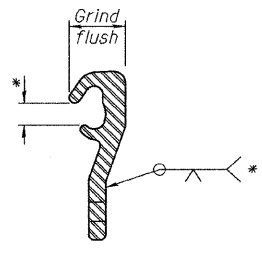
7/16" ϕ holes at 4'-0" cts. for 3/8" ϕ bolts. All bolts shall be burned, sawed, or chipped off flush with the plates after forms are removed, typ.

Place 1/2" ϕ x 6" granular or solid flux filled headed studs conforming to Article 1006.32 of the Std. Specs., automatically end welded at 1'-0" alt. cts.

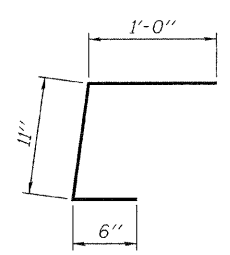
SECTION THRU STRIP SEAL JOINT FOR OVERLAY OVER DECK BEAMS



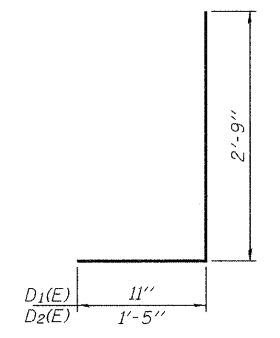
LOCKING EDGE RAIL



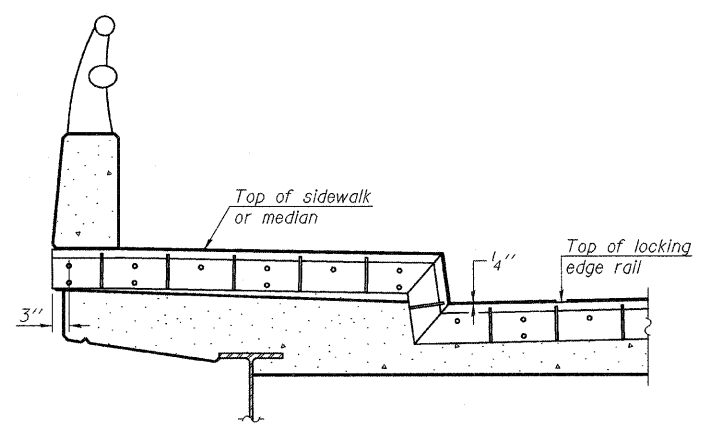
LOCKING EDGE RAIL SPLICE



BAR C(E)

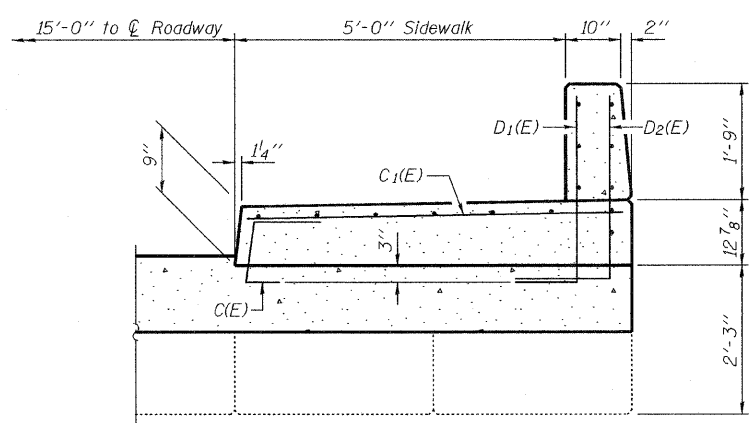


BARS D1(E) & D2(E)



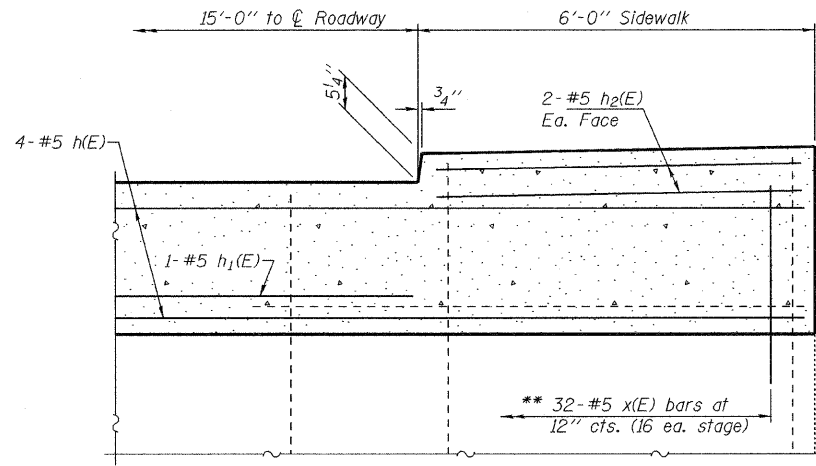
TYPICAL END TREATMENT AT SIDEWALK

Shorter plates with a single row of studs at 12" cts. may be necessary on medians which are shallower than 9". See manufacturer's recommendation.



SECTION THRU DECK SIDEWALK

Place reinforcement along skew



SECTION THRU ABUTMENT SIDEWALK

Place reinforcement along skew

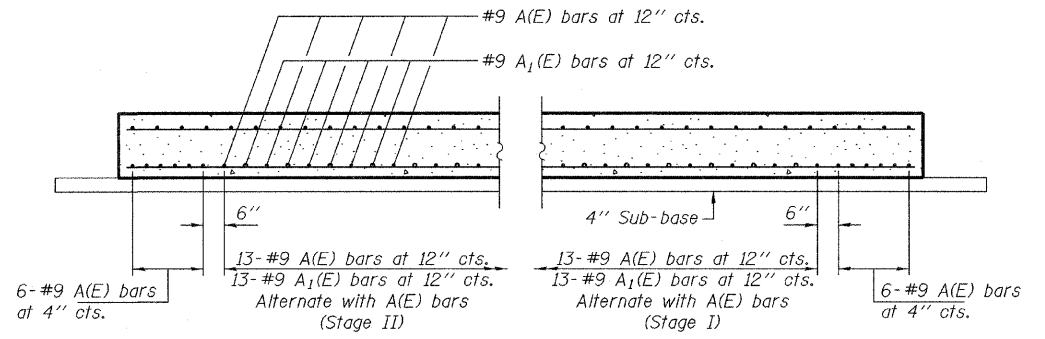
Notes:

The strip seal shall be made continuous and shall have a minimum thickness of 1/4". The configuration of the strip seal shall match the configuration of the Locking Edge Rails. Open or "webbed" strip seal gland configurations are not permitted. The gland shall be sized for a maximum rated movement of 4 inches.

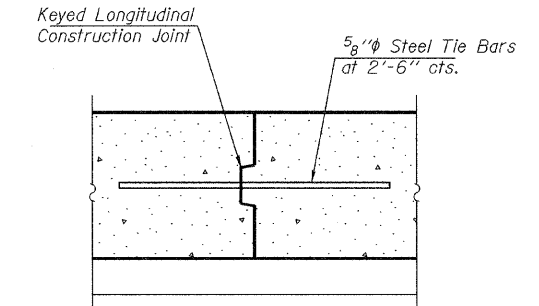
The height and thickness of the Locking Edge Rails shown are minimum dimensions. The actual configuration of the Locking Edge Rails and matching strip seal may vary from manufacturer to manufacturer. Flanged edge rails will not be allowed. Locking Edge Rails may be spliced at slope discontinuities and stage construction joints.

The manufacturer's recommended installation methods shall be followed. The joint opening and deck dimensions detailed on the superstructure are based on a rolled rail expansion joint. If the Contractor elects to use the welded rail expansion joint, the opening and deck dimensions shall be modified according to the dimensions detailed on this sheet. Required modifications shall be made at no additional cost to the State.

All steel components shall be galvanized after fabrication according to Article 520.03 of the Standard Specifications.



SECTION C-C



LONGITUDINAL CONSTRUCTION JOINT

Cost included with Reinforcement Bars, Epoxy Coated

BILL OF MATERIAL

Item	Unit	Total
Preformed Joint Strip Seal	Foot	44

**PREFORMED JOINT STRIP SEAL AND SIDEWALK DETAILS
U.S. ROUTE 6 OVER GENESEO CREEK
SN 037-0133**

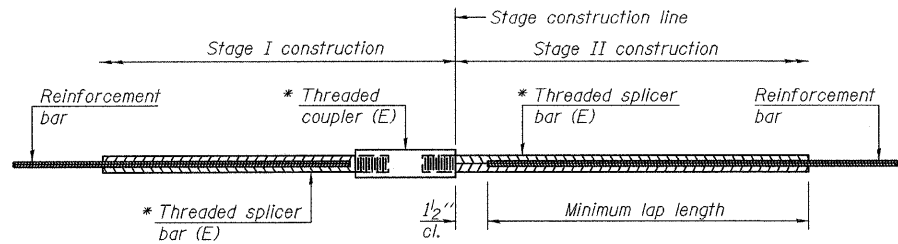
SHEET NO. 3 6 SHEETS	F.A.U. RTE.	SECTION	COUNTY	TOTAL SHEETS	SHEET NO.
	5671	(4B-1)R-M	HENRY	13	8
FED. ROAD DIST. NO.		ILLINOIS FED. AID PROJECT		CONTRACT NO. 64F97	

** Epoxy grout x(E) bars 9" min. into abutment cap.

DESIGNED	ATH
CHECKED	IJL
DRAWN	Kyle M. Steffen
CHECKED	ATH IJL

FEBRUARY 16, 2010
EXAMINED *Carl Henry*
ENGINEER OF STRUCTURAL SERVICES
PASSED *Ralph E. Anderson*
ENGINEER OF BRIDGES AND STRUCTURES

STATE OF ILLINOIS
DEPARTMENT OF TRANSPORTATION



STANDARD BAR SPLICER ASSEMBLY

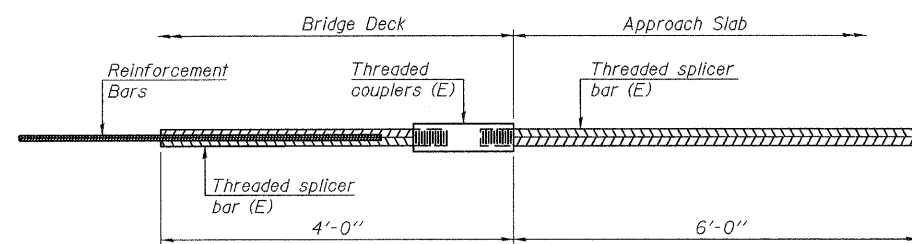
Bar size to be spliced	Minimum Lap Lengths			
	Table 1	Table 2	Table 3	Table 4
3, 4	1'-5"	1'-11"	2'-1"	2'-4"
5	1'-9"	2'-5"	2'-7"	2'-11"
6	2'-1"	2'-11"	3'-1"	3'-6"
7	2'-9"	3'-10"	4'-2"	4'-8"
8	3'-8"	5'-1"	5'-5"	6'-2"
9	4'-7"	6'-5"	6'-10"	7'-9"

Table 1: Black bar, 0.8 Class C
Table 2: Black bar, Top bar lap, 0.8 Class C
Table 3: Epoxy bar, 0.8 Class C
Table 4: Epoxy bar, Top bar lap, 0.8 Class C

Threaded splicer bar length = min. lap length + 1 1/2" + thread length

* Epoxy not required on Bar Splicer Assembly components used in conjunction with black bars.

Location	Bar size	No. assemblies required	Table for minimum lap length
Deck	#5	3	3
Abut./Appr. slab	#5	4	3
Abut./Appr. slab	#6	1	3



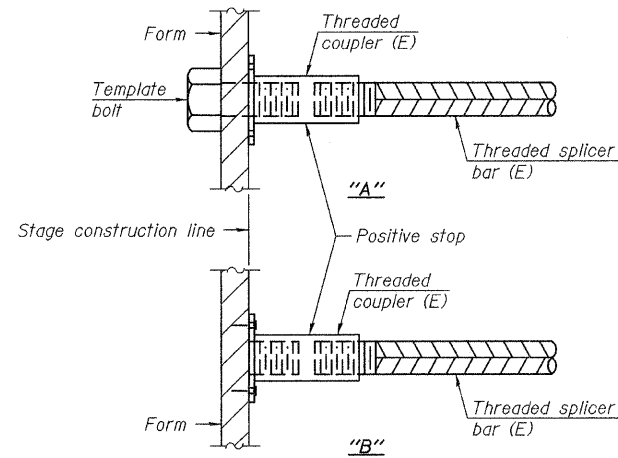
BAR SPLICER ASSEMBLY FOR #5 BAR ON INTEGRAL OR SEMI-INTEGRAL ABUTMENTS

No. required =

DESIGNED	ATH
CHECKED	I.J.L.
DRAWN	Kyle M. Steffen
CHECKED	ATH I.J.L.

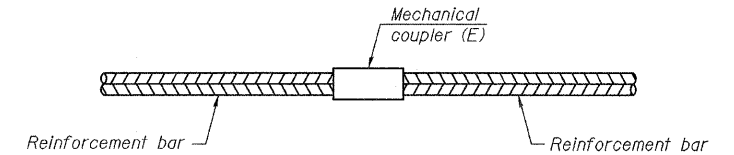
FEBRUARY 16, 2010
EXAMINED *Carl Perry*
ENGINEER OF STRUCTURAL SERVICES
PASSED *Ralph E. Anderson*
ENGINEER OF BRIDGES AND STRUCTURES

BSD-1 11-1-09



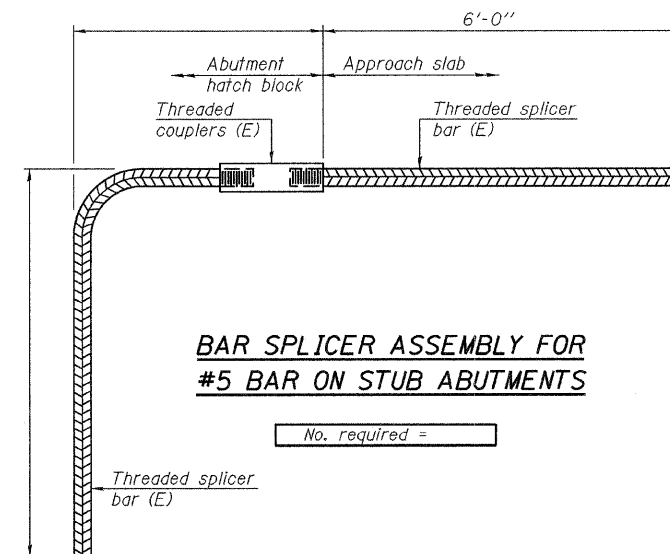
INSTALLATION AND SETTING METHODS

"A": Set bar splicer assembly by means of a template bolt.
"B": Set bar splicer assembly by nailing to wood forms or cementing to steel forms.
(E) : Indicates epoxy coating.



STANDARD MECHANICAL SPLICER

Location	Bar size	No. assemblies required



BAR SPLICER ASSEMBLY FOR #5 BAR ON STUB ABUTMENTS

No. required =

NOTES

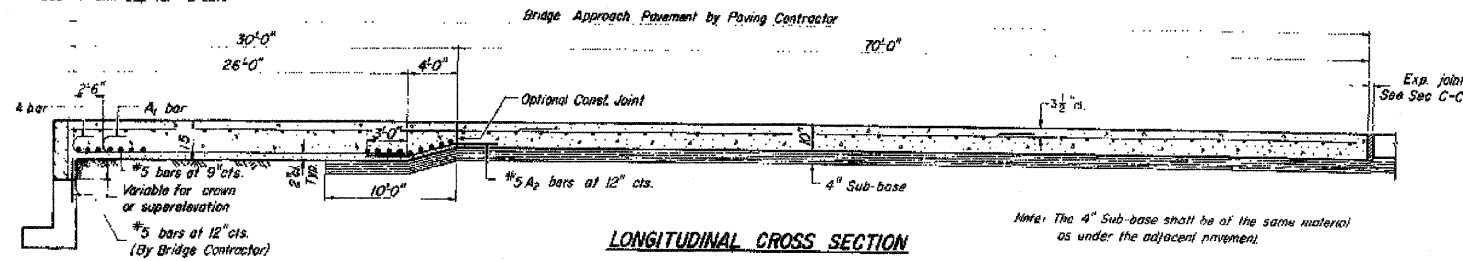
Splicer bars shall be deformed with threaded ends and have a minimum 60 ksi yield strength.
All reinforcement shall be lapped and tied to the splicer bars.
Bar splicer assemblies shall be epoxy coated according to the requirements for reinforcement bars. See Section 508 of the Standard Specifications.
See special provision for Mechanical Splicers.
See approved list of bar splicer assemblies and mechanical splicers for alternatives.

**BAR SPLICER ASSEMBLY DETAILS
U.S. ROUTE 6 OVER GENESEO CREEK
SN 037-0133**

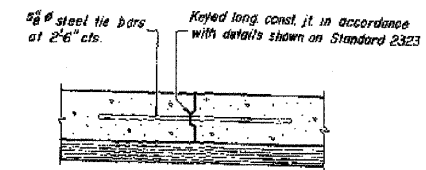
SHEET NO. 4 6 SHEETS	F.A.U. RTE.	SECTION	COUNTY	TOTAL SHEETS	SHEET NO.
	5671	(4B-1)R-M	HENRY	13	9
FED. ROAD DIST. NO.			ILLINOIS FED. AID PROJECT		
			CONTRACT NO. 64F97		

STATE OF ILLINOIS
DEPARTMENT OF TRANSPORTATION

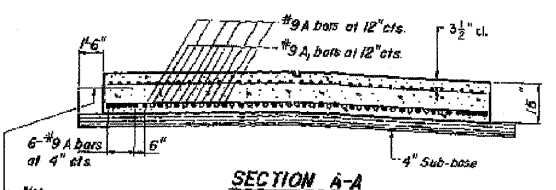
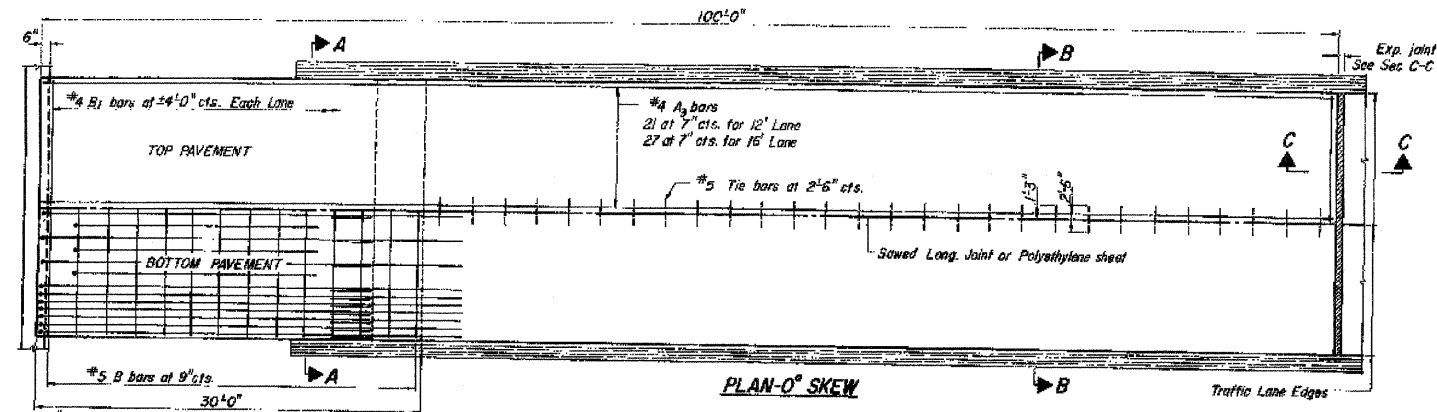
Note: Treat as if #9 bars for min 2" cl. Use 1-4" Min. Lap for #4 bars.
Use 1-6" Min. Lap for #5 bars



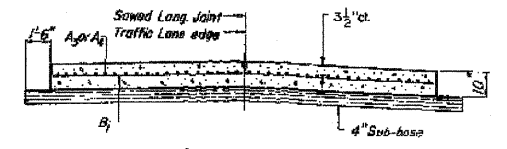
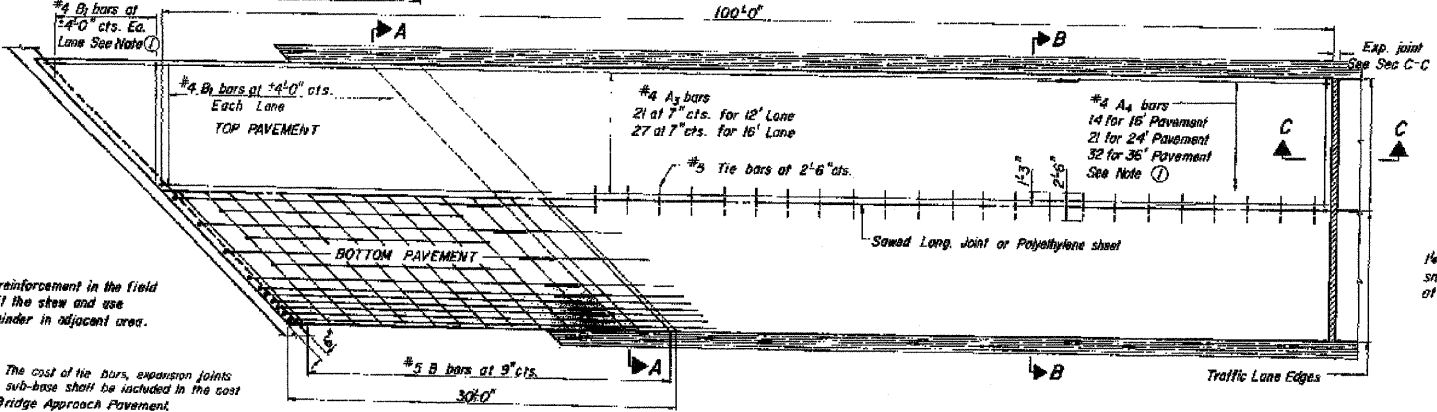
Note: The 4" Sub-base shall be of the same material as under the adjacent pavement.



OPTIONAL LONG CONST JOINT
As approved by the Engineer, the contractor may elect to reduce the widths by use of the Optional Longitudinal Construction Joint shown. Joint shall be located at the edge of Traffic Lane.

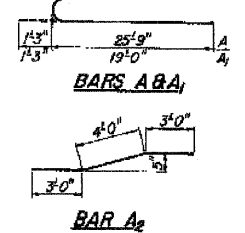
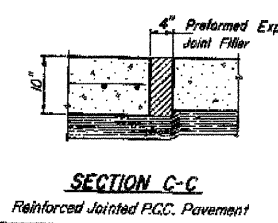
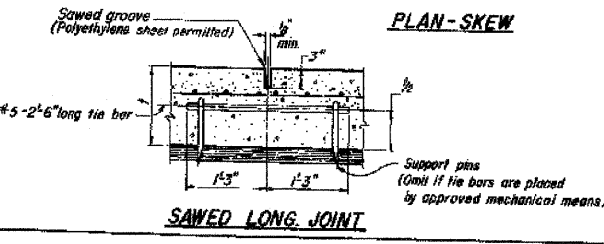


Note: When the road plans show curb and gutter, gutter or bridge approach shoulder pavement adjacent to approach slabs, place 3/4" steel tie bars at 2'-6" centers in accordance with the details for Bulkhead Longitudinal Construction Joint shown on Standard 2323. Cost of the tie bars will be included in the contract unit price for the adjacent item.
Transitions for curb and gutter shall be as shown on the plans.



Finish corners with edge
2" Preformed expansion joint filler
1/4" dia. x 18" long pre-coated smooth dowel bars at 12" cts.
Fill with FAF 3 or 4 if joint filler conforms to Art. 715.05 or 715.06 of the Standard Specifications.
2" x 3" or 1" min. if tapered
Pinched stop
Approved dowel bar assembly with cap.

1) Cut reinforcement in the field to fit the skew and use remainder in adjacent area.
Note: The cost of tie bars, expansion joints and sub-base shall be included in the cost of Bridge Approach Pavement.



SECTION C-C
Continuous Reinforced P.C.C. Pavement

BRIDGE APPROACH PAVEMENT

(Sheet 1 of 2)
STANDARD 2353-4

Illinois Department of Transportation
PASSED: [Signature] 2/16/2010
APPROVED: [Signature] 2/16/2010
Engineer of Design

DESIGNED	ATH
CHECKED	IJL
DRAWN	Kyle M. Steffen
CHECKED	ATH IJL

FEBRUARY 16, 2010
EXAMINED: [Signature]
PASSED: [Signature]
ENGINEER OF BRIDGES AND STRUCTURES

FOR INFORMATION ONLY

REPAIR DETAILS
U.S. ROUTE 6 OVER GENESEO CREEK
SN 037-0133

SHEET NO. 5 6 SHEETS	F.A.U. RTE.	SECTION	COUNTY	TOTAL SHEETS	SHEET NO.
	5671	(4B-1)R-M	HENRY	13	10
FED. ROAD DIST. NO.			ILLINOIS FED. AID PROJECT		
CONTRACT NO. 64F97					

STATE OF ILLINOIS
DEPARTMENT OF TRANSPORTATION

QUANTITIES FOR 100-FOOT APPROACH SLAB

Skew Angle	Bottom Reinforcement			Top Reinforcement				Total Weight bars-lbs.
	#5 B bars No.	Length	A	#4 A ₃ bars No.	Length	#4 A ₄ bars No.	Length	

Skew Angle	Bottom Reinforcement			Top Reinforcement				Total Weight bars-lbs.
	#5 B bars No.	Length	A	#4 A ₃ bars No.	Length	#4 A ₄ bars No.	Length	

Skew Angle	Bottom Reinforcement			Top Reinforcement				Total Weight bars-lbs.
	#5 B bars No.	Length	A	#4 A ₃ bars No.	Length	#4 A ₄ bars No.	Length	

16-FOOT WIDTH PAVEMENT

Skew Angle	#5 B bars No.	Length	A	#4 A ₃ bars No.	Length	#4 A ₄ bars No.	Length	Total Weight bars-lbs.
0°	40	15'-6"		81	34'-3"	—	—	5980
5°	40	15'-7"		81	34'-0"	14	3'-11"	6010
10°	40	15'-9"		81	33'-10"	14	5'-8"	6020
15°	40	16'-1"		81	33'-7"	14	6'-5"	6030
20°	40	16'-6"		81	33'-5"	14	7'-9"	6050
25°	40	17'-1"		81	33'-2"	14	9'-2"	6070
30°	40	17'-11"		81	32'-11"	14	10'-9"	6110
35°	40	18'-11"		81	32'-7"	14	12'-6"	6150
40°	40	20'-3"		81	32'-3"	14	14'-8"	6200
45°	40	21'-11"		81	31'-11"	14	16'-8"	6280
50°	40	24'-1"		81	31'-5"	14	19'-4"	6370
55°	40	27'-0"		81	30'-11"	14	22'-8"	6490
60°	40	31'-0"		81	30'-2"	14	26'-11"	6660

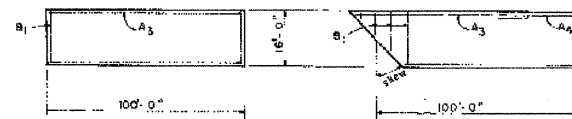
24-FOOT WIDTH PAVEMENT

Skew Angle	#5 B bars No.	Length	A	#4 A ₃ bars No.	Length	#4 A ₄ bars No.	Length	Total Weight bars-lbs.
0°	40	23'-6"		126	34'-3"	—	—	8840
5°	40	23'-7"		126	33'-10"	21	4'-9"	8880
10°	40	23'-10"		126	33'-6"	21	6'-11"	8890
15°	40	24'-0"		126	33'-2"	21	9'-1"	8910
20°	40	25'-0"		126	32'-9"	21	11'-5"	8940
25°	40	25'-11"		126	32'-4"	21	13'-10"	8990
30°	40	27'-2"		126	31'-11"	21	16'-6"	9030
35°	40	28'-8"		126	31'-5"	21	19'-6"	9090
40°	40	30'-8"		126	30'-10"	21	22'-10"	9170
45°	40	33'-3"		126	30'-3"	21	26'-8"	9290
50°	40	37'-1"		126	29'-3"	21	31'-3"	9490
55°	80	41'-4"		126	28'-8"	21	36'-11"	9680
60°	80	47'-4"		126	27'-3"	42	42'-9"	9940

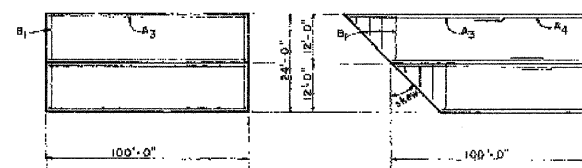
36-FOOT WIDTH PAVEMENT

Skew Angle	#5 B bars No.	Length	A	#4 A ₃ bars No.	Length	#4 A ₄ bars No.	Length	Total Weight bars-lbs.
0°	40	35'-6"		189	34'-3"	—	—	13040
5°	40	35'-9"		189	33'-8"	32	5'-10"	13090
10°	40	36'-0"		189	33'-2"	32	9'-0"	13110
15°	80	36'-4"		189	32'-8"	32	12'-4"	13230
20°	80	36'-10"		189	32'-0"	32	15'-9"	13260
25°	80	37'-7"		189	31'-5"	32	19'-6"	13330
30°	80	38'-11"		189	30'-9"	32	23'-6"	13410
35°	80	40'-8"		189	30'-0"	32	27'-10"	13510
40°	80	43'-2"		189	29'-2"	32	32'-10"	13630
45°	80	46'-2"		189	28'-3"	64	38'-0"	13840
50°	80	50'-0"		189	27'-1"	64	44'-6"	14050
55°	80	54'-8"		189	25'-8"	64	51'-9"	14330
60°	80	61'-7"		189	23'-10"	64	59'-2"	14710

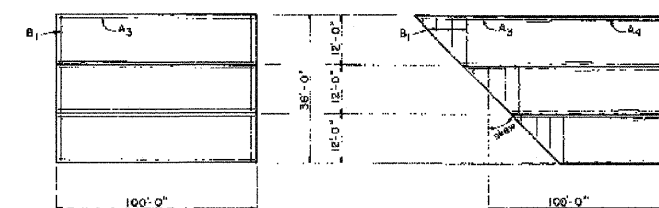
TOP OF SLAB BAR ARRANGEMENT



TOP OF SLAB BAR ARRANGEMENT



TOP OF SLAB BAR ARRANGEMENT



Illinois Department of Transportation
PASSED: [Signature] 29... 1979
APPROVED: [Signature] 29... 1979
Engineer of Design

BRIDGE APPROACH PAVEMENT

(Sheet 2 of 2)
STANDARD 2353-4

DESIGNED	ATH
CHECKED	IJL
DRAWN	Kyle M. Steffen
CHECKED	ATH IJL

FEBRUARY 16, 2010
EXAMINED: [Signature]
PASSED: [Signature]
ENGINEER OF BRIDGES AND STRUCTURES

FOR
INFORMATION
ONLY

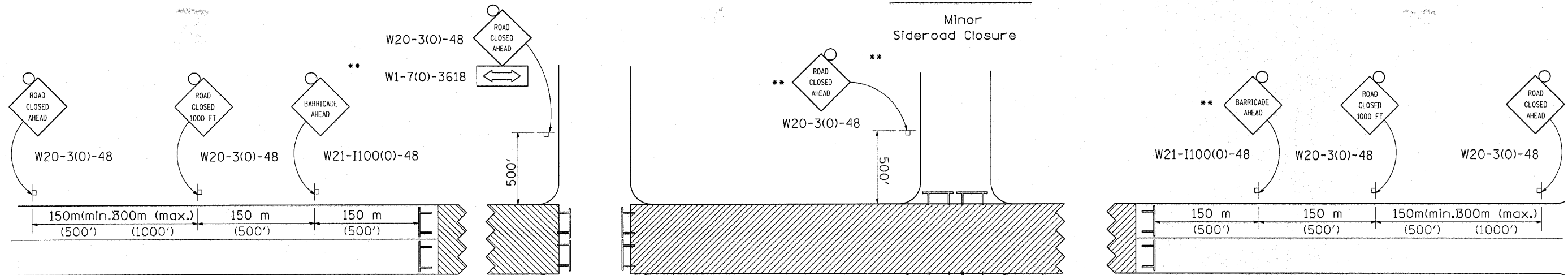
REPAIR DETAILS
U.S. ROUTE 6 OVER GENESEO CREEK
SN 037-0133

SHEET NO. 6 6 SHEETS	F.A.U. RTE.	SECTION	COUNTY	TOTAL SHEETS	SHEET NO.
	5671	(4B-1)R-M	HENRY	13	11
FED. ROAD DIST. NO. ILLINOIS			FED. AID PROJECT		
			CONTRACT NO. 64F97		

TRAFFIC CONTROL FOR ROAD CLOSURE

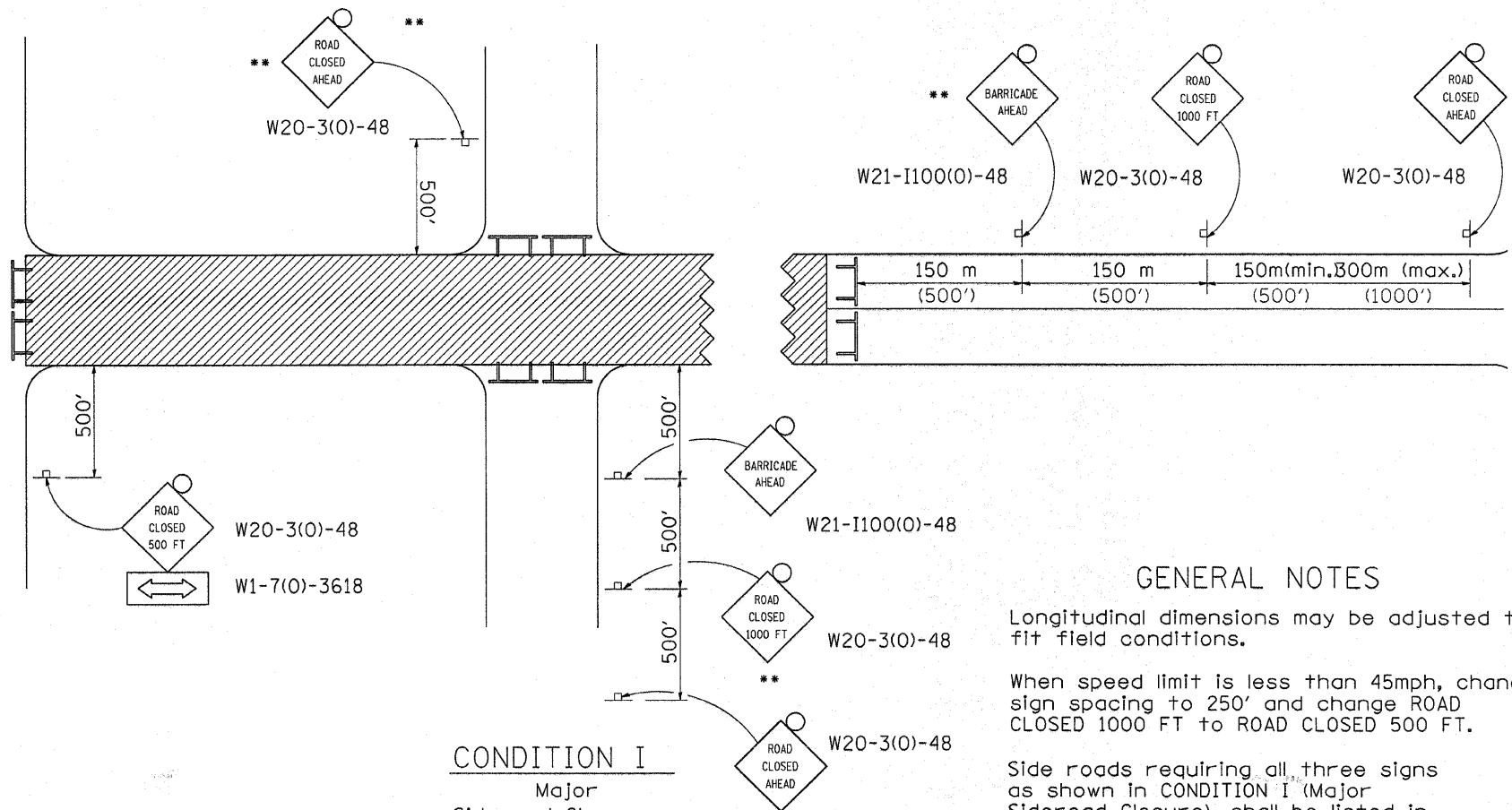
CONDITION II

Minor Sideroad Closure

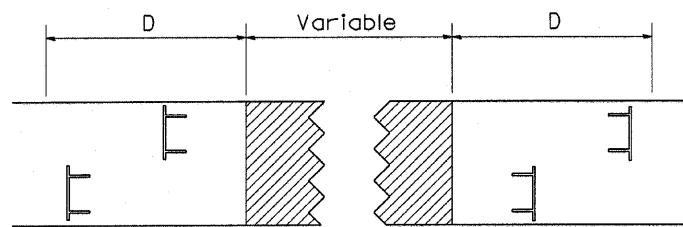


CONDITION I

Major Sideroad Closure

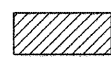




ROAD CLOSED TO THRU TRAFFIC BARRICADE SET UP



Type III Barricades and R11-4-4830 signs shall be as shown in "Road Closed To All Thru Traffic" detail on Highway Standard 701901. If the distance "D" exceeds 600 m (2000') an additional set of barricades and R11-4-4830 shall be placed at each end of the work area.

SYMBOLS

-  Work area
-  Type III Barricade with Flashers
-  Sign with flashing light

GENERAL NOTES

Longitudinal dimensions may be adjusted to fit field conditions.

When speed limit is less than 45mph, change sign spacing to 250' and change ROAD CLOSED 1000 FT to ROAD CLOSED 500 FT.

Side roads requiring all three signs as shown in CONDITION I (Major Sideroad Closure), shall be listed in the special provision.

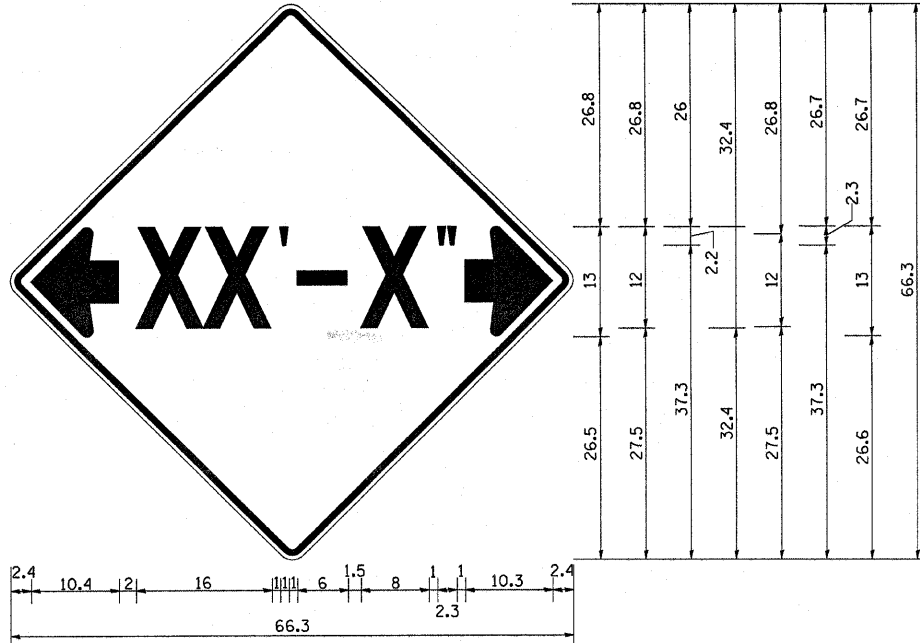
** Where local access is to be maintained, barricades are to be set up as shown in Road Closed to thru traffic. Type III Barricades and R11-2-4830 signs shall be as shown in "Road Closed To All Traffic" detail on Highway Standard 701901.

All dimensions are in millimeters (inches) unless otherwise shown.

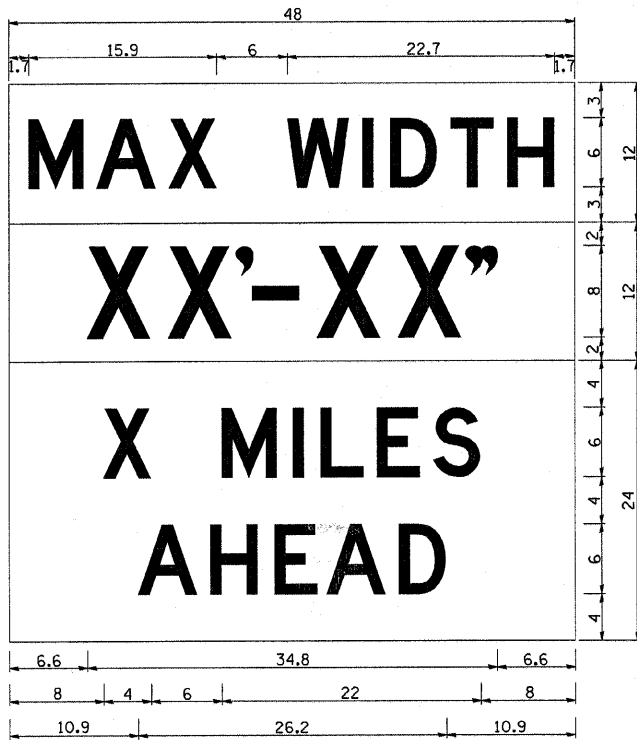
TYPICAL APPLICATION FOR ROAD CLOSURE

FILE NAME =	USER NAME = linkdj	DESIGNED -	REVISED - 1-11-08	STATE OF ILLINOIS DEPARTMENT OF TRANSPORTATION	REGION 2 / DISTRICT 2 STANDARD		F.A.U. RTE.	SECTION	COUNTY	TOTAL SHEETS	SHEET NO.
D:\BR\CADD\plans\Henry County\0370133\PLANeng.dgn	DRAWN -	REVISED -	5671				48-08-M	HOOCY	13	12	
PLOT SCALE = 50.0000' / IN.	CHECKED -	REVISED -	CONTRACT NO. 64F97								
PLOT DATE = Tue Jan 19 09:25:53 2010	DATE -	REVISED -	FED. ROAD DIST. NO. ILLINOIS FED. AID PROJECT								

INFORMATIONAL WARNING SIGN (FOR NARROW TRAVEL LANES)



NOTES
 W12-2 - Horizontal Clearance Sign
 48.0" across sides, 1.9" Radius,
 0.8" Border, 0.5" Indent, Black on
 Orange; Standard Arrow Custom
 10.4" X 8.1" 180° Black 11 Inch
 D Series Lettering; Standard Arrow
 Custom 10.4" X 8.1" 0°



W12-1103 (Width is 80);
 No border, Black on White;
 [MAX WIDTH] D;

No border, Black on Orange;
 [XX'-XX''] D;

No border, Black on White;
 [X MILES] D; [AHEAD] D;

All work to furnish and install these signs shall be included in the cost of the Traffic Control Standards and shall not be paid for separately.

ALL DIMENSIONS ARE IN INCHES UNLESS OTHERWISE NOTED.

STOP LINE SIGN FOR TEMPORARY SIGNALS



SIZE: 600(24) x 600(24)
 100(4) CAPITAL LETTERS - BLACK
 13 (1/2) BORDER - BLACK
 WHITE REFLECTIVE - TYPE AP
 HIGH INTENSITY PRISMATIC SHEETING

GENERAL NOTE:

THIS SIGN SHALL BE INSTALLED AT THE STOP LINE AS DIRECTED BY ENGINEER.

ALL DIMENSIONS ARE IN MILLIMETERS (INCHES) UNLESS OTHERWISE NOTED.

REVISED - 1-22-07

INFORMATIONAL WARNING SIGNS (FOR NARROW TRAVEL LANES) 39.2

STOP LINE SIGN FOR TEMPORARY SIGNALS 99.4

REVISIONS = 5-15-09 G:\BRV\CADD plans\Henry County\0378133\PL	USER NAME = lmkdj ANeng.dgn	DESIGNED - DRAWN -	REVISED - REVISED - REVISED -	STATE OF ILLINOIS DEPARTMENT OF TRANSPORTATION	REGION 2 / DISTRICT 2 STANDARD	F.A.U. RTE. 5671	SECTION (4B-1)R-M	COUNTY Henry	TOTAL SHEETS 13	SHEET NO. 13
PLOT SCALE = 50,0000' / IN. PLOT DATE = Tue Jan 19 09:25:59 2010						CHECKED - DATE -	SCALE: _____ SHEET NO. _____ OF _____ SHEETS STA. _____ TO STA. _____	CONTRACT NO. 64F97 ILLINOIS FED. AID PROJECT		