

STATE OF ILLINOIS
 DEPARTMENT OF TRANSPORTATION
 DIVISION OF HIGHWAYS

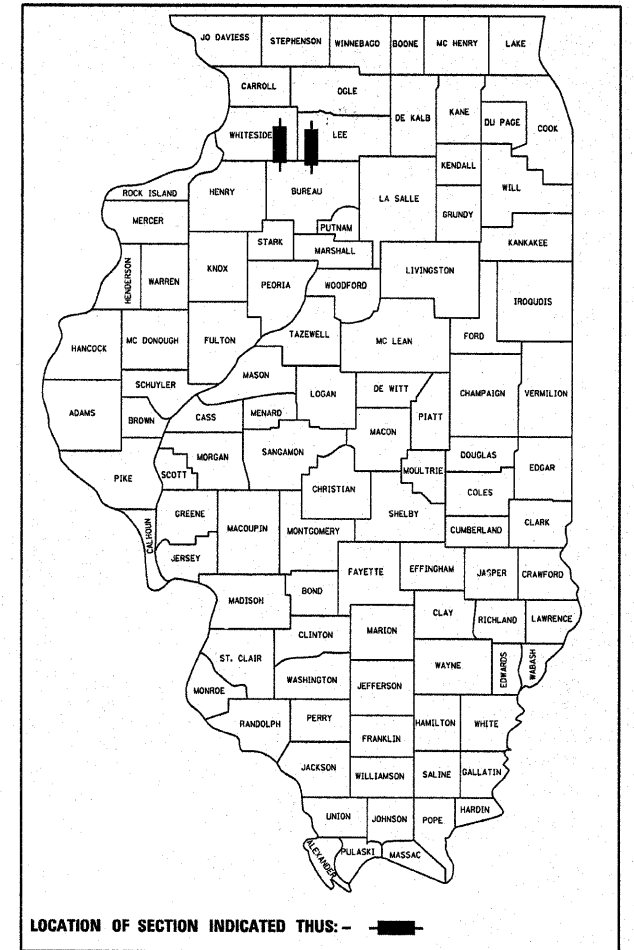
**PROPOSED
 HIGHWAY PLANS**

FAP ROUTE 316 (IL 26) & FAS ROUTE 200 (IL 172)
 SECTION (102BR-1)M-2 & (141BR)M
 BRIDGE REPAIR
 LEE & WHITESIDE COUNTIES
 C-92-101-10

F.A. RTE.	SECTION	COUNTY	TOTAL SHEETS	SHEET NO.
•	(102BR-1)M-2 & (141BR)M	**	7	1
ILLINOIS		CONTRACT NO. 64G10		

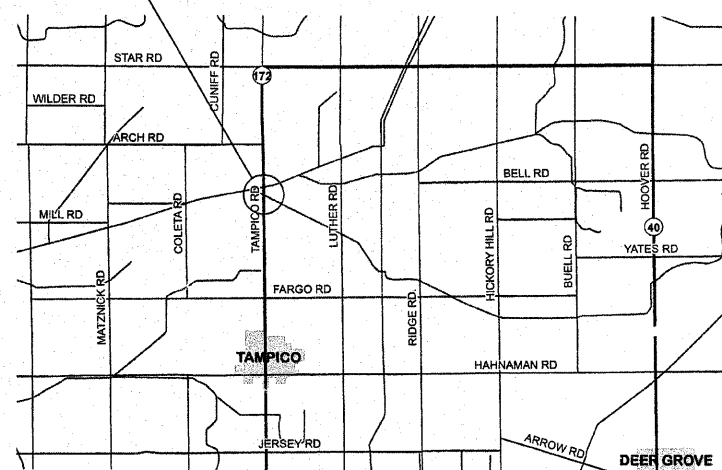
* FAP 316 (IL 26) & FAS 200 (IL 172)

D-92-056-10

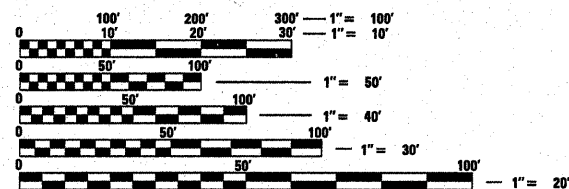
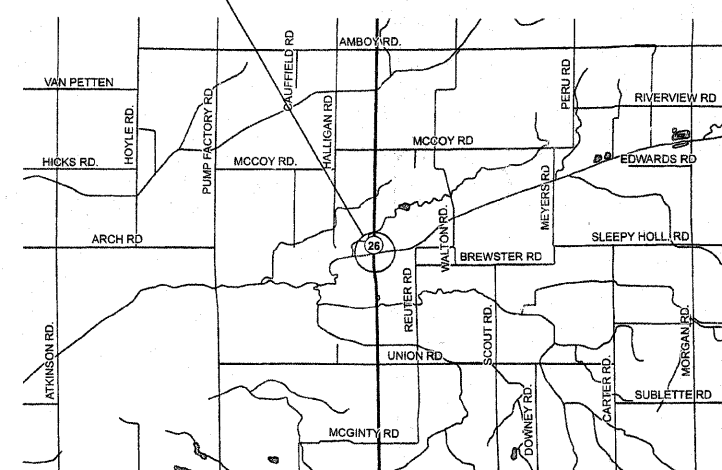


FOR INDEX OF SHEETS, SEE SHEET NO. 3

Structure No. 098-0044



Structure No. 052-0026



FULL SIZE PLANS HAVE BEEN PREPARED USING STANDARD ENGINEERING SCALES. REDUCED SIZED PLANS WILL NOT CONFORM TO STANDARD SCALES. IN MAKING MEASUREMENTS ON REDUCED PLANS, THE ABOVE SCALES MAY BE USED.

J.U.L.I.E.
 JOINT UTILITY LOCATION INFORMATION FOR EXCAVATION
 1-800-892-0123
 OR 811

PROJECT ENGINEER: MAHMOUD ETEMADI 815/284-5393

GROSS LENGTH = 131.15 FT. = 0.025 MILE
 NET LENGTH = 131.15 FT. = 0.025 MILE

CONTRACT NO. 64G10

STATE OF ILLINOIS
 DEPARTMENT OF TRANSPORTATION
 DIVISION OF HIGHWAYS

SUBMITTED Jan 20 2010
George F. Ryan
 DEPUTY DIRECTOR OF HIGHWAYS, REGION ENGINEER

March 9 2010
Scott E. Stitt, P.E.
 ASSISTING ENGINEER OF DESIGN AND ENVIRONMENT

March 19 2010
Christine M. Reed
 DIRECTOR OF HIGHWAYS, CHIEF ENGINEER

PRINTED BY THE AUTHORITY
 OF THE STATE OF ILLINOIS

SUMMARY OF QUANTITIES

FAS 200(IL 172) FAP 316(IL 26) 100% State
 WHITESIDE CO. LEE CO. SFTY-2A

Paycode	Description	Units	Quantity SN 098-0044	Quantity SN 052-002	Total Quantity
50500405	FURNISHING AND ERECTING STRUCTURAL STEEL	POUND	36,710	12,550	49,260
67100100	MOBILIZATION	L SUM	0.5	0.5	1
70100450	TRAFFIC CONTROL AND PROTECTION, STANDARD 701201	L SUM	0.5	0.5	1

* FAP Route 316 (IL 26) & FAS Route 200 (IL 172)
 ** Lee & Whiteside

FILE NAME =	USER NAME = linkdj	DESIGNED -	REVISED -	STATE OF ILLINOIS DEPARTMENT OF TRANSPORTATION	Summary of Quantities	F.A. RTE.	SECTION	COUNTY	TOTAL SHEETS	SHEET NO.
G:\BRY\CADD plans\Various Counties\64G10	2010 deck beam supports\PLANeng.dgn	DRAWN -	REVISED -			•	(102BR-1)M-2 & (141BR)M	**	7	2
	PLOT SCALE = 50.0000' / IN.	CHECKED -	REVISED -			CONTRACT NO. 64G10				
	PLOT DATE = Wed Jan 20 07:26:19 2010	DATE -	REVISED -			ILLINOIS FED. AID PROJECT				
				SCALE: _____	SHEET NO. ___ OF ___ SHEETS	STA. _____ TO STA. _____				

GENERAL NOTES

The final top four inches of soil in any right-of-way area disturbed by the Contractor must be capable of supporting vegetation. The soil must be from the A horizon (zero to 2' deep) of soil profiles of local soils.

All Borrow/Waste/Use sites must be approved by the Department prior to removing any material from the project or initiating any earthmoving activities, including temporary stockpiling outside the limits of construction.

The Contractor shall seed all disturbed areas within the project limits. Seeding Class 4 or 2A shall be used, except in front of properties where the grass will be mowed, then use Seeding, Class 1. Class 2A shall be used on front slopes and ditch bottoms. Class 4 shall be used behind Type A gutter, on all backslopes and areas behind the backslope, and beyond the toe of front slope on fill sections without ditches. This work will be included in the contract unit price per Pound for FURNISHING AND ERECTING STRUCTURAL STEEL.

Fertilizer shall be applied to all disturbed areas and incorporated into the seedbed prior to seeding or placement of sod at the rate specified in Sections 250 and 252 of the Standard Specifications. This work shall be included in the cost of FURNISHING AND ERECTING STRUCTURAL STEEL.

Mulch Method II shall be applied over all seeded areas. This shall be included in the cost of the FURNISHING AND ERECTING STRUCTURAL STEEL.

The Contractor shall be responsible for protecting utility property during construction operations as outlined in Article 107.31 of the Standard Specifications. A minimum of 48 hours advance notice is required for non-emergency work. The JULIE number is 800-892-0123.

No Stream Permits have been procured for this project. None are required from the Regulatory Agencies as long as there is no debris falling or being placed into the stream or the compromising of the dike (if applicable) will not be allowed. If the contractor chooses to use an alternate/modified construction method from the aforementioned, they will be responsible for obtaining the proper permits. Absolutely no construction activities will take place without the proper permits being secured.

STANDARDS

- 701001-02 Off-Road Operations, 2L, 2W, More Than 4.5 m (15') Away
- 701006-03 Off-Road Operations, 2L, 2W, 4.5 m (15') to 600 mm (24") From Pavement Edge
- 701201-03 Lane Closure, 2L, 2W, Day Only, for Speeds > 45 MPH
- 701301-03 Lane Closure, 2L, 2W, Short Time Operations
- 701901-01 Traffic Control Devices

INDEX OF SHEETS

1. Cover Sheet
2. Summary of Quantities
3. General Notes, Standards, Index of Sheets
Bridge Repair Plans Structure 052-0026
4. Plan and Elevation
5. Repair Details
Bridge Repair Plans Structure 098-0044
6. Plan and Elevation
7. Repair Details

* FAP Route 316 (IL 26) & FAS Route 200 (IL 172)
** Lee & Whiteside

FILE NAME =	USER NAME = lmkdj	DESIGNED -	REVISED -	STATE OF ILLINOIS DEPARTMENT OF TRANSPORTATION	GENERAL NOTES, INDEX OF SHEETS STANDARDS	F.A. RTE.	SECTION	COUNTY	TOTAL SHEETS	SHEET NO.	
G:\BRV\CADD plans\Various Counties\64G10	2010 desk beam supports\PLANeng.dgn	DRAWN -	REVISED -			•	(102BR-1M-2 & 141BRM	**	7	3	
	PLOT SCALE = 50.0000' / IN.	CHECKED -	REVISED -			CONTRACT NO. 64G10					
	PLOT DATE = Wed Jan 20 07:26:31 2010	DATE -	REVISED -			ILLINOIS FED. AID PROJECT					

SCALE: _____ SHEET NO. ____ OF _____ SHEETS STA. _____ TO STA. _____

STATE OF ILLINOIS
DEPARTMENT OF TRANSPORTATION

* Other sections meeting the minimum section modulus shown may be used, subject to approval by the Bureau of Bridges and Structures. The maximum girder depth provided shall be 36" for span 2 & 30" for span 3.

GENERAL NOTES

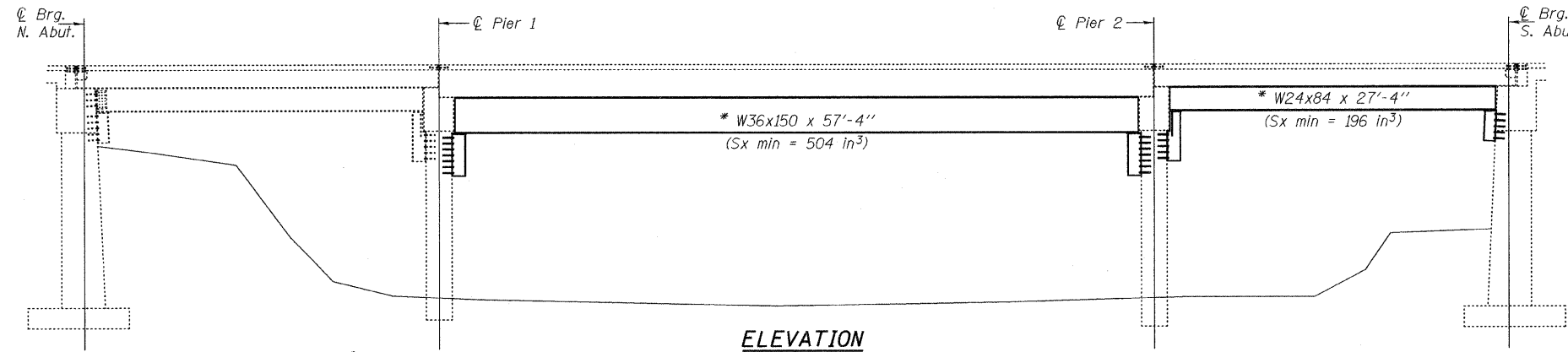
All structural steel shall conform to AASHTO Classification M-270 Gr. 36, unless otherwise noted.

Plan dimensions and details relative to existing plans are subject to nominal construction variations. The Contractor shall field verify existing dimensions and details affecting new construction and make necessary approved adjustments prior to construction or ordering of materials. Such variations shall not be cause for additional compensation for a change in scope of the work, however, the Contractor will be paid for the quantity actually furnished at the unit price bid for the work.

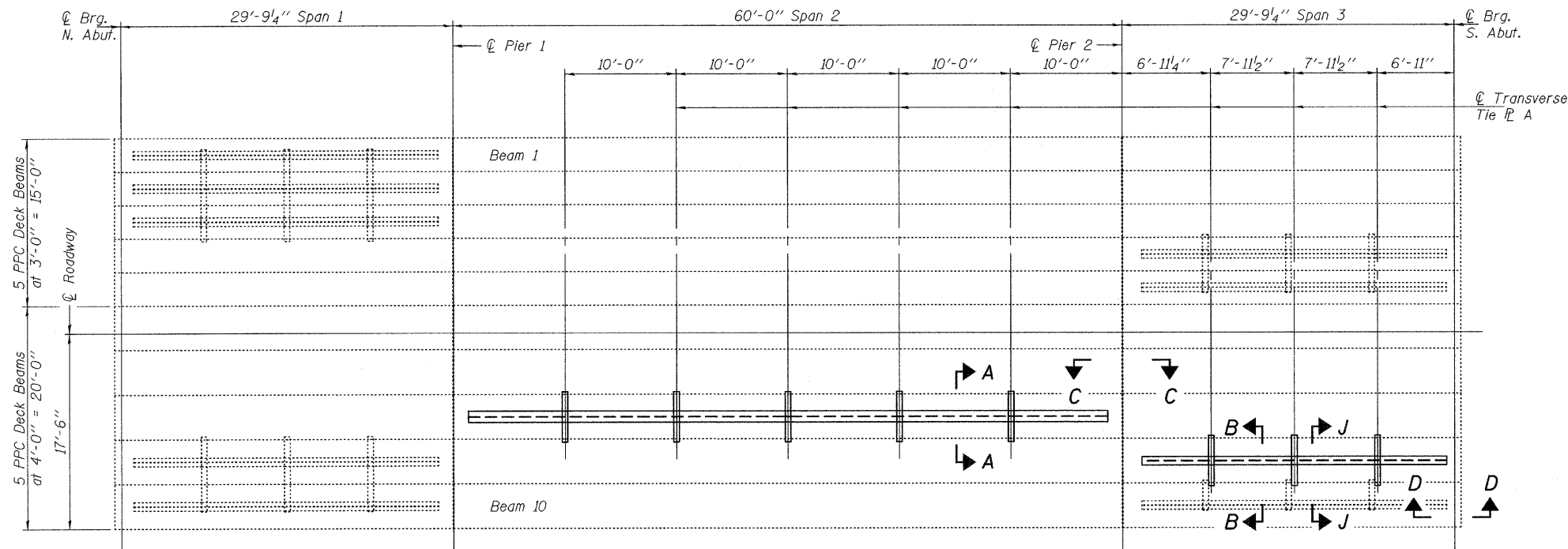
See Section 584 of the Standard Specifications for Epoxy Grouting of Threaded Rods. The cost of epoxy grouting threaded rods shall be included with Furnishing and Erecting Structural Steel.

The Contractor has the option of using used steel. See special provisions. The contractor is advised that the existing PPC Deck Beams are in a deteriorated condition with reduced load carrying capacity. It is the contractors responsibility to account for the condition of the beams when developing construction procedures.

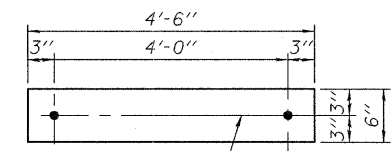
If the contractor's procedure for placement of beams involves placement of cranes or other heavy equipment on the bridge, a detailed procedure shall be submitted to the Engineer for approval. The procedure shall include calculations, prepared and sealed by an Illinois Licensed Structural Engineer, verifying that the equipment and procedure used will not overstress the existing beams. To distribute load to multiple beams and protect the existing surface, in all cases a double layer mat of heavy timbers shall be used at all times under crane tracks or wheels and any outriggers in the down position. If necessary, shims shall be used under the crane mat to ensure uniform contact with the underlying beams.



ELEVATION



PLAN



TRANSVERSE TIE R A
(8 Required)

TOTAL BILL OF MATERIAL

ITEM	UNIT	QUANTITY
Furnishing and Erecting Structural Steel	Pound	12550

PLAN AND ELEVATION

F.A.P. RT. 316
SN 052-0026

DESIGNED *Victor H. Veliz*
CHECKED *Rain*
DRAWN *baliva*
CHECKED *VHV*

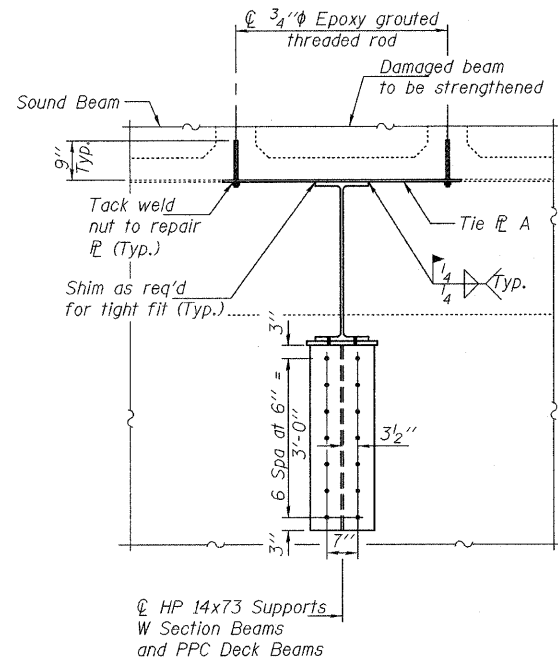
FEBRUARY 16, 2010
EXAMINED *[Signature]*
PASSED *[Signature]*



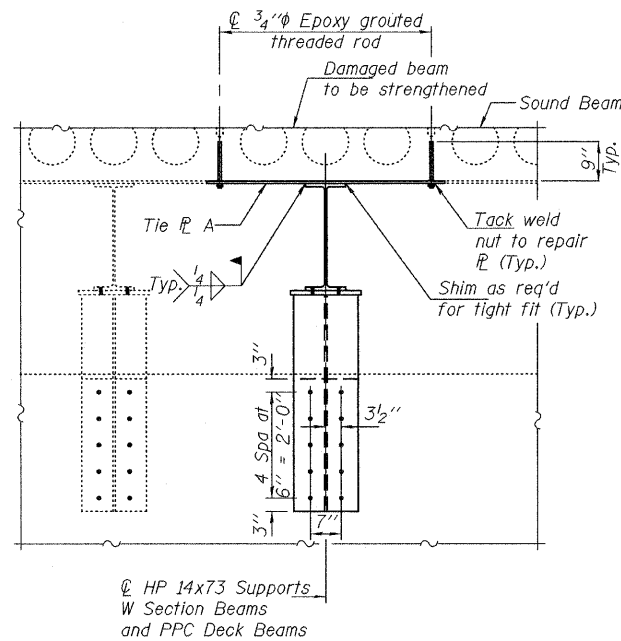
Expires: November 30, 2010

SHEET NO. 1	F.A.P. RTE.	SECTION	COUNTY	TOTAL SHEETS	SHEET NO.
2 SHEETS	316	(102BR-1)M-2 & (141BR)M	LEE	7	4
			CONTRACT NO. 64G10		
ILLINOIS FED. AID PROJECT					

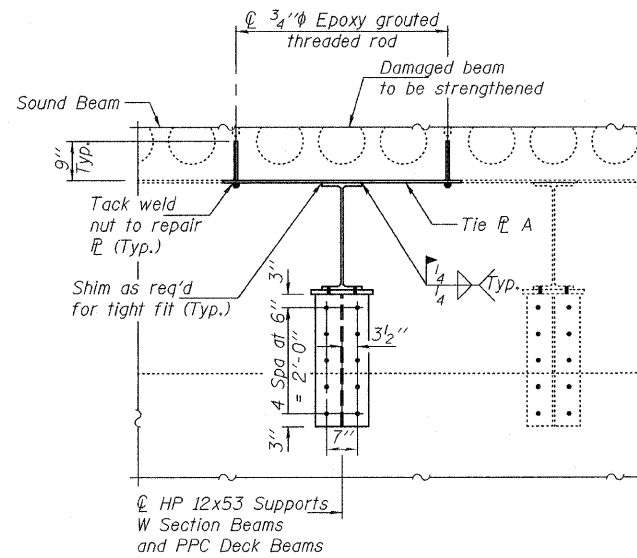
STATE OF ILLINOIS
DEPARTMENT OF TRANSPORTATION



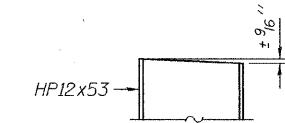
SECTION A-A



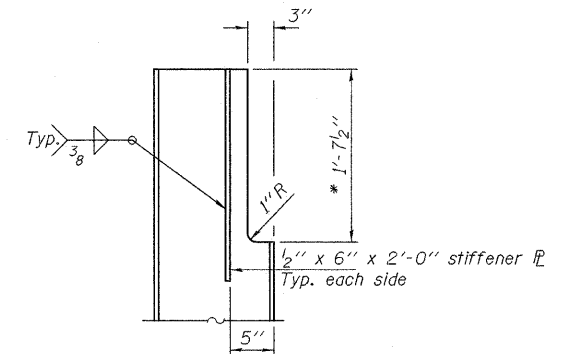
SECTION B-B



SECTION J-J

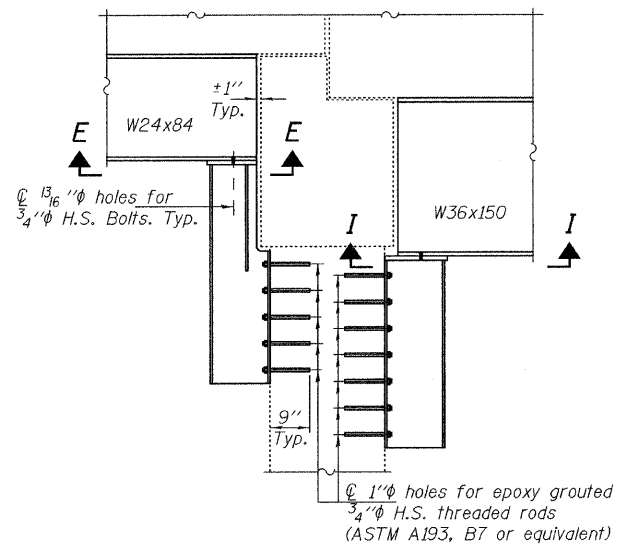


SLOPE CUT AT ABUTMENTS

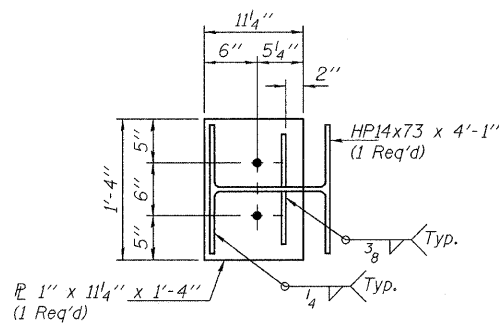


NOTCH AND STIFFENER DETAIL

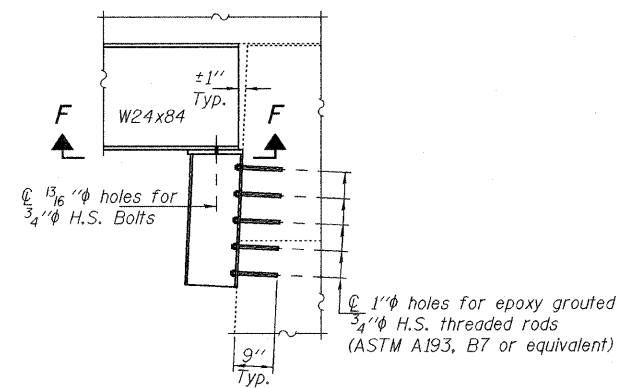
* This dimension can be reduced if existing field conditions allow it.



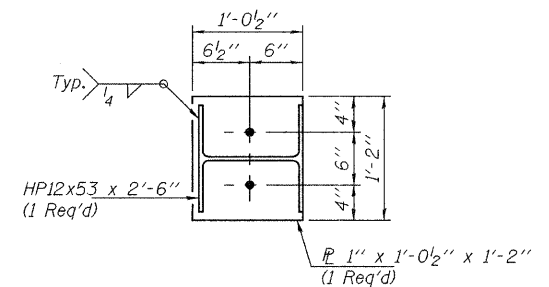
SECTION C-C



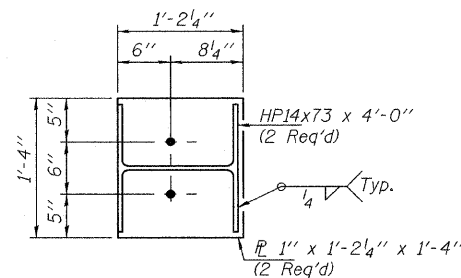
SECTION E-E



SECTION D-D



SECTION F-F



SECTION I-I

DESIGNED	VHV
CHECKED	DAB
DRAWN	ballva
CHECKED	VHV DAB

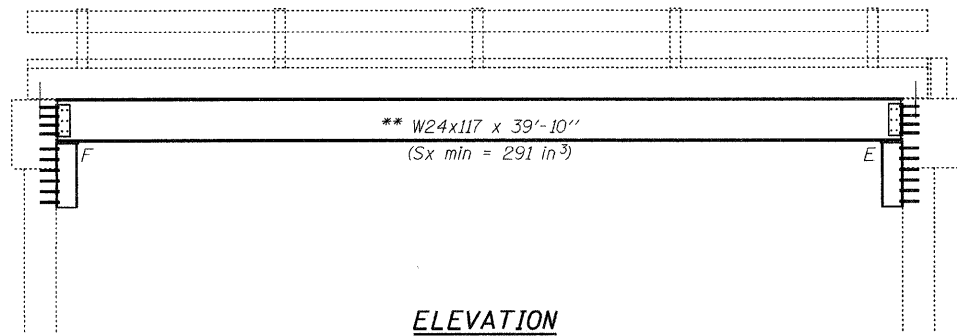
FEBRUARY 16, 2010
EXAMINED *Carl Provey*
ENGINEER OF STRUCTURAL SERVICES
PASSED *Ralph E. Anderson*
ENGINEER OF BRIDGES AND STRUCTURES

REPAIR DETAILS
F.A.P. RT. 316
SN 052-0026

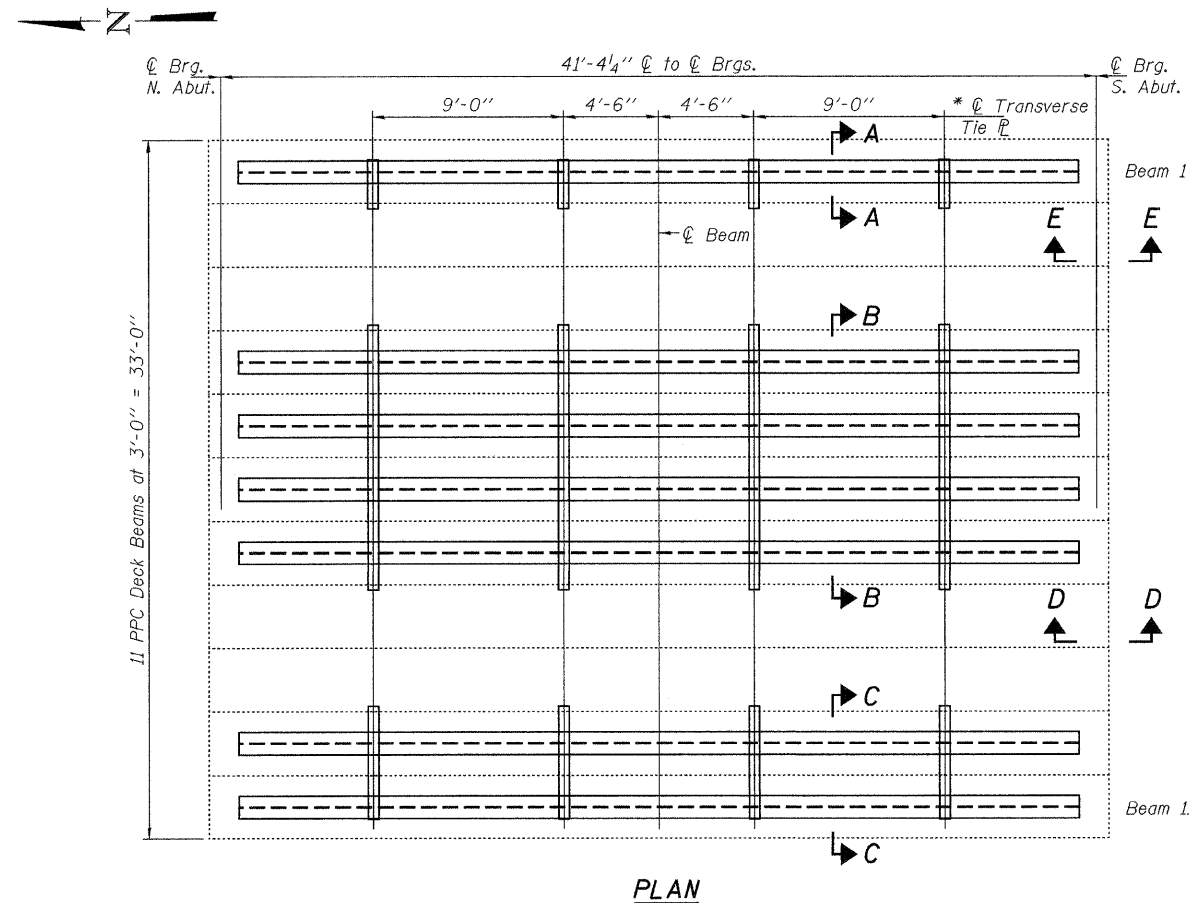
SHEET NO. 2 2 SHEETS	F.A.P. RTE.	SECTION	COUNTY	TOTAL SHEETS	SHEET NO.
	316	(102BR-1)M-2 & (141BR)M	LEE	7	5
			CONTRACT NO. 64G10		
ILLINOIS FED. AID PROJECT					

STATE OF ILLINOIS
DEPARTMENT OF TRANSPORTATION

** Other sections meeting the minimum section modulus shown may be used, subject to approval by the Bureau of Bridges and Structures. The maximum girder depth provided shall be 24".



ELEVATION



PLAN

GENERAL NOTES

All structural steel shall conform to AASHTO Classification M-270 Gr. 36, unless otherwise noted.

Plan dimensions and details relative to existing plans are subject to nominal construction variations. The Contractor shall field verify existing dimensions and details affecting new construction and make necessary approved adjustments prior to construction or ordering of materials. Such variations shall not be cause for additional compensation for a change in scope of the work, however, the Contractor will be paid for the quantity actually furnished at the unit price bid for the work.

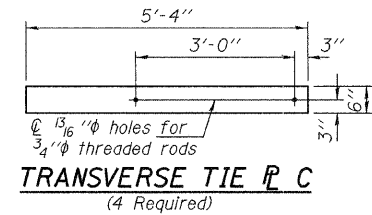
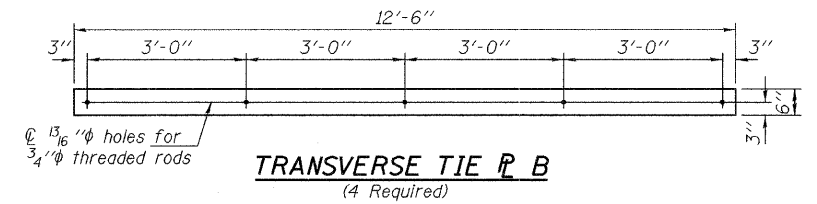
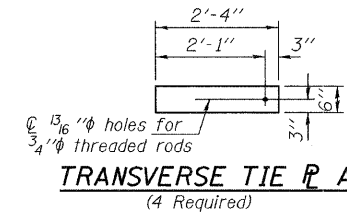
See Section 584 of the Standard Specifications for Epoxy Grouting of Threaded Rods. The cost of epoxy grouting threaded rods shall be included with Furnishing and Erecting Structural Steel.

The Contractor has the option of using used steel. See special provisions.

The contractor is advised that the existing PPC Deck Beams are in a deteriorated condition with reduced load carrying capacity. It is the contractors responsibility to account for the condition of the beams when developing construction procedures.

If the contractor's procedure for placement of beams involves placement of cranes or other heavy equipment on the bridge, a detailed procedure shall be submitted to the Engineer for approval. The procedure shall include calculations, prepared and sealed by an Illinois Licensed Structural Engineer, verifying that the equipment and procedure used will not overstress the existing beams. To distribute load to multiple beams and protect the existing surface, in all cases a double layer mat of heavy timbers shall be used at all times under crane tracks or wheels and any outriggers in the down position. If necessary, shims shall be used under the crane mat to ensure uniform contact with the underlying beams.

No in-stream work will be permitted due to endangered species.



* See sheet 2 of 2 for transverse tie plate designations.

TOTAL BILL OF MATERIAL

ITEM	UNIT	QUANTITY
Furnishing and Erecting Structural Steel	Pound	36710

PLAN AND ELEVATION
IL 172 OVER COUNTY DITCH NO 1
SN 098-0044

SHEET NO. 1	F.A.S. RTE.	SECTION	COUNTY	TOTAL SHEETS	SHEET NO.
2 SHEETS	200	(102BR-1)M-2 & (141BR)M	WHITESIDE	7	6
FED. ROAD DIST. NO.			ILLINOIS FED. AID PROJECT		
			CONTRACT NO. 64G10		

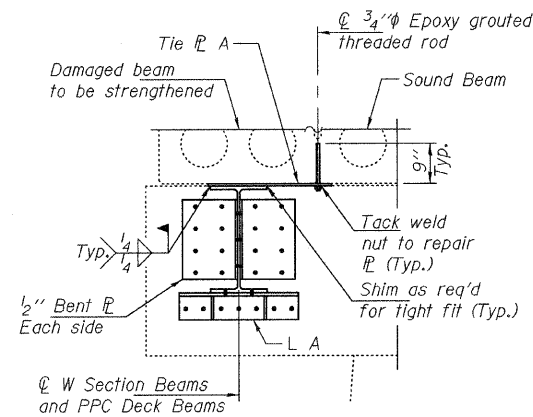
DESIGNED *Vitor H. Veliz*
CHECKED *Rui Bali*
DRAWN *baliva*
CHECKED *VHV*

FEBRUARY 16, 2010
EXAMINED *Rui Bali*
PASSED *Rui Bali*
ENGINEER OF STRUCTURAL SERVICES
ENGINEER OF BRIDGES AND STRUCTURES

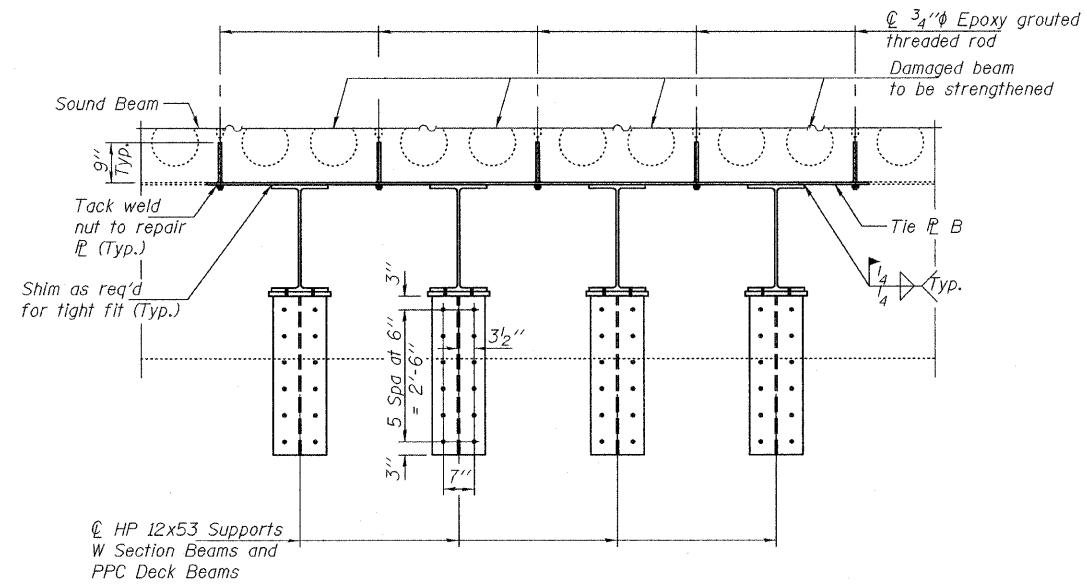


EXPIRES 11-30-2010

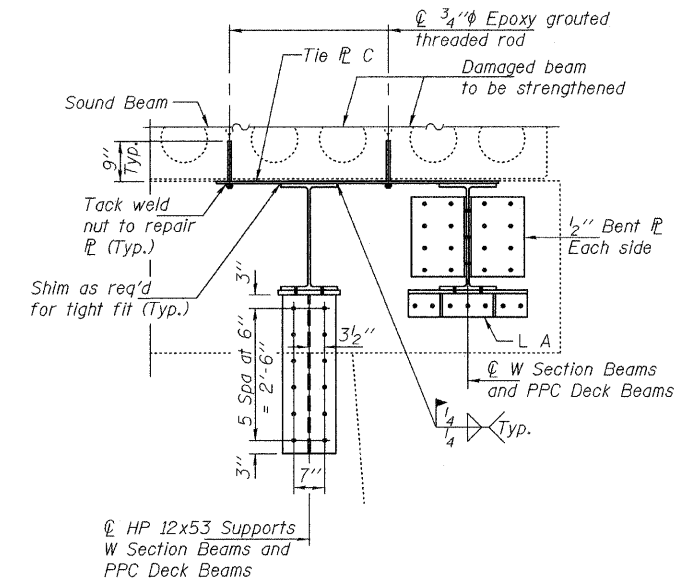
STATE OF ILLINOIS
DEPARTMENT OF TRANSPORTATION



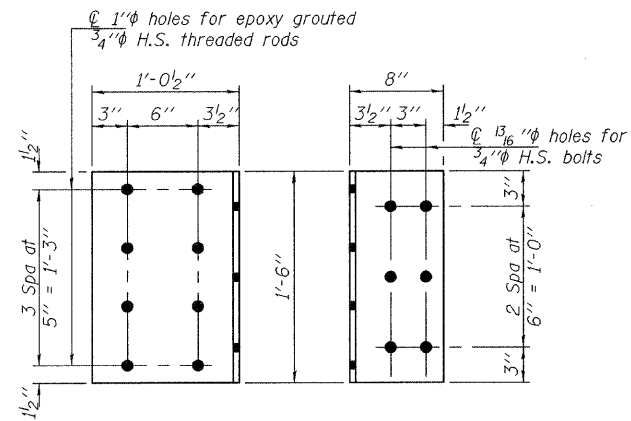
SECTION A-A



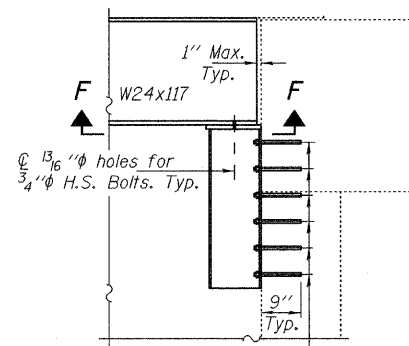
SECTION B-B



SECTION C-C

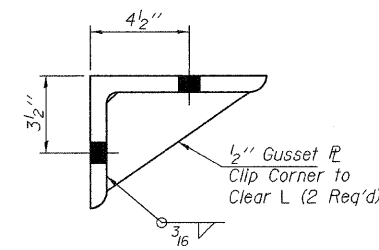


BENT PLATE DETAIL
PL 1/2" x 1'-6" x 1'-8 1/2"
(8 Required)

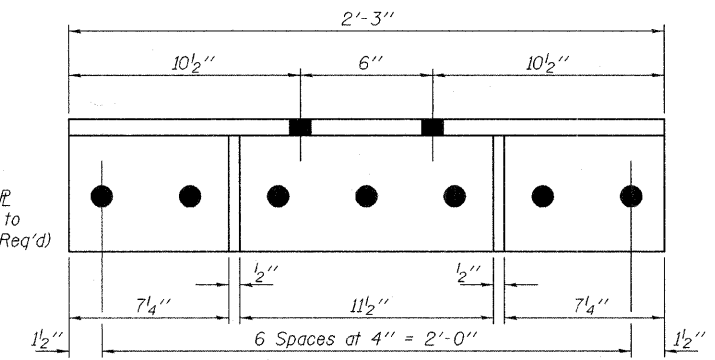


1" holes for epoxy grouted 3/4" H.S. threaded rods
(ASTM A193, B7 or equivalent)

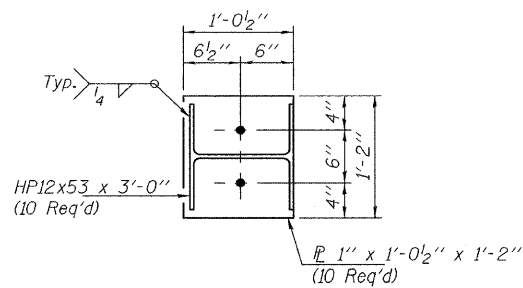
SECTION D-D



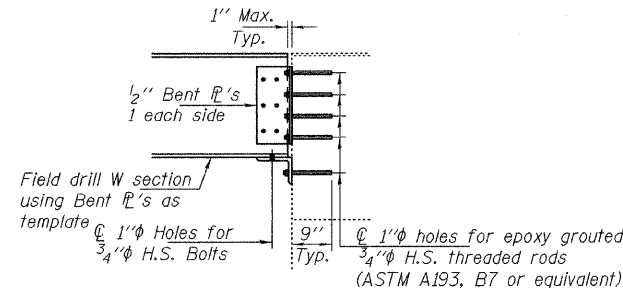
TYPICAL SECTION THRU ANGLE A



ANGLE A
L 8 x 6 x 3/4 x 2'-3"
(4 Required)



SECTION F-F



SECTION E-E

DESIGNED	VHV
CHECKED	DAB
DRAWN	baliva
CHECKED	VHV DAB

FEBRUARY 16, 2010
EXAMINED *Carl Provey*
ENGINEER OF STRUCTURAL SERVICES
PASSED *Ralph E. Anderson*
ENGINEER OF BRIDGES AND STRUCTURES

REPAIR DETAILS
IL 172 OVER COUNTY DITCH NO 1
SN 098-0044

SHEET NO. 2 2 SHEETS	F.A.S. RTE.	SECTION	COUNTY	TOTAL SHEETS	SHEET NO.
	200	(102BR-1)M-2 & (141BR)M	WHITESIDE	7	7
FED. ROAD DIST. NO.			ILLINOIS FED. AID PROJECT		
			CONTRACT NO. 64G10		