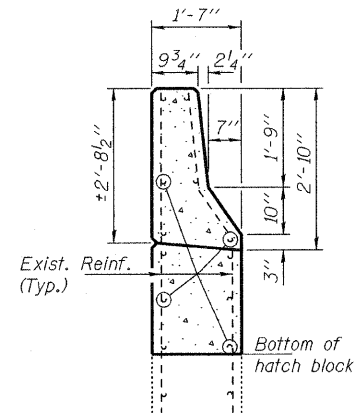
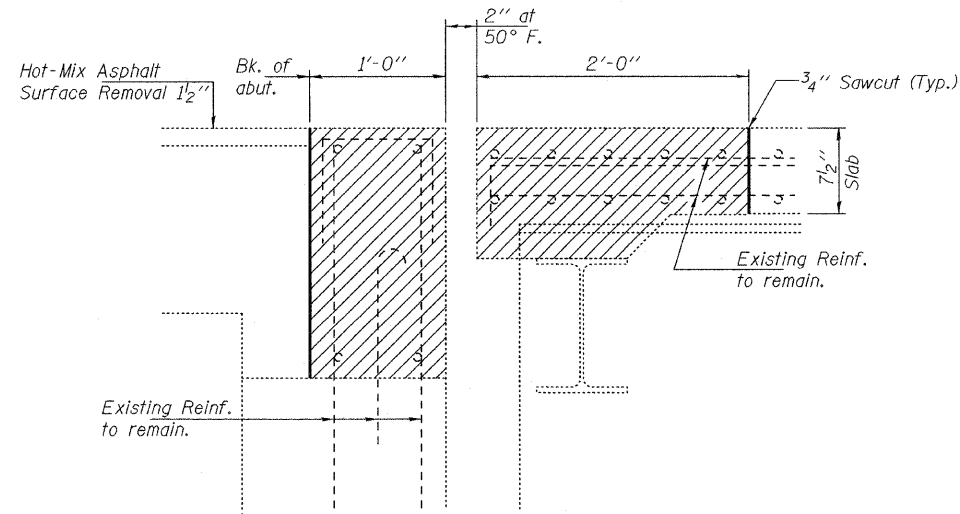


STATE OF ILLINOIS
DEPARTMENT OF TRANSPORTATION



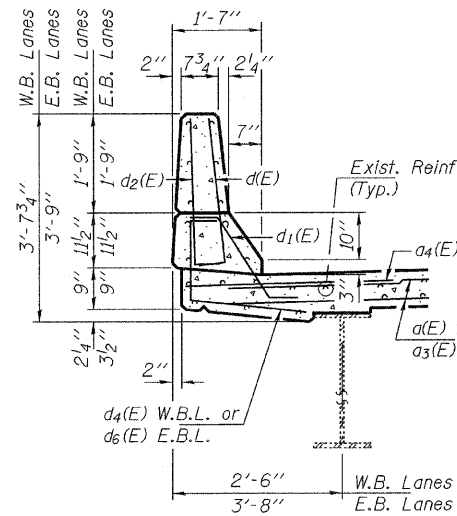
TYPICAL SECTION AT APPROACH PARAPET

Remove portion of wingwall as required at corners to allow clearance for new deck overhang. Cut reinf. flush and seal surface with epoxy. Cost included with Concrete Removal.

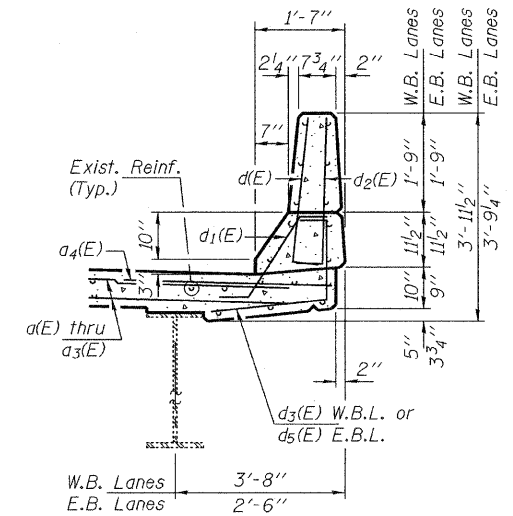


SECTION A-A

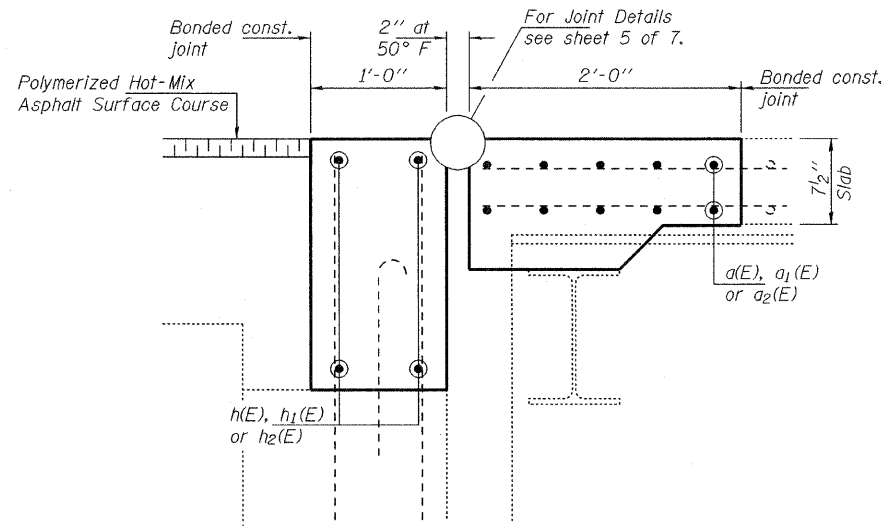
(Near \bar{C} Roadway)
(Dimensions are at RT L's to end of deck)



TYPICAL SECTION THRU WEST PARAPET



TYPICAL SECTION THRU EAST PARAPET



SECTION B-B

(Near \bar{C} Roadway)
(Dimensions are at RT L's to end of deck)

BILL OF MATERIAL SN 101-0067 (E.B.)

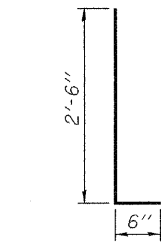
Bar	No.	Size	Length	Shape
a(E)	20	#5	20'-9"	—
a1(E)	20	#5	21'-10"	—
a4(E)	12	#6	4'-10"	—
d(E)	12	#5	3'-0"	L
d1(E)	12	#5	2'-7"	L
d2(E)	12	#4	3'-0"	L
d5(E)	6	#4	3'-6"	L
d6(E)	6	#4	4'-8"	L
h(E)	8	#6	21'-7"	—
h1(E)	8	#6	22'-9"	—
Concrete Removal		Cu. Yd.	13.5	
Concrete Superstructure		Cu. Yd.	13.5	
Reinforcement Bars, Epoxy Coated		Lbs.	1630	

BILL OF MATERIAL SN 101-0068 (W.B.)

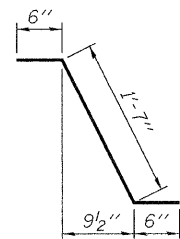
Bar	No.	Size	Length	Shape
a1(E)	20	#5	21'-10"	—
a2(E)	20	#5	21'-8"	—
a4(E)	12	#6	4'-10"	—
d(E)	12	#5	3'-0"	L
d1(E)	12	#5	2'-7"	L
d2(E)	12	#4	3'-0"	L
d3(E)	6	#4	4'-8"	L
d4(E)	6	#4	3'-6"	L
h1(E)	8	#6	22'-9"	—
h2(E)	8	#6	22'-7"	—
Concrete Removal		Cu. Yd.	13.9	
Concrete Superstructure		Cu. Yd.	13.9	
Reinforcement Bars, Epoxy Coated		Lbs.	1670	

JOINT REPLACEMENT DETAILS SN 101-0067 (EB) & 0068 (WB)

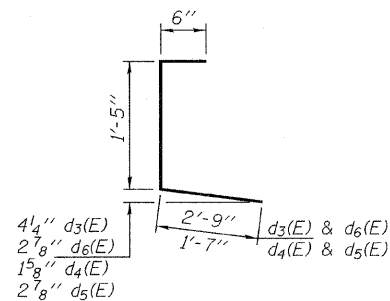
SHEET NO. 4	F.A.I. RTE.	SECTION	COUNTY	TOTAL SHEETS	SHEET NO.
				39	20
7 SHEETS		(4VBY, 4VBY-1, 5HB)M	WINNEBAGO	36	20
CONTRACT NO. 64G12					
FED. ROAD DIST. NO. ILLINOIS FED. AID PROJECT					



BARS d(E) & d2(E)



BARS d1(E)



BARS d3(E) THRU d6(E)

DESIGNED	IJL
CHECKED	ATH
DRAWN	Kyle M. Steffen
CHECKED	IJL ATH

MARCH 9, 2010
EXAMINED *A. Carl Paves*
ENGINEER OF STRUCTURAL SERVICES
PASSED *Ralph E. Anderson*
ENGINEER OF BRIDGES AND STRUCTURES