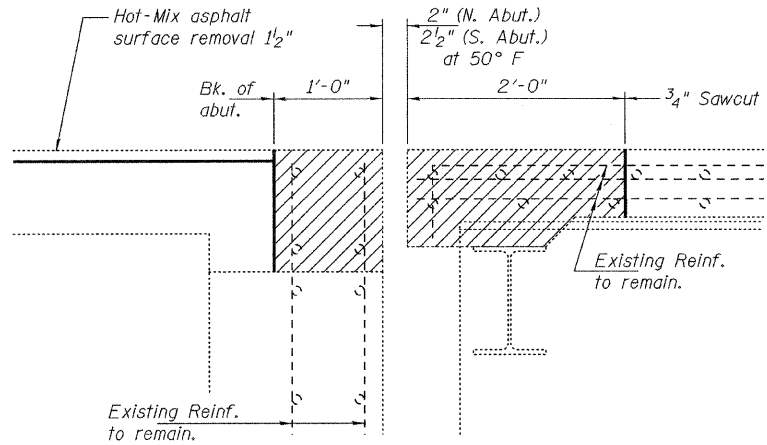
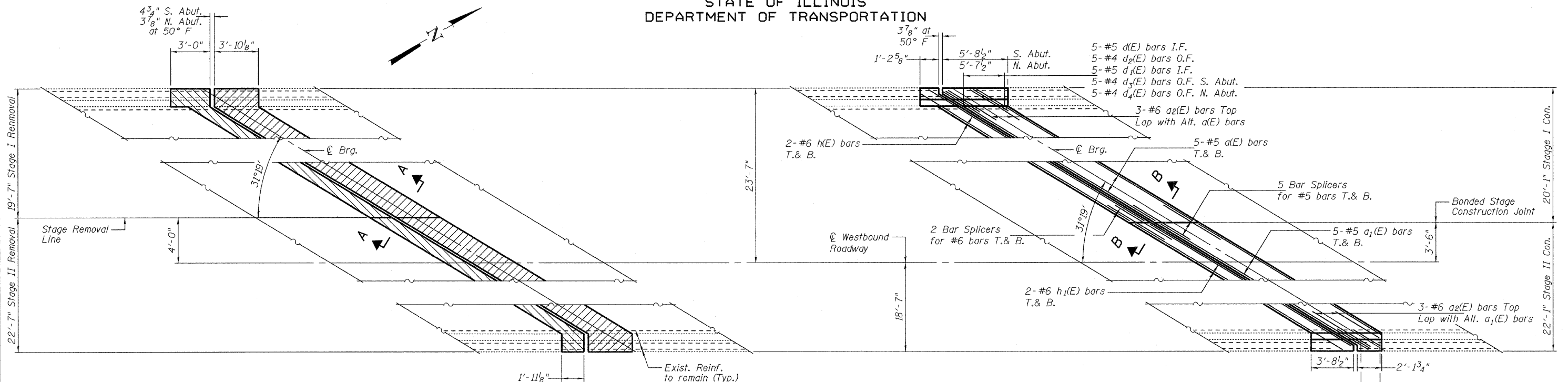
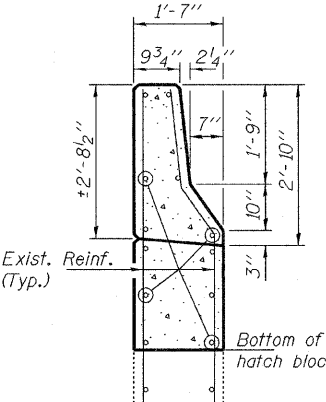
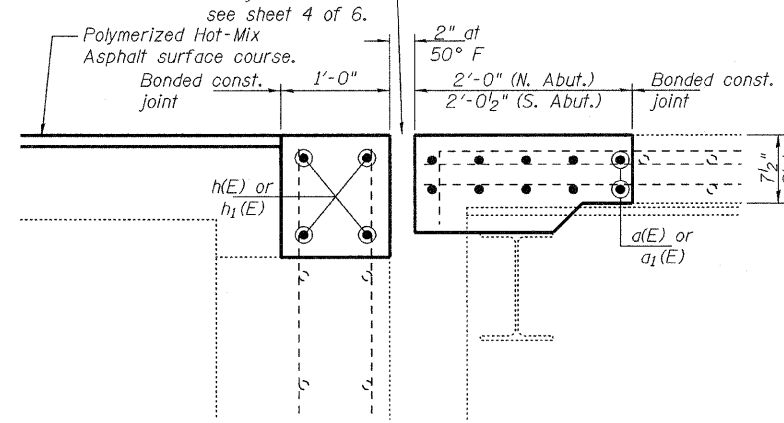


STATE OF ILLINOIS
DEPARTMENT OF TRANSPORTATION



REMOVAL PLAN
(S. Abut. shown, N Abut. similar by rotation)

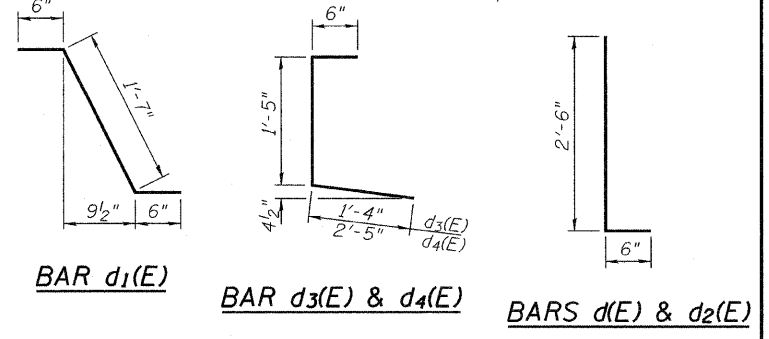
For joint details see sheet 4 of 6.



REPLACEMENT PLAN

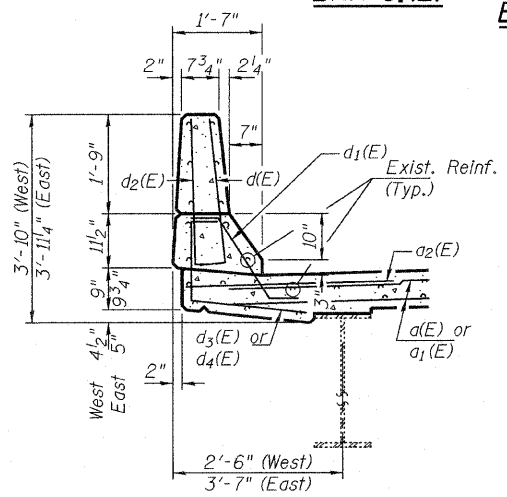
(S. Abut. shown, N Abut. similar by rotation)

Reinforcement details:
 3-#5 d(E) bars I.F.
 3-#4 d₂(E) bars O.F.
 3-#5 d₁(E) bars I.F.
 3-#4 d₃(E) bars O.F. S. Abut.
 3-#4 d₄(E) bars O.F. N. Abut.



BILL OF MATERIAL

Bar	No.	Size	Length	Shape
a(E)	20	#5	36'-7"	
a ₁ (E)	20	#5	40'-5"	
a ₂ (E)	12	#6	4'-6"	
d(E)	16	#5	3'-0"	
d ₁ (E)	16	#5	2'-7"	
d ₂ (E)	16	#4	3'-0"	
d ₃ (E)	8	#4	3'-3"	
d ₄ (E)	8	#4	4'-4"	
h(E)	8	#6	38'-0"	
h ₁ (E)	8	#6	41'-10"	
Concrete Removal			Cu. Yd.	26.3
Concrete Superstructure			Cu. Yd.	26.4
Reinforcement Bars, Epoxy Coated			Lbs.	2810



WESTBOUND JOINT DETAILS
SN 101-0069 & 0070

SHEET NO.	F.A.I. RTE.	SECTION	COUNTY	TOTAL SHEETS	SHEET NO.
2	39	(4VBY, 4VBY-1, 5HBM)	Winnebago	36	25
6 SHEETS			CONTRACT NO. 64G12		
FED. ROAD DIST. NO.		ILLINOIS FED. AID PROJECT			

Notes:
Hatched areas indicate removal.

DESIGNED	I.J.L.	EXAMINED	March 9, 2010
CHECKED	ATH	PASSED	<i>Ralph E. Anderson</i> ENGINEER OF BRIDGES AND STRUCTURES
DRAWN			
CHECKED	I.J.L. ATH		