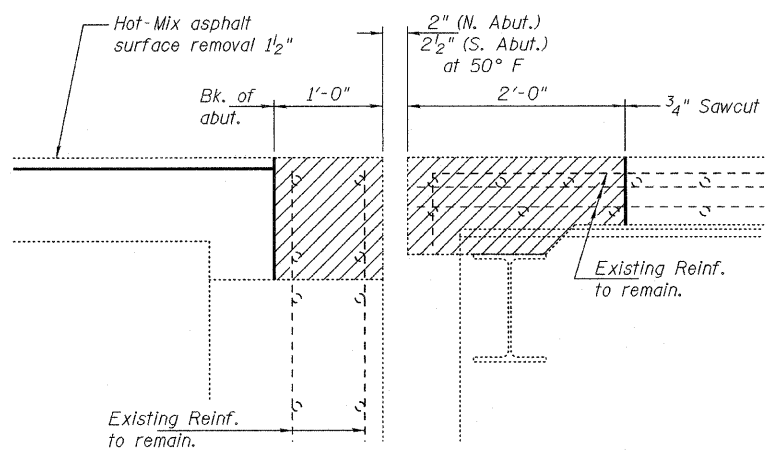
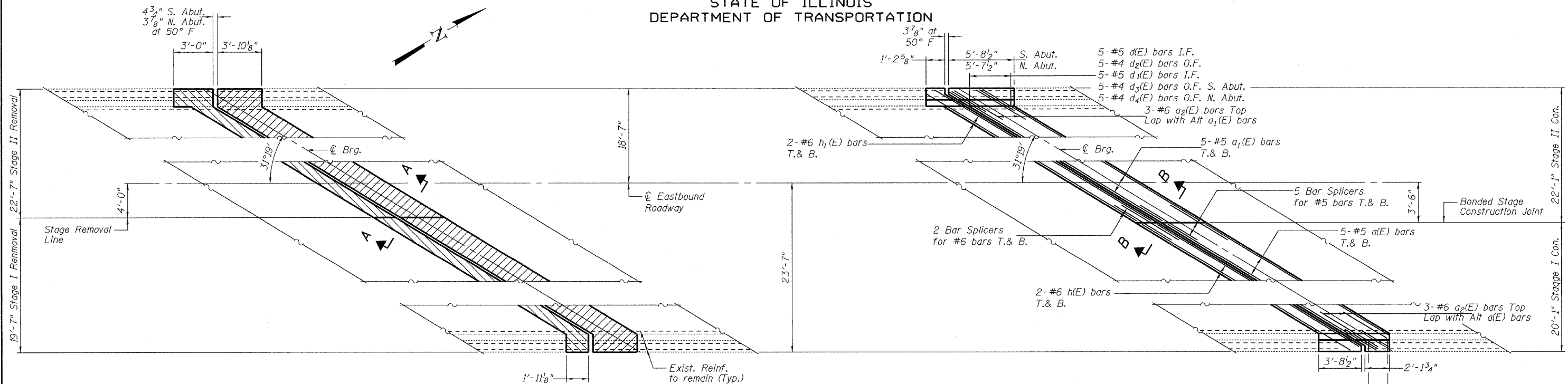
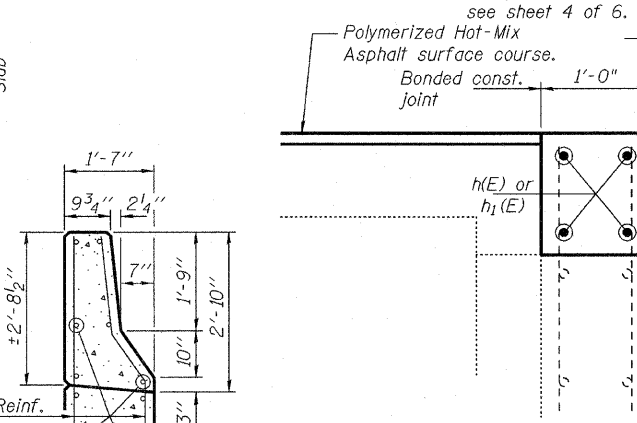


STATE OF ILLINOIS
DEPARTMENT OF TRANSPORTATION



REMOVAL PLAN

(S. Abut. shown, N Abut. similar by rotation)



SECTION B-B

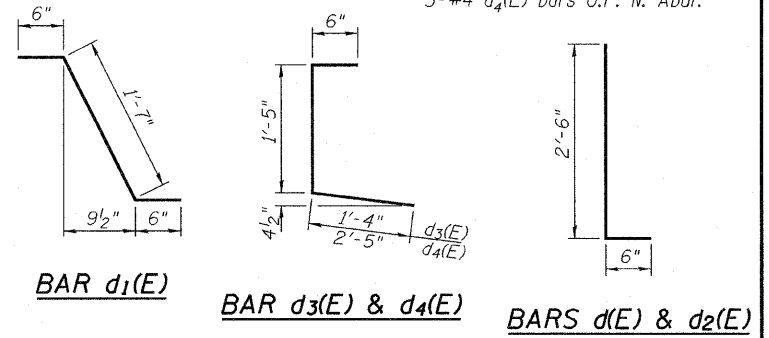
(Near ∅ Roadway)
(Dims at RT L's to end of deck)

TYPICAL SECTION AT APPROACH PARAPET

Remove portion of wingwall as required at corners to allow clearance for new deck overhang. Cut reinf. flush and seal surface with epoxy. Cost included with Concrete Removal.

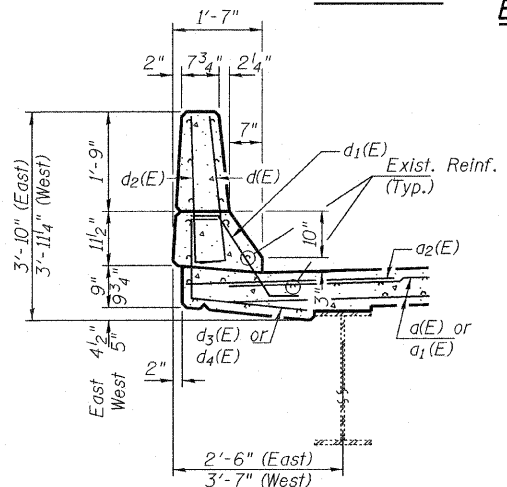
REPLACEMENT PLAN

(S. Abut. shown, N Abut. similar by rotation)



BILL OF MATERIAL

Bar	No.	Size	Length	Shape
a(E)	20	#5	36'-7"	—
a1(E)	20	#5	40'-5"	—
a2(E)	12	#6	4'-6"	—
d(E)	16	#5	3'-0"	L
d1(E)	16	#5	2'-7"	L
d2(E)	16	#4	3'-0"	L
d3(E)	8	#4	3'-3"	L
d4(E)	8	#4	4'-4"	L
h(E)	8	#6	38'-0"	—
h1(E)	8	#6	41'-10"	—
Concrete Removal			Cu. Yd.	26.6
Concrete Superstructure			Cu. Yd.	26.6
Reinforcement Bars, Epoxy Coated			Lbs.	2810



EASTBOUND JOINT DETAILS
SN 101-0069 & 0070

SHEET NO. 3	F.A.I. RTE.	SECTION	COUNTY	TOTAL SHEETS	SHEET NO.
	39			(4VBY, 4VBY-1, 5HB)M	Winnebago
6 SHEETS	FED. ROAD DIST. NO.	ILLINOIS	FED. AID PROJECT	CONTRACT NO. 64G12	

Notes:
Hatched areas indicate removal.

DESIGNED	I.J.L.
CHECKED	ATH
DRAWN	
CHECKED	I.J.L. ATH

March 9, 2010

EXAMINED *Carl Perry*
ENGINEER OF STRUCTURAL SERVICES

PASSED *Ralph E. Anderson*
ENGINEER OF BRIDGES AND STRUCTURES