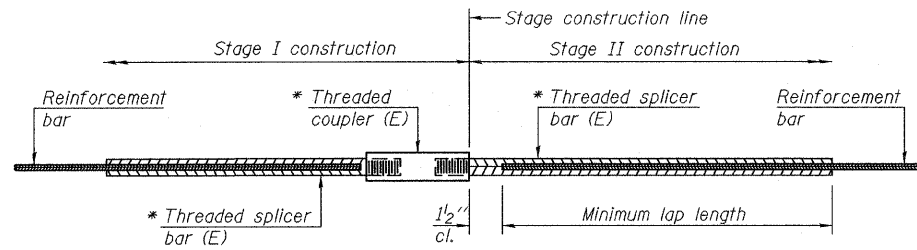


STATE OF ILLINOIS  
DEPARTMENT OF TRANSPORTATION



**STANDARD BAR SPLICER ASSEMBLY**

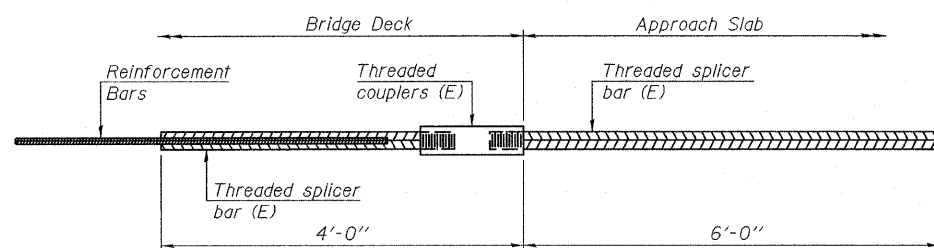
Minimum Lap Lengths				
Bar size to be spliced	Table 1	Table 2	Table 3	Table 4
3, 4	1'-5"	1'-11"	2'-1"	2'-4"
5	1'-9"	2'-5"	2'-7"	2'-11"
6	2'-1"	2'-11"	3'-1"	3'-6"
7	2'-9"	3'-10"	4'-2"	4'-8"
8	3'-8"	5'-1"	5'-5"	6'-2"
9	4'-7"	6'-5"	6'-10"	7'-9"

Table 1: Black bar, 0.8 Class C  
Table 2: Black bar, Top bar lap, 0.8 Class C  
Table 3: Epoxy bar, 0.8 Class C  
Table 4: Epoxy bar, Top bar lap, 0.8 Class C

Threaded splicer bar length = min. lap length + 1 1/2" + thread length

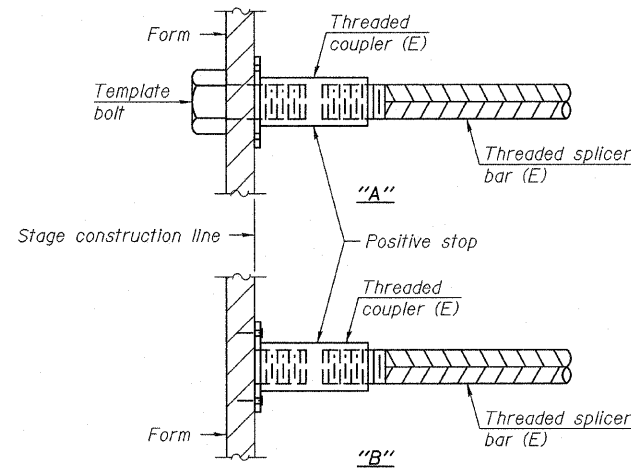
\* Epoxy not required on Bar Splicer Assembly components used in conjunction with black bars.

Location	Bar size	No. assemblies required	Table for minimum lap length
0069 N. Abutment	#5	10	3
0069 N. Abutment	#6	4	3
0069 S. Abutment	#5	10	3
0069 S. Abutment	#6	4	3
0070 N. Abutment	#5	10	3
0070 N. Abutment	#6	4	3
0070 S. Abutment	#5	10	3
0070 S. Abutment	#6	4	3



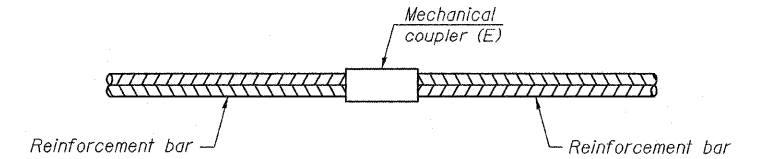
**BAR SPLICER ASSEMBLY FOR #5 BAR ON INTEGRAL OR SEMI-INTEGRAL ABUTMENTS**

No. required =



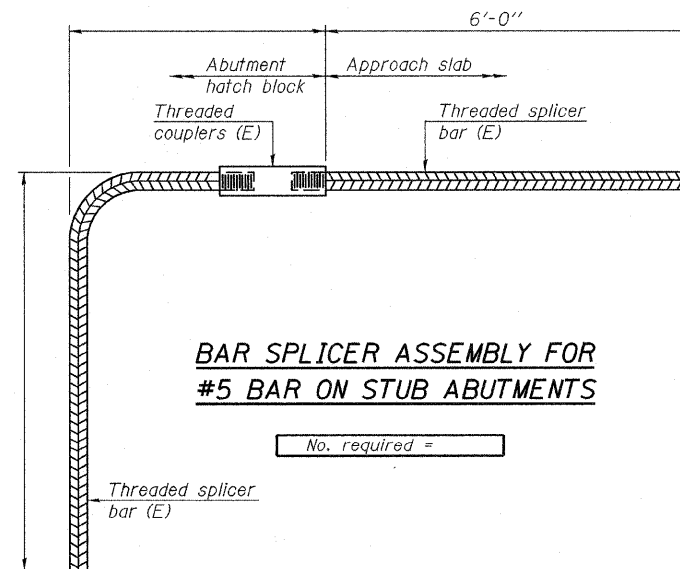
**INSTALLATION AND SETTING METHODS**

"A": Set bar splicer assembly by means of a template bolt.  
"B": Set bar splicer assembly by nailing to wood forms or cementing to steel forms.  
(E) : Indicates epoxy coating.



**STANDARD MECHANICAL SPLICER**

Location	Bar size	No. assemblies required



**BAR SPLICER ASSEMBLY FOR #5 BAR ON STUB ABUTMENTS**

No. required =

**NOTES**

Splicer bars shall be deformed with threaded ends and have a minimum 60 ksi yield strength.  
All reinforcement shall be lapped and tied to the splicer bars.  
Bar splicer assemblies shall be epoxy coated according to the requirements for reinforcement bars. See Section 508 of the Standard Specifications.  
See special provision for Mechanical Splicers.  
See approved list of bar splicer assemblies and mechanical splicers for alternatives.

DESIGNED I.J.L.
CHECKED ATH
DRAWN Drew Christopher
CHECKED I.J.L. ATH

March 9, 2010
EXAMINED <i>A. Carl</i>
PASSED <i>Ralph E. Anderson</i>

BSD-1 11-1-09

**BAR SPLICER DETAILS  
SN 101-0069 & 0070**

SHEET NO. 5 6 SHEETS	F.A.I. RTE. 39	SECTION (4VBY, 4VBY-1, 5HB)M	COUNTY Winnebago	TOTAL SHEETS 36	SHEET NO. 28
	FED. ROAD DIST. NO. ILLINOIS		CONTRACT NO. 64G12 FED. AID PROJECT		