

STATE OF ILLINOIS
DEPARTMENT OF TRANSPORTATION
DIVISION OF HIGHWAYS
**PLANS FOR PROPOSED
FEDERAL AID HIGHWAY**

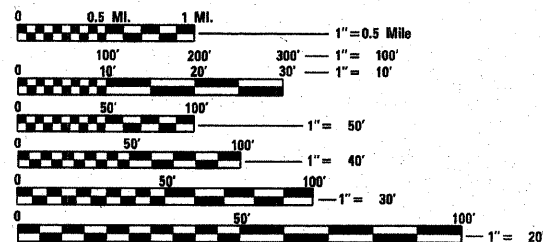
INDEX OF SHEETS

1	COVER SHEET
2	GENERAL NOTES
3	SUMMARY OF QUANTITIES
4	SCHEDULE OF QUANTITIES
5	TYPICAL SECTIONS & DETAILS
6	PLAN & PROFILE
7	STAGE CONSTRUCTION
8	EROSION CONTROL PLAN
9-18	STRUCTURE PLANS
19-21	CROSS SECTIONS
21A-21D	EXISTING BRIDGE PLANS

STANDARDS

000001-05	STANDARD SYMBOLS, ABBREVIATIONS AND PATTERNS
001001-02	AREAS OF REINFORCEMENT BARS
001006	DECIMAL OF AN INCH AND OF A FOOT
280001-05	TEMPORARY EROSION CONTROL SYSTEMS
515001-03	NAME PLATE FOR BRIDGES
630001-08	STEEL PLATE BEAM GUARDRAIL
630101-07	GUARDRAIL MOUNTED ON EXISTING CULVERTS
630201-06	PCC/HMA STABILIZATION AT STEEL PLATE BEAM GUARDRAIL
630301-05	SHOULDER WIDENING FOR TYPE 1 (SPECIAL) GUARDRAIL TERMINALS
635006-03	REFLECTOR AND TERMINAL MARKER PLACEMENT
635011-02	REFLECTOR MARKER AND MOUNTING DETAILS
701001-02	OFF-ROAD OPERATIONS 2L, 2W, MORE THAN 15' (4.5 m) AWAY
701006-03	OFF-ROAD OPERATIONS 2L, 2W, 15' (4.5 m) TO 24" (600 mm) FROM PAVEMENT EDGE
701306-02	LANE CLOSURE, 2L, 2W, SLOW MOVING OPERATIONS DAY ONLY, FOR SPEEDS ≥ 45 MPH
701311-03	LANE CLOSURE, 2L, 2W, MOVING OPERATIONS - DAY ONLY
701321-10	LANE CLOSURE, 2L, 2W, BRIDGE REPAIR WITH BARRIER
701326-03	LANE CLOSURE, 2L, 2W, PAVEMENT WIDENING, FOR SPEEDS ≥ 45 MPH
701901-01	TRAFFIC CONTROL DEVICES
704001-06	TEMPORARY CONCRETE BARRIER
781001-03	TYPICAL APPLICATIONS RAISED REFLECTIVE PAVEMENT MARKERS

ENGLISH RATIOS

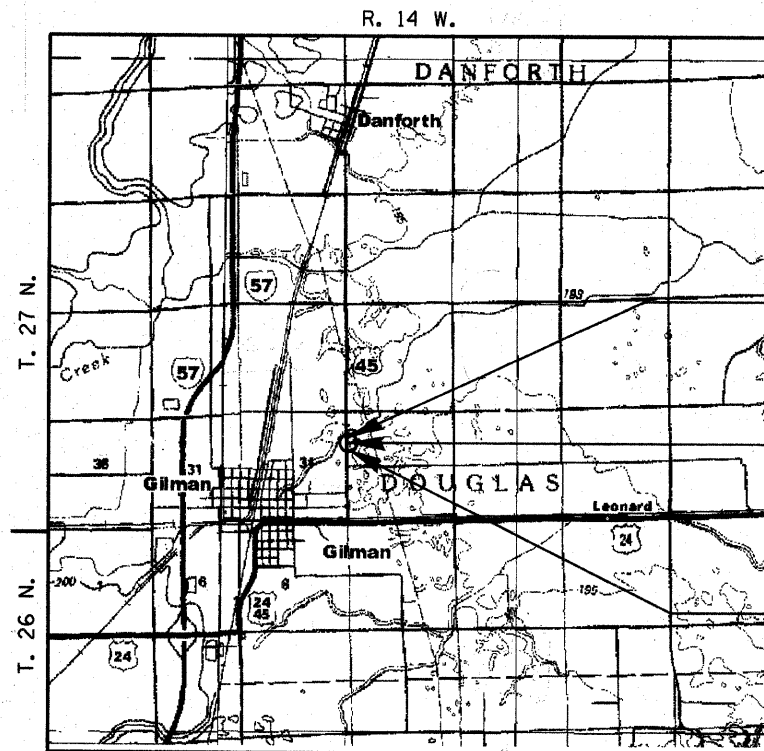


FULL SIZE PLANS HAVE BEEN PREPARED USING STANDARD ENGINEERING SCALES, REDUCED SIZED PLANS WILL NOT CONFORM TO STANDARD SCALES, IN MAKING MEASUREMENTS ON REDUCED PLANS, THE ABOVE SCALES MAY BE USED.

J.U.L.I.E.
JOINT UTILITY LOCATION INFORMATION FOR EXCAVATION
1-800-892-0123

DISTRICT 3 NO. (815) 434-6131
PROJECT ENGINEER: DAVE BROVIAK
UNIT CHIEF: MARK JONES
TOWNSHIP: DOUGLAS

**F.A.S. ROUTE 317 (U.S. 45)
SECTION 36 BR
IROQUOIS COUNTY
C-93-057-01**



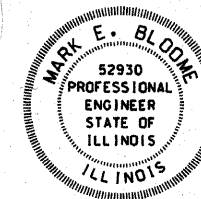
GROSS & NET LENGTH OF IMPROVEMENT = 650.00 FEET
= 0.123 MILES

SCALE: 1" = 0.5 MILE

BEGIN IMPROVEMENT
STA. 1248+00.00

SECTION 36 BR INCLUDES
REMOVE SN 038-0040, REPLACE WITH
TRIPLE 10' X 9' BOX CULVERT SN 038-2015

END IMPROVEMENT
STA. 1254+50.00



Mark E. Bloome
ILLINOIS PROFESSIONAL ENGINEER NO. 52930

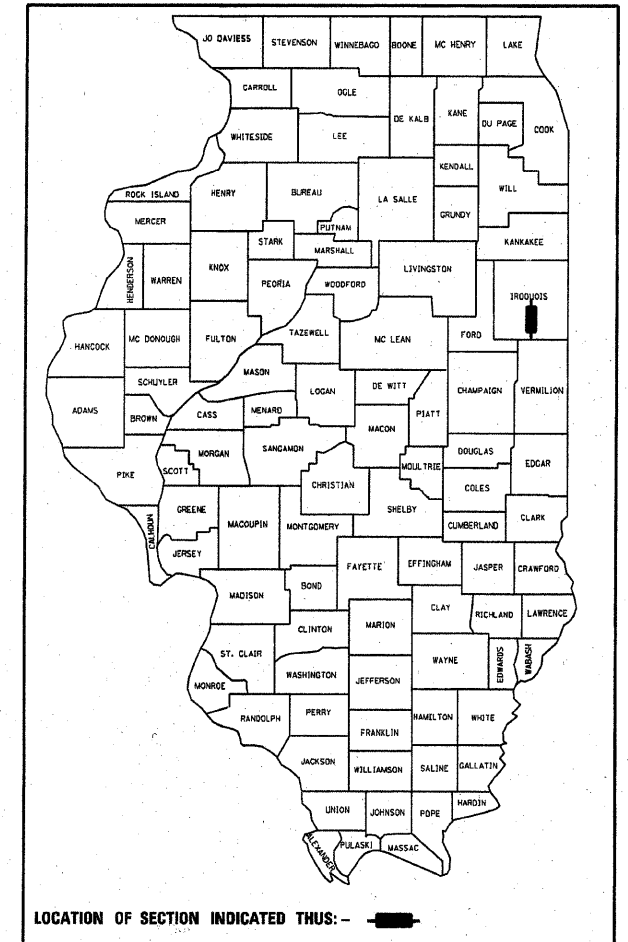
DATE SIGNED: 5-5-2005

LICENSE EXP. DATE: 11-30-2005

F.A.S. RTE.	SECTION	COUNTY	TOTAL SHEETS	SHEET NO.
317	36 BR	IROQUOIS	21	1
STA. 1248+00		TO STA. 1254+50		
FED. ROAD DIST. NO. 3 ILLINOIS FED. AID PROJECT				

D-93-063-98

CONTRACT NO. 66171



DESIGN DESIGNATION:
MAJOR COLLECTOR

2001 ADT 1875
PV 95% SU 3% MU 2%

STATE OF ILLINOIS
DEPARTMENT OF TRANSPORTATION
DIVISION OF HIGHWAYS

SUBMITTED February 10 20 10
George Ryan
DEPUTY DIRECTOR OF HIGHWAYS, REGION ENGINEER

March 19 20 10
Scott E. Stitt, P.E./e
REGIONAL ENGINEER OF DESIGN AND ENVIRONMENT

March 19 20 10
Christine M. Reed/e
DIRECTOR OF HIGHWAYS, CHIEF ENGINEER

PRINTED BY THE AUTHORITY OF THE STATE OF ILLINOIS

