

FOR INFORMATION ONLY

F.A.S. RT.	SECTION	COUNTY	TOTAL SHEETS	SHEET NO.
317	36 BR	IROQUOIS	21	21B
STA. 1248+00		TO STA. 1254+50		
FED. ROAD DIST. NO. 3		ILLINOIS FED. AID PROJECT		

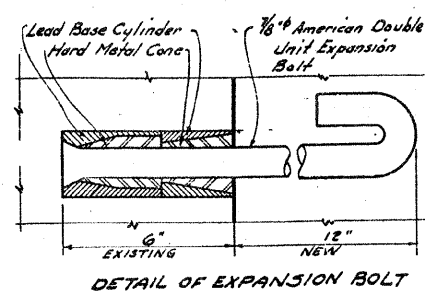
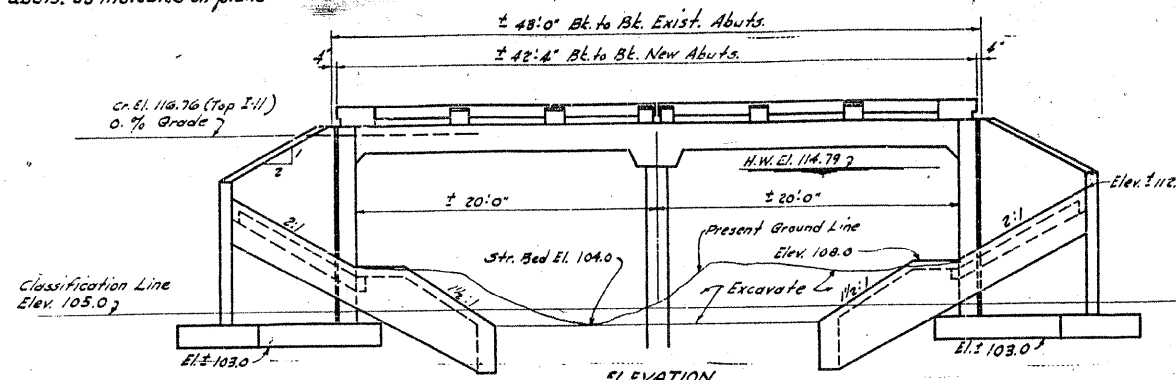
CONTRACT NO. 66171

DATE	SECTION	COUNTY	TOTAL SHEETS	SHEET NO.
4.11.25	36 BR	Iroquois	21	15
FED. ROAD DIST. NO. 3		ILLINOIS FED. AID PROJECT		

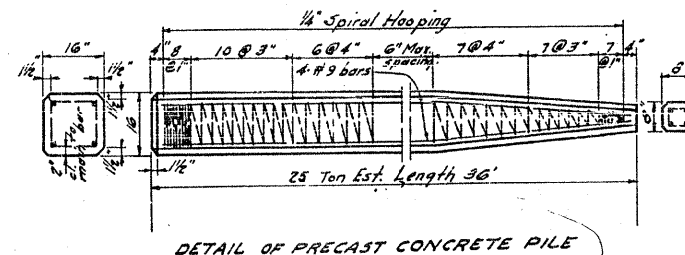
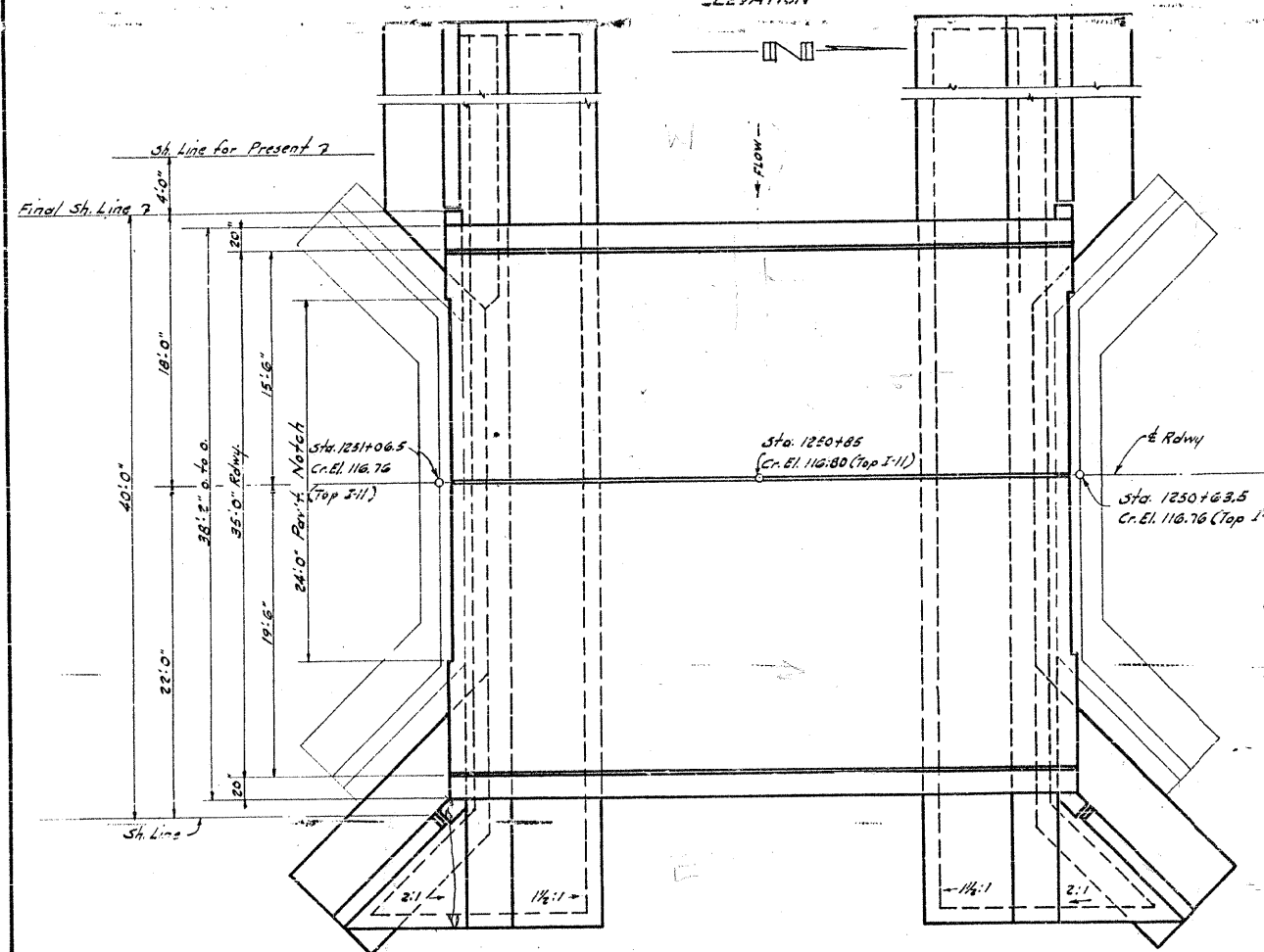
SHEET NO. 1
SHEETS

STATE OF ILLINOIS
DEPARTMENT OF PUBLIC WORKS & BUILDINGS
DIVISION OF HIGHWAYS

B.M. Top S.W. Abut. Elev. 116.5
Existing Structure R.C. Thru Girder 1@40'-0"
Rdwy. 20'-0" R.C. Closed Abuts. Contractor
shall remove existing super & portions of
existing abuts. as indicated on plans



GENERAL NOTES
Class X Concrete shall be used throughout except in Handrail.
Handrail Concrete shall be used in Handrail.
The concrete floor slab on each side of the center line joint shall be
poured in one continuous operation.
Handrail shall not be poured until falsework has been removed.
The cost of cement nails and joint filler shall be included in the
unit price for Class X Concrete.
The contract unit price for Expansion Bolts shall include furnishing,
drilling holes, and setting Expansion Bolts.
Backfilling shall be done in accordance with Art. 50.10 of the
Std. Specs.
For water proofing see Special Provisions.
The Contractor shall drive one test pile in permanent location
as directed by the Engineer, before casting remainder of piles.
Concrete floor slabs shall be finished in accordance with the
applicable provisions of Section 59 of the Std. Specs.
Bridge Contractor shall excavate channel as shown for 50' each side
of Roadway



STA. 1250+85 (1)
BUILT 195 BY
STATE OF ILLINOIS
S.B.I. RT. 25 SEC. 36-BY
F.A. PROJ. ET. 29(13)
LOADING H-20-516

NAME & DATA
110 1001

WATERWAY INFORMATION

Drainage Area	3000 Acres
Character	Rolling, Cult. & City of Gilman
Req'd Opening (c=0.6 Tolerats)	243'-8"
Present Opening	323'-0"
Proposed Opening	369'-0"

TOTAL BILL OF MATERIAL

ITEM	SUPER	SUB	TOTALS
Reinforcement Bars	Lbs. 15,140	4,930	20,070
Class X Concrete	Cu. Yds. 67.8	87.4	155.2
Handrail Concrete	Cu. Yds. 1.9		1.9
Name &	Ea. One		One
Expansion Bolts	Ea.	76	76
Slope Wall	Sq. Yds.	270	270
16" Precast Conc. Piles (Lx 36")	Lin. Ft.	216	216
Test Pile	Ea.	One	One
Class "A" Exca. for Struct.	Cu. Yds.	220	220
Class "B" Exca. for Struct.	Cu. Yds.	120	120
Channel Excavation	Cu. Yds.	250	250
Concrete Removal	Cu. Yds.	2.0	2.0
Removal of Exist. Super.	Ea.	One	One
Temporary Bridge Complete	Ea.		One
Removal of Temporary Bridge	Ea.		One
Transporting Temporary Bridge			Lump Sum

DESIGNED *Ralph H. Hart*
CHECKED *James J. Hareveny*
DRAWN *R.H. Hareveny*
CHECKED *James J. Hareveny*

APR 16 1952
EXAMINED *W. E. Hanson*
PASSED *F. J. Hareveny*
APPROVED *F. M. Barker*

STRESSES
f_c 20000 #/sq"
f_t 1400 #/sq" Positive
f_t 1400 #/sq" Negative
f_c 800 #/sq"
f_t 10
Loading H20-516

GENERAL PLAN & ELEVATION
PROJ. FI-29(13)
F.A. RTE. 26 (S.B.I. RT. 25) SEC. 36-BY
IROQUOIS CO.
STA. 1250+85 (1)