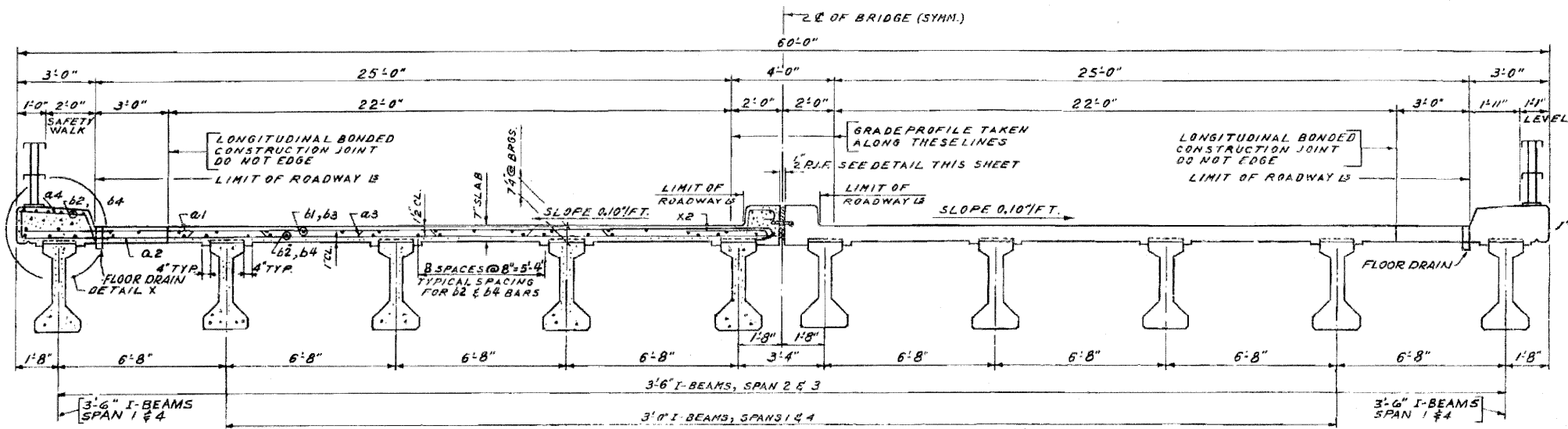
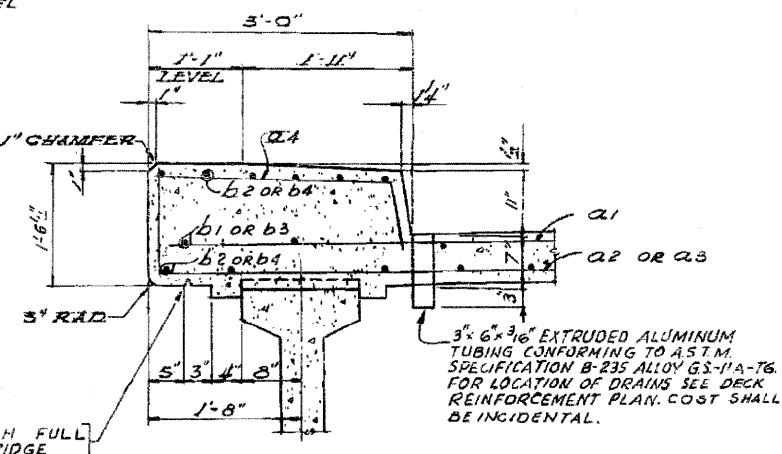


ROUTE NO.	SECTION	COUNTY	TOTAL SHEETS	SHEET NO.
F.A.I. 80	50-2HB-5	LA SALLE	492	492D
STA.	TO STA.			
B. P. R. REG. NO. 4	ILLINOIS	PROJECT		

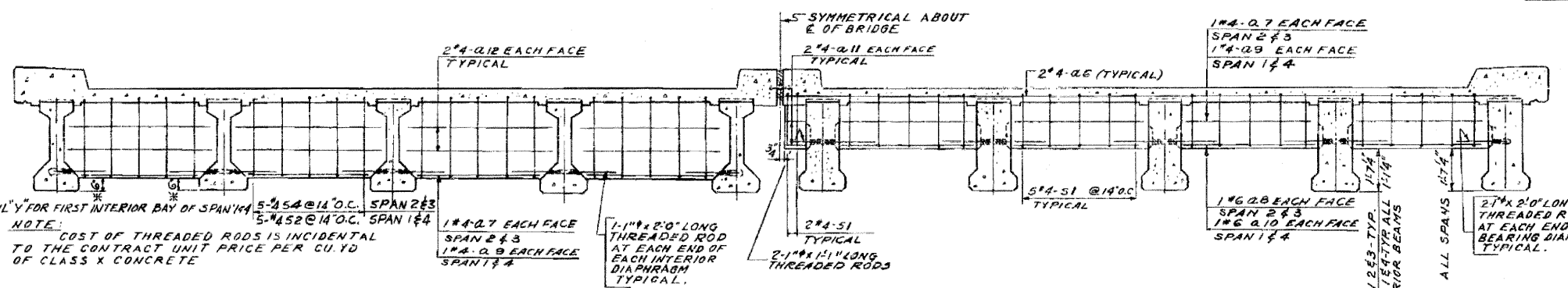
SHEET 4 OF 16



TYPICAL CROSS SECTION-SPAN 2 & 3
SPAN 1 & 4 SIMILAR EXCEPT AS NOTED OR SHOWN
SCALE: 3/8" = 1'-0"



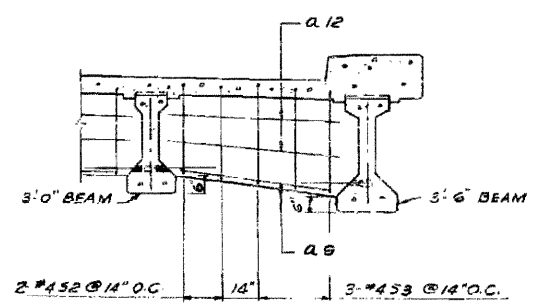
DETAIL "X" AND DRAIN DETAIL
SCALE: 1" = 1'-0"



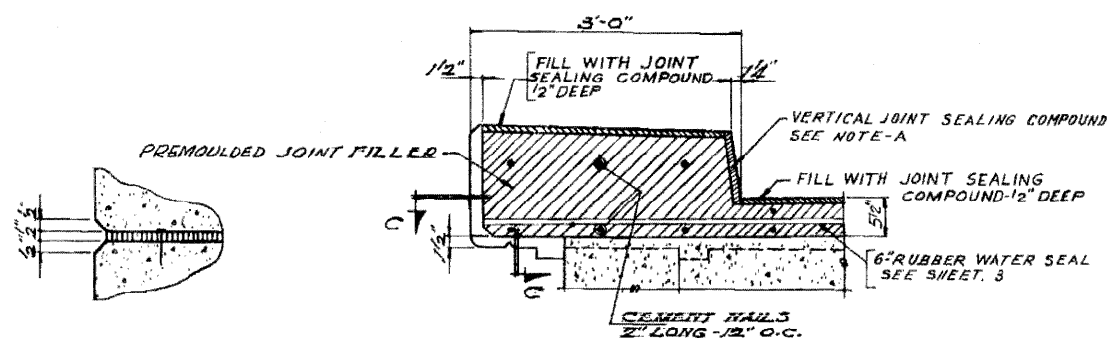
AT INTERIOR

AT BEARINGS

TYPICAL DIAPHRAGM DETAILS-SPAN 2 & 3
SPAN 1 & 4 SIMILAR EXCEPT AS NOTED OR SHOWN
SCALE: 3/8" = 1'-0"

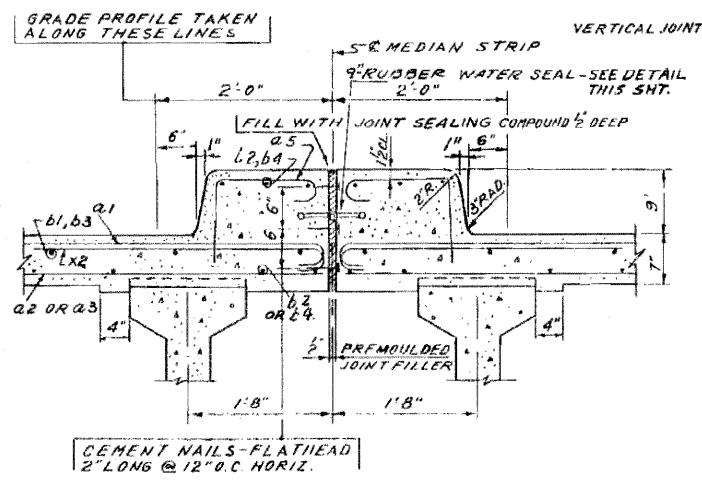


INTERIOR DIAPHRAGM DETAIL "Y"
AT SPAN 1 & 4 ONLY

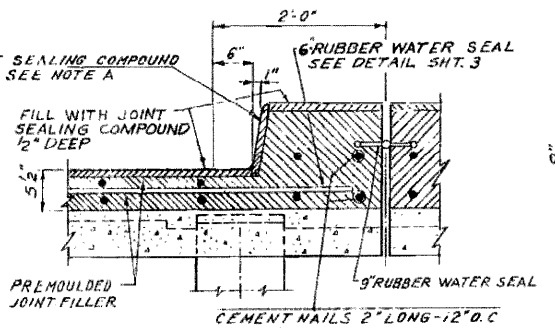


SECTION "C" CURB DETAIL AT FIXED PIER
SCALE: 1" = 1'-0"

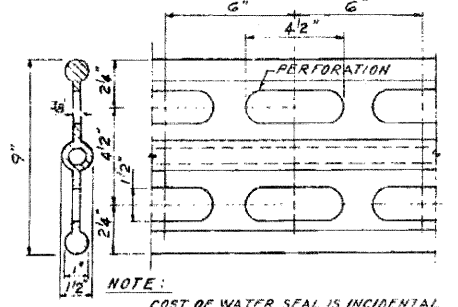
NOTE-A
VERTICAL JOINTS SHALL BE SEALED WITH A BLACK TWO COMPONENT, NON-STAINING SEALING COMPOUND WITH POLYSULFIDE LIQUID POLYMERS-GUN GRADE WITH PRIMER. COST INCIDENTAL TO THE CONTRACT.



SECTION THRU MEDIAN STRIP
SCALE: 1" = 1'-0"



MEDIAN DETAIL AT FIXED PIER
SCALE: 1" = 1'-0"



NOTE:
COST OF WATER SEAL IS INCIDENTAL TO THE CONTRACT UNIT PRICE PER CU. YD. OF CLASS X CONCRETE. SEE SPECIAL PROVISIONS.

DETAIL OF 9" RUBBER WATER SEAL
SCALE: 3" = 1'-0"

FOR INFORMATION ONLY

DECK CROSS SECTIONS AND DIAPHRAGM DETAILS
GRADE SEPARATION
S.A. ROUTE 80 (UTICA ROAD)
OVER I-80
F.A. PROJECT
F.A.I. ROUTE 80 SECTION 50-2HB-5
LA SALLE COUNTY
STATION 895+86.16

▲ SHEET ADDED 4-6-10

ALFRED HENESCH & ASSOCIATES CONSULTING ENGINEERS
10 SOUTH WABASH AVENUE 706 CHICAGO, ILLINOIS