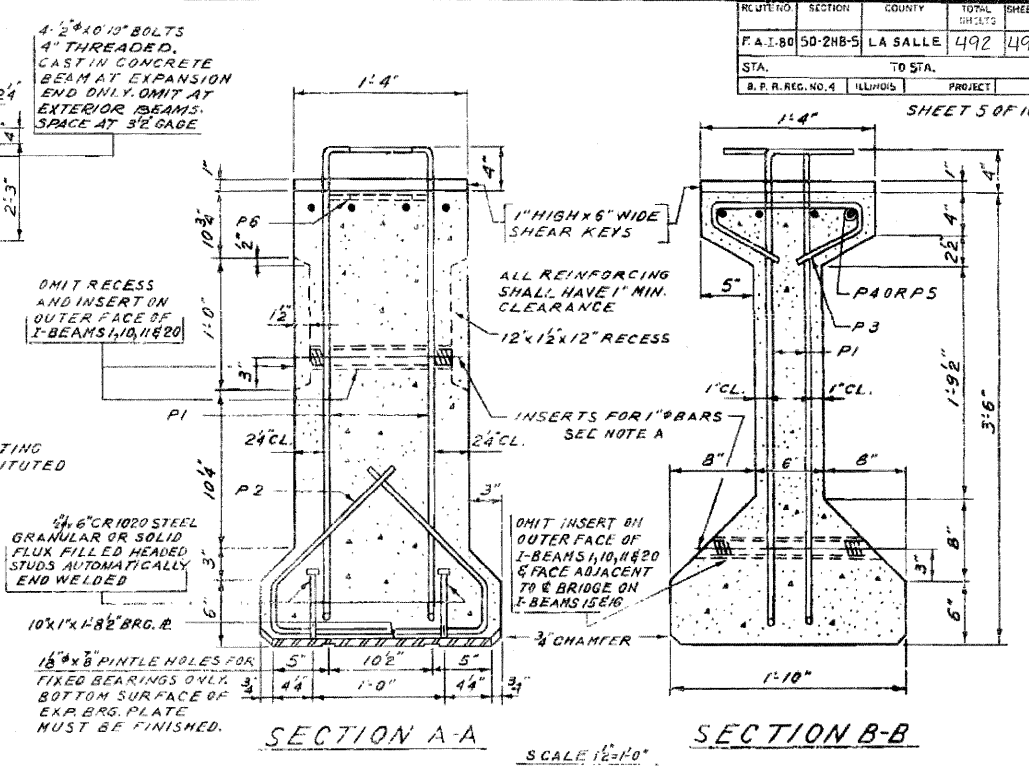


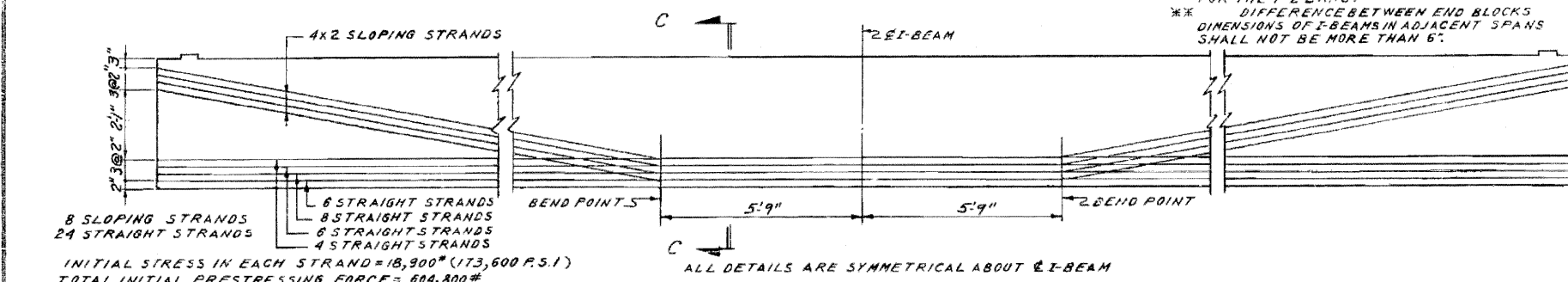
ELEVATION OF 57'9" SPAN I-BEAMS
SCALE 1/2"=1'-0"



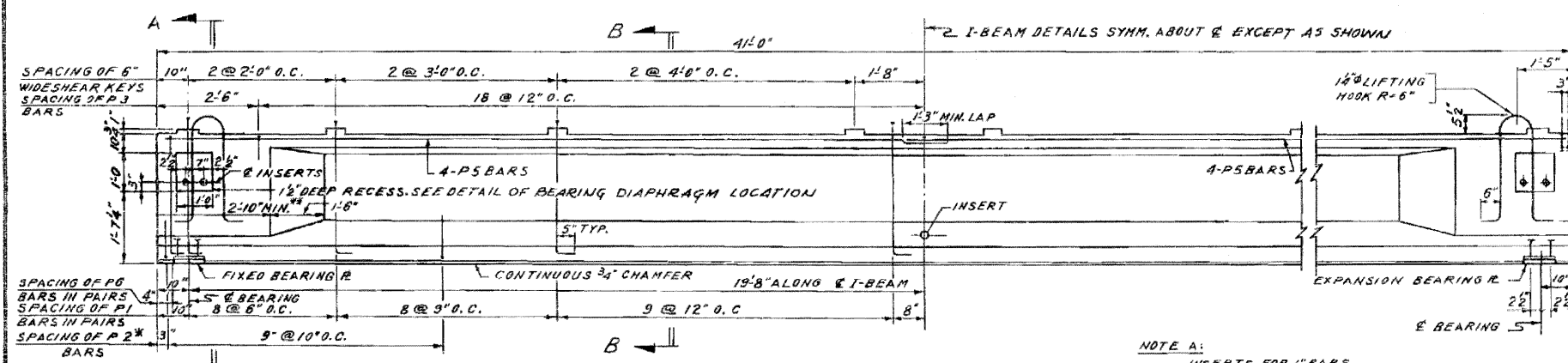
SECTION A-A SCALE 1/2"=1'-0"
SECTION B-B

NOTE:
 * ALTERNATE STEEL BANDING .035" MEETING THE APPROVAL OF THE ENGINEER MAY BE SUBSTITUTED FOR THE P2 BARS.
 ** DIFFERENCE BETWEEN END BLOCKS DIMENSIONS OF I-BEAMS IN ADJACENT SPANS SHALL NOT BE MORE THAN 6".

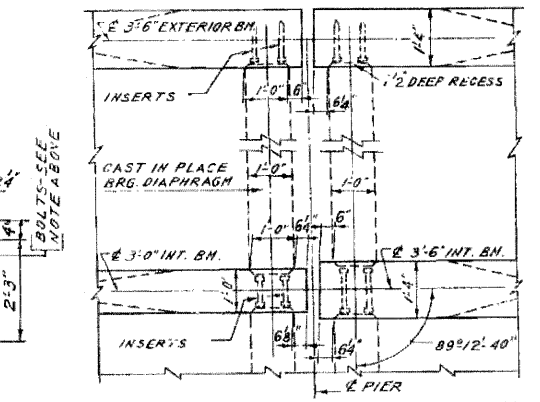
4" x 6" CR1020 STEEL GRANULAR OR SOLID FLUX FILLED HEADED STUDS AUTOMATICALLY END WELDED
 10" x 1" x 1/8" BRG. P.
 16" x 8" PINTLE HOLES FOR FIXED BEARINGS ONLY. 3" BOTTOM SURFACE OF EKR BRG. PLATE MUST BE FINISHED.



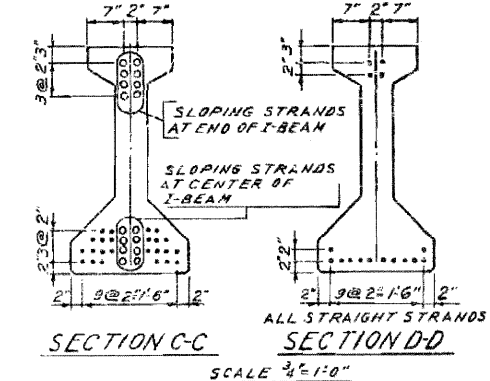
DETAILS OF PRESTRESSING STEEL FOR 57'9" SPANS I-BEAMS



ELEVATION OF I-BEAMS Nos. 1 & 10, 39'4" SPANS
SCALE 1/2"=1'-0"



BEARING DIAPHRAGM LOCATION
(FOR INTERIOR DIAPHRAGM LOCATION SEE SHT. 7)



SECTION C-C SCALE 3/4"=1'-0"
SECTION D-D

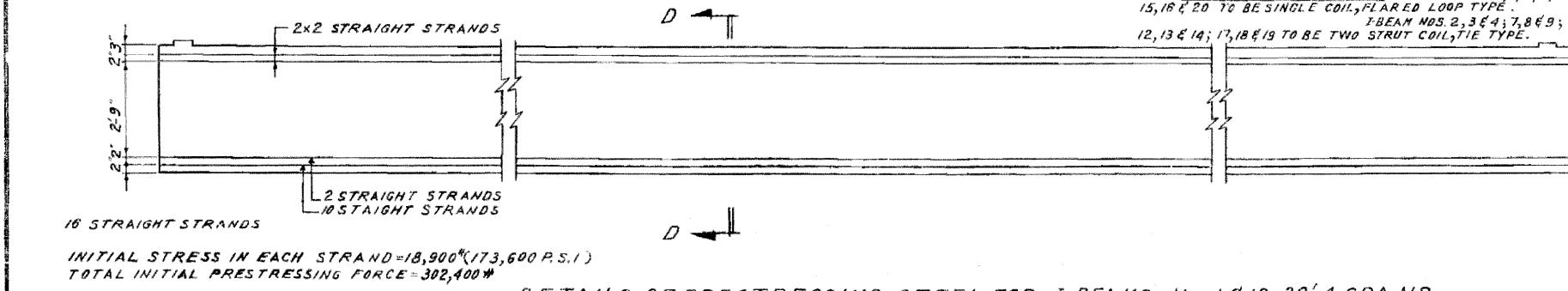
NOTE A:
 INSERTS FOR I-BARS AT BEARING DIAPHRAGMS. I-BEAM NOS. 1, 10, 11 & 20 TO BE SINGLE COIL, FLARED LOOP TYPE. I-BEAM NOS. 2 THRU 9 & 12 THRU 19 TO BE TWO STRUT COIL, TIE TYPE. AT INTERIOR DIAPHRAGMS, I-BEAM NOS. 1, 5, 6, 10, 11, 15, 16 & 20 TO BE SINGLE COIL, FLARED LOOP TYPE. I-BEAM NOS. 2, 3 & 4; 7, 8 & 9; 12, 13 & 14; 17, 18 & 19 TO BE TWO STRUT COIL, TIE TYPE.

NOTES
 PRECAUTION SHALL BE TAKEN TO PROTECT THE FINISHED BOTTOM SURFACE OF THE EXPANSION BEARING PLATES CAST INTO THE BEAMS FROM RUST OR OTHER DAMAGE. THE FINISHED SURFACE SHALL NOT BE PAINTED. PRECAST PRESTRESSED CONCRETE I-BEAMS ARE DESIGNED IN ACCORDANCE WITH THE A.A.S.H.O. STANDARD SPECIFICATIONS FOR HIGHWAY BRIDGES, 1957, AND THE CRITERIA FOR PRESTRESSED CONCRETE BRIDGES, 1954, OF THE BUREAU OF PUBLIC ROADS.
 PRESTRESSING STRANDS SHALL CONSIST OF UNCOATED SEVEN-WIRE STRANDS WHICH HAVE A NOMINAL DIAMETER OF 7/16" AND A CROSS-SECTIONAL AREA OF 0.1089 SQUARE INCHES.
 ALL REINFORCING STEEL, PRESTRESSING STRANDS, LIFTING HOOKS, INSERTS, BEARING PLATES AND OTHER ITEMS WHICH ARE CAST INTO THE PRECAST CONCRETE I-BEAMS SHALL BE INCLUDED IN THE CONTRACT UNIT PRICE PER LINEAL FOOT FOR "FURNISHING AND ERECTING PRECAST PRESTRESSED CONCRETE I-BEAMS." 42" OR 66"
 PRESTRESSED CONCRETE I-BEAMS SHALL BE LIFTED ONLY BY THE LIFTING HOOKS PROVIDED BY THE TOP FLANGES AT THE ENDS OF THE BEAMS.
 SEE SPECIAL PROVISIONS FOR ADDITIONAL INFORMATION REGARDING MATERIALS, PRESTRESSING EQUIPMENT AND OPERATIONS, CONSTRUCTION AND HANDLING METHODS, AND OTHER REQUIREMENTS FOR THE PRECAST PRESTRESSED CONCRETE I-BEAMS.
 STEEL PILING LIFTING HOOKS SHALL BE NON-DEFORMED BARS OF STANDARD OR INTERMEDIATE GRADE BILLET STEEL, ALTERNATE LIFTING HOOKS MEETING THE APPROVAL OF THE ENGINEER MAY BE SUBSTITUTED FOR THE 1 1/2" LIFTING HOOK SHOWN.

BAR SCHEDULE - 42" I-BM.

MARK	SIZE	TYPE	LENGTH	B	C	D	E	F	H	K
P1	#5	B	4'-9"	05	3'	08				
P2	#3	A	4'-9"	13	03	11	08	03	13	10
P3	#3	C	2'-7"	06	02	12	02	06	02	05
P4	#6	STRT.	30'-3"							
B5	#6	STRT.	21'-0"							
P6	#5	B	4'-3"	05	3'	08				

ALL DIMENSIONS GIVEN ARE OUT TO OUT OF BARS



DETAILS OF PRESTRESSING STEEL FOR I-BEAMS Nos. 1 & 10, 39'4" SPANS

DETAILS OF 42 IN. PRECAST PRESTRESSED CONCRETE I-BEAMS GRADE SEPARATION
 S.A. ROUTE 8 (UTICA ROAD)
 OVER F.A.I. ROUTE 80
 F.A. PROJECT
 F.A.I. ROUTE 80 SECTION 50-2HB-5
 LA SALLE COUNTY
 STATION 895+86.16

△ SHEET ADDED 4-6-10

FOR INFORMATION ONLY

ALFRED BENESCH & ASSOCIATES CONSULTING ENGINEER
 10 SOUTH WABASH AVENUE 706 CHICAGO, ILLINOIS