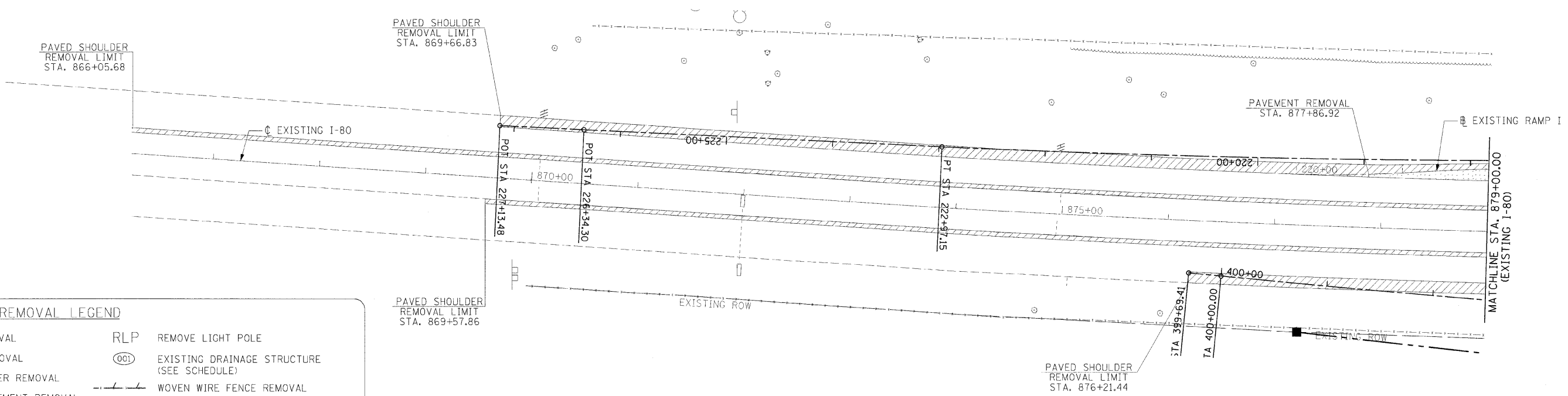


F.A.I. RTE.	SECTION	COUNTY	TOTAL SHEETS	SHEET NO.
80	150-318K	LASALLE	492	56
STA. 866+00.00 TO STA. 894+00.00				
FED. ROAD DIST. NO.			ILLINOIS FED. AID PROJECT	

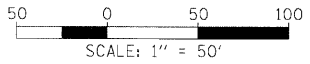
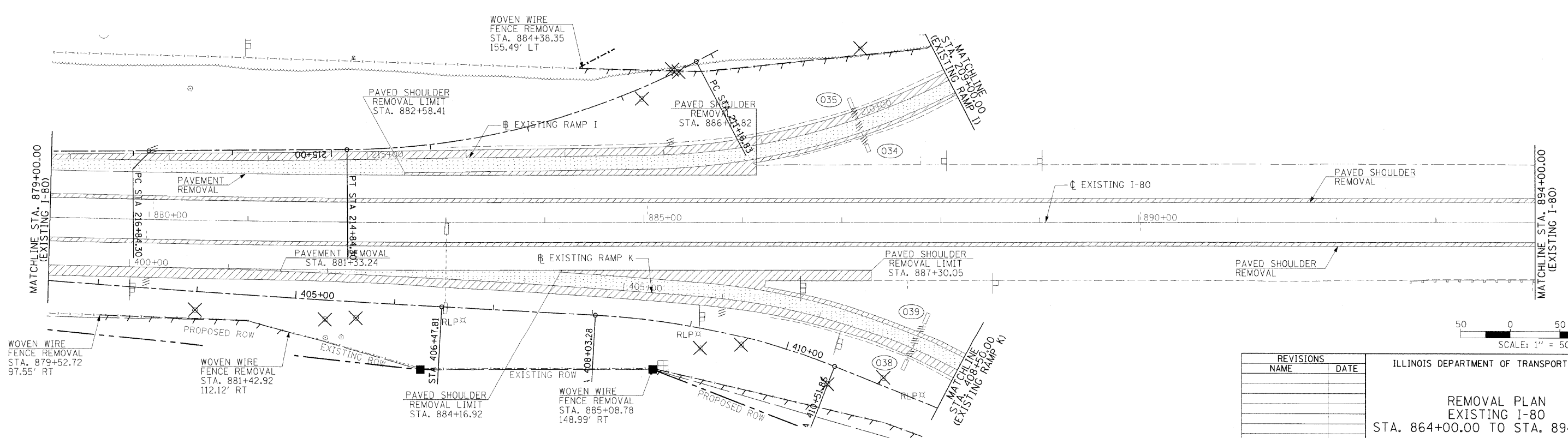


**REMOVAL LEGEND**

	CULVERT REMOVAL		REMOVE LIGHT POLE
	PAVEMENT REMOVAL		EXISTING DRAINAGE STRUCTURE (SEE SCHEDULE)
	PAVED SHOULDER REMOVAL		WOVEN WIRE FENCE REMOVAL
	DRIVEWAY PAVEMENT REMOVAL		COMBINATION CURB AND GUTTER REMOVAL
	MEDIAN REMOVAL		GUARDRAIL REMOVAL
	ITEM TO BE REMOVED		
	ITEM TO BE RELOCATED		

**NOTES:**

- EXISTING SIGN REMOVALS ARE SHOWN ON THE SIGN REMOVAL PLAN.
- EXISTING PIPE UNDERDRAINS AND EXISTING HEADWALLS FOR PIPE UNDERDRAINS ARE TO BE REMOVED AND INCLUDED WITH PAYMENT FOR EARTH EXCAVATION.



REVISIONS	
NAME	DATE

ILLINOIS DEPARTMENT OF TRANSPORTATION

**REMOVAL PLAN**  
EXISTING I-80  
STA. 864+00.00 TO STA. 894+00.00

SCALE: VERT. N/A  
HORIZ. 1"=50'

DRAWN BY MEW  
CHECKED BY

**HANSON**  
Hanson Professional Services Inc.  
1525 South Sixth Street  
Springfield, Illinois 62703-2886  
Offices Nationwide

MODEL NAME = 1:80 Sheet 1  
PROJECT NAME = I-80  
FILE NAME = I-80\_Removal\_Plan.dgn  
PLOT SCALE = 1/8" = 1'-0"  
USER NAME = JohnM88344

LAYOUT	MEW	12/20/05
DRAWN	MEW	12/20/05
REVIEWED	MTM	10/17/07