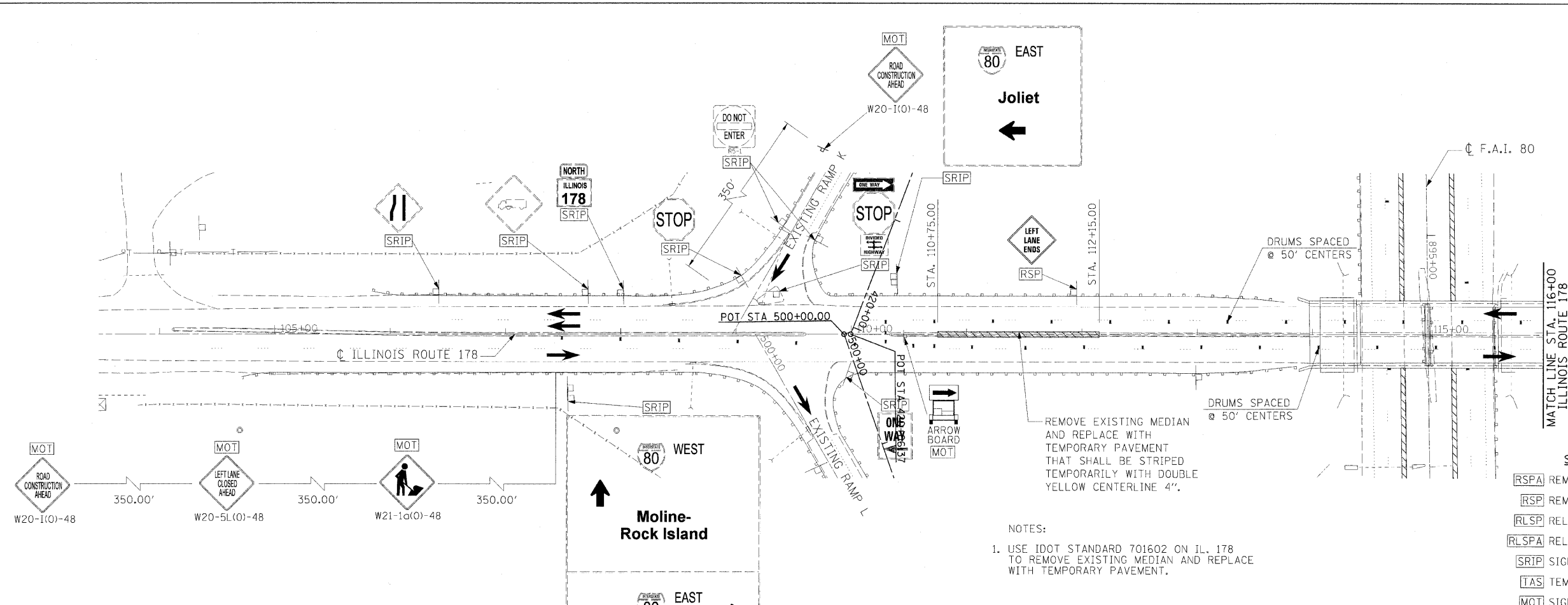
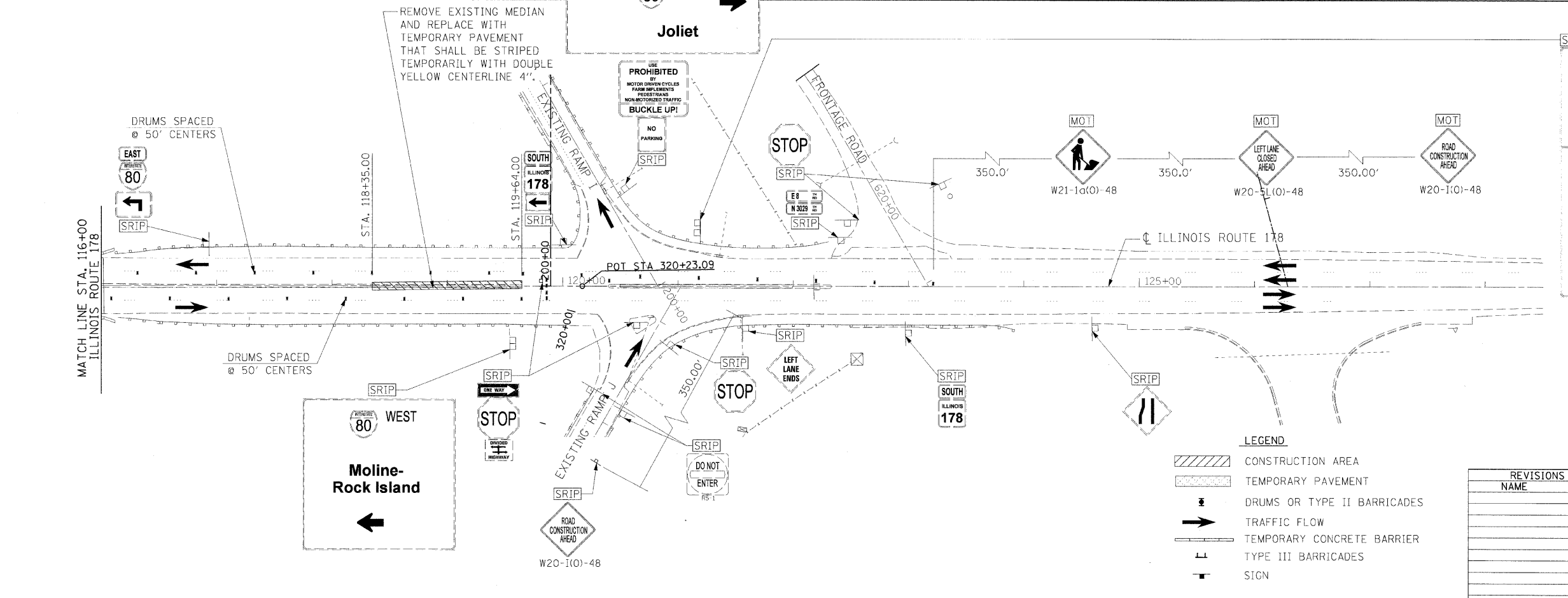


F.A.I. RTE.	SECTION	COUNTY	TOTAL SHEETS	SHEET NO.
80	150-31HBK	LASALLE	492	124
STA.		TO STA.		
FED. ROAD DIST. NO.		ILLINOIS FED. AID PROJECT		

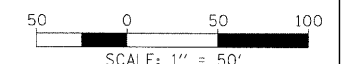


- SIGNING LEGEND**
- [RSPA] REMOVE SIGN PANEL ASSEMBLY (AT END OF STAGE)
 - [RSP] REMOVE SIGN PANEL (AT END OF STAGE)
 - [RLSP] RELOCATE SIGN PANEL
 - [RLSPA] RELOCATE SIGN PANEL ASSEMBLY
 - [SRIP] SIGN TO REMAIN IN PLACE
 - [TAS] TEMPORARY ACCESS SIGNS
 - [MOT] SIGNS TO BE PAID FOR THROUGH TRAFFIC CONTROL STANDARDS

NOTES:
 1. USE IDOT STANDARD 701602 ON IL. 178 TO REMOVE EXISTING MEDIAN AND REPLACE WITH TEMPORARY PAVEMENT.



- LEGEND**
- [Hatched Box] CONSTRUCTION AREA
 - [Dotted Box] TEMPORARY PAVEMENT
 - [Symbol] DRUMS OR TYPE II BARRICADES
 - [Arrow] TRAFFIC FLOW
 - [Symbol] TEMPORARY CONCRETE BARRIER
 - [Symbol] TYPE III BARRICADES
 - [Symbol] SIGN



REVISIONS	
NAME	DATE

ILLINOIS DEPARTMENT OF TRANSPORTATION

**MAINTENANCE OF TRAFFIC
 PRESTAGE 1 PHASE I
 SHEET 4 OF 15**

SCALE: VERT. N/A
 HORIZ. 1"=50'

DRAWN BY MEW
 CHECKED BY

HANSON
 Hanson Professional Services Inc.
 1525 South Sixth Street
 Springfield, Illinois 62703-2886
 Offices Nationwide

MODEL NAME = PS 1 Phase 1 Sht 4
 PLOT DATE = 12/23/2009
 PLOT SCALE = 50.00000 / 1"
 USER NAME = John+020944

LAYOUT	5/27/05
MEW	5/27/05
DRAWN	5/27/05
REVIEWED	10/1/07