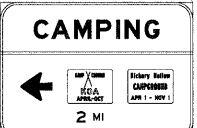
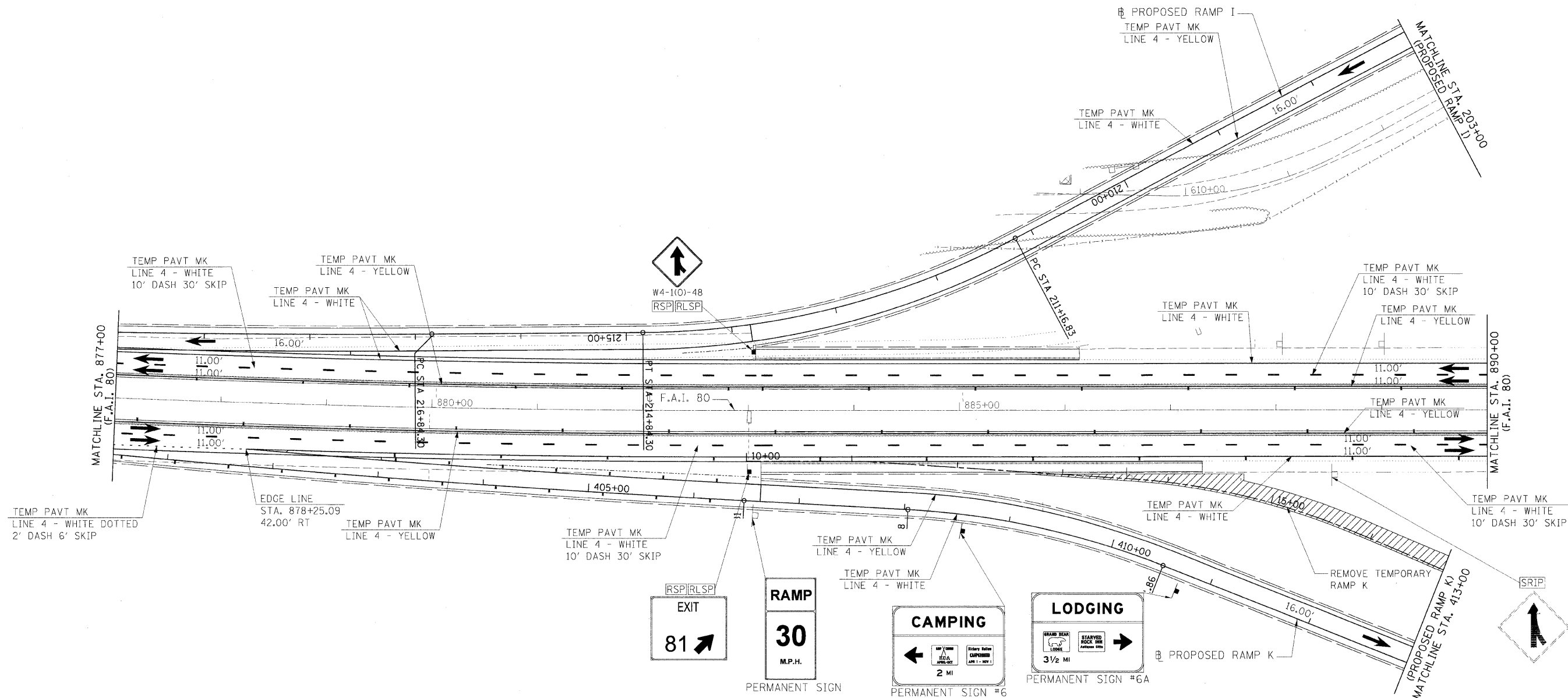


F.A.I. RTE.	SECTION	COUNTY	TOTAL SHEETS	SHEET NO.
80	150-3H8K	LASALLE	492	178
STA.		TO STA.		
FED. ROAD DIST. NO.		ILLINOIS FED. AID PROJECT		



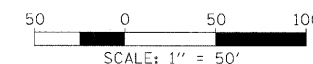
SIGNING LEGEND

- [RSPA] REMOVE SIGN PANEL ASSEMBLY (AT END OF STAGE)
- [RSP] REMOVE SIGN PANEL (AT END OF STAGE)
- [RLSP] RELOCATE SIGN PANEL
- [RLSPA] RELOCATE SIGN PANEL ASSEMBLY
- [SRIP] SIGN TO REMAIN IN PLACE
- [TAS] TEMPORARY ACCESS SIGNS
- [MOT] SIGNS TO BE PAID FOR THROUGH TRAFFIC CONTROL STANDARDS

LEGEND

- [Hatched Box] PREVIOUSLY CONSTRUCTED PERMANENT SHOULDER
- [Cross-hatched Box] CONSTRUCTION AREA
- [Dotted Box] TEMPORARY PAVEMENT
- [Drum Symbol] DRUMS OR TYPE II BARRICADES
- [Arrow Symbol] TRAFFIC FLOW
- [Barrier Symbol] TEMPORARY CONCRETE BARRIER
- [T-bar Symbol] TYPE III BARRICADES
- [T-bar Symbol] SIGN

NOTE:
SEE PERMANENT SIGNING
PLAN SHEETS FOR MORE
INFORMATION.



REVISIONS	
NAME	DATE

ILLINOIS DEPARTMENT OF TRANSPORTATION

**MAINTENANCE OF TRAFFIC
STAGE 2 PHASE II
SHEET 11 OF 14**

SCALE: VERT. N/A
HORIZ. 1"=50'
DATE

DRAWN BY MEW
CHECKED BY



MODEL NAME = S2 Phase II Sht 2
 PLOT DATE = 12/23/2009
 PLOT SCALE = 50.000000000000
 USER NAME = jjohnson09/14
 LAYOUT MEW 8/27/05
 DRAWN MEW 8/27/05
 REVIEWED MTM 10/1/07