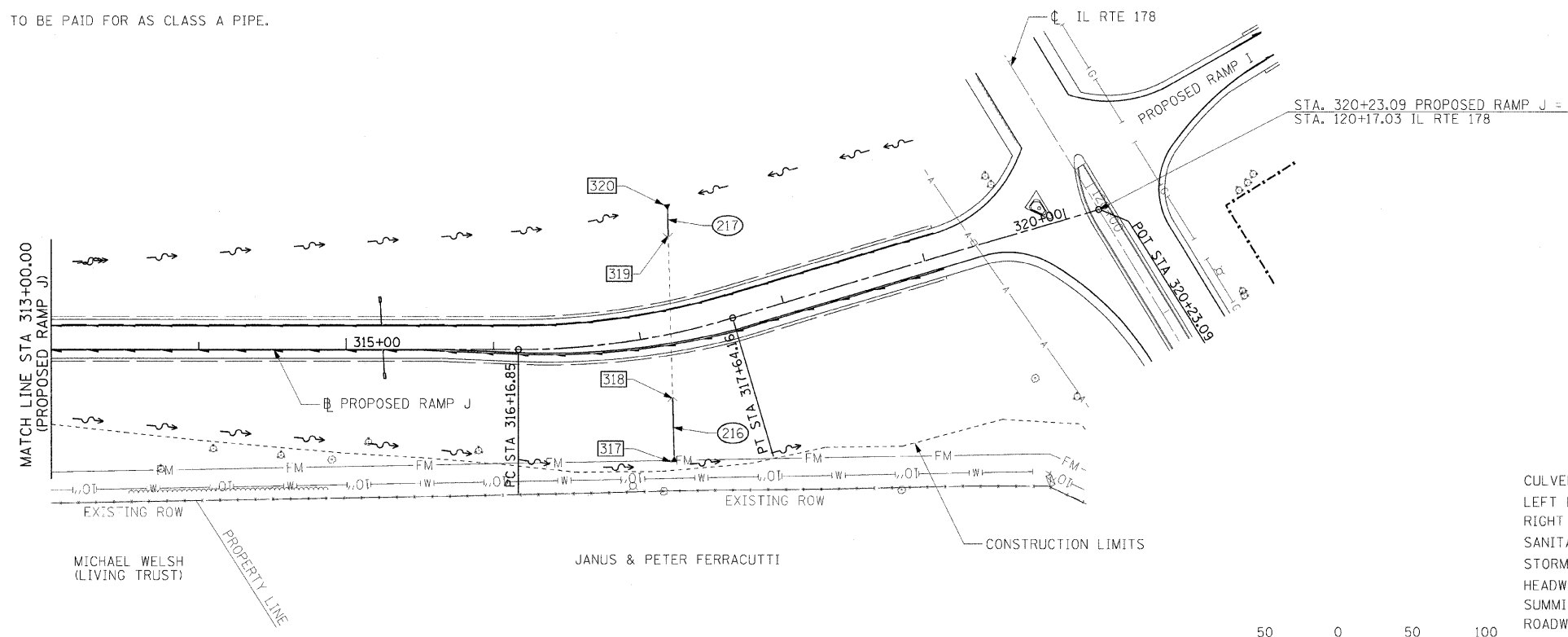


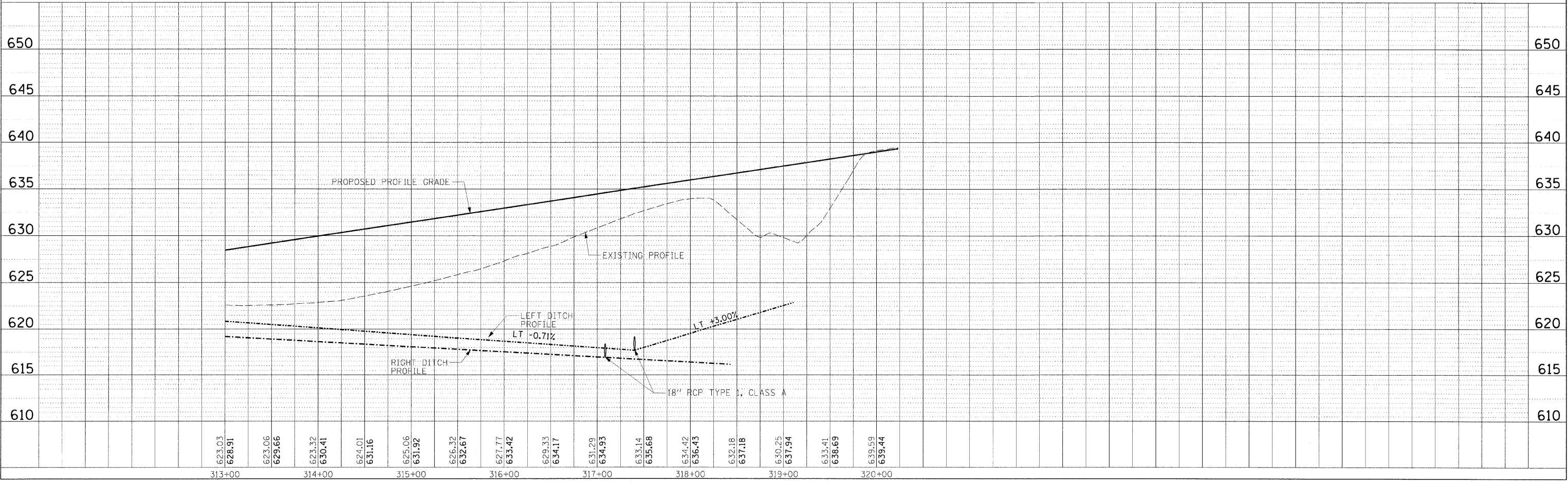
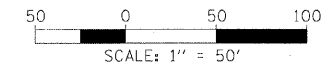
F.A.I. RTE.	SECTION	COUNTY	TOTAL SHEETS	SHEET NO.
80	(50-3)HBK	LASALLE	492	205
STA. 313+00.00		TO STA. 320+23.09		
FED. ROAD DIST. NO.		ILLINOIS FED. AID PROJECT		

- NOTES:
- SEE DRAINAGE PIPE AND STRUCTURE SCHEDULES FOR DRAINAGE INFORMATION.
  - SEE ROADWAY PLAN & PROFILE SHEETS FOR VERTICAL CURVE INFORMATION AND PROPOSED DITCH GRADES.
  - CORRUGATED METAL PIPE (CMP) TO BE PAID FOR AS CLASS D PIPE.
  - REINFORCED CONCRETE PIPE (RCP) TO BE PAID FOR AS CLASS A PIPE.



**DRAINAGE LEGEND**

EX	PR	EX	PR
CULVERT LINE	FLARED END SECTION	INLET	MANHOLE
LEFT DITCH PROFILE	PIPE DRAIN HEADWALL	RIPRAP	PIPE CALL-OUT
RIGHT DITCH PROFILE	STORM SEWER	SUMMIT	END OF PIPE LOCATION
SANITARY SEWER	HEADWALL	ROADWAY DITCH FLOW	PIPE UNDERDRAIN (DOUBLE)
STORM SEWER	SWALE	PIPE UNDERDRAIN (SINGLE)	



PLAN

DATE	BY

SURVEYED  
 ALIGNMENT CHECKED  
 PLOTTED FILE NAME  
 NO.

**HANSON**  
 Hanson Professional Services Inc.  
 1525 South Sixth Street  
 Springfield, Illinois 62703-2886  
 Offices Nationwide

PROFILE

DATE	BY

SURVEYED  
 GRADES CHECKED  
 PLOTTED FILE NAME  
 NO.

MODEL NAME = RAMP\_1\_2  
 DATE = 01/12/06  
 FILE NAME = C:\SW\Projects\66542\C-680DRA.dgn  
 PLOT SCALE = 50.0000 / 1" = 50'  
 USER NAME = JGm00044  
 LAYOUT NET 01/12/06  
 DRAWN NET 01/12/06  
 REVIEWED RJC 08/31/06