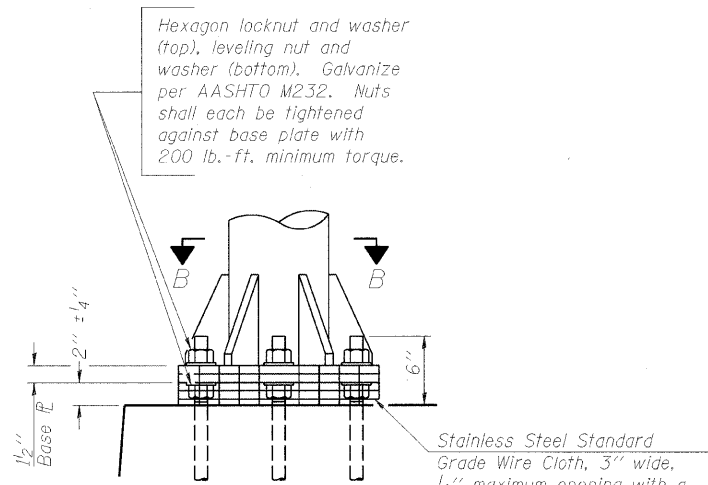
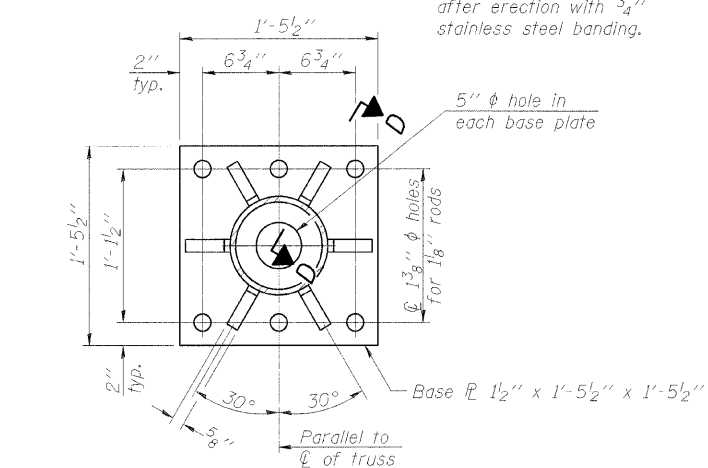


F.A.I. RTE.	SECTION	COUNTY	TOTAL SHEETS	SHEET NO.
80	150-318BK	LASALLE	492	252
STA.		TO STA.		
FED. ROAD DIST. NO.		ILLINOIS FED. AID PROJECT		

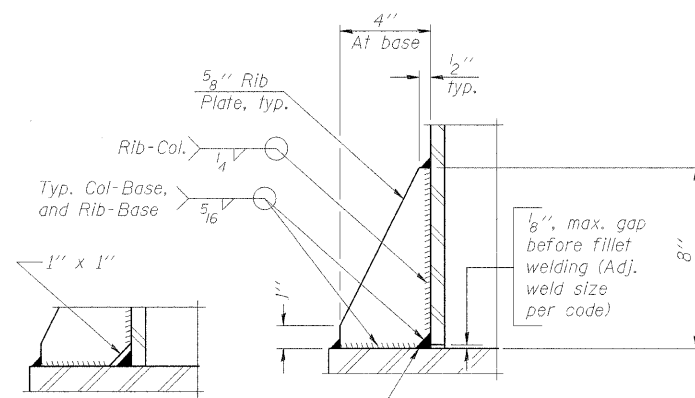


**DETAIL B**

Ribs shall be cut to fit slope of pipe.

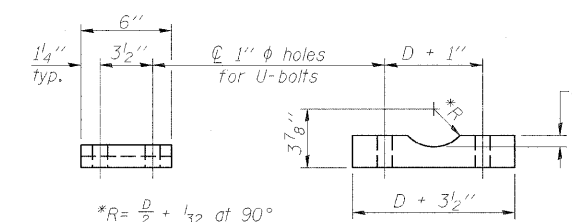


**SECTION B-B**



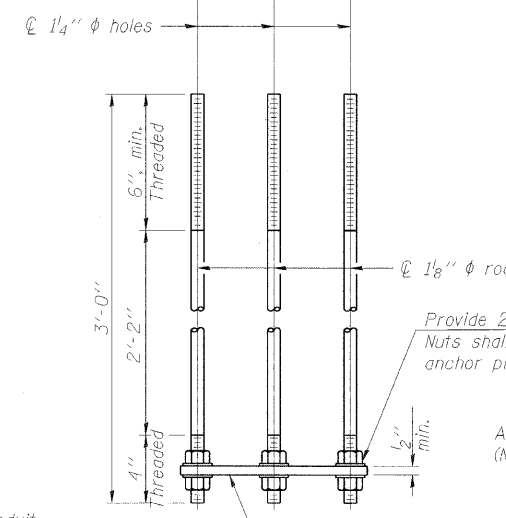
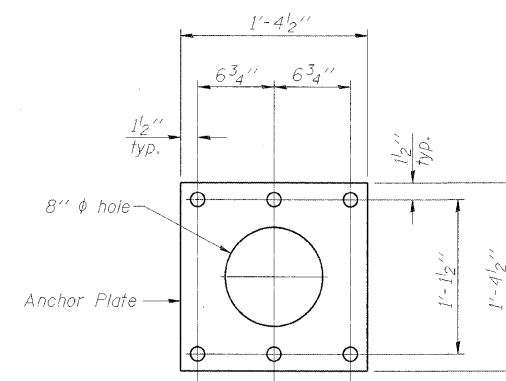
**SECTION D-D**

\*\* Alternate detail if welding col. to base plate first, then snip inside corner of ribs. Terminate weld on rib 1/4" from snip.

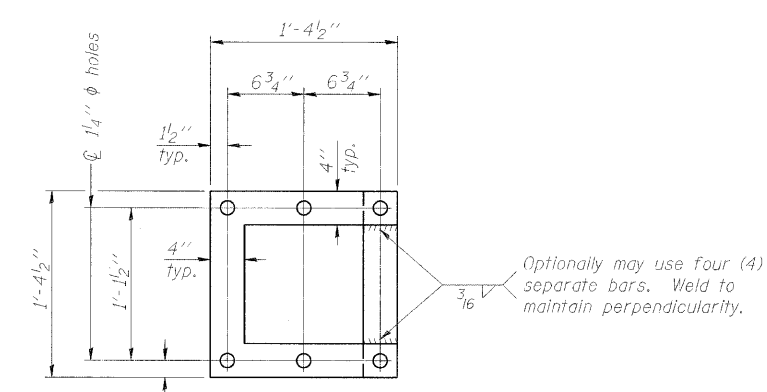


**SADDLE SHIM DETAIL**

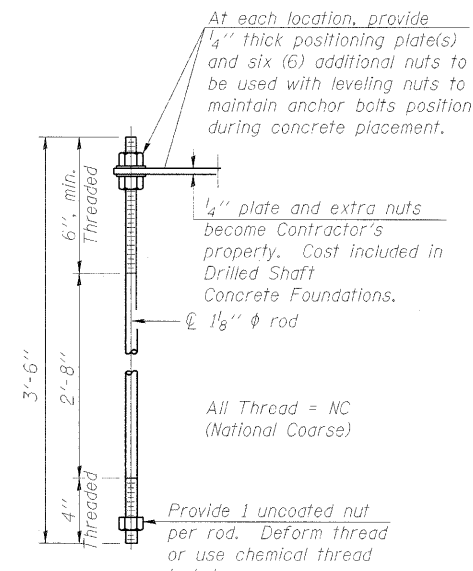
ASTM B26 Alloy 356-F  
or  
ASTM B209 Alloy 6061-T651  
(4 required per sign truss)



**ANCHOR ROD DETAIL**  
Spread Footing Foundation

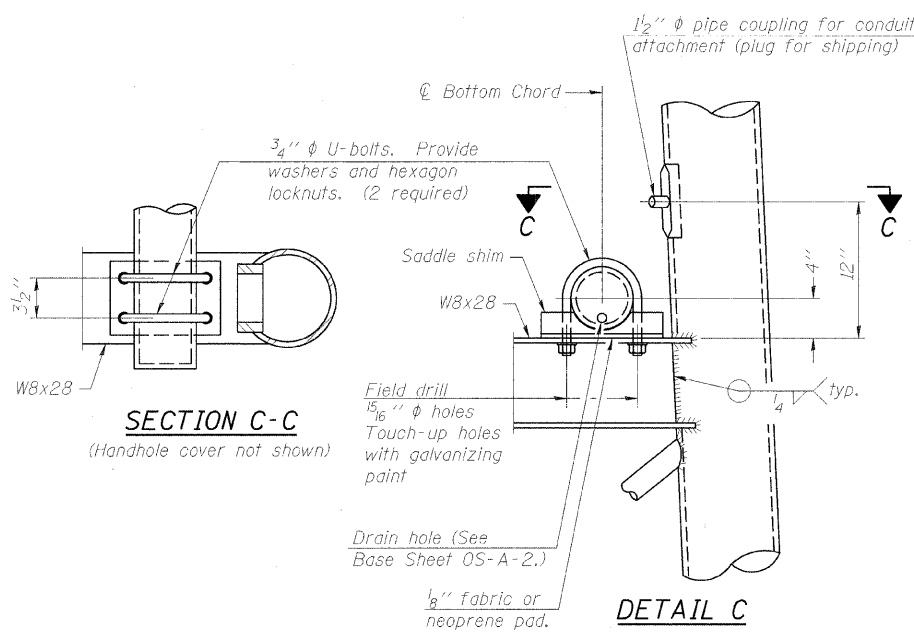


**POSITIONING PLATE(S)**



**ANCHOR ROD DETAIL**  
Drilled Shaft Foundation

Anchor rods shall conform to AASHTO M314 Grade 36 or 55 and meet Charpy V-Notch (CVN) energy of 15 lb.-ft. at 40° F. Galvanize upper 12" per AASHTO M232. No welding shall be permitted on rods.



**SECTION C-C**

**DETAIL C**

**TYPE I-A TRUSS**  
8"  $\phi$  PIPE SUPPORT FRAME DETAILS

NUMBER	REVISION	DATE

**OVERHEAD SIGN STRUCTURES**  
**SUPPORT FRAME DETAILS ALUMINUM TRUSS**

REVISIONS	
NAME	DATE

ILLINOIS DEPARTMENT OF TRANSPORTATION

SIGNING PLAN  
OVERHEAD SIGN STRUCTURE

SCALE: VERT.  
HORIZ. N.T.S.  
DATE

DRAWN BY MOC  
CHECKED BY MLT

**HANSON**  
Hanson Professional Services Inc.  
1525 South Sixth Street  
Springfield, Illinois 62703-2886  
Offices Nationwide

MODEL NAME = 21 OS-A-4A  
PLOT DATE = 12/23/2009  
DRAWN BY = C.M. Exp. - C.C. 150550N.egm  
CHECKED BY = J.M. Exp. - C.C. 150550N.egm  
USER NAME = Johna009144

LAYOUT MOC 02/08/06  
DRAWN MOC 02/08/06  
REVIEWED M.T. 10/1/07