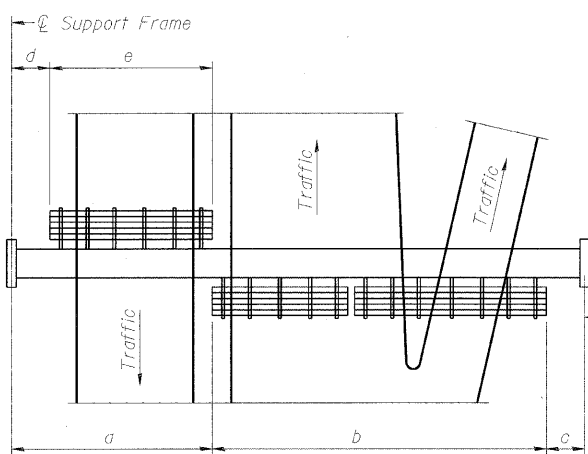


F.A.I. RTE.	SECTION	COUNTY	TOTAL SHEETS	SHEET NO.
80	150-318BK	LASALLE	492	253
STA.		TO STA.		
FED. ROAD DIST. NO.		ILLINOIS FED. AID PROJECT		

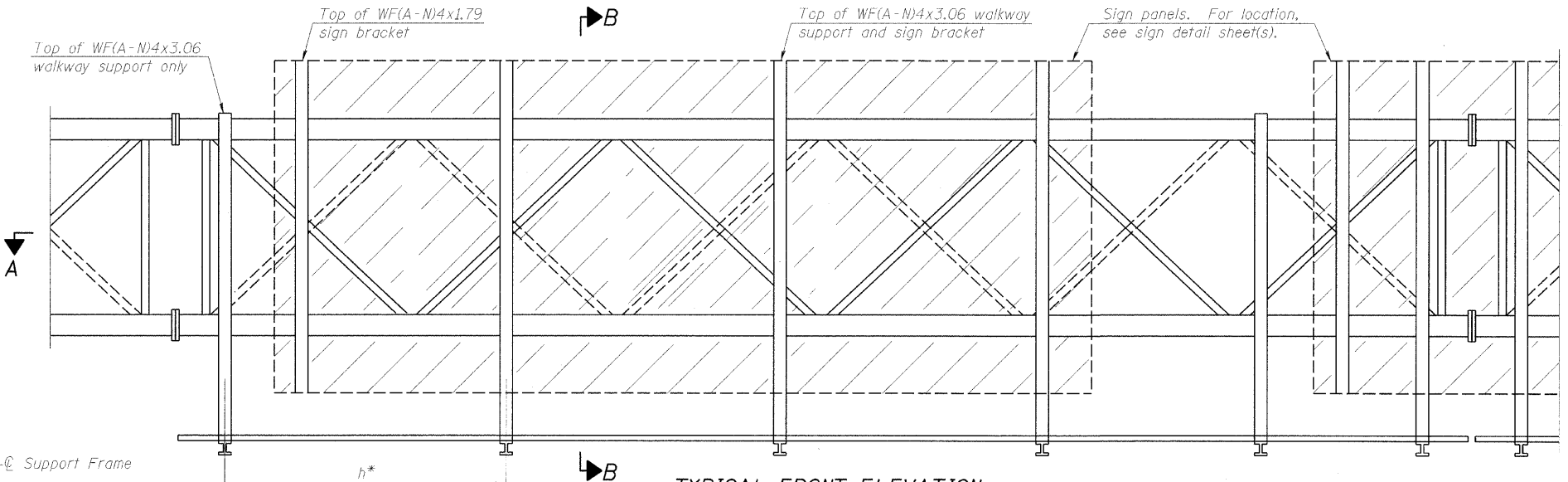


PLAN WALKWAY AND HANDRAIL SKETCH
(Road plan beneath truss varies)

BRACKET TABLE

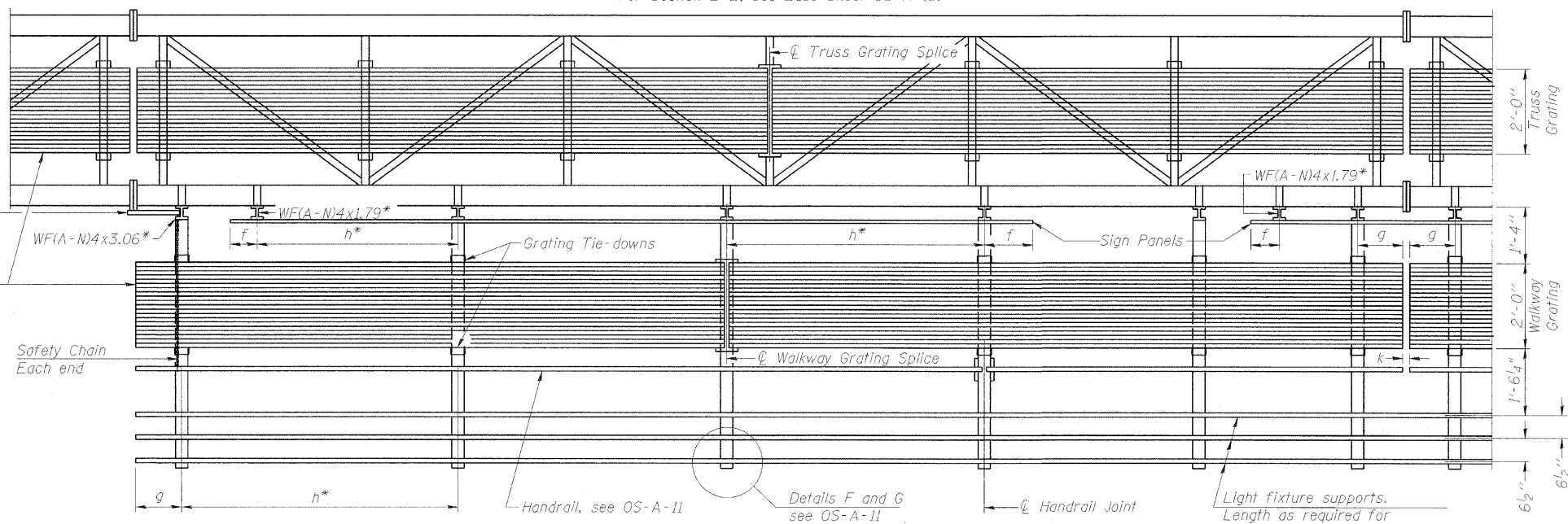
WF(A-N)4x1.79 or WF(A-N)4x3.06
ASTM B308, Alloy 6061-T6

Sign Width		Number Brackets Required
Greater Than	Less Than or Equal To	
	8'-0"	2
8'-0"	14'-0"	3
14'-0"	20'-0"	4
20'-0"	26'-0"	5
26'-0"	32'-0"	6



TYPICAL FRONT ELEVATION
With lights and handrail omitted for clarity.
For Section B-B, see Base Sheet OS-A-10.

** Alternate angle for safety chain attachment
Standard Aluminum Grating, see Details T and W
Safety Chain Each End



Walkway and Truss Grating width dimensions are nominal and may vary ±1/2" based on available standard widths.

Notes:
* Space walkway brackets WF(A-N)4x3.06 and sign brackets WF(A-N)4x1.79 for efficiency and within limits shown:
f = 12" maximum, 4" minimum (End of sign to center of nearest bracket)
g = 12" maximum, 4" minimum (End of walkway grating to center of nearest support bracket)
h = 6'-0" maximum (center to center of sign and/or walkway support brackets, WF(A-N)4x1.79 or WF(A-N)4x3.06)
k = 2" maximum gap between adjacent walkway grating sections and handrail ends
** If walkway bracket at safety chain location is behind sign, add angle to bracket, see Alternate Safety Chain Attachment on Base Sheet OS-A-11.
For Details T and W, Section B-B and Grating Splice Details see Base Sheet OS-A-10.
For Handrail Details see Base Sheet OS-A-11.

SECTION A-A

Handrail and walkway shall span a minimum of three brackets between splices and/or gap joints. Place all sign and walkway brackets as close to panel points as practical. Handrail joints, grating, and light support splices placed as needed.

Truss grating to facilitate inspection shall run full length (center to center of support frames) ±12" on overhead trusses. Cost of truss grating is included in "Overhead Sign Structure".

Structure Number	Station	a	b	c	d	e	Walkway Grating and Handrail Lengths
3S0501080L081.2	897+75	20'-0"	32'-0"	28'-0"	--	--	32'-0"

NUMBER	REVISION	DATE

OVERHEAD SIGN STRUCTURES ALUMINUM WALKWAY DETAILS

REVISIONS	
NAME	DATE

ILLINOIS DEPARTMENT OF TRANSPORTATION
SIGNING PLAN
OVERHEAD SIGN STRUCTURE

SCALE: VERT. HORIZ. N.T.S.
DATE: DRAWN BY MOC CHECKED BY MLT



MODEL NAME = 22 OS-A-9
PLOT DATE = 12/23/2009
PLOT SCALE = 1/8" = 1'-0"
USER NAME = John-02/24/4

LAYOUT	MOC	02/06/06
DRAWN	MOC	02/06/06
REVIEWED	MLT	10/1/07