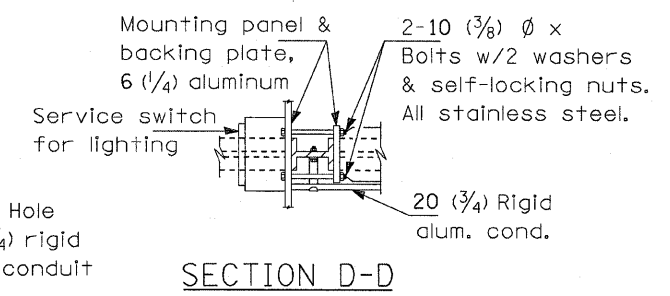
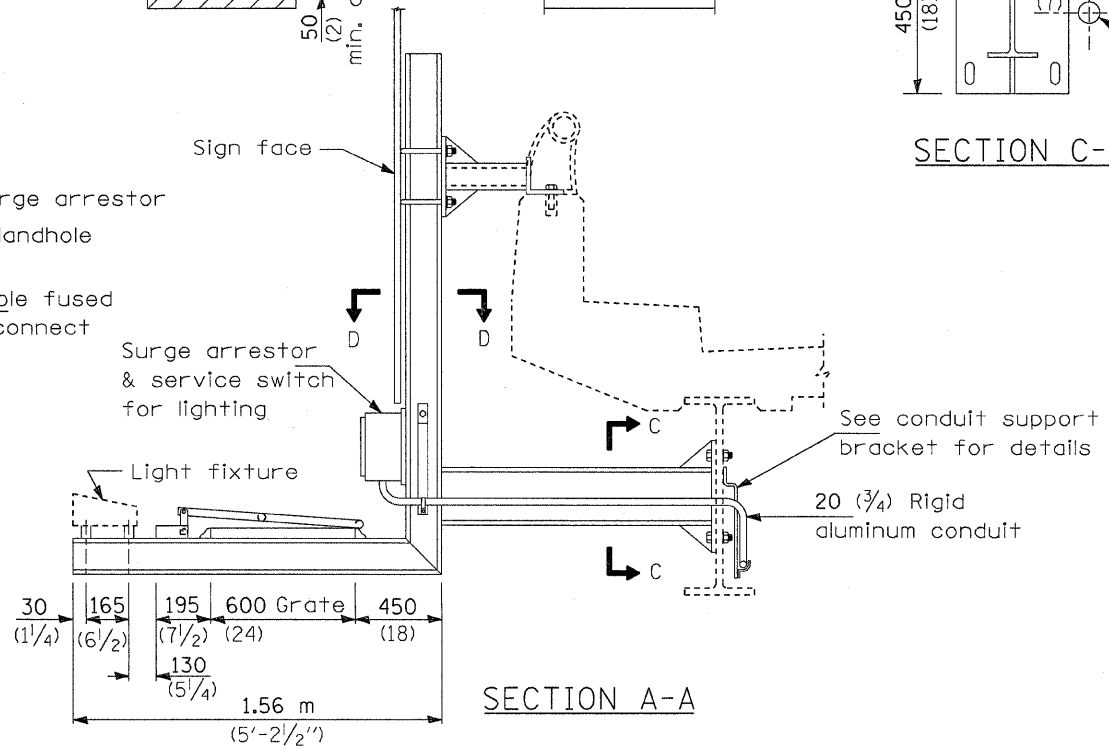
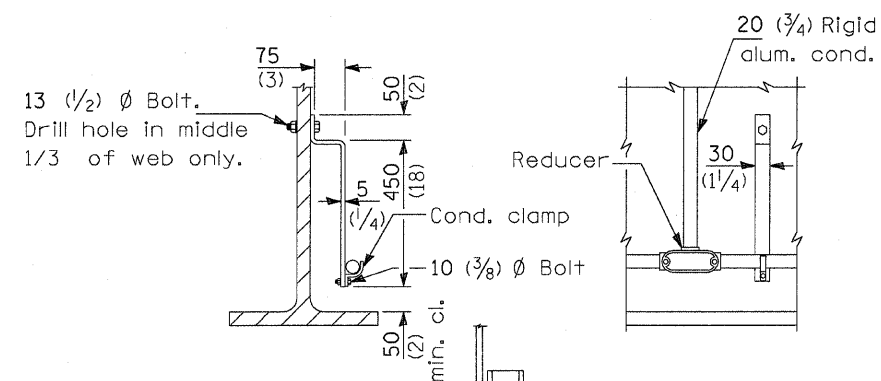
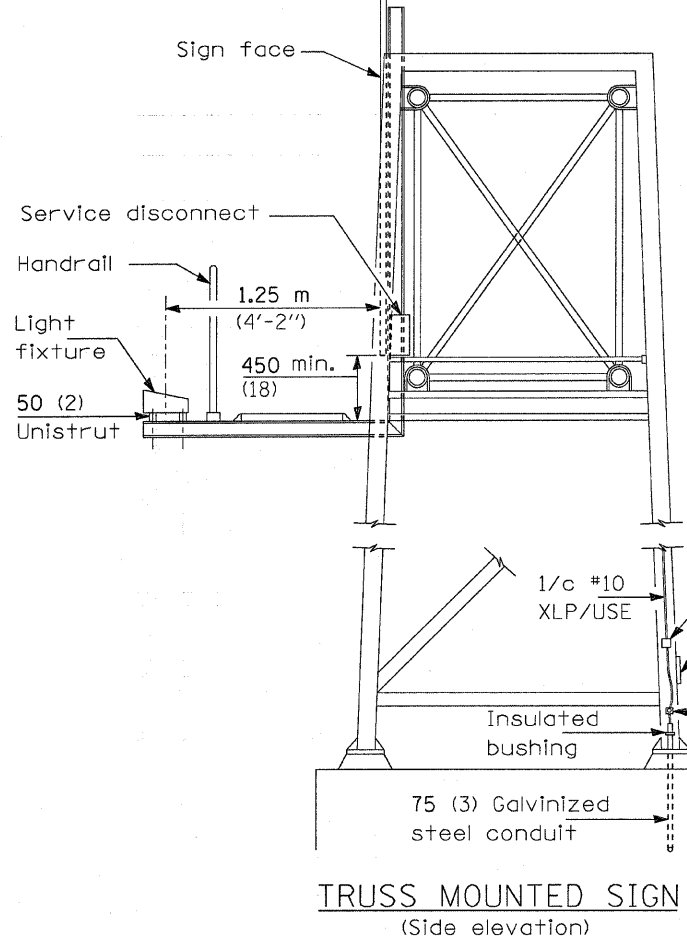
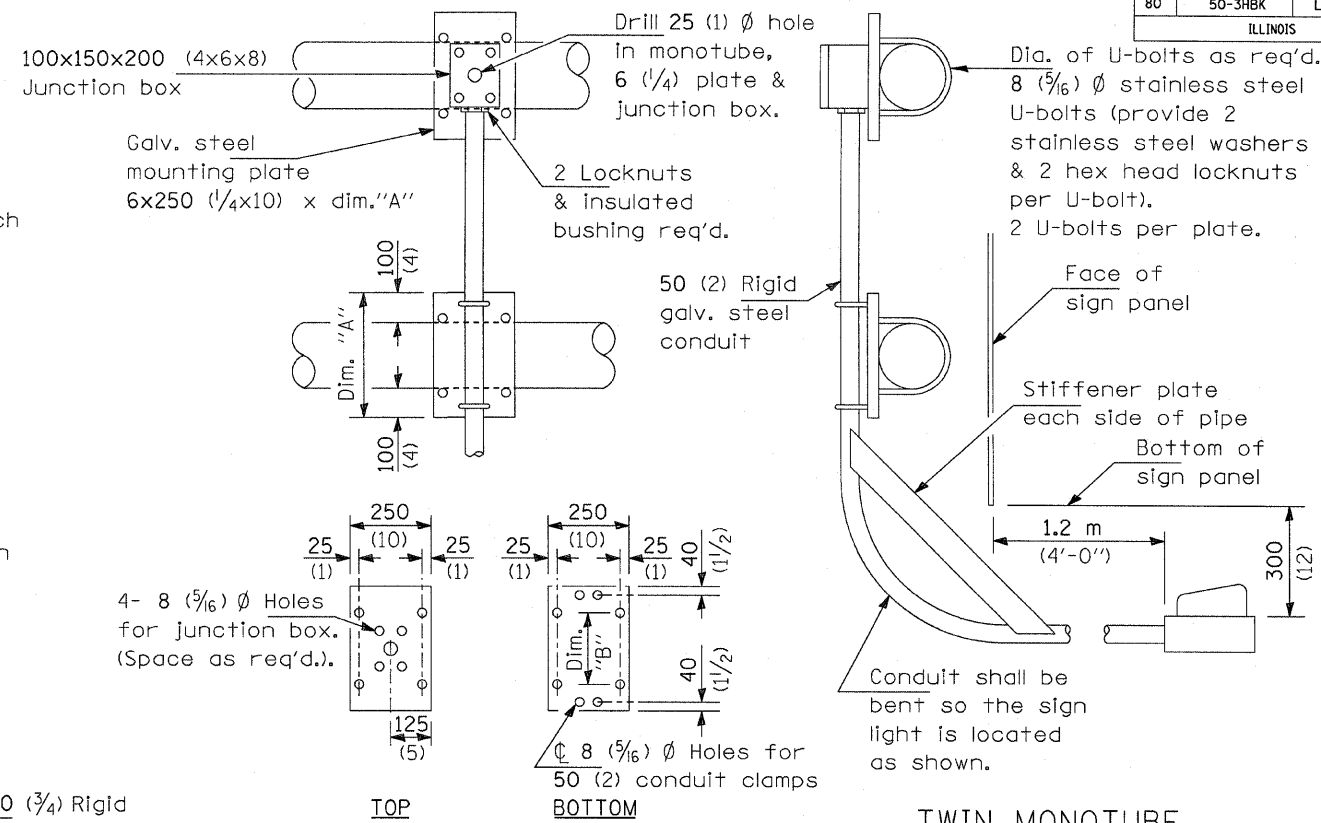
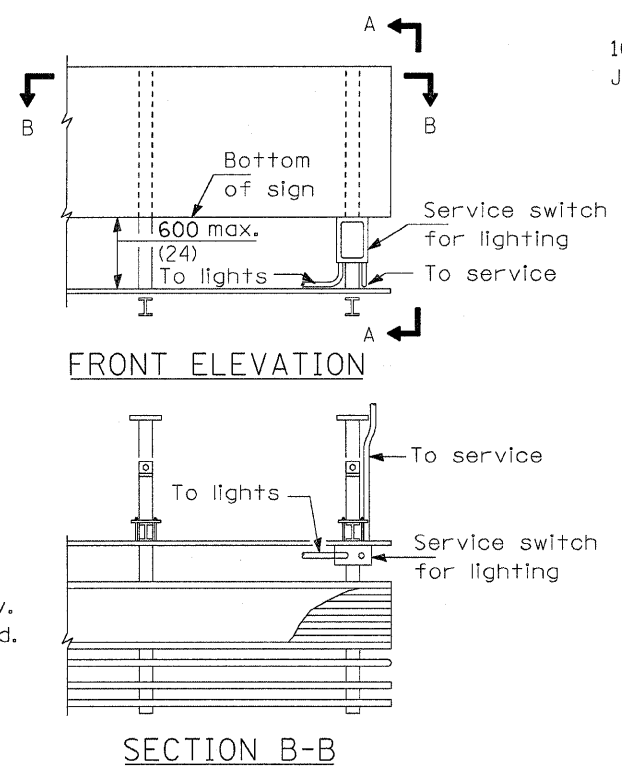
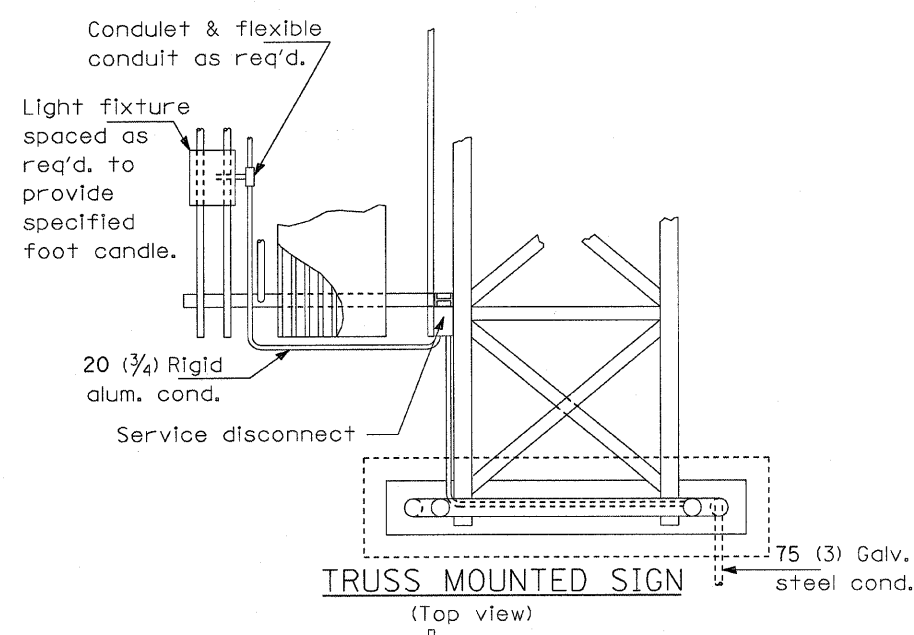


F.A.I. RTE.	SECTION	COUNTY	TOTAL SHEETS	SHEET NO.
80	50-3HBK	LASALLE	492	265

ILLINOIS FED. AID PROJECT



**GENERAL NOTES**

- All sign lighting fixtures shall have a minimum of 3 mounting points.
- All mounting hardware shall be stainless steel.
- All dimensions are in millimeters (inches) unless otherwise shown.

REVISIONS	
NAME	DATE

ILLINOIS DEPARTMENT OF TRANSPORTATION

**SIGN LIGHTING DETAILS**

Not to scale

PLOT DATE = Feb 16, 2018 - 01:43:48 PM  
 FILE NAME = c:\pwworkspace\p1\DOT\CARPENTER\U\dms1493\EP05502-ahc-lighting details.dgn  
 USER NAME = carpenterj