

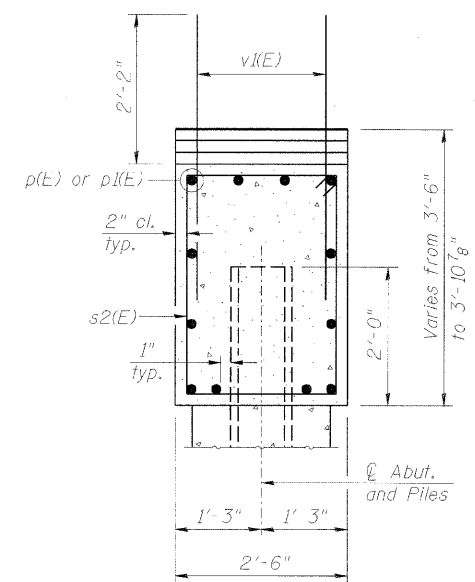
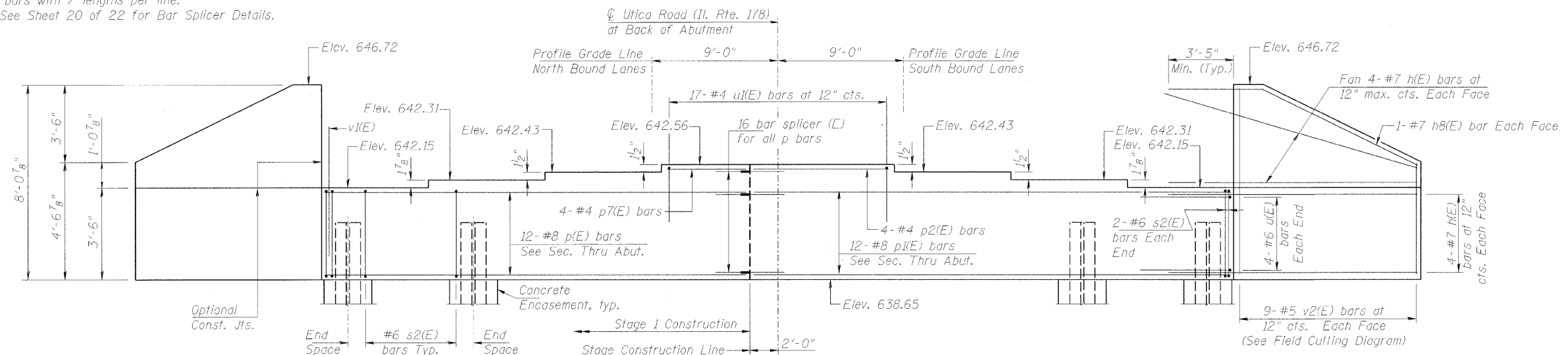
STATE OF ILLINOIS  
DEPARTMENT OF TRANSPORTATION

|                       |         |          |                  |           |
|-----------------------|---------|----------|------------------|-----------|
| ROUTE NO.             | SECTION | COUNTY   | TOTAL SHEETS     | SHEET NO. |
| F.A.U. Rte. 6120      | *       | LaSALLE  | 492              | 284       |
| FED. ROAD DIST. NO. 7 |         | ILLINOIS | FED. AID PROJECT |           |

\*50-3HBK

SHEET NO. 16  
22 SHEETS  
CONTRACT NO. 66542

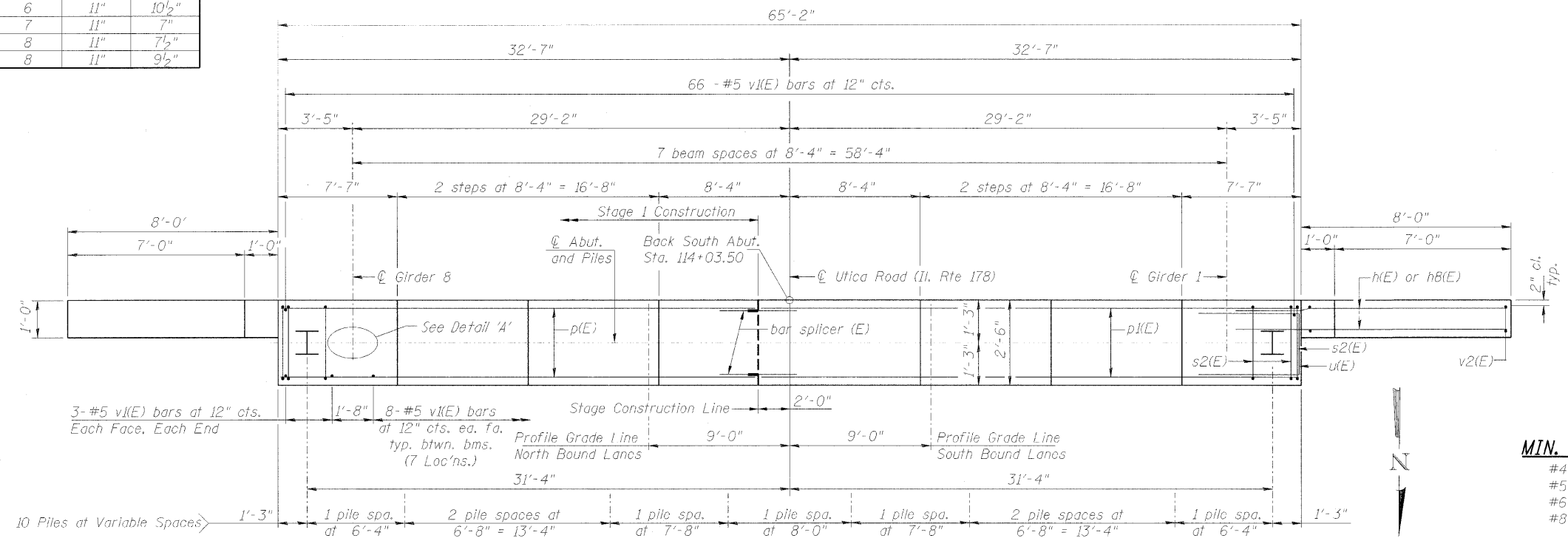
Notes:  
Pour steps monolithically with cap.  
Space reinforcement in cap to miss anchor bolts.  
Bars indicated thus, 4x2-#4 etc. Indicates 4 lines of bars with 2 lengths per line.  
See Sheet 20 of 22 for Bar Splicer Details.



**BAR s2(E) SPACING**

| Pile Spacing | No. of s2(E) | s2(E) Spacing | End Spaces |
|--------------|--------------|---------------|------------|
| 6'-4"        | 6            | 11"           | 10 1/2"    |
| 6'-8"        | 7            | 11"           | 7"         |
| 7'-8"        | 8            | 11"           | 7 1/2"     |
| 8'-0"        | 8            | 11"           | 9 1/2"     |

**ELEVATION**  
(Looking South)



**SECTION THRU ABUTMENT**

**BILL OF MATERIAL SOUTH ABUTMENT**

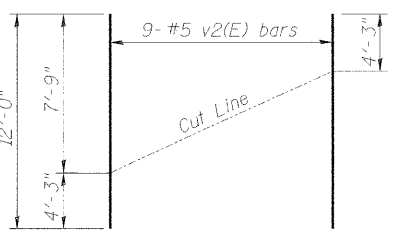
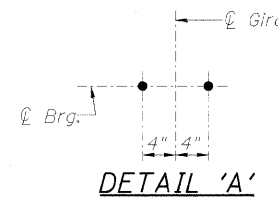
| Bar                              | No.     | Size | Length | Shape |
|----------------------------------|---------|------|--------|-------|
| h(E)                             | 32      | #7   | 11'-3" | —     |
| h8(E)                            | 4       | #7   | 12'-1" | —     |
| p(E)                             | 12      | #8   | 30'-3" | —     |
| p(E)                             | 12      | #8   | 34'-3" | —     |
| p2(E)                            | 4       | #4   | 10'-0" | —     |
| p7(E)                            | 4       | #4   | 6'-0"  | —     |
| s2(E)                            | 120     | #6   | 12'-0" | □     |
| u(E)                             | 8       | #6   | 11'-1" | □     |
| u(E)                             | 17      | #4   | 6'-6"  | □     |
| v(E)                             | 124     | #5   | 4'-4"  | —     |
| v2(E)                            | 68      | #5   | 12'-0" | —     |
| Concrete Structures              | Cu. Yd. | 26.3 |        |       |
| Reinforcement Bars, Epoxy Coated | Pound   | 6730 |        |       |
| Structure Excavation             | Cu. Yd. | 162  |        |       |
| Furnishing Steel Piles HP12x53   | Ft.     | 441  |        |       |
| Driving Piles                    | Ft.     | 441  |        |       |
| Test Piles Steel HP12x53         | Each    | 1    |        |       |
| Concrete Encasement              | Cu. Yd. | 3.5  |        |       |

**MIN. BAR LAPS**

- #4 bar - 1'-8"
- #5 bar - 2'-2"
- #6 bar - 2'-7"
- #8 bar - 4'-6"

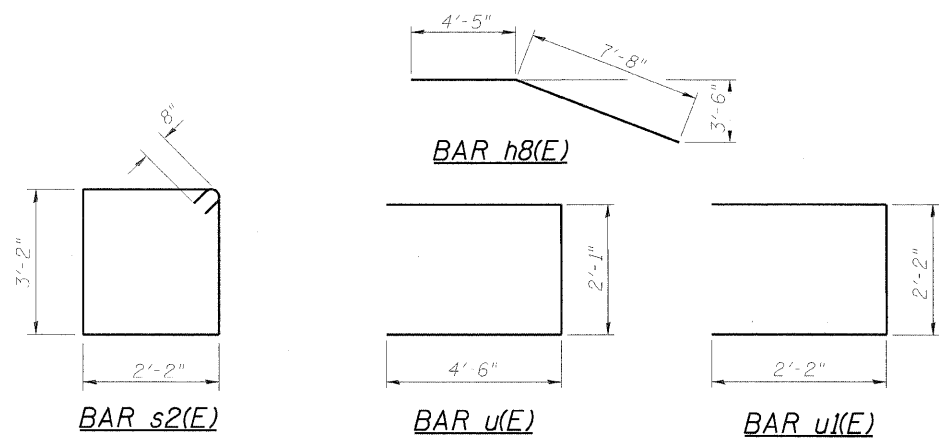
**PILE DATA**

Type: Steel HP12x53  
Nominal Required Bearing: 419 kips  
Allowable Resistance Available: 140 kips  
Est. Length: 49 ft.  
No. of Production Piles: 9  
No. of Test Piles: 1



**FIELD CUTTING DIAGRAM**

Order v2(E) full length. Cut as shown and use remainder of bars in opposite face.



Note:  
For details of piles and encasement, see Sheet 19 of 22.

**SOUTH ABUTMENT**  
UTICA ROAD (IL. RTE. 178) over F.A.I. ROUTE 80  
SECTION 50-3HBK  
LaSALLE COUNTY  
STATION 115+00.00  
STRUCTURE NO. 050-0248

© Copyright Hanson Professional Services Inc. 2009

JOB NO. 05S2015  
DATE 10/12/09

12/23/2009 C:\PW\_E\proj\AS-10\F-P-001.dgn

|         |     |          |
|---------|-----|----------|
| LAYOUT  | MMW | 11/16/05 |
| DRAWN   | ROZ | 1/15/07  |
| REVISED | JLT | 1/15/07  |