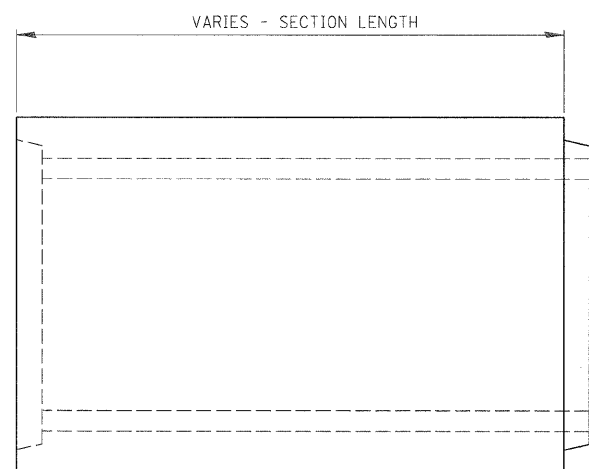
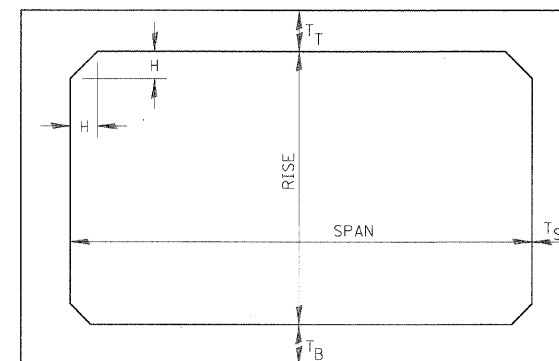


F.A.I. RTE.	SECTION	COUNTY	TOTAL SHEETS	SHEET NO.
80	450-31HBK	LASALLE	492	311
STA.		TO STA.		
FED. ROAD DIST. NO.	ILLINOIS	FED. AID PROJECT		



ELEVATION



NOTE: THE HAUNCH DIMENSION H, IS EQUAL TO THE WALL THICKNESS T_S.

TYPICAL BOX SECTION

SPAN, FEET	T _T , INCHES		T _B , INCHES		T _S , INCHES	
	M 259	M 273	M 259	M 273	M 259	M 273
3	4	7	4	6	4	4
4	5	7 1/2	5	6	5	5
5	6	8	6	7	6	6
6	7	8	7	7	7	7
7	8	8	8	8	8	8
8	8	8	8	8	8	8
9	9	9	9	9	9	9
10	10	10	10	10	10	10
11	11	11	11	11	11	11
12	12	12	12	12	12	12

TYPICAL THICKNESSES

GENERAL NOTES:

MINIMUM COVER FOR BOX
CULVERTS SHALL BE 6".

MODEL NAME = SHEET 04
 PLOT DATE = 12/23/2009
 USER = John
 PLOT SCALE = 1/8"=1'-0"
 USER NAME = John

LAYOUT	KET	B/24/06
DRAWN	IDOT	1/01/97
REVIEWED	MTM	10/1/07

REVISIONS	
NAME	DATE

ILLINOIS DEPARTMENT OF TRANSPORTATION

**PRECAST CONCRETE
BOX SECTION DETAIL**

SCALE: VERT. N/A
 DATE: HORIZ. N/A

DRAWN BY IDOT
 CHECKED BY MTM