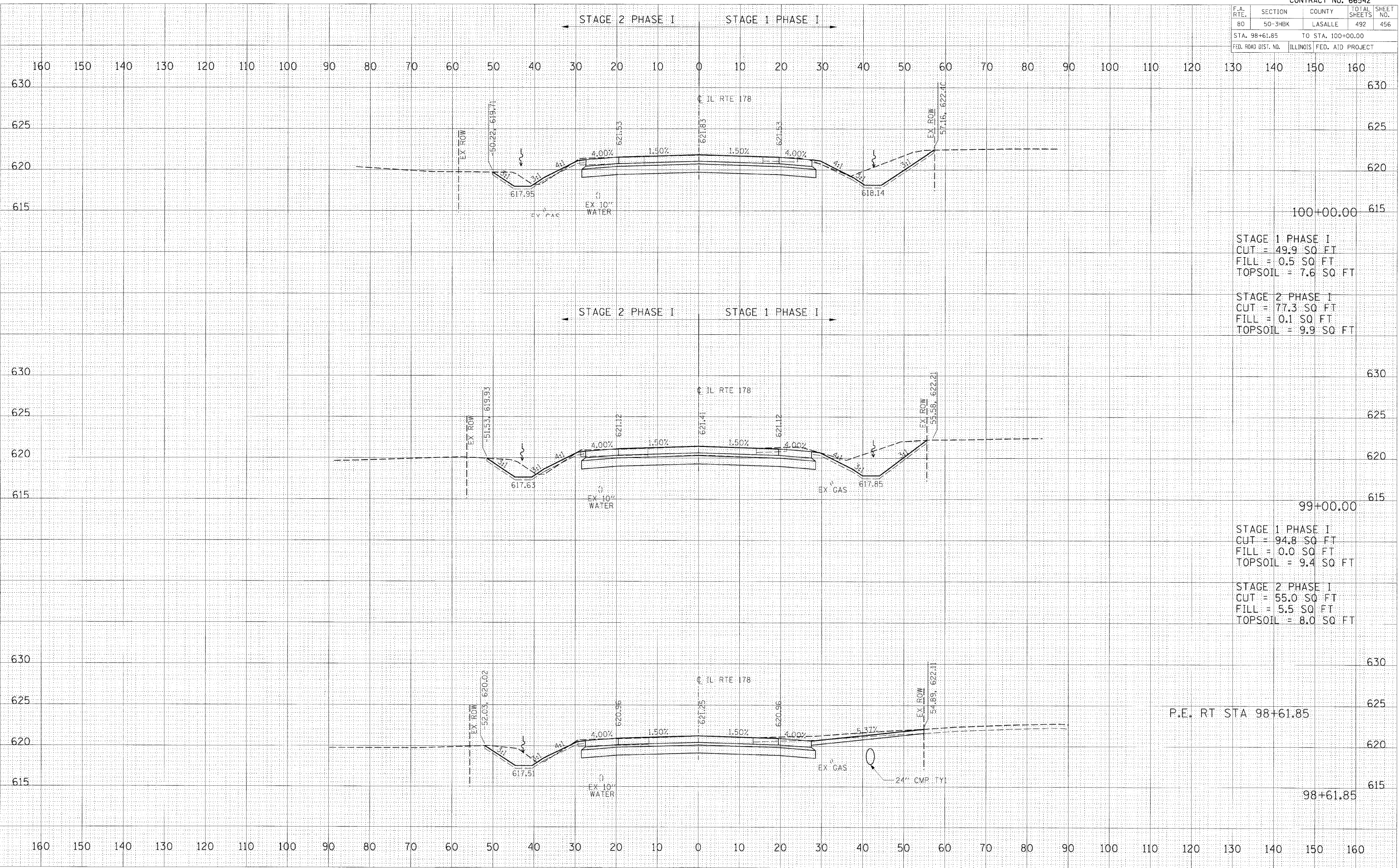


| F.A. RTE. | SECTION | COUNTY | TOTAL SHEETS | SHEET NO. |
|---------------------------------|---------|---------|--------------|------------------|
| 80 | 50-3H&K | LASALLE | 492 | 456 |
| STA. 98+61.85 TO STA. 100+00.00 | | | | |
| FED. ROAD DIST. NO. | | | ILLINOIS | FED. AID PROJECT |



100+00.00
 STAGE 1 PHASE I
 CUT = 49.9 SQ FT
 FILL = 0.5 SQ FT
 TOPSOIL = 7.6 SQ FT

STAGE 2 PHASE I
 CUT = 77.3 SQ FT
 FILL = 0.1 SQ FT
 TOPSOIL = 9.9 SQ FT

99+00.00
 STAGE 1 PHASE I
 CUT = 94.8 SQ FT
 FILL = 0.0 SQ FT
 TOPSOIL = 9.4 SQ FT

STAGE 2 PHASE I
 CUT = 55.0 SQ FT
 FILL = 5.5 SQ FT
 TOPSOIL = 8.0 SQ FT

P.E. RT STA 98+61.85

98+61.85

DATE
 BY
 SURVEYED
 CHECKED
 TEMPLATED
 AREAS CHECKED

HANSON
 HANSON PROFESSIONAL SERVICES INC.
 1525 SOUTH SIXTH STREET
 SPRINGFIELD, ILLINOIS 62703-2886
 OFFICES NATIONWIDE

DATE
 BY
 SURVEYED
 CHECKED
 TEMPLATED
 AREAS CHECKED

PLOT DATE = 12/23/2009
 FILE NAME = I:\98105\98105\CADD\Road\Sheet\98105\98105.dwg
 PLOT SCALE = 1/8" = 1'-0"
 USER NAME = jjohns@hpi44