

F.A.P. RTE.	SECTION	COUNTY	TOTAL SHEETS	SHEET NO.
68	(3)BR-1	LASALLE	44	10
STA. N/A	TO STA. N/A			
FED. ROAD DIST. NO.	ILLINOIS	FED. AID PROJECT		

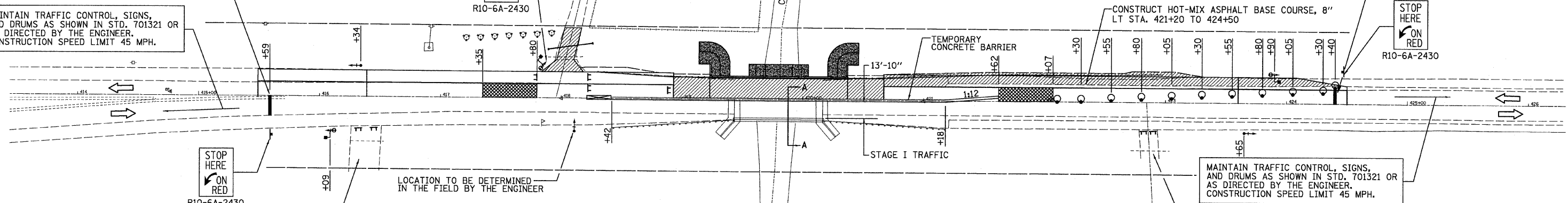
**CONTRACT NO. 66619**

STOP LINE - WHITE REFLECTORIZED PAVEMENT MARKING TAPE, 24" (TYP.)

MAINTAIN TRAFFIC CONTROL, SIGNS, AND DRUMS AS SHOWN IN STD. 701321 OR AS DIRECTED BY THE ENGINEER. CONSTRUCTION SPEED LIMIT 45 MPH.

STOP LINE - WHITE REFLECTORIZED PAVEMENT MARKING TAPE, 24" (TYP.)

STOP HERE ON RED R10-6A-2430

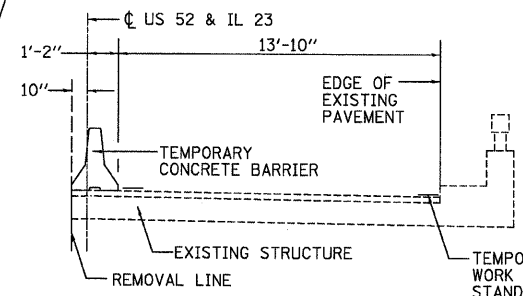


STOP HERE ON RED R10-6A-2430

CLOSE FIELD ENTRANCE DURING CONSTRUCTION

MAINTAIN TRAFFIC CONTROL, SIGNS, AND DRUMS AS SHOWN IN STD. 701321 OR AS DIRECTED BY THE ENGINEER. CONSTRUCTION SPEED LIMIT 45 MPH.

CLOSE FIELD ENTRANCE DURING CONSTRUCTION



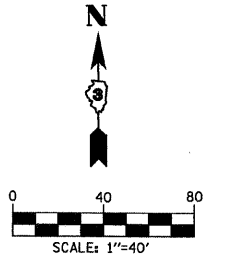
**STAGE I TRAFFIC**

SEQUENCE OF OPERATIONS									
PHASE	A			B			C		
INTERVAL	1	2	3	4	5	6	7	8	9
EAST BOUND	G	Y	R	R	R	R	R	R	R
WEST BOUND	R	R	R	G	Y	R	R	R	R
ENTRANCE	R	R	R	R	R	R	G	Y	R

- STAGE I**
1. INSTALL TRAFFIC SIGNALS, SIGNS, ETC. ACCORDING TO DETAILS & TRAFFIC CONTROL STANDARD 701321, MAINTAINING ALL TRAFFIC ON EASTBOUND LANE.
  2. REMOVE STAGE I PORTION OF THE EXISTING BRIDGE STRUCTURE; GUARDRAIL; & PAVEMENT AS SHOWN ELSEWHERE ON PLANS. MAINTAIN ACCESS TO PRIVATE ENTRANCE, STA. 417+95.70.
  3. CONSTRUCT THE STAGE I PORTION OF THE PROPOSED STRUCTURE, BRIDGE APPROACH PAVEMENT, HOT-MIX ASPHALT BASE COURSE, LEVELING BINDER, GUARDRAIL, CULVERT PIPE AND PRIVATE ENTRANCE LOCATED ON THE WESTBOUND LANE AS SHOWN ELSEWHERE IN PLANS.

- STAGE II**
1. RELOCATE THE ATTENUATORS AS SHOWN IN DETAILS AND STANDARD 701321. RE-DIRECT TRAFFIC TO WESTBOUND LANE.
  2. REMOVE THE STAGE II PORTION OF THE EXISTING STRUCTURE, PAVEMENT, AND GUARDRAIL AS SHOWN ELSEWHERE IN PLANS.
  3. CONSTRUCT THE STAGE II PORTION OF THE PROPOSED STRUCTURE, BRIDGE APPROACH PAVEMENT, LEVELING BINDER, GUARDRAIL & FIELD ENTRANCES.
  4. REMOVE TRAFFIC SIGNALS, ETC. CALLED FOR IN STANDARD 701321.

- STAGE III**
1. UNDER APPROPRIATE TRAFFIC CONTROL STANDARDS, RE-SURFACE, STRIPE ROADWAY AND COMPLETE ALL REMAINING WORK AS SHOWN ELSEWHERE IN PLANS.

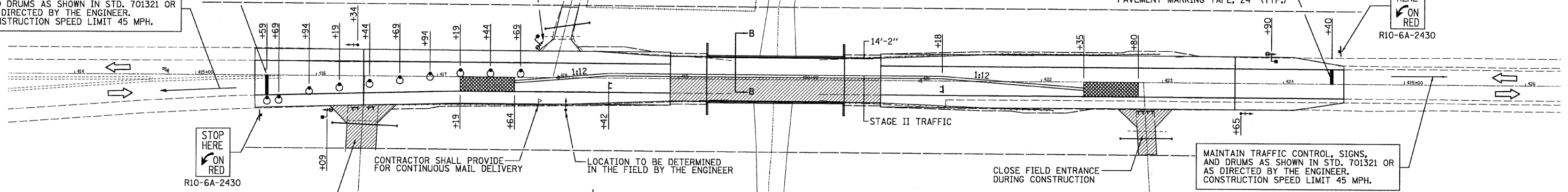


STOP LINE - WHITE REFLECTORIZED PAVEMENT MARKING TAPE, 24" (TYP.)

MAINTAIN TRAFFIC CONTROL, SIGNS, AND DRUMS AS SHOWN IN STD. 701321 OR AS DIRECTED BY THE ENGINEER. CONSTRUCTION SPEED LIMIT 45 MPH.

STOP LINE - WHITE REFLECTORIZED PAVEMENT MARKING TAPE, 24" (TYP.)

STOP HERE ON RED R10-6A-2430

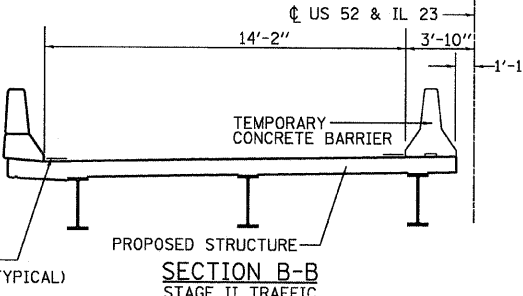


STOP HERE ON RED R10-6A-2430

CLOSE FIELD ENTRANCE DURING CONSTRUCTION

MAINTAIN TRAFFIC CONTROL, SIGNS, AND DRUMS AS SHOWN IN STD. 701321 OR AS DIRECTED BY THE ENGINEER. CONSTRUCTION SPEED LIMIT 45 MPH.

CLOSE FIELD ENTRANCE DURING CONSTRUCTION



**STAGE II TRAFFIC**

- LEGEND**
- IMPACT ATTENUATORS, TEMPORARY (NON-REDIRECTIVE), TEST LEVEL 3
  - DRUM WITH STEADY BURNING LIGHT
  - TRAFFIC SIGNAL W/ MICROWAVE DETECTOR W/ BACKPLATE
  - WORK ZONE
  - IMPACT ATTENUATORS, TEMPORARY (FULLY REDIRECTIVE, NARROW), TEST LEVEL 3
  - SIGNAL HEAD W/ BACKPLATE
  - TYPE III BARRICADES

**NOTES:**

TRAFFIC CONTROL FOR STAGE CONSTRUCTION SHALL BE IN ACCORDANCE WITH THE DETAILS SHOWN. STANDARD 701321 AND THE SPECIAL PROVISIONS.

ALL DIMENSIONS ARE IN FEET AND TENTHS EXCEPT WHERE NOTED.

REVISIONS	
NAME	DATE

ILLINOIS DEPARTMENT OF TRANSPORTATION

**TRAFFIC CONTROL STAGING PLAN**

SCALE: 1" = 40'

DATE: JUNE 20, 2008

DRAWN BY DAC

CHECKED BY AAG