

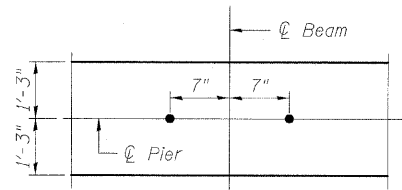
STATE OF ILLINOIS
DEPARTMENT OF TRANSPORTATION

ROUTE NO.	SECTION	COUNTY	TOTAL SHEETS	SHEET NO.	SHEET NO. 16 OF 23 SHEETS
U.S. F.A.	(3)BR-1	LASALLE	44	26	
FED. ROAD DIST. NO. 7	ILLINOIS	FED. AID PROJECT-	CONTRACT NO. 66619		

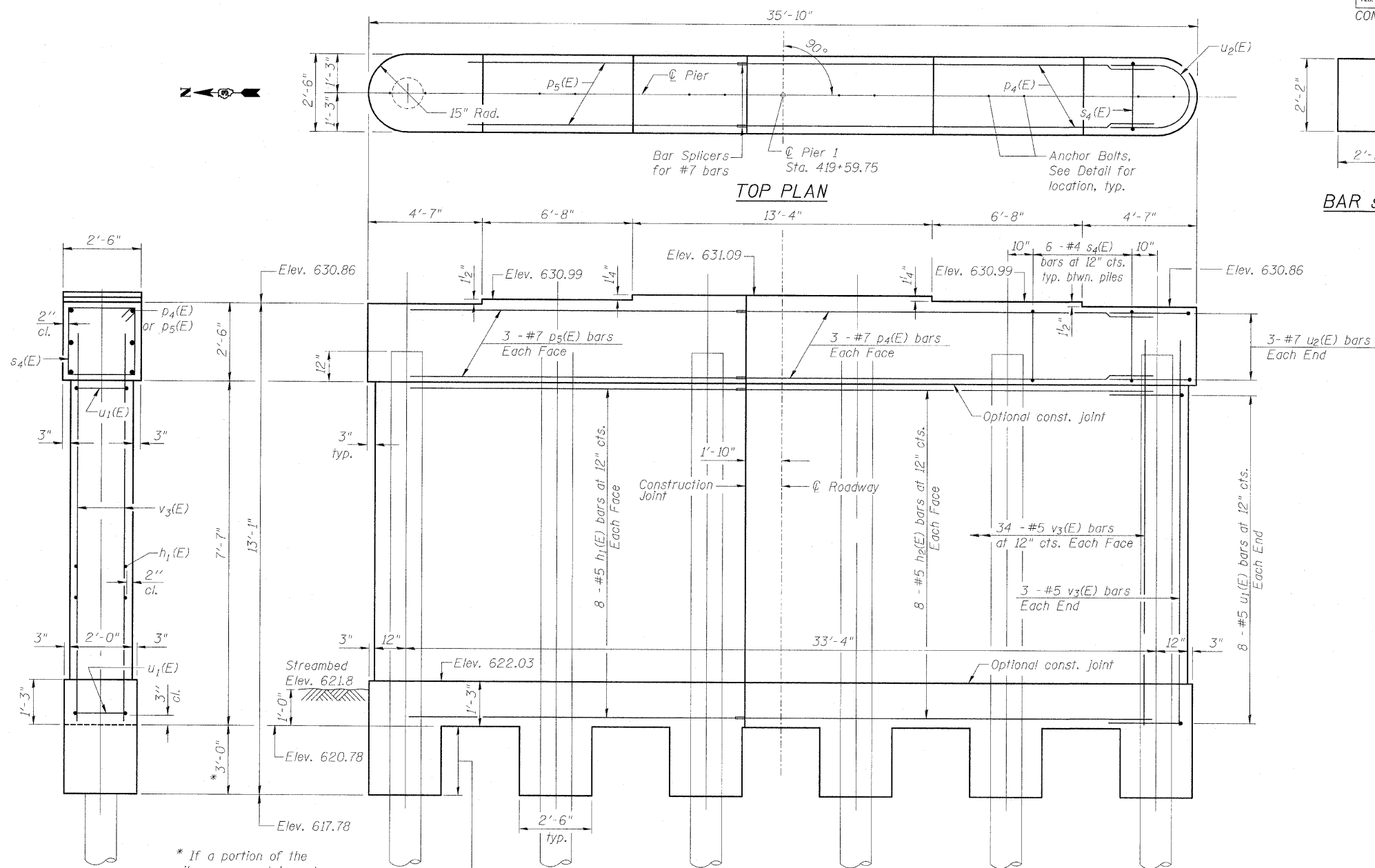
Notes:
Space reinforcement in cap to miss anchor bolts.
Pour steps monolithically with cap.
For details of piles, see sheet 18 of 23.

PILE DATA

Type: 12" Metal Shell w/ 0.25" walls
Nominal Required Bearing: 327 kips/pile
Allowable Resistance Available: 109 kips/pile
Est. Length: 63 feet
No. Production Piles: 6
No. Test Piles: 0



TYP. ANCHOR BOLT LOCATION

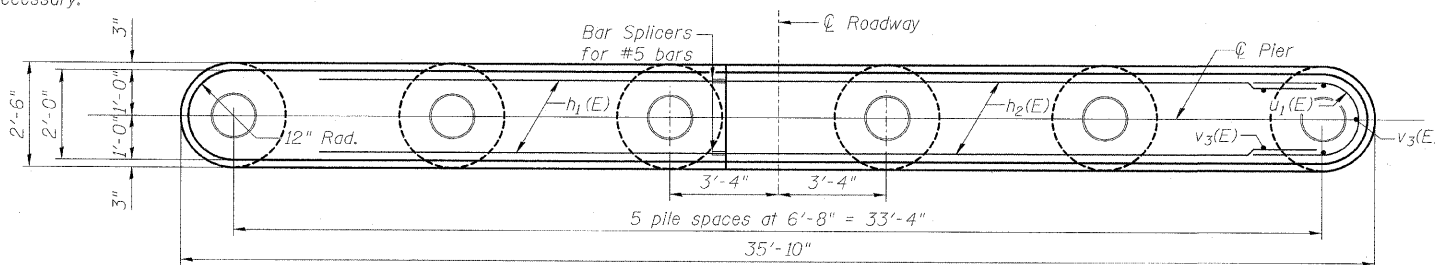


ELEVATION
(Looking East)

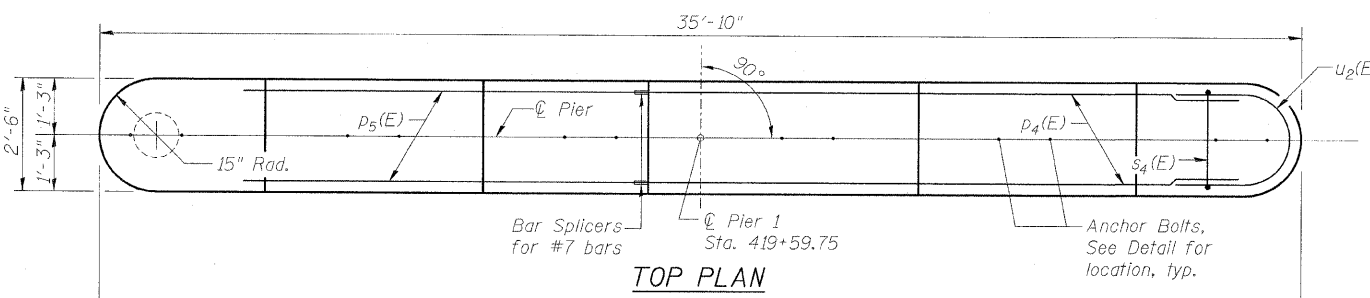
END VIEW

* If a portion of the pile encasement is under water, Concrete Encasement shall be tremmed under water into forms as necessary.

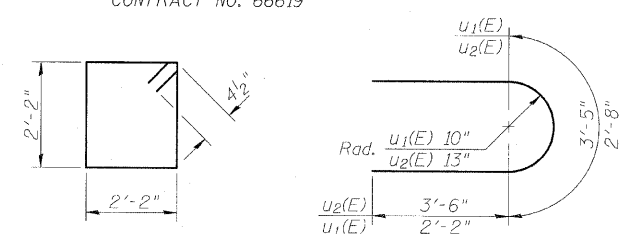
See Detail of Concrete Encasement at Piers, on Sheet 18 of 23



STEM PLAN

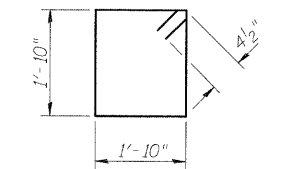


TOP PLAN



BAR s4(E)

BARS u1(E) & u2(E)



BAR s4(E)

BILL OF MATERIAL

Bar	No.	Size	Length	Shape
h1(E)	16	#5	14'-10"	—
h2(E)	16	#5	18'-6"	—
p4(E)	6	#7	18'-6"	—
p5(E)	6	#7	14'-10"	—
s4(E)	30	#4	9'-5"	□
s5(E)	42	#4	8'-1"	□
u1(E)	16	#5	7'-0"	U
u2(E)	6	#7	10'-5"	U
v3(E)	74	#5	9'-5"	—
v4(E)	48	#5	3'-9"	—
Concrete Structures		Cu. Yd.	29.1	
Reinforcement Bars, Epoxy Coated		Pound	2540	
Structure Excavation		Cu. Yd.	50	
Underwater Structure Excavation Protection, Location 1		Each	1	
Furnishing Metal Shell Piles 12" x 0.250"		Foot	378	
Driving Piles		Foot	378	
Concrete Encasement		Cu. Yd.	3.3	

PIER 1 DETAILS
US ROUTE 52 AND IL ROUTE 23 OVER
CROOKED LEG CREEK
F.A.P. ROUTE 68 SECTION (3) BR-1
LASALLE COUNTY
STATION 419+80.00
STRUCTURE NUMBER 050-0240