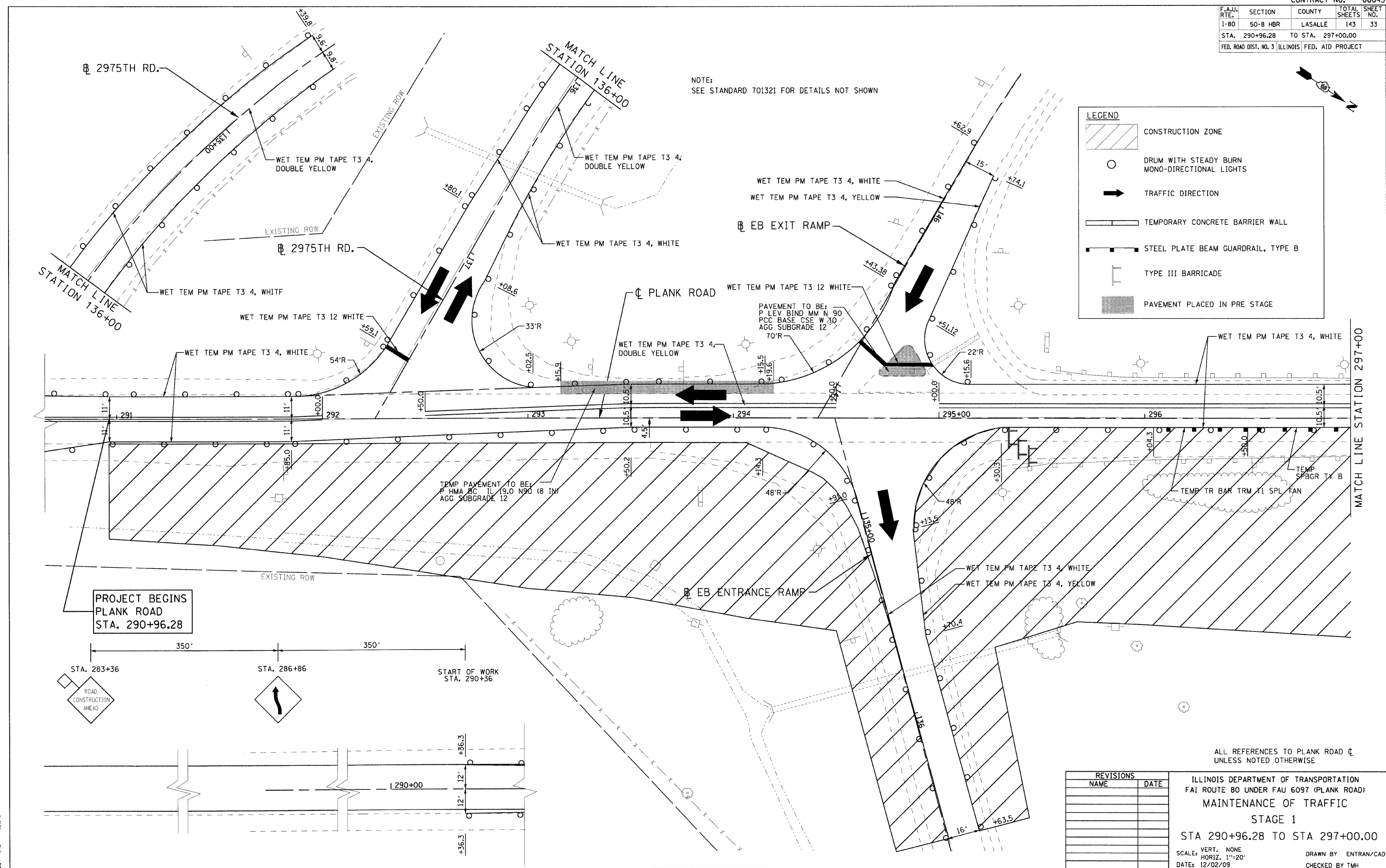


F.A.U. RTE.	SECTION	COUNTY	TOTAL SHEETS	SHEET NO.
I-80	50-8 HBR	LASALLE	143	33
STA. 290+96.28		TO STA. 297+00.00		
FED. ROAD DIST. NO. 3 ILLINOIS FED. AID PROJECT				

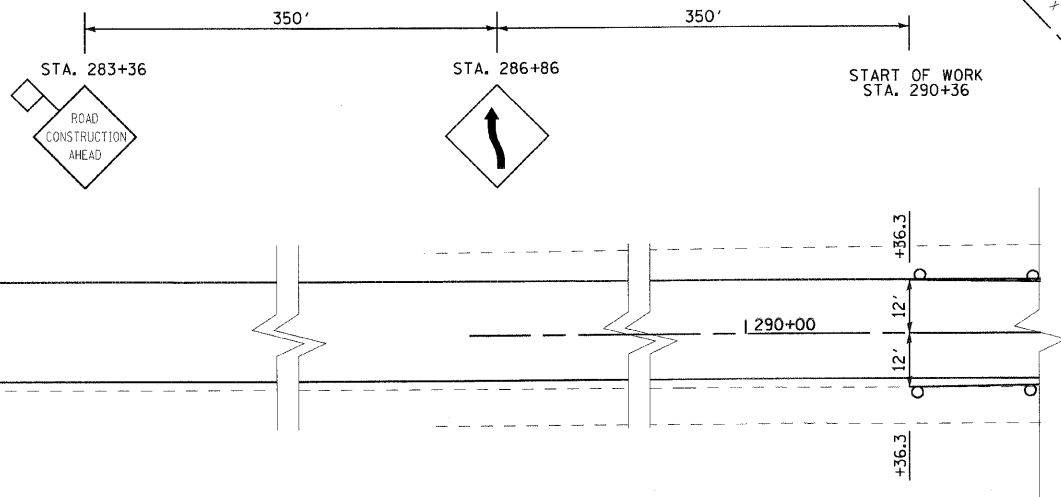
NOTE:
SEE STANDARD 701321 FOR DETAILS NOT SHOWN

LEGEND

- CONSTRUCTION ZONE
- DRUM WITH STEADY BURN MONO-DIRECTIONAL LIGHTS
- TRAFFIC DIRECTION
- TEMPORARY CONCRETE BARRIER WALL
- STEEL PLATE BEAM GUARDRAIL, TYPE B
- TYPE III BARRICADE
- PAVEMENT PLACED IN PRE STAGE



PROJECT BEGINS
PLANK ROAD
STA. 290+96.28



REVISIONS	
NAME	DATE

ALL REFERENCES TO PLANK ROAD C
UNLESS NOTED OTHERWISE

ILLINOIS DEPARTMENT OF TRANSPORTATION
FAI ROUTE 80 UNDER FAU 6097 (PLANK ROAD)
MAINTENANCE OF TRAFFIC
STAGE 1
STA 290+96.28 TO STA 297+00.00

SCALE: VERT. NONE
HORIZ. 1"=20'
DATE: 12/02/09

DRAWN BY ENTRAN/CAD
CHECKED BY TMH

PLOT DATE = 2/14/2010
FILE NAME = g:\projects\20040891\081\road\vlm\11.01.rds
PLOT SCALE = 20.000 / IN.
PLOT TIME = 4:01:41 PM

