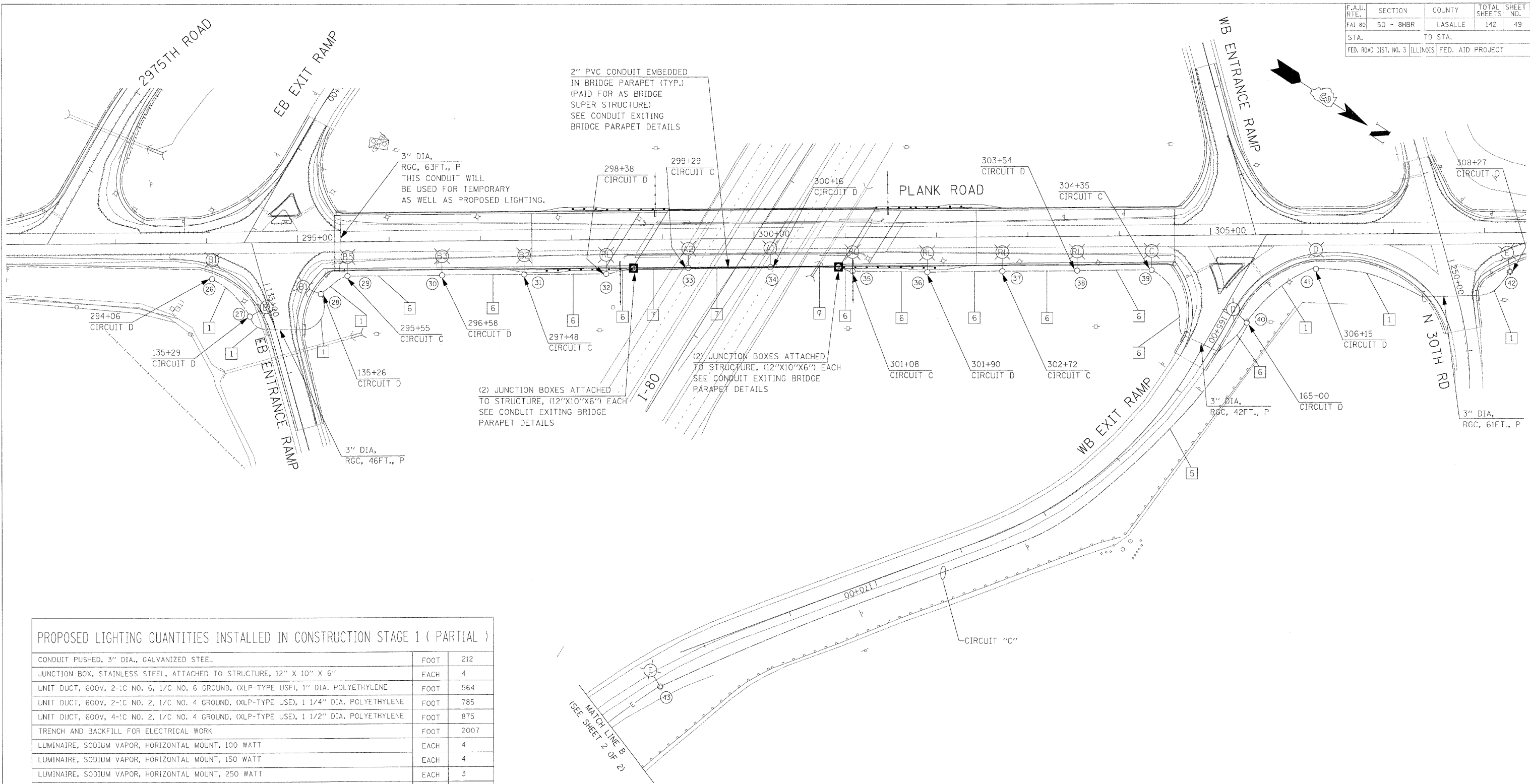


F.A.U. RTE.	SECTION	COUNTY	TOTAL SHEETS	SHEET NO.
FAI 80	50 - 8HBR	LASALLE	142	49
STA.	TO STA.			
FED. ROAD DIST. NO. 3 ILLINOIS FED. AID PROJECT				



**PROPOSED LIGHTING QUANTITIES INSTALLED IN CONSTRUCTION STAGE 1 ( PARTIAL )**

DESCRIPTION	UNIT	QUANTITY
CONDUIT PUSHED, 3" DIA., GALVANIZED STEEL	FOOT	212
JUNCTION BOX, STAINLESS STEEL, ATTACHED TO STRUCTURE, 12" X 10" X 6"	EACH	4
UNIT DUCT, 600V, 2-C NO. 6, 1/C NO. 6 GROUND, (XLP-TYPE USE), 1" DIA. POLYETHYLENE	FOOT	564
UNIT DUCT, 600V, 2-C NO. 2, 1/C NO. 4 GROUND, (XLP-TYPE USE), 1 1/4" DIA. POLYETHYLENE	FOOT	785
UNIT DUCT, 600V, 4-C NO. 2, 1/C NO. 4 GROUND, (XLP-TYPE USE), 1 1/2" DIA. POLYETHYLENE	FOOT	875
TRENCH AND BACKFILL FOR ELECTRICAL WORK	FOOT	2007
LUMINAIRE, SODIUM VAPOR, HORIZONTAL MOUNT, 100 WATT	EACH	4
LUMINAIRE, SODIUM VAPOR, HORIZONTAL MOUNT, 150 WATT	EACH	4
LUMINAIRE, SODIUM VAPOR, HORIZONTAL MOUNT, 250 WATT	EACH	3
LIGHT POLE, ALUMINUM, 16 FT. M.H., 6 FT. DAVIT ARM	EACH	1
LIGHT POLE, ALUMINUM, 17 FT. M.H., 10 FT. DAVIT ARM	EACH	2
LIGHT POLE, ALUMINUM, 18 FT. M.H., 10 FT. DAVIT ARM	EACH	1
LIGHT POLE, ALUMINUM, 20 FT. M.H., 6 FT. DAVIT ARM	EACH	1
LIGHT POLE, ALUMINUM, 20 FT. M.H., 10 FT. DAVIT ARM	EACH	3
LIGHT POLE, ALUMINUM, 35 FT. M.H., 10 FT. DAVIT ARM	EACH	1
LIGHT POLE, ALUMINUM, 40 FT. M.H., 10 FT. DAVIT ARM	EACH	2
LIGHT POLE FOUNDATION METAL, 15" BOLT CIRCLE, 8" X 6"	EACH	2
BREAKAWAY DEVICE, COUPLING, WITH STAINLESS STEEL SCREEN	EACH	56
RELOCATE EXISTING LIGHTING UNIT	EACH	5
LIGHT POLE FOUNDATION METAL, 11" BOLT CIRCLE, 8" X 6"	EACH	12

MATCH LINE B  
(SEE SHEET 2 OF 2)

REVISIONS	
NAME	DATE

ILLINOIS DEPARTMENT OF TRANSPORTATION  
 PLANK ROAD OVER I-80  
 1"=50' /EUB /MAE  
 PROPOSED LIGHTING WORK TO BE PERFORMED IN CONSTRUCTION STAGE 1  
 SCALE: DRAWN BY ROP  
 DATE: 12/2/2009 CHECKED BY PKG

PLOT DATE = 2/2/2010  
 FILE NAME = #FILE#  
 PLOT SCALE = #SCALE#  
 PLOT TIME = 11:23:35 AM