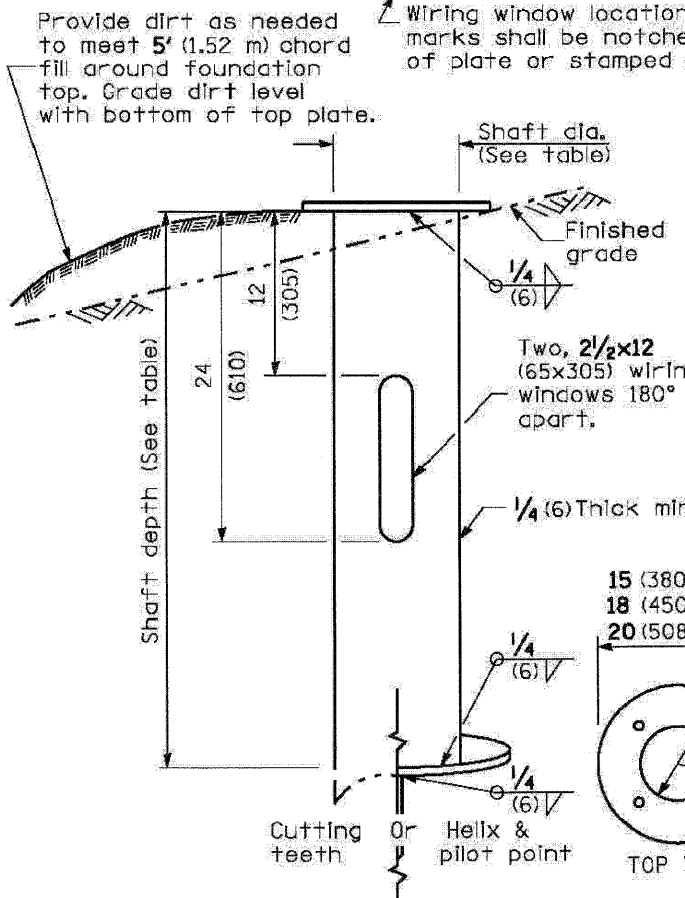
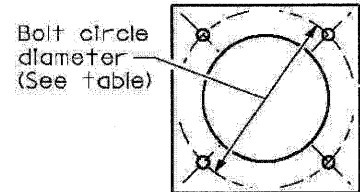


F.A.U. RTE.	SECTION	COUNTY	TOTAL SHEETS	SHEET NO.
FAI 80	50 - 8HBR	LASALLE	142	59
STA.	TO STA.			
FED. ROAD DIST. NO. 3 ILLINOIS FED. AID PROJECT				

LIGHT POLE MOUNTING HEIGHT	BOLT CIRCLE DIAMETER	METAL FOUNDATION			CONCRETE FOUNDATION		
		SHAFT DIAMETER	SHAFT DEPTH	TOP PLATE (min)	SHAFT DIAMETER	SHAFT DEPTH	ANCHOR ROD LENGTH ①
< 30' (9.1 m)	11 1/2 (292)	8 5/8 (220)	6' (1.83 m)	12 x 12 x 1 (300 x 300 x 25)	24 (610)	5'-0" (1.52 m)	4'-9" (1.45 m)
31'-35' (9.4 m - 10.7 m)	11 1/2 (292)	8 5/8 (220)	6' (1.83 m)	12 x 12 x 1 (300 x 300 x 25)	24 (610)	5'-6" (1.67 m)	5'-3" (1.60 m)
36'-40' (10.9 m - 12.2 m)	15 (381)③	8 5/8 (220)	6' (1.83 m) ②	15 x 15 x 1 1/4 (375 x 375 x 31)	30 (762)	6'-0" (1.83 m)	5'-9" (1.75 m)
41'-45' (12.5 m - 13.7 m)	15 (381)③	8 5/8 (220)	6' (1.83 m) ②	15 x 15 x 1 1/4 (375 x 375 x 31)	30 (762)	6'-6" (1.98 m)	6'-3" (1.90 m)
46'-50' (14.0 m - 15.2 m)	15 (381)③	8 5/8 (220)	8' (2.44 m)	15 x 15 x 1 1/4 (375 x 375 x 31)	30 (762)	7'-0" (2.13 m)	6'-9" (2.00 m)

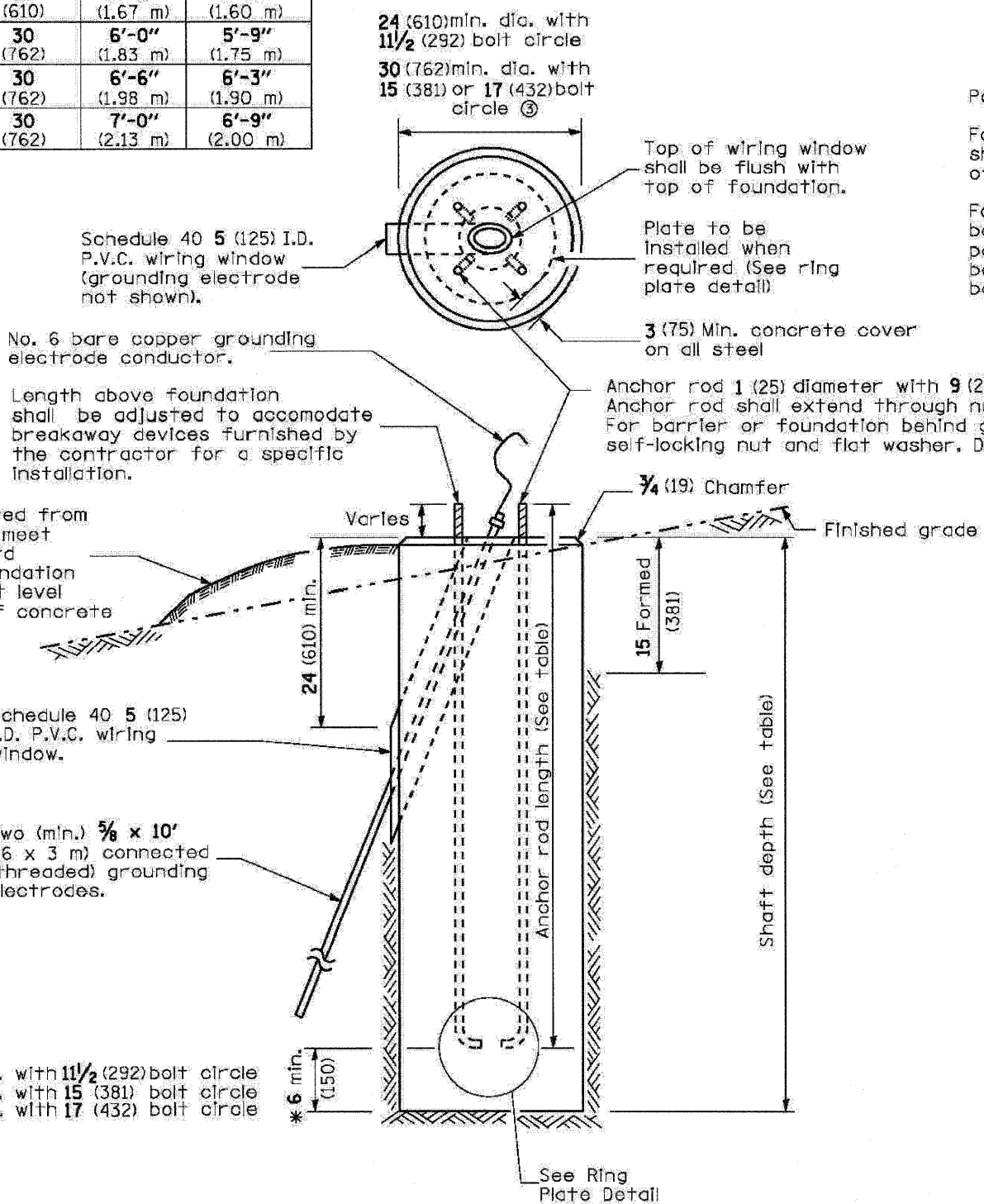
- ① Length does not include 4 (100) hook.
- ② 8 5/8 x 8'-0" (220 x 2.44 m) for twin luminaires.
- ③ Use the maximum allowable bolt circle diameter (typ. 17(430)) for a transformer base.



METAL FOUNDATION

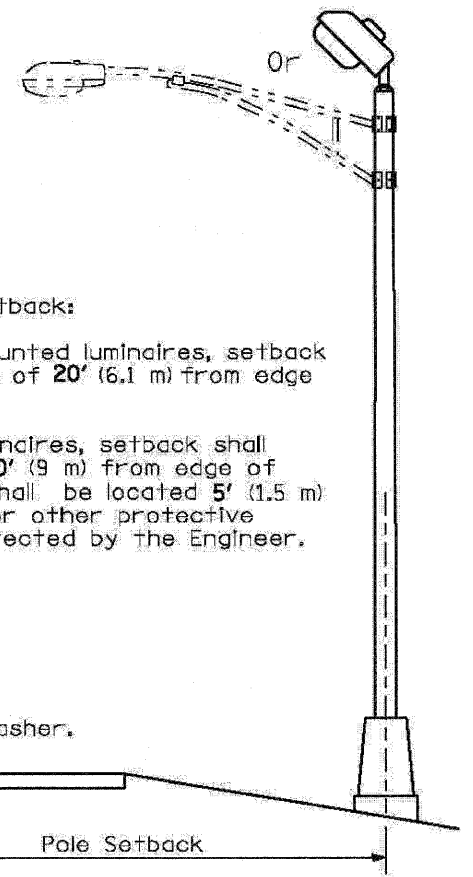
RING PLATE DETAIL

(When rock is encountered and foundation is shallower)



CONCRETE FOUNDATION

* If the required anchor rod length above top of foundation is less than 3 (75), anchor rods may be lowered below 6 (150).



GENERAL NOTES

All foundations are designed to be located on slopes not exceeding 2:1 where soils have an unconfined compressive strength of at least 1.0 TSF. The Contractor shall verify the soil strength during drilling for concrete foundations or by monitoring installation resistance of metal foundations and notify the Engineer if other conditions are encountered.

Anchor rod shall be increased in diameter as needed for 50' (15.2 m) mounting height or above. The Contractor shall match the breakaway device size or slotted hole size in the pole base plate to accommodate larger rod sizes.

Transformer bases shall not be used on metal foundations.

All dimensions are in inches (millimeters) unless otherwise shown.

DATE	REVISIONS
1-1-10	New standard.

LIGHT POLE FOUNDATION

STANDARD 836001

Illinois Department of Transportation

PASSED January 1, 2010

ISSUED 1-1-10

ENGINEER OF PRELIMINARY ENGINEERING

APPROVED January 1, 2010

ENGINEER OF DESIGN AND ENVIRONMENT

PLOT DATE: 2/2/2010
 FILE NAME: 836001.dwg
 PLOT SCALE: 1/8"=1'-0"
 PLOT TIME: 11:39:17 AM